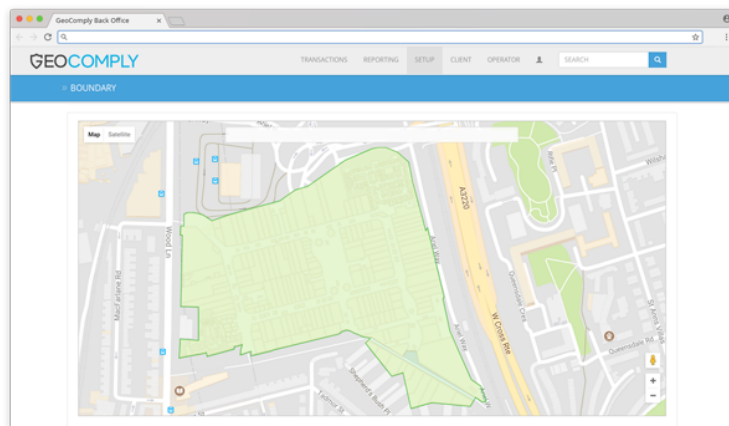


SECURE ON-PROPERTY MOBILE SOLUTION

BLUETOOTH TECHNOLOGY FOR ON-PROPERTY GEOLOCATION

Create customized virtual boundaries that allow guests to use their own mobile devices in a room, building or any defined physical space, in order to place bets or complete other types of transactions such as account creation or digital ID verification. Combining the power of Bluetooth Beacons with GeoComply's industry-leading geolocation technology, PinPoint is specifically designed to meet the gaming industry's unique requirements.



LOCATION COMPLIANCE FOR A VARIETY OF SCENARIOS

PinPoint meets all applicable location compliance requirements for unique on-property use cases, while bridging the gap between existing online and land-based gaming regulations. PinPoint is highly scalable and can be used in casinos, licensed premises like taverns and restaurants and in many other scenarios.

VIEW PRODUCT BROCHURE ([HTTPS://WWW.GEOCOMPLY.COM/APP/UPLOADS/2020/06/GEOCOMPLY-PINPOINT-USE-CASES.PDF](https://www.geocomply.com/app/uploads/2020/06/geocomply-pinpoint-use-cases.pdf))

PRODUCT FEATURES

- ✓ Custom Bluetooth Beacons are internet connected and scalable for large scale geofencing
- ✓ PinPoint Beacons integrate with the Beacon Manager software for continuous monitoring and reporting of compliance status
- ✓ Dashboard makes data transparent and accessible
- ✓ Automatic software updates ensure Beacons always have the latest security and compliance features
- ✓ Bundles into your client application for easy implementation
- ✓ The same location-spoofing and fraud prevention features found in our other solutions
- ✓ Independently tested by GLI, BMI and regulatory agencies

Check out the video below on how Pearl River Resort extended their Sportsbook through the property using PinPoint

On-premise mobile sports betting at Pearl River Resort - Powered by GeoComply and IGT



DIVERSE USE CASES

- **Enables operators to turn an entire gaming property into a sportsbook without incurring large capital expenses**
- **Allows guests to place bets on their own devices without waiting in lines at kiosks or terminals**
- **Streamlines the account creation or ID verification process by enabling guests to use their own devices on-property**
- **Provides operators with an additional level of geolocation accuracy in unique environments or to meet specific compliance requirements**

A B E T T E R U S E R E X P E R I E N C E

- **Enable real-time in-play betting via an app on a user's mobile device while on-premise**
 - **Capture player location and betting data to deliver tailored experiences**
 - **Attract a new demographic who are already accustomed to use their own devices for entertainment purposes**
 - **Enable guests to place wagers in their rooms, restaurants, bars, pool areas or fitness centers**
-

On-property compliance solution for customized use cases in casinos, licensed premises or any defined physical space.

Contact us today to see how PinPoint can address your unique requirements for geolocation compliance!

CONTACT US ([HTTPS://WWW.GEOCOMPLY.COM/CONTACT/](https://www.geocomply.com/contact/))



(<https://www.linkedin.com>

[/company/geocomply](https://twitter.com/geocomply)) ([https://twitter.com](https://twitter.com/geocomply)

[/geocomply](https://twitter.com/geocomply))

COPYRIGHT © 2021 GEOCOMPLY

PRIVACY POLICY ([HTTPS://WWW.GEOCOMPLY.COM/PRIVACY-POLICY/](https://www.geocomply.com/privacy-policy/))

TERMS OF USE ([HTTPS://WWW.GEOCOMPLY.COM/TERMS-OF-USE/](https://www.geocomply.com/terms-of-use/))

