

The image shows a multi-level, curved interior space. In the foreground, there is a large, circular, blue upholstered seating area with a central circular table holding a small potted plant. To the right, a white staircase with a curved railing leads upwards. The walls and ceiling are finished with light-colored wood paneling. A large, modern chandelier with many vertical light tubes hangs from the ceiling. In the background, a curved walkway with glass railings is visible, showing some art pieces on display. The overall atmosphere is clean, modern, and architectural.

tivoli

Flexile**LG**
VERTICAL



Project: _____ Type: _____

Product Features

- Lighted surface illuminates 360° uniformly without any shadowing
- Multiple lengths with multiple vertical mounting options for various applications
- High luminous efficiency with LM80 report
- UV Stabilized with food-grade environmental silicone housing (no yellowing or cracking)
- Resistance to saline solutions, acids, alkali, and corrosive gases
- Low Voltage 24V DC

Order Specification Guide

PRODUCT CODE	PROFILE	TYPE	LED COLOR	LENGTH	VOLTAGE
FLXPNDTV FLXPNDTV = Flexile Vertical Pendant	LG LG = Large	TO = Suspended Mount Top Outlet SO = Suspended Mount Side Outlet SF = Surface Mount	23 = 2300K 27 = 2700K 30 = 3000K 40 = 4000K	024 = 2' 048 = 4' 096 = 8'	24 24 = 24V DC

Specifications



LED Intensity	2300K	2700K	3000K	4000K
Lumens (lm/ft)	300	325	333	345
Beam Angle	360°			
Efficacy (lm/W)	66.6	72.4	74	76.6
CRI	95	95	95	95
Electrical				
Dimming	TRIAC, ELV, MLV, 0-10V, DMX			
Input Voltage	24V DC			
Power Consumption (W/ft)	4.5			
Maximum Run	20'			
Physical				
Dimensions (DIA) PC Tube	1.15"			
Dimensions (DIA) Flexile	0.98"			
Material (Flexile)	Silicone			
Material (Tube)	PC			
Storage Temperature	-0°C / -32°F ~ 60°C / 140°F			
Working Temperature	-20°C / -68°F ~ 55°C / 131°F			
Certification and Testing				
Certification	UL, CE, RoHS, IK08			
Environment	Dry Location			
Rated Hours (TM80)	70000 hrs.			
Warranty	3 Years			

Mounting Options

— Cable & Power Feed Direction
 — Power Feed Direction

SF
 Surface
 Side and top power outlet
 natural aluminum finish



TO
 Suspended
 Top cable outlet
 natural aluminum finish



SO
 Suspended
 Side cable outlet
 natural aluminum finish



Rigid Tube
 2', 4', and 8'
 available lengths



Flexile Light Engine
 2', 4', and 8'
 available lengths



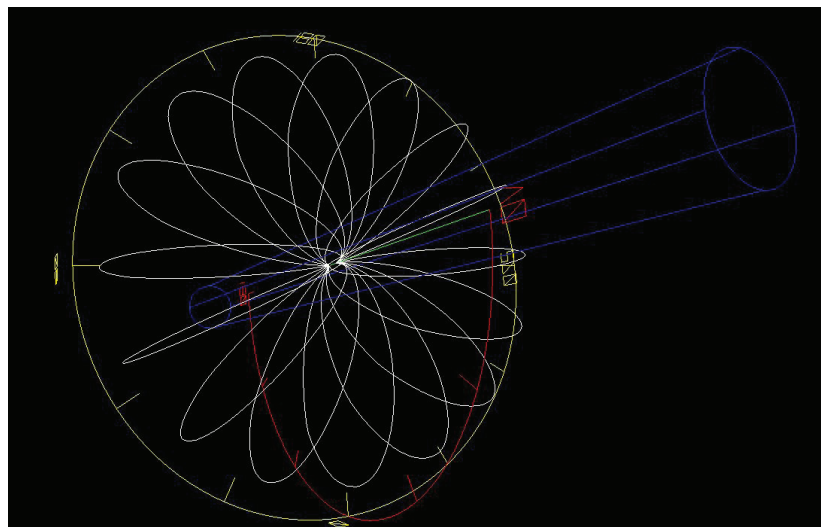
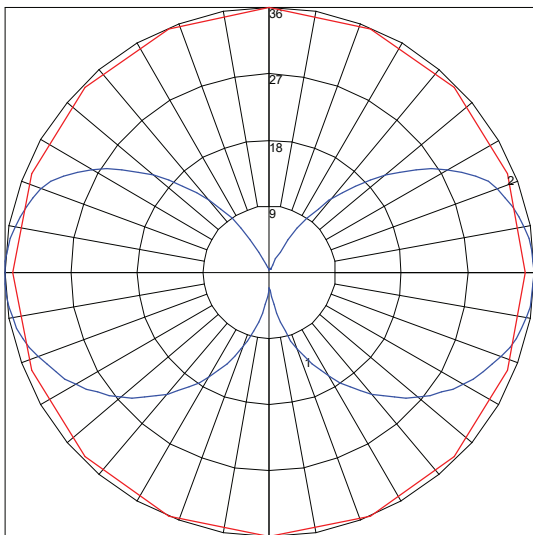
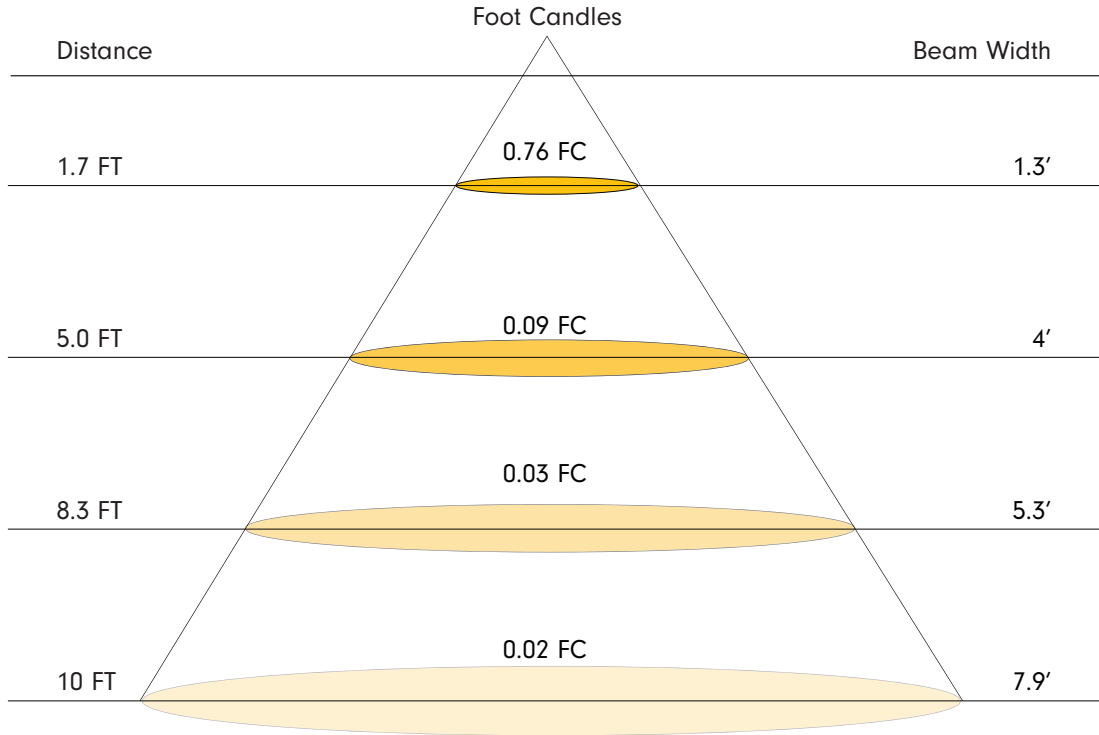
*Consult factory for lead time and MOQ

End Cap
 Natural aluminum finish end cap to match the SF,
 TO or SO mounting hardware above



Photometrics

Note: Data is based on 3000K



Maximum Candela = 35.8 Located At Horizontal Angle = 90, Vertical Angle = 87.5
 # 1 - Vertical Plane Through Horizontal Angles (90 - 270) (Through Max. Cd.)
 # 2 - Horizontal Cone Through Vertical Angle (87.5) (Through Max. Cd.)

Replacement Parts



FLXPNDTV-LG-SF
Vertical Pendant surface-mount bracket with both, side, and top power feed and natural aluminum finish



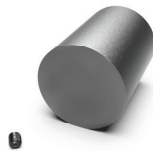
FLXPNDTV-LG-TO
Vertical Pendant suspended-mount bracket with TOP cable outlet and natural aluminum finish



FLXPNDTV-LG-SO
Vertical Pendant suspended-mount bracket with SIDE cable outlet and natural aluminum finish



FLXPNDTV-LG-PCTB
Clear polycarbonate tube, length 8' sold each



FLX-LG-EC
Flexile Large end cap with natural aluminum finish sold each

Power Supplies - Indoor & Outdoor Cont.

INFINITY - MLV / ELV / 0-10V / PWM / TRIAC DIMMING

DESCRIPTION	CAT NO	APPLICATION	PRIMARY VOLTAGE	SECONDARY VOLTAGE	CIRCUIT BREAKERS	MIN LOAD	MAX LOAD	CIRCUIT CAPACITY
Infinity Series Class 2 Transformer	INF-J-30-1-1.3-24	Indoor / Outdoor	100 - 277V AC	24V DC	1	3W	30W	1.3A
	INF-J-60-1-2.5-24				1	6W	60W	2.5A
	INF-J-96-1-4-24				1	9W	96W	4A
	INF-J-192-2-4-24				2	2x9W	2x96W	2x4A
	INF-J-288-3-4-24				3	3x9W	3x96W	3x4A

Power Supplies - Indoor Only

ADUL - NON DIMMING

DESCRIPTION	CAT NO	APPLICATION	PRIMARY VOLTAGE	SECONDARY VOLTAGE	CIRCUIT BREAKERS	MAX LOAD	CIRCUIT CAPACITY
ADUL Series Class 2 Transformer	ADUL-120-1-4-24-D	Indoor / Damp	100-277V AC 5% ₆₀ HZ	24V DC	1	96W	4A
	ADUL-240-2-4-24-D				2	2x96W	2x4A
	ADUL-320-3-4-24-D				3	3x96W	3x4A

ADUL - 0-10V DIMMING

DESCRIPTION	CAT NO	APPLICATION	PRIMARY VOLTAGE	SECONDARY VOLTAGE	CIRCUIT BREAKERS	MAX LOAD	CIRCUIT CAPACITY
ADUL Series Class 2 Transformer	ADUL-120-1-4-24-DOT	Indoor / Damp	100-277V AC 5% ₆₀ HZ	24V DC	1	96W	4A
	ADUL-240-2-4-24-DOT				2	2x96W	2x4A
	ADUL-320-3-4-24-DOT				3	3x96W	3x4A

ADUL - DMX SUB CONTROLLER (Single Address)

DESCRIPTION	CAT NO	APPLICATION	PRIMARY VOLTAGE	SECONDARY VOLTAGE	CIRCUIT BREAKERS	MAX LOAD	CIRCUIT CAPACITY
ADUL Series Class 2 Transformer	ADUL-120-1-4-24-DIN	Indoor / Damp	100-277V AC 5% ₆₀ Hz	24V DC	1	96W	4A
	ADUL-240-2-4-24-DIN				2	2x96W	2x4A
	ADUL-320-3-4-24-DIN				3	3x96W	3x4A

ADUL - DMX SUB CONTROLLER (Multi Address)

DESCRIPTION	CAT NO	APPLICATION	PRIMARY VOLTAGE	SECONDARY VOLTAGE	CIRCUIT BREAKERS	MAX LOAD	CIRCUIT CAPACITY
ADUL Series Class 2 Transformer	ADUL-240-2-4-24-DIN-2	Indoor / Damp	100-277V AC 5% ₆₀ Hz	24V DC	2	2x96W	2x4A
	ADUL-320-3-4-24-DIN-3				3	3x96W	3x4A