



ROGUE ARCHITECTURE DBE, MBE, SBE

CHALLENGING THE STATUS QUO

HOME ON THE BOARDS PORTFOLIO INSPIRATION ABOUT SERVICES COLLABORATIONS CONTACT



The Medical & Dental Center of Castle Pines

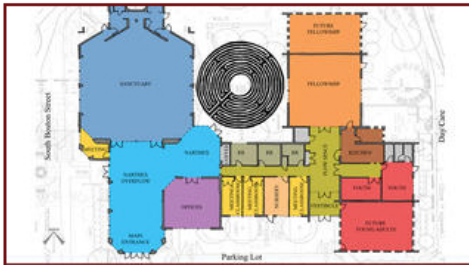
720.284.8787

Hello@RogueArchitecture.com

1660 Lincoln Street, Suite 100

Denver, CO 80264

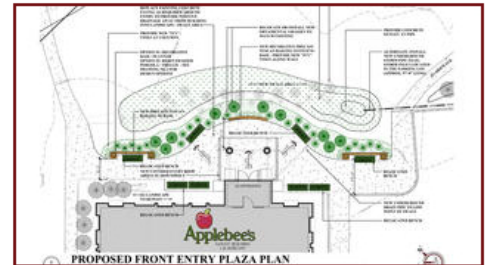
Website and contents © 2013 – 2020 Rogue Architecture, Inc. All Rights Reserved.
Website designed and maintained by Spotlight Website Design.



St. Peter Lutheran Church – Master Plan



Russ T. Diamonds, Inc. - Building Expansion
Denver, Colorado



Applebee's - West Des Moines, Iowa



Evolution Salon



Eagle Nest Aviation – Hangar P



Capital Logistics – Field Office

720.284.8787

Hello@RogueArchitecture.com

1660 Lincoln Street, Suite 100

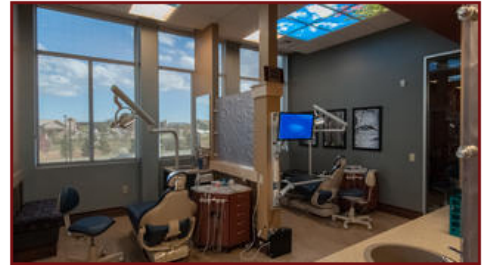
Denver, CO 80264



Medical and Dental Center of Castle Pines



Castle Pines Eye Care



Castle Pines Orthodontics



Castle Pines - Conference Area



Subway Restaurants



PIE Consulting & Engineering



U.S. General Services Administration (GSA)



V.A. Medical Center - Combined Heat & Power



V.A. Medical Center - Water Reduction



Public Service Credit Union



Colorado Banker's Life - Tenant Remodel

720.284.8787

Hello@RogueArchitecture.com

1660 Lincoln Street, Suite 100

Denver, CO 80264



Photography



Sketches

720.284.8787

Hello@RogueArchitecture.com

1660 Lincoln Street, Suite 100

Denver, CO 80264

**ROGUE** – *verb (used with object)*

to uproot or destroy that which does not conform to a desired standard

AR·CHI·TEC·TURE – *noun*

the profession of designing buildings, open areas, communities, and other artificial constructions and environments, usually with some regard to aesthetic effect.

...suitable for habitation

About Rogue Architecture

Rogue Architecture was founded with a philosophy to provide a higher level of architectural services that illustrate our patrons' visions and expectations. By establishing open lines of communication, we are able to collaborate with our clients and work towards a design that embodies the spirit of its process.

Using the **Vitruvian Virtues** as our Philosophical Foundation, we can then build on these fundamental principles and adapt newer axioms such as sustainability, building information modeling and anti-terrorism force protection to name a few:

Vitruvian Virtues (15 B.C.)

- Firmitas – True, Strength, Durability
- Utilitas – Usefulness
- Venustas – Beauty

Rogue Architecture is a 100% Minority Owned Business Enterprise. We provide Architectural Services with over 40 years combined experience in the fields of architecture and engineering. Based in Wheat Ridge, Colorado, Rogue Architecture's Principals specialize in Religious & Worship Facilities, including Building Assessment & Master Planning, Campus Developments, Historical Preservation and Capital Campaign Assistance.

Our uniqueness lies in our **Quality Assurance / Quality Control (QA/QC)**. Documents are reviewed from an architect's and a contractor's view point; considering constructibility and efficient design, thus keeping change orders to a minimum. **Rogue's "Hands-on"** project management and construction administration philosophy maintains projects on budget and schedule. Our Record Documentation is above and beyond the industry standard providing the client the most complete project documents.

Cultural Immersion

LISBON, PORTUGAL

- Janelas Verdes, 18th Century section of Lisbon, where historic is well adapted into the fabric and necessities of today's pace. Preservation of Historic Resources.

About Juan Gabriel Luna, AIA, NCARB

Founding Principal

Born in Argentina and cradled in Spanish Revival Colonial Architecture, a passion for the arts soon evolved. Emigrated to the United States and studied in New Jersey.

Heavily enamored with Black and White Photography, Juan established his architectural roots by studying and working on numerous projects in New York City.

Juan travelled abroad to immerse himself in classical as well as contemporary architecture. The following are the cities travelled and their most influential architectural monuments.

About Scott A. Boduch, AIA

Principal

With over 25 years of experience in the architectural profession, Scott has worked on a variety of projects types throughout the years with most of his focus towards religious & worship facilities, retail & restaurant, government, educational and office projects. His hands on approach has developed a strong working relationship with each one of his clients.

Through an established level of quality control and detail awareness, his projects remain in budget throughout the entire design and construction process with change order costs well below industry standards.

VENICE, ITALY

- Piazza San Marco – "The Drawing Room of Europe" – Aquatic and pedestrian circulation patterns
- San Giorgio Maggiore – Andrea Palladio – architecture at its best

- 1998 World Expo – Elite world designers re-inventing a "pavilion" to showcase ingenuity and culture. Re-commissioning and reusing to create new congregation zone.

ALBUFEIRA, PORTUGAL

- City that terraces towards the waters. City infrastructure and traffic patterns – horizontally and vertically. Incorporating vehicular traffic into existing city.

BARCELONA, SPAIN

- Basilica de la Sagrada Familia – Antonio Gaudi's body of work.
- Experience the Catalan people.

BILBAO, SPAIN

- Guggenheim Museum – Frank Gehry
- Pyrenees Mountain Ranges – A reminder that nature is perfect.

PARIS, FRANCE

- La Basilique du Sacre Coeur de Montmartre – Great siting overlooking the city.
- La Torre Eiffel and Arc de Triumphe – Iconic Monuments
- Le Louvre – I.M. Pei - Historic architecture and its contemporary adaptation.

FLORENCE, ITALY

- Palazzo Vecchio – Focal point of architectural organization
- Santa Maria del Fiore – Filippo Brunelleschi – largest brick dome in the world – engineering feat

ROME, ITALY

- Colosseum – large assembly spaces
- Roman Forum – examples of classical architecture
- The Pantheon – exquisite simplicity

VATICAN CITY

- Saint Peter's Basilica – Michelangelo, Bramante, Maderno, Bernini
- Sistine Chapel – Michelangelo
- Landlocked Sovereign State

YUCATAN PENINSULA, MEXICO

- Chichen Itza – Mayan Architecture

720.284.8787

Hello@RogueArchitecture.com

1660 Lincoln Street, Suite 100

Denver, CO 80264

Website and contents © 2013 – 2020 Rogue Architecture, Inc. All Rights Reserved.
Website designed and maintained by Spotlight Website Design.



Architecture

Rogue Architecture provides complete architectural and project development services to all their clients. The following is brief summary of the services we provide:

- Master Planning
- Campus Planning
- Building Assessment & Field Investigations
- Due Diligence Reports & Feasibility Studies
- Programming & Space Planning
- Architectural Design Guidelines
- Project Scheduling and Phasing
- Budget Analysis & Opinions of Probable Cost
- Marketing & Capital Campaign Assistance
- Entitlement & Site Plan Approvals
- Project Development w/ local AHJ
- Schematic Design/Interior Design
- Product & Material Selection
- Construction Documents/Bid Procurements
- Permit & Regulatory Approvals
- Construction Administration
- Record Documentation
- Post-Construction Services

Historic Architecture & Preservation

Rogue Architecture provides complete Historic Architecture Services including building assessment, historical reports, adaptive reuse, remedial implementation and budgeting.

Technology

Rogue Architecture utilizes the latest computer technologies to develop the required Construction Documents, Presentation Graphics and Project Management, including the following:

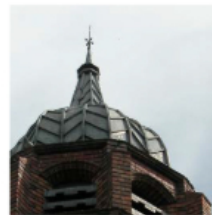
- Building Information Modeling (BIM)
- Realistic Renderings & Graphics
- Computer Generate Animations
- Energy Modeling

Sustainability

- Energy Conservation
- Use of Passive Design - orientation, daylight
- Use of Thin Film PV Panels
- Construction Waste Reduction
- Materials and Recycled Contents
- Local Availability of Materials and Labor
- Water Conservation
- Use of Reclaimed Water for Irrigation
- Design of Site Specific Landscape
- Create Poly-Cultured Landscapes
- IR Occupancy Sensors
- Dimming Panels w/ Timers
- Photocell integration to exterior lighting
- Use of Recovered Materials
- Brownfield Development

Building Envelope

- Air Barrier Peer Review at Design (in all of Rogue's Projects)
- Vapor Barrier Peer Review at Design (in all of Rogue's Projects)
- Roof & Flashing Peer Review at Design



UTILITAS
USEFULNESS
FUNCTION
SOLUTION



FIRMITAS
TRUE
STRENGTH
DURABILITY



VENUSTAS
BEAUTY
FORMS
AESTHETICS

720.284.8787

Hello@RogueArchitecture.com

1660 Lincoln Street, Suite 100

Denver, CO 80264



Collaboratives

Rogue Architecture has teamed up with multiple collaboratives to better serve its clients.



PIE Consulting & Engineering

PIE Consulting & Engineering is a leading forensic engineering and building sciences firm with office throughout the nation.



Western, LLC

Western, LLC provides turn-key facility development for the Oil & Gas and Aviation Industries.



The RMH Group

The RMH Group is a full service mechanical, electrical and industrial process consulting engineering firm.



A.D. Miller Services

A.D. Miller Services provides the highest quality construction and property management for the commercial industries.

Collaborative Services

In addition to the base Services performed by **Rogue Architecture**, the following is a summary of services provided through Collaborations with multiple Consultants:

Building Envelope

- Air Barrier Peer Review at Design (in all of Rogue's Projects)
- Vapor Barrier Peer Review at Design (in all of Rogue's Projects)

MEP Engineering

- Renewable Energy Measures
- Energy Conservation Measures
- Energy Master Plans - Future Expansion
- Steam Turbines
- HTHW and MTHW Systems
- Multi-Zoned Systems based on building orientation.
- Natural Ventilation
- Thermal User Control
- Energy Modeling
- Generator and Back-Up Power
- Energy Management Control Systems
- Chiller Optimization
- Humidity Control
- Addition / Upgrades to Energy Infrastructure

Structural Engineering

- AFTP - Blast Analysis
- HazL Testing
- Progressive Collapse Design
- Blast Resistance Retrofit to Ex'g Buildings
- Pre-Cast concrete panels

Civil Engineering

- EPA Permitting
- Stormwater Pollution Prevention Plans for Construction Activities
- Good Site Balance = Cut & Fill
- Positive Drainage

Landscape Architecture

- Irrigation Zones based on plant material
- Local landscape
- Understanding of Micro Climates
- Availability of Plant Material
- Vulnerabilities of Selected Landscape
- Maintenance
- Education of User to prolong life of landscape material
- Water Conservation
- Irrigation Design

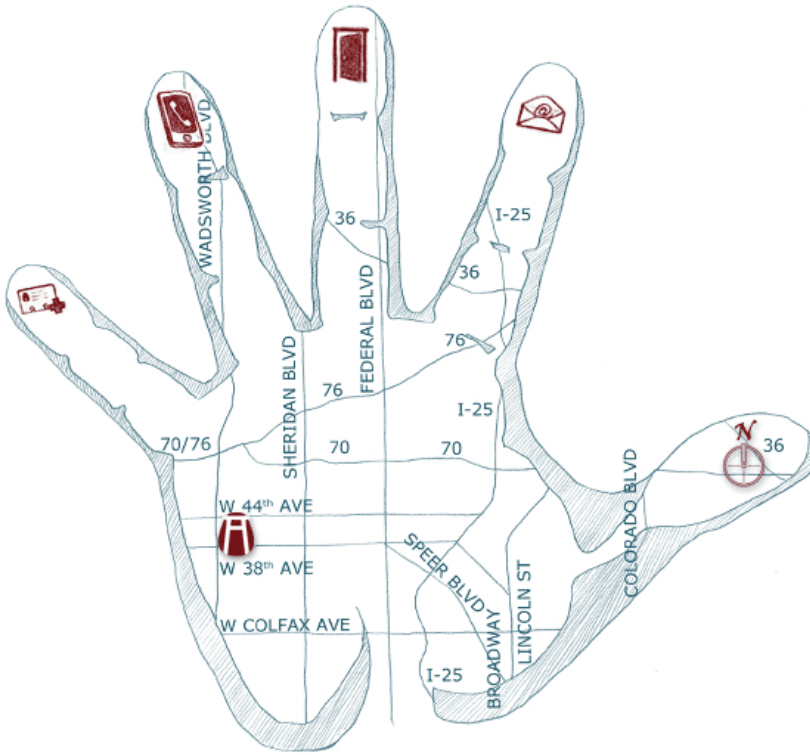
720.284.8787

hello@RogueArchitecture.com

1660 Lincoln Street, Suite 100

Denver, CO 80264

Website and contents © 2013 – 2020 Rogue Architecture, Inc. All Rights Reserved.
Website designed and maintained by [Spotlight Website Design](#).



JUAN GABRIEL LUNA, AIA, NCARB

Rogue Architecture, Inc
1660 Lincoln Street, Suite 100
Denver, CO 80264
720.284.8787
JLuna@RogueArchitecture.com

SCOTT A. BODUCH, AIA

Rogue Architecture, Inc
1660 Lincoln Street, Suite 100
Denver, CO 80264
303.901.0720
SBoduch@RogueArchitecture.com

720.284.8787

Hello@RogueArchitecture.com

1660 Lincoln Street, Suite 100

Denver, CO 80264