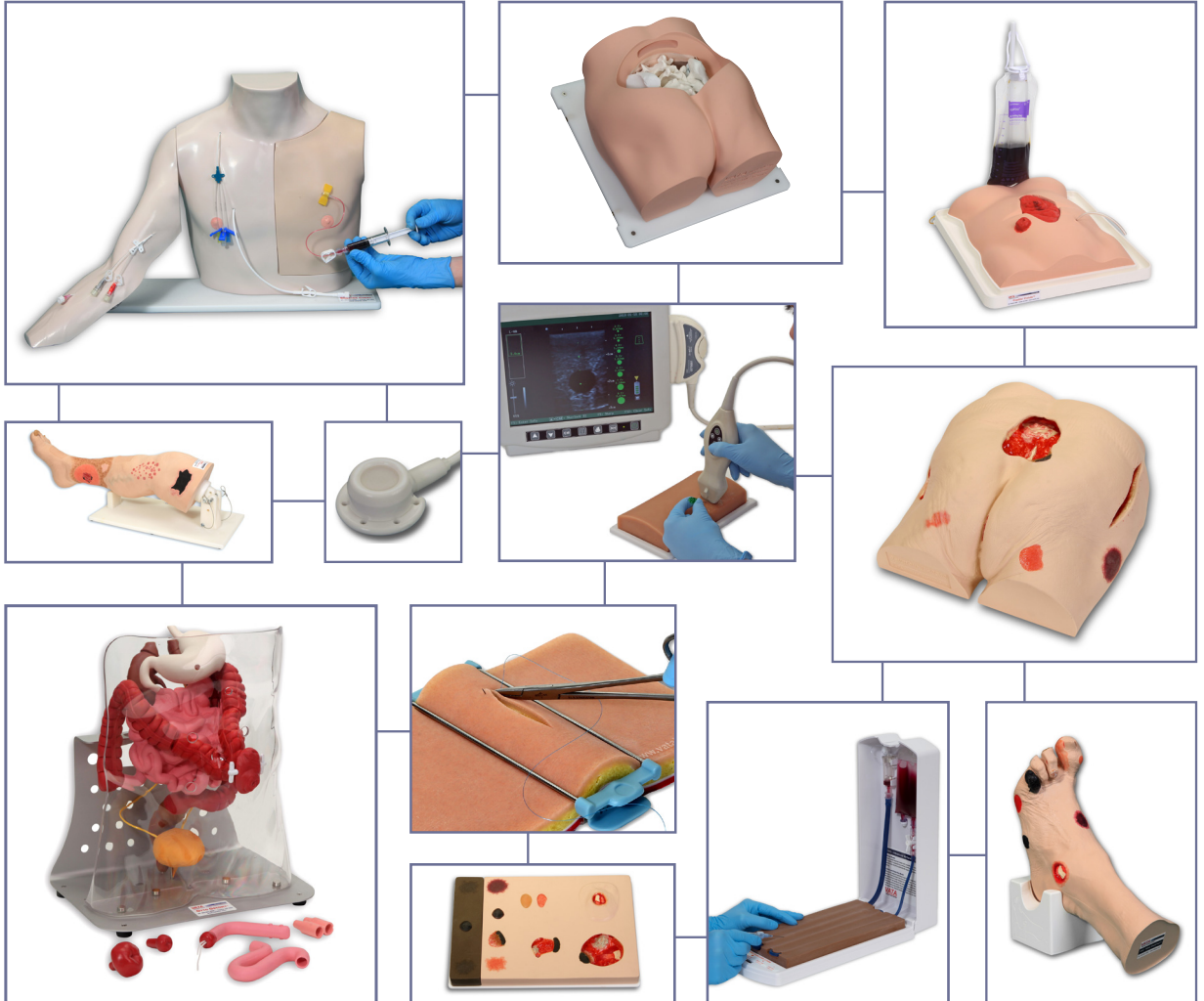


VATA

Realism in Clinical Simulation

2020 Product Catalog



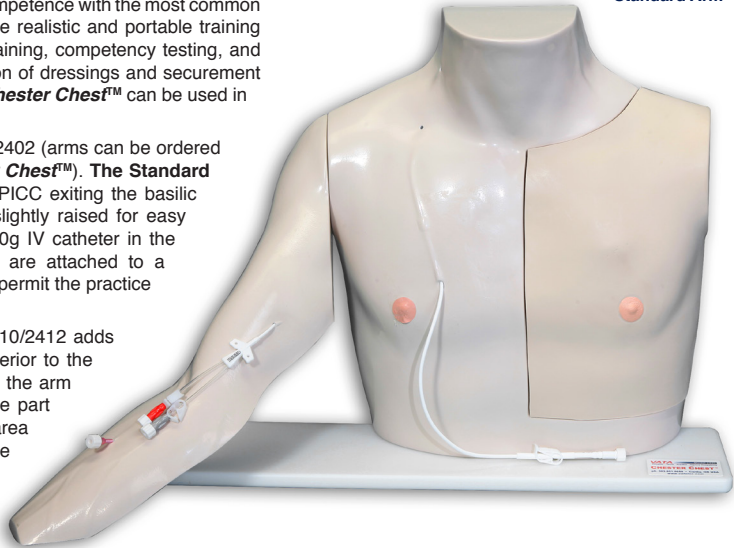
Chester Chest™ – 2400/2402/2410/2412

Chester Chest™, an industry standard for 30 years, enables clinicians, patients, and support persons to develop competence with the most common types of vascular access devices within one realistic and portable training aid. Chester is a great tool for teaching, training, competency testing, and skills assessment. Cleansing and application of dressings and securement devices can be demonstrated at all sites. **Chester Chest™** can be used in either an upright or supine position.

Chester Chest™ with Standard Arm 2400/2402 (arms can be ordered separately to update your existing **Chester Chest™**). The **Standard Arm – 2388/2389** has a dual lumen 5FR PICC exiting the basilic vein from the inner bicep area, which is slightly raised for easy identification as well as a pre-positioned 20g IV catheter in the forearm. The dual PICC and IV catheter are attached to a simulated blood reservoir bag in the arm to permit the practice of “blood” withdrawal and fluid infusion.

Chester Chest™ with Advanced Arm – 2410/2412 adds the ability to include a peripheral port posterior to the PICC insertion site in the recessed area of the arm (Optional port shown but not included—see part **0417** to order). The base of the recessed area is made of soft material that permits the port to “float” when accessed. This area is covered with a removable tissue-like flap which, when placed over the port, provides the realistic feel of palpating and

2400 – Shown with Standard Arm



Upgrade your current **Chester Chest™** with the **Advanced Arm – 2386!**



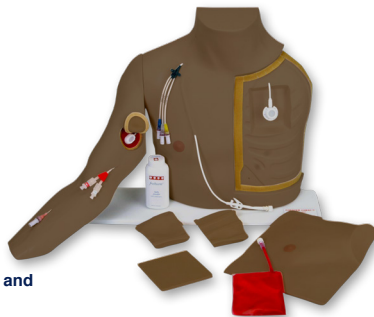
accessing. The Advanced Arm 2386/2387 can be purchased separately to update any Chester, new or old.

The right chest area of **Chester Chest™** has a 9.6FR Tunneled Central Catheter – 0407 that is visible up to the clavicle. Openings in the external jugular vein and subclavian are discernable and slightly raised for you to attach optional Triple Lumen Catheter – 0410. If you would prefer, you can send us the catheters your institution uses and we can install them for you.

The left chest area of **Chester Chest™** consists of:

- **Chest Tissue Flap - 0405/0404** – duplicates the feel of human tissue which provides realistic practice of palpating and accessing, that is confirmed by a “blood” withdrawal.
- An implanted port – 0406 under the chest tissue flap
- A rigid underlying surface with molded ribs and a recessed area for the interchangeable inserts
- **Accessing Inserts 0420/0421, 0430/0431 and 0440/0441**. The inserts can be placed either under or over the port to simulate various accessing scenarios: normal, “tipping”, “wandering” or deeply placed.

2412 - Shown with optional peripheral port and triple lumen catheter



Chester Chest™ – 2400/2402/2410/2412

Standard Arm – 2388



Outer Tissue Flap Replacement – 0405



Practice Port - 0406

Chester Chest™ Refurbishing Service

The purchase of training models is a significant financial investment. Realizing this, **VATA** is proud to offer a refurbishing service, to bring your model to new condition. Please call for instructions on how to return your model. Once your model is received, it will be evaluated and you will be contacted with the items and cost to refurbish for your approval, before any work is done. Turn-around time, to complete a refurbishing, is less than a week.

Chester Chest™

2400	Chester Chest™ with Standard Arm, lightly pigmented	
2402	Chester Chest™ with Standard Arm, darkly pigmented	
	Ship weight 10.0 lbs/4.5kg.....	\$816.00
2410	Chester Chest™ with Advanced Arm, lightly pigmented	
2412	Chester Chest™ with Advanced Arm, darkly pigmented	
	Ship weight 10.0 lbs/4.5kg.....	\$901.00

Accessories & Parts

0401	Optional Case (Soft Sided)	
	Ship weight 4.0 lbs/1.8kg	\$102.00
0405	Outer Tissue Flap Replacement, lightly pigmented	
0404	Outer Tissue Flap Replacement, darkly pigmented	
	Ship weight 2.0 lbs/907g	\$121.50
0406	VATA Practice Port (IVAD)	
	Ship weight 3.0 oz/85.1gt	\$74.00
0407	Tunneled Central Venous Catheter 9FR (CVC)	
	Ship weight 7.0 oz/198.4g	\$62.75
0408	Catheter PICC Line	
	Ship weight 7.0 oz/198.4g	\$62.75
0410	Optional Triple Lumen Catheter	
	(requires 0454 9.6FR Universal Catheter Connector for attachment)	
	Ship weight 7.0 oz/198.4g	\$73.25
0417	Peripheral Port (for Advanced Arm)	
	Ship weight 7.0 oz/198.4g	\$98.25
2386	Advanced Arm for Chester Chest™, lightly pigmented	
2387	Advanced Arm for Chester Chest™, darkly pigmented	
	Fits All Existing Chester Chest Models	
	Ship weight 2.0 lbs/907g	\$302.50
2388	Standard Arm for Chester Chest™, lightly pigmented	
2389	Standard Arm for Chester Chest™, darkly pigmented	
	Fits All Existing Chester Chest Models	
	Ship weight 2.0 lbs/907g	\$270.50

Vascular Access Ultrasound Phantom – 0705/0706

VATA's Vascular Access Ultrasound Phantom – 0705 is an excellent training phantom for the introduction and improvement of the techniques and psychomotor skills associated with successful ultrasound guided vascular accessing.

The unique material is flesh colored with the tactile feel and puncture resistance of human tissue. The curved contour on the top of the phantom is similar to contours on patients and has the added benefit of showing the importance of transducer positioning, as positioning can affect the quality of the image viewed - this is not possible on phantoms that are flat. The phantom can be imaged and accessed from the top, side or bottom surface, on the base or removed from the case.

We have been told by clinicians that this phantom has the best imaging of all currently available phantoms and some have commented that they reduce the gain on the ultrasound machine for advanced users wanting a more challenging vascular access experience. It is so realistic that movement of the soft tissue can be observed as the needle tip is guided to the vessel.

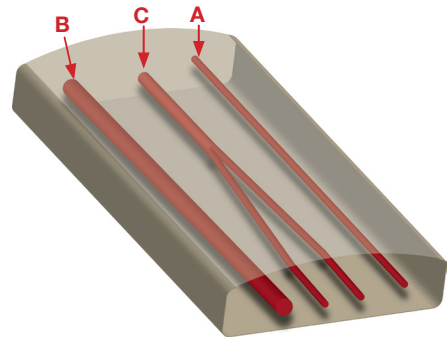
Successful accessing can be confirmed by visualization of the needle tip in the vessel and by a blood return. The very durable phantom material can be accessed 1,000s of times, is self-healing and can be refilled with the supplied stain resistant simulated blood. There is no need for special handling or refrigeration of the phantom.

VATA's Vascular Access Ultrasound Phantom – 0705 is an excellent model for beginners and more advanced clinicians in many areas of care including – simulation labs, IV nursing, anesthesiology, radiology, ultrasound training, nurse practitioners, emergency medicine and others.



VATA's Vascular Access Ultrasound Phantom – 0705 has three vessels contained within the phantom:

- A** Small superficial vessel
- B** Large deeply placed vessel
- C** Mid-sized vessel which bifurcates into two smaller vessels



The model is supplied pre-filled with a stain resistant simulated blood, a separate 60ml bottle of stain resistant simulated blood, and a lightweight, compact, form-fitting case that protects the phantom when not in use and is the most compact housing of all currently available phantoms.

The phantom is compatible with any ultrasound imagining system with appropriate transducer.

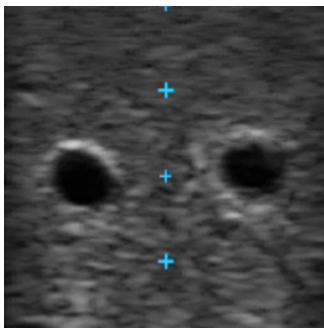
Phantom in case measurement: 8.25" x 5.2" x 1.75", 1.3 lbs. (20.9cm x 13cm x 4.5cm, 587g)

Phantom out of case measurement: 7" x 4" x 1.3", 1 lb. (18cm x 10.3cm x 3.4cm, 450g)

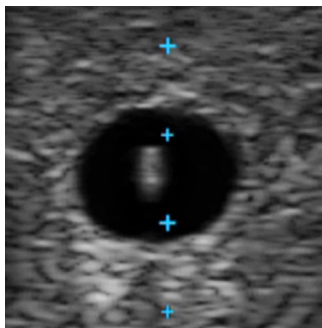
Vascular Access Ultrasound Phantom

- 0705 Vascular Access Ultrasound Phantom, lightly pigmented**
- 0706 Vascular Access Ultrasound Phantom, darkly pigmented**
Ship weight 1.3lbs/587g.....\$468.00
- 0751 Replacement Simulated Ultrasound Blood 8 oz.**
Ship weight 9.6 oz/273g.....\$29.00

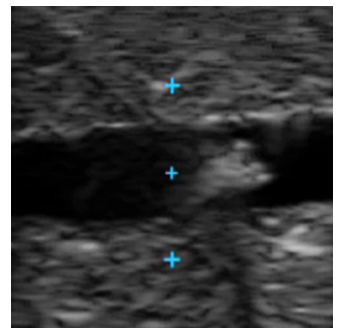
Vascular Access Ultrasound Phantom – 0705/0706



Bifurcated vein



Large vein being accessed



Longitudinal access of small vein

Suture Skills Trainer – 3500

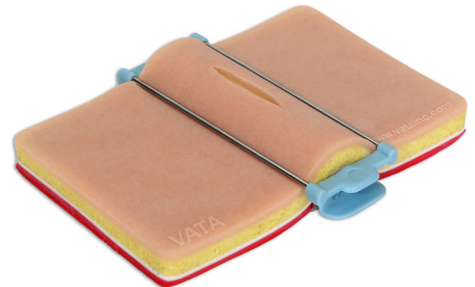
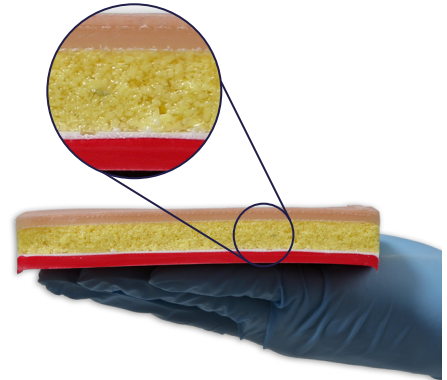
The **Suture Skills Trainer – 3500** was developed with the help of Dr. Michael Zenn, Director of the Human Tissue Lab at Duke University.

The realistic tissue pad consists of 5 anatomically correct tissue layers:

- Epidermis
- Dermis
- Subcutaneous fat
- Fascia
- Muscle

Each individual layer is identifiable and of the anatomically correct color, strength, firmness and feel. The unique materials used allow for practicing superficial, subcuticular and complex deep wound suturing and with proper tension, the suture will not “tear through”. The **Suture Skills Trainer’s** tissue pad moves just like real human tissue when making an incision or when suture tension is applied. Sutures can be removed and you can reuse the site numerous times.

The trainer is also supplied with a proprietary tensioning device for use with the tissue pad, so the user can adjust the distance between the two cut tissue edges. This offers the user a more realistic feel and increases the challenge when closing the tissue under varying degrees of tension.



Suture Skills Trainer – 3500

The instruments are of a much higher quality than those generally supplied with suture models. The **Suture Skills Trainer – 3500** comes with everything you need:

- Needle driver
- Adson 1-2 forceps
- Hooked Littauer scissors
- Surgical safety scalpel for reduced risk of injury
- Skin staple remover
- One dozen nylon sutures
- Disposable skin stapler
- Custom carrying case is lightweight, compact and specially designed for each of the trainer's components

Practice outside the simulation lab is so important to develop proper surgical technique and with the **Suture Skills Trainer – 3500**, you can take it anywhere to enhance developing psychomotor skills, proper surgical technique, competence and confidence.



Suture Skills Trainer

- 3500 Suture Skills Trainer, lightly pigmented
- 3502 Suture Skills Trainer, darkly pigmented
Ship weight 2.26lbs/1.0kg \$224.00

Accessories & Parts

- 3501 Suture Pad Lightly Pigmented – Replacement
- 3503 Suture Pad Darkly Pigmented – Replacement
Ship weight 1.1lb/516g..... \$96.00
- 3510 Tension Device – Replacement
Ship weight 4.6oz/132g..... \$59.00
- 3515 Instrument Kit – Replacement
Ship weight 3.9oz/111g \$44.00
- 3516 Skin Stapler
Ship weight 1.0lb/454g..... \$14.25
- 3517 Skin Staple Remover
Ship weight 1.0lb/454g..... \$4.95
- 3525 Sutures (1 doz.)
Ship weight 3.9oz/111g \$11.75
- 3535 Case – Replacement
Ship weight 7.6oz/217g..... \$53.00

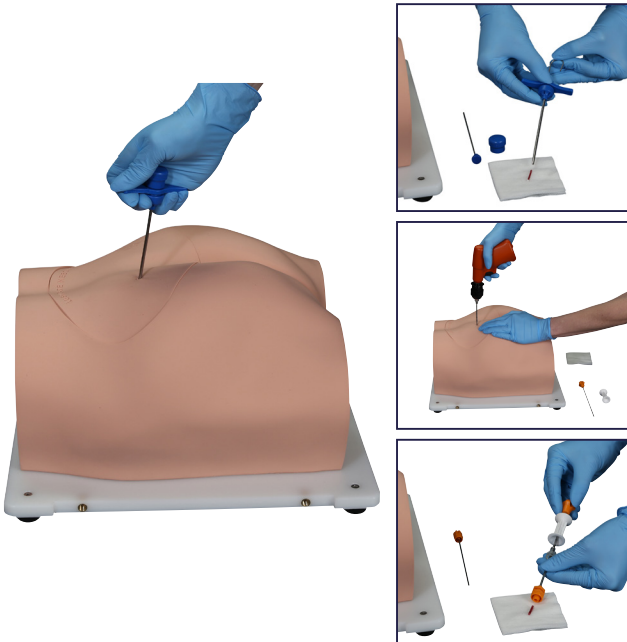
Bonnie Bone Marrow Biopsy™ Skills Trainer – 0240

Bonnie Bone Marrow Biopsy™ Skills Trainer was developed with clinician input to provide a realistic simulation for teaching and practicing bone marrow biopsy procedures of the posterior spine and pelvic region. Bonnie was modeled from an average size female pelvic bone and spine to allow for the palpation of landmarks, such as the spinous process and the anterior and posterior iliac crests to facilitate proper biopsy needle placement.

The **Bonnie** trainer includes a tilt base to simulate treating patients in prone or lateral decubitus (side-lying) positions. Right and left posterior iliac crest bone inserts are designed to be replaceable and incorporate simulated bone marrow that can be extracted during simulated biopsy procedures to confirm proper technique.

The body skin shell has a soft feel and can be easily removed to expose the entire underlying pelvic/spine anatomy and to facilitate the replacement of the iliac crest bone inserts. The design also incorporates a replaceable puncture site insert located over the posterior iliac crest bones, to allow for multiple site punctures.

Bonnie Bone Marrow Biopsy™ Skills Trainer can help your clinical staff gain valuable skills while building the confidence and competence needed for safe biopsy procedures.



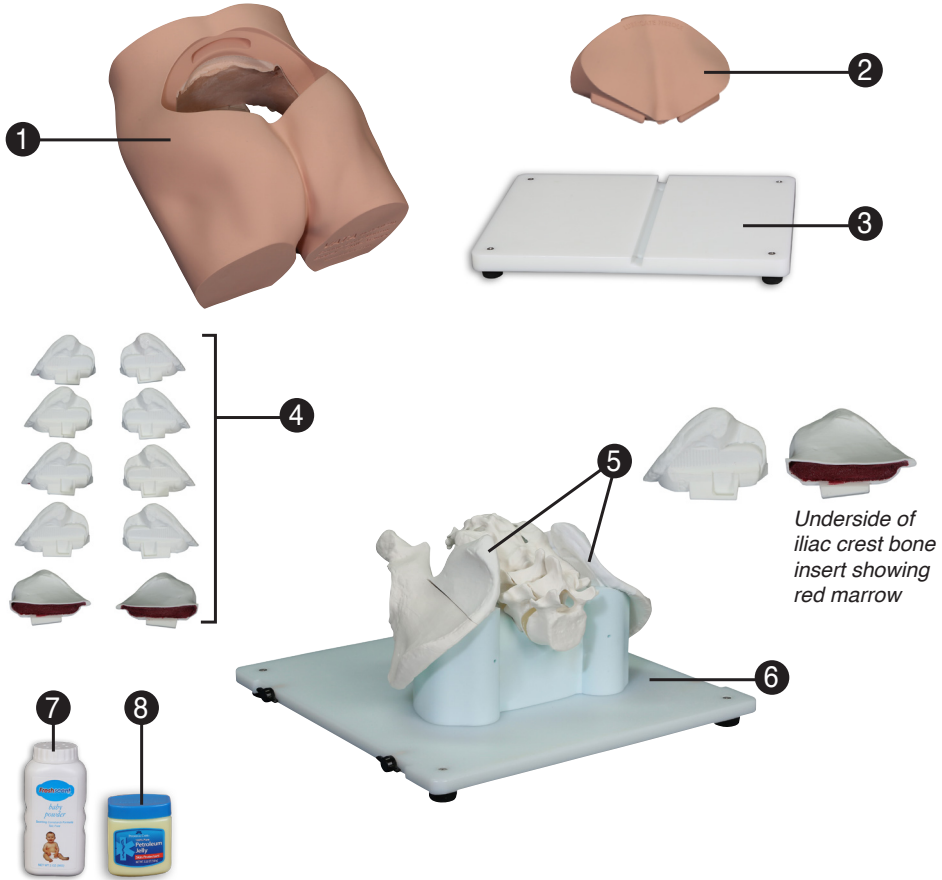
Bonnie Bone Marrow Biopsy™

- 0240 Bonnie Bone Marrow Biopsy™ Skills Trainer**
Includes, pelvic bone structure on base with tilt stand, six sets of replaceable posterior iliac crest bone inserts, body skin shell, puncture site skin insert and soft-sided product carrying case.
Ship weight 20.0 lbs/9.07kg \$1,925.00

Accessories & Parts

- 0242 Replacement Body Skin Shell**
Ship weight 5.5 lbs/2.5kg \$711.00
- 0243 Replacement Puncture Site Skin Insert**
Ship weight 2.5 lbs/1.1kg \$243.00
- 0244 10-Degree Tilt Base**
Ship weight 4.3 lbs/1.9kg \$166.25
- 0246 Replacement Iliac Crest Bone Inserts - 5 Sets**
Includes left and right
Ship weight 1.3 lbs/590g \$284.50
- 0247 Replacement Puncture Site Skin Insert and 5-Sets Iliac Crest Bone Inserts**
Includes left and right
Ship weight 3.5 lbs/1.59kg \$478.00

Bonnie Bone Marrow Biopsy™ Skills Trainer – 0240



- 1 Replaceable - Body Skin Shell - 0242
- 2 Replaceable - Puncture Site Skin Insert - 0243
- 3 10-Degree Tilt Base - 0244
- 4 5 Sets Replaceable Iliac Crest Bone Inserts - 0246

- 5 Replaceable - Left & Right Iliac Crest Bone Insert
- 6 Base Tray with non-skid pads
- 7 Baby Powder for skin surfaces
- 8 Vaseline to lubricate the biopsy needles

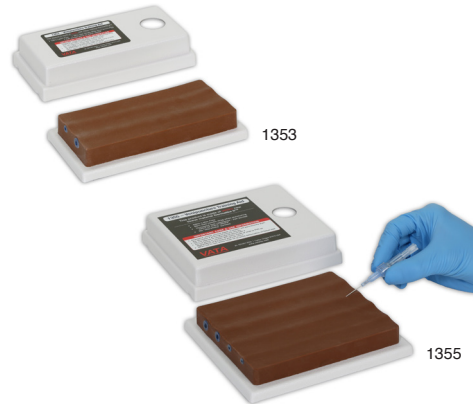
Venipuncture Training Aids – 1352/1353 Two-Vein or 1354/1355 Four-Vein

Venipuncture Aids are 100% Latex Free and available in both light and dark pigments.

100% Latex-Free! These unique training aids are simpler and smaller versions of our popular **Advanced Venipuncture Training Aid™ - 2365**. The **Venipuncture Training Aid - 1352** has two barely discernable blue veins of different inside diameters, positioned at the same depth in our material, **Dermalike II™**, semi-transparent, soft tissue-like material, while the **1354 Venipuncture Training Aid** has four barely discernable blue veins in three different sizes – with a fourth vein more deeply placed. Your patients don't have one size of veins, so why practice and learn on a "one size vein fits all" IV arm? Many clinicians have commented when using various other IV training models, "I wish all our patients had veins this big". These models were specifically designed to make accessing more challenging, as this is how technique and confidence are improved.

This model permits clinicians to learn technique and gain initial confidence when accessing the larger veins. Competency and technique can be improved by progressing from the easier large veins to the more difficult smaller and deeper veins. When accessing, the skin rolls as the vein is palpated and a "pop" is felt as the needle enters the vein. Many hospitals and home health sites utilize these training aids to insure that the competency of all staff members is assessed, maintained, demonstrated and improved continually.

Made with latex-free **Dermalike II™** with 60% less needle drag when accessing the underlying veins and improved tear resistance to permit a greater number of needle "sticks". You do not need to use excessive force to access as has been reported when accessing the latex veins still used by other manufacturers. Redesigned, these models now come with a snap-on cover to protect the tissue pad when stored. These compact, lightweight, easily transportable, economical, and non-staining training aids are a great alternative to larger, heavier and more expensive models.



100% Latex-Free

Two-Vein Venipuncture Training Aid

- 1352 Two-Vein Venipuncture Training Aid, lightly pigmented**
 6 1/2" X 3 1/4" X 1"
 Includes two barely discernable blue veins of different inside diameters positioned at the same depth in a **Dermalike II™** semi-transparent, soft tissue-like pad, base and a detachable snap-on cover.
- 1353 Two-Vein Venipuncture Training Aid, darkly pigmented**
 Same as 1352, but darkly pigmented.
 Ship weight 1.0 lb/454g.....\$99.50

Four-Vein Venipuncture Training Aid

- 1354 Four-Vein Venipuncture Training Aid, lightly pigmented**
 6 1/2" X 5 1/2" X 1 1/4"
 Includes four barely discernable blue veins in three different sizes – with a fourth vein more deeply placed in a **Dermalike II™** semi-transparent, soft tissue-like material, base and detachable snap-on cover.
- 1355 Four-Vein Venipuncture Training Aid, darkly pigmented**
 Same as 1354, but darkly pigmented.
 Ship weight 1.5 lbs/680g.....\$143.00



Advanced Venipuncture Training Aid™ – 2365/2366

Our **Advanced Venipuncture Training Aid™** features four barely discernible blue veins in three different sizes, with the fourth vein deeply placed, all within our proprietary latex-free **Dermalike™** for a realistic training scenario just like accessing a real patient! As the IV catheter enters the vein, a realistic “flashback” of simulated blood confirms proper needle placement, helping build hand-eye coordination, confidence, and improving competency, while insuring your patient’s safety.

Hinged top and base eliminate the need to pass components through the top.

Leak resistant – Features a single length of tubing, no connections needed.

No Velcro needed – Bubble trap and stopcock removal and replacement are confirmed by an audible “click”. The hinged top has an integrated molded hook for placement of blood bag.



2365



2366

Actual Inside Lumen of Veins

- Large Vein - Deep
4.3mm ID
- Large Vein
4.3mm ID
- Medium Vein
2.3mm ID
- Small Vein
1.3mm ID

100% Latex-Free

Advanced Four-Vein Venipuncture Training Aid™

- 2365 Advanced Four-Vein Venipuncture Training Aid™, lightly pigmented**
Includes four blue veins in a semi-transparent, tissue-like material measuring 5” x 10”, simulated blood reservoir bag, quick disconnect connector, bubble trap and backing plate that is also used as a cover when not in use.
- 2366 Advanced Four-Vein Venipuncture Training Aid™, darkly pigmented**
Same as 2365, but darkly pigmented.
Ship weight 3.0 lbs/1.4kg\$311.00

Accessories & Parts

- 0385 Optional Case**
Protect, store and transport the Advanced Venipuncture Training Aid™ - 2365 in this durable, zippered, padded fabric bag with storage pouch for supplies.
Ship weight 2.0 lbs/907g \$46.10



- 2367 Simulated Blood Reservoir – with Stopcock**
Ship weight 1.0 lb/454g \$43.25
- 1491 Simulated Blood - Stain Resistant One Quart**
Ship weight 1.0 lb/454g \$14.25
- 1494 Simulated Blood - Stain Resistant One Gallon**
Ship weight 2.0 lbs/907g \$23.25
- 2381 Replacement tissue pad/vein, lightly and darkly pigmented**
Ship weight 2.0 lbs/907g \$182.50
- 2368 Replacement Bubble Trap**
Ship weight 1.0lb/454g \$12.45

Port - Body in a Box™ – 5010/5011

Compact, lightweight, quick to set up and store. Great tool for training, competency testing and skills assessment for port (IVAD) palpation and accessing. Comes with a **real port**. With this model, it is possible to simulate accessing the following port placements: normal, “tipping”, “wandering” or deeply placed. Successful access is confirmed by a “blood” return. Fluid can be infused and “blood” withdrawn, as the model has its own 35cc “blood” reservoir bag neatly tucked inside. Accessing can be taught and practiced within the case or removed for group use.

The two round inserts, used to simulate the “wandering” and “tipping” port, are interchangeable to vary the experience. The skin flap has two thicknesses - the 1/4” side will approximate the feel when palpating a port at an average depth, while the 1/2” side will approximate the feel when palpating a deeply placed port. The skin flap is made of **VATA’s Dermalike II™** material, with 60% less needle drag when accessing, improved tear resistance to accept twice the number of needle sticks, no “oily/sticky” surface, and is stain resistant. The underlying soft tissue block permits the port to “float” when palpating through the skin flap, for a truly realistic experience.



5011



5010

Port - Body in a Box™

- 5010 Port - Body in a Box™, lightly pigmented**
Includes a **real port** with 9.6FR catheter. Skin Flap - 7 1/8" X 5 1/2", half at 1/4" thick and half at 1/2" thick; Soft tissue block with two interchangeable inserts that can simulate a “tipping” or “wandering” placement - all made of our new tissue material, **Dermalike II™**, 35cc “blood” reservoir bag in the tissue block for fluid infusion or “blood” withdrawal; 3/4" and 1" Huber needle w/ ext. set (one each); 5cc leuc-lock syringe - 3 packets of lubricating gel for simulation of a “wandering” port - Clear container for storage of supplies- User’s Manual and heavy duty case - 9 1/2" X 6 1/2".
- 5011 Port - Body in a Box™, darkly pigmented**
Same as 5010, but darkly pigmented.
Ship weight 3.0 lbs/1.4kg \$207.00

Accessories & Parts

- 0406 VATA Practice Port (IVAD)**
Ship weight 3.0 oz /85.1g \$74.00
- 1491 Simulated Blood - Stain Resistant One Quart**
Ship weight 1.0 lb/454g \$14.25
- 1494 Simulated Blood - Stain Resistant One Gallon**
Ship weight 2.0 lbs/907g \$23.25
- 5025 3/4" 20G Right Angle Huber Needle with 8" Extension, Set (1 doz.)**
Ship weight 5.0 oz /142g \$52.25
- 5026 1" 20G Right Angle Huber Needle with 8" Extension Set (1 doz.)**
Ship weight 5.0 oz /142g \$52.25

120322

Nita Newborn™ Infant Venous Access Simulator – 1800

100% Latex-Free

A unique, anatomically correct representation of a 4 lbs., 16" female baby developed to teach and practice the vascular accessing of newborns and infants, including the availability of those veins uniquely used in this age group. There are barely discernable blue veins under the replaceable translucent "skins" on the head, right and left arms and the right leg. Veins made with latex-free **Dermalike II™** – with 50% less needle drag when accessing and improved tear resistance to permit a greater number of needle "sticks". The veins presented include the temporal, external jugular, post-auricular, basilic, cephalic, saphenous and popliteal. When accessing a "pop" is felt as the needle enters the vein followed by a realistic flashback of simulated blood confirming proper needle placement. The veins were specifically designed to have a small internal diameter, as you would find on a small newborn, to make accessing more challenging, improving technique and confidence. You can practice accessing, securing, dressing, site care, and maintenance for standard IVs and PICC (Peripherally Inserted Central Catheter).

Nita Newborn™ also incorporates a unique life-like umbilicus allowing for the repeated use of a 5FR umbilical catheter to access the umbilical vein, with proper placement verified by a "blood" return. Umbilical tape can be tied around the umbilicus to secure the catheter. Nasal and oral openings allow placement of nasal cannulas, as well as endotracheal, nasogastric, and feeding tubes to teach suctioning, securing, dressing, cleansing, and maintenance. A great tool for teaching, training, competency testing and skills assessment.



Nita Newborn™

1800 Nita Newborn™

Includes an anatomically correct representation of a 16" female baby, replaceable translucent "skins" on the head, right and left arms and right leg, underlying blue veins now made with latex-free, accessible umbilicus, "blood" fluid bag with attached tubing, simulated blood, diaper, user manual and durable, zippered, padded carrying case with handles.

Ship weight 6.0 lbs/2.7kg \$723.00

Accessories & Parts

1801 Replacement Skin Set - Latex Free (Head, Leg, Right Arm and Left Arm) & Vein Set

Ship weight 2.0 lbs/907g \$181.50

1805 New Vein Set with Umbilical Valve Attached-Latex Free (replaces 0803)

Ship weight 14.0 oz/397g \$103.75

1491 Simulated Blood - Stain Resistant One Quart

Ship weight 1.0 lb/454g \$14.25

1494 Simulated Blood - Stain Resistant One Gallon

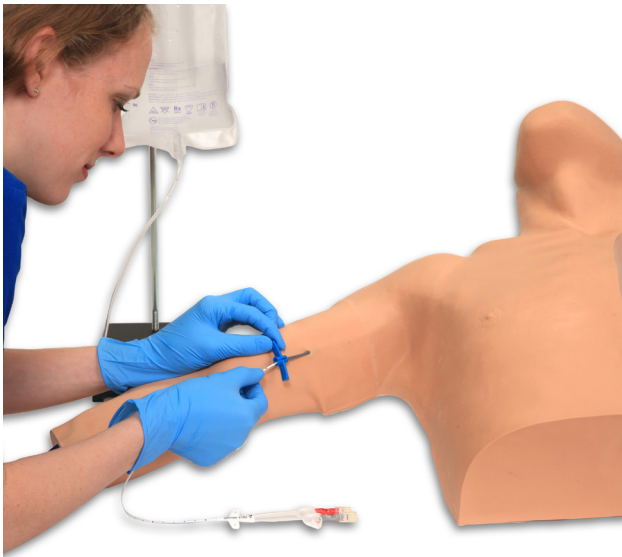
Ship weight 2.0 lbs/907g \$23.25

0804 Replacement Umbilicus

Ship weight 1.0lb/454g \$41.15

Peter PICC Line™ – 0600

The only available teaching model that permits the practice of placing Peripherally Inserted Central Catheter Lines (PICC Lines). The rapid acceptance and increased use of PICC lines creates a need to be able to properly teach this procedure. **Peter PICC Line™** allows the teaching, practice and assessment of this insertion technique. This portable teaching model has a replaceable translucent arm skin that allows the visualization of the underlying cephalic, basilic and median basilic veins which are presented as barely visible blue veins. The superior vena cava, subclavian, axillary and jugular veins are also present, plus a movable chin that when turned can simulate the occlusion of the jugular to prevent the PICC Line from traveling this route. Proper placement can be confirmed by viewing the distal tip of the PICC in the viewable superior vena cava on the side of the model. Comes with removable ribs with overlying tissue pad. The ribs are palpable and, with the landmarks on the chest, permit the practice of measuring catheter length to the correct intercostal space. The life-sized model permits the supplies needed for a PICC insertion to be laid out and sterile technique taught as well as practiced. A great tool for teaching, training, competency testing and skills assessment. Includes a durable zippered, padded, carrying case with handles and a zippered supplies pouch.



Peter PICC Line™

0600 Peter PICC Line™

Includes life-sized chest, right arm, neck and chin, replaceable body and translucent arm “skins”, removable ribs with overlying tissue pad, underlying separate arm and body blue veins, viewable superior vena cava vial, “blood” fluid bag with attached tubing, simulated blood, user manual and durable, zippered, padded carrying case with handles and a zippered supplies pouch.

Ship weight 12.0 lbs/5.4kg\$799.50

Accessories & Parts

0601 Arm Vein Tubing Set

Replacement arm vein tubing consisting of the basilic, cephalic and median basilic veins for attachment to body veins.

Ship weight 7.5 oz/213g\$95.25

0602 Body Vein Tubing Set

Replacement body vein tubing consisting of the axillary, jugular and subclavian for attachment to arm veins, with attached connectors.

Ship weight 8.0 oz/227g\$103.25

0603 Arm Skin Replacement

Ship weight 9.0 oz/255g\$75.25

0604 Body Skin Replacement

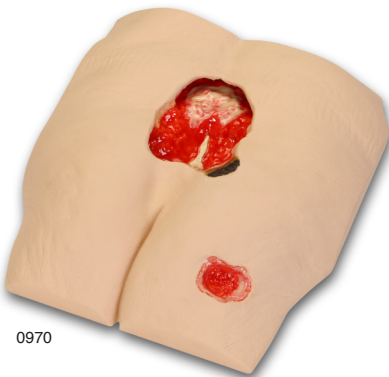
Ship weight 3.0 lbs/1.4kg\$134.00

Stan Stage 4 Pressure Injury Model™ – 0970/0975

Designed for teaching and training with vacuum assisted closure and negative pressure wound therapy devices, **Stan** features a large sacral Stage 4 pressure injury* (NPUAP 2016 – Pressure Ulcer Staging Guidelines), with eschar, subcutaneous fat, undermining, tunneling, slough, eschar and exposed bone (with osteomyelitis) and a Stage 3 pressure injury with subcutaneous fat and granulation tissue. The large size and depth of the Stage 4 pressure injury, as well as the undermining and tunneling, make it ideal for practicing the proper dressing and preparation of a large wound for use with a negative pressure wound therapy device. The Stage 3 pressure injury is positioned so that the Stage 4 can be dressed by itself or a “bridging” dressing can be applied to the Stage 4 and Stage 3 to demonstrate and practice this skill. The skills that healthcare professionals learn with this model can be used to obtain positive outcomes with a variety of chronic and acute wound types, such as other pressure injuries, diabetic wounds, abdominal wounds, trauma wounds, flaps and grafts. Compact and weighing only 2 lbs., this model is easily transportable.

This model is made of a unique, flexible material that permits the application and removal of dressings without leaving an adhesive residue.

A great tool for training, competency testing, skills assessment, dressing techniques and use of negative pressure wound therapy devices!



Stan Stage 4 Pressure Injury Model™

- 0970 Stan Stage 4, lightly pigmented**
9" X 9" X 4 1/2"
- 0975 Stan Stage 4, darkly pigmented**
Same as 0970, but darkly pigmented.
Ship weight 3.0 lbs/1.4kg **\$369.00**

Accessories & Parts

- 0971 Optional Carrying Case**
A durable, zippered, padded fabric case with carrying handles and storage pouch for supplies
Ship weight 2.0 lbs/907g **\$48.00**



120322

Otto Ostomy™ – 0310

A better understanding of Ostomies... From the Inside Out!

Otto Ostomy™ will help clinicians, staff and patients along with their families and friends become more knowledgeable about what to expect, while learning how ileostomies, colostomies, gastrostomies, ureterosigmoidostomies and tube cecostomies function. The more healthcare providers understand ostomies, the better they will be able to educate and encourage their patients about this life-changing event. To a great extent, ostomy care is a visual specialty. This has been described as the patient seeing and understanding “how their ‘plumbing’ has been rearranged”. With **Otto Ostomy™**, healthcare staff and patients can visually grasp, in a life-sized 3D model, what they may have had difficulty understanding from pictures and a verbal description. Seeing the 3D digestive and urinary tracts and visualizing the location and function of the various organs is essential to learning, especially in those cases where cognitive processes or language may be an obstacle. Proper teaching helps increase patients’ understanding of their condition and the adjustments which may be necessary for achieving a satisfactory standard of life with their new stoma.

Using the organs and stomas on **Otto Ostomy™**, helps clinicians learn to quickly diagnose problems, plan, implement and evaluate care specific to the simulation displayed in skills lab, or demonstrate their

proficiency in competency testing, which results in confident staff and the best patient outcomes. Pre-operative teaching allows patients and their families to begin learning about ostomies prior to surgery when they are less distracted—reducing anxiety. That’s why **VATA**, a leader in anatomical healthcare models, has created **Otto Ostomy™**, the ultimate educational tool for nurses and patients.

The organs on **Otto Ostomy™** were molded from an actual patient’s CT scan, resulting in all the organs on the model being of the exact size and location as they were in the patient. **Otto Ostomy™** has the following structures molded from the same patient:

- Stomach
- Large Intestine
- Kidneys
- Bladder
- Small Intestine
- Rectum
- Ureters
- Clear Torso Shell



Otto Ostomy™

0310 **Otto Ostomy™ Advanced Model**

Includes anodized aluminum base, clear torso shell with five openings for stoma placement and gastrostomy tube, stomach, small intestine, four large intestine segments, rectum, kidneys, ureters, bladder, ileal conduit, two small intestine segments, ileostomy adapter, colostomy adapter, 18 stomas: 7/8" diameter, 2" diameter, Urostomy with 3" Stents (to be used with the ileal conduit), loop stoma with rod, Loop without Rod, Double Barrel, Oval, Mushroom, Prolapsed, 3" Diameter, Granuloma, Necrotic, Ischemic, In-Skin-Fold, Parastomal Hernia, Mucocutaneous Separation, Recessed, Flush, foam stoma storage board, carrying case and user manual.

16.25" X 10" X 16"

Ship weight 19 lbs/8.6kg\$1,647.00

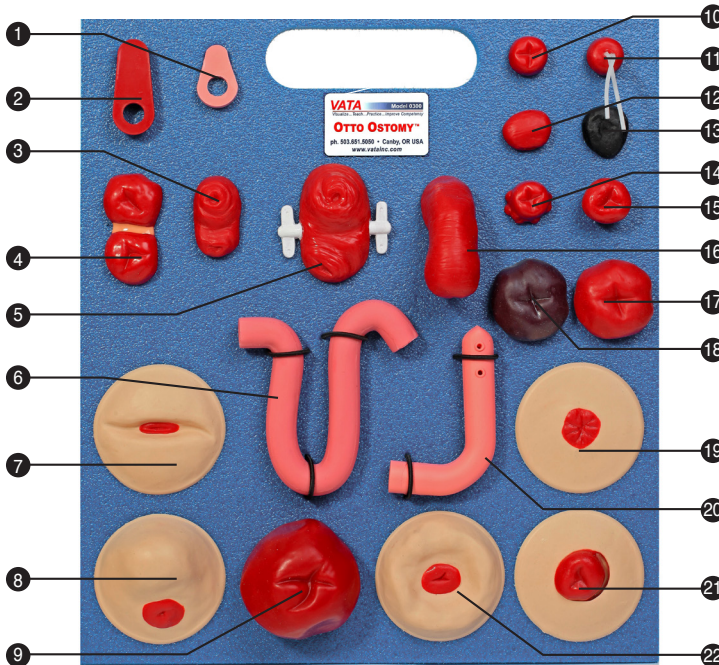
Accessories & Parts

0305 **Advanced Stoma Package - Replacement**

16" x 14" x 2 3/4"

Ship weight 3.0 lbs /1.4kg\$434.00

Otto Ostomy™ Advanced Stoma Package – 0305



- 1 Ileostomy Adapter – 0342
- 2 Colostomy Adapter – 0343
- 3 Loop Stoma without Rod – 0315
- 4 Double Barrel Stoma – 0316
- 5 Loop Stoma With Rod – 0314
- 6 Small Intestinal Segment – 0341
- 7 In-Skin-Fold Stoma – 0330
- 8 Parastomal Hernia Stoma – 0331
- 9 3" Diameter Stoma – 0322
- 10 7/8" Diameter Stoma – 0311
- 11 Urostomy Stoma With 3" Stents In Place – 0313
- 12 Oval Stoma – 0319
- 13 Necrotic Stoma – 0324
- 14 Granuloma Stoma – 0323
- 15 Mushroom Stoma – 0320
- 16 Prolapsed Stoma – 0321
- 17 2" Diameter Stoma – 0312
- 18 Ischemic Stoma – 0325
- 19 Flush Stoma – 0334
- 20 Ileal Conduit – 0340
- 21 Mucocutaneous Separation Stoma – 0332
- 22 Recessed Stoma – 0333

Carrying Case Included



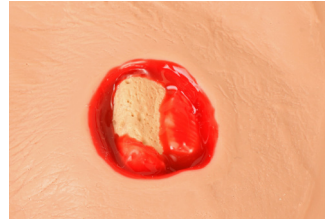
Pat Pressure Injury Staging Model™ – 0980

A unique, compact, comprehensive and realistic model displaying the following pressure injuries* (NPUAP 2016 – National Pressure Ulcer Advisory Panel): Stage 1 (in both darkly and lightly pigmented skin), Stage 2 (as an intact blister and an open wound), Stage 3 with eschar, subcutaneous fat, slough, undermining, tunneling, slough and granulation tissue, a shallow Stage 4 over the malleolus with exposed tendon and bone (with osteomyelitis), and a Stage 4 with eschar, slough, undermining, tunneling and exposed tendon, muscle and bone (with osteomyelitis). The lightly pigmented skin also displays a DTPI (Deep Tissue Pressure Injury) and blood blister. The darkly pigmented skin section shows how different a Stage 1, blood blister and DTPI may appear depending on the pigmentation of the skin. The DTPIs, when palpated, have a “mushy/boggy” feel, which can be helpful in darkly pigmented patients where visualization of the injury may not be apparent. In the past, healthcare providers have been taught wound care through high-quality photographs and video. **Pat Pressure Injury Staging Model™** brings wound care alive in a way that even the best of photographs cannot do. This model makes it possible to visualize and understand the differences in wounds. Great care has been taken to color each wound just as you would see it on a patient. Once the different wounds are understood, you can discuss assessment and devise treatment plans that will deliver optimized patient care.

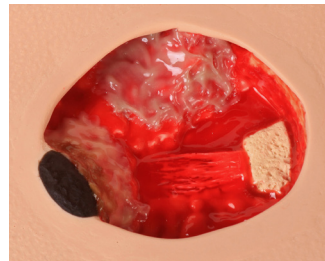
Pressure injury assessment has become critical to the operation of health agencies, as inaccurate wound assessment can affect reimbursement, cause inaccurate reporting of patient outcomes and the appearance of potential adverse events. **Pat Pressure Injury Staging Model™** is an effective tool to educate all healthcare providers, patients, families and caregivers in the identification and staging of pressure injuries. This model is also an excellent visual aid for educating those who cannot read well enough to understand basic health care information, allowing them to see what can occur without proper care. Routine cleansing and dressing changes can be taught and practiced on all the wounds.

This product is made of a unique new material that permits the application and easy removal of dressings without the need to constantly cleanse the skin of residual adhesive.

A great tool for training, competency testing, skills assessment and dressing techniques!



Shallow Stage 4 over the malleolus with exposed bone and tendon.



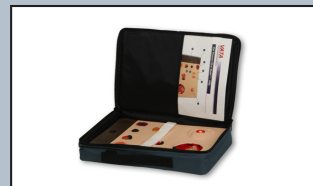
Stage 4 with exposed bone, tendon, muscle and undermining, tunneling, eschar and slough.

Pat Pressure Injury Staging Model™

- 0980 Pat Pressure Injury Staging Model™**
8 1/4" X 12 1/2" X 1 3/4"
Ship weight 5.0 lbs/2.3kg\$449.00

Accessories & Parts

- 0981 Optional Carrying Case**
A durable, zippered, padded fabric case with carrying handles and pockets for supplies
Ship weight 2.0 lb/907g\$55.00



Wilma Wound Foot™ – 0950/0955

The newest and most comprehensive model of its kind, molded from an 80-year old patient for a true-to-life experience when assessing the various wounds. Twenty different conditions are presented on **Wilma Wound Foot™** so you can see and understand how they are different. Great care has been taken to color each wound just as you would see it on a patient. Once the different etiologies are understood, you can discuss and devise treatment plans that will deliver optimized patient care.

Wound assessment has become critical as inaccurate wound assessment can misdirect the plan of care, affect reimbursement, cause inaccurate reporting of patient outcomes and the appearance of potential adverse events. This model is an effective tool for educating all healthcare professionals and patients in the identification and staging of wounds and their probable etiologies. **Wilma Wound Foot™** is also an excellent visual aid for educating those who cannot read well enough to understand basic health care information, allowing them to see what can occur without proper care. Routine cleansing and dressing changes can be taught and practiced on all the wounds by healthcare providers, patients, families and caregivers.

The model is made of flexible material permitting the toes to be moved for closer examination or the application of dressings. This unique material permits the application and removal of dressings without leaving an “adhesive residue”, when used according to supplied instructions. Each model is supplied with a positioning base for the foot which will give “hands free” access to all the sites when applying dressings or for teaching. An optional carrying case is also available.

A great tool for training, competency testing, skills assessment and dressing techniques!

The following wounds, pressure injuries and foot abnormalities are presented on **Wilma Wound Foot™**:

- Stage 1 pressure injury on the medial malleolus
- Stage 2 pressure injury on the lateral foot (behind the 5th toe)
- Stage 3 pressure injury on the heel with infection
- Stage 4 pressure injury on the lateral malleolus with exposed tendon and bone (with osteomyelitis)
- Stage 4 pressure injury on the medial foot (behind the great toe) with exposed tendon and slough
- DTPI (Deep Tissue Pressure Injury) on top of foot with “mushy/boggy” feel when palpated
- Unstageable eschar on lateral foot
- Full thickness ulcer, plantar, 1st digit, probable diabetic neuropathic etiology
- Callus under the 4th metatarsal phalangeal joint
- Amputated 2nd toe
- Dry gangrene of the 5th toe, due to ischemia
- Interdigital maceration between the 4th and 5th toe
- Partial thickness wounds between 3rd and 4th toe at 1st joint
- Corn on top of 3rd toe
- Callus at tip of 3rd toe
- Ingrown toenail on the medial aspect of the great toe
- Fungal thickened toenail on the great toe
- Blister on great toe at the first joint
- Hammer toes - 3rd, 4th and 5th toes
- Skin stapled wound



Wilma Wound Foot™

0950 Wilma Wound Foot™, lightly pigmented
12 1/2" X 8" X 3 5/8"

0955 Wilma Wound Foot™, darkly pigmented
Same as 0950, but darkly pigmented.
Ship weight 4.0 lbs/1.8kg\$520.00

0951 Optional Carrying Case
A durable, zippered, padded fabric case with carrying handles and storage pouch for supplies
Ship weight 2.0 lbs/907g\$48.00



120322

Vinnie Venous Insufficiency Leg™ – 0550

Vinnie Venous Insufficiency Leg™ is a great tool for teaching, training, competency testing and skills assessment in the care of patients with this condition. Molded from an actual patient, **Vinnie** is the most realistic venous insufficiency leg model available anywhere. The following conditions* are represented on **Vinnie Venous Insufficiency Leg™** :

- Venous Pressure Injuries
- Cellulitis
- Lipodermatosclerosis
- Calciphylaxis
- Stasis Dermatitis
- Varicose Veins
- Hemosiderin Staining
- Healed Foot Pressure Injury
- Diabetic Pressure Injury
- Vasculitis
- Pyoderma Gangrenosum
- Atrophie Blanche
- Pitting Edema
- Reticular Veins
- Telangiectasia Veins
- Maceration
- Fungal Thickened Toenails
- Individual moveable toes for compression wrapping

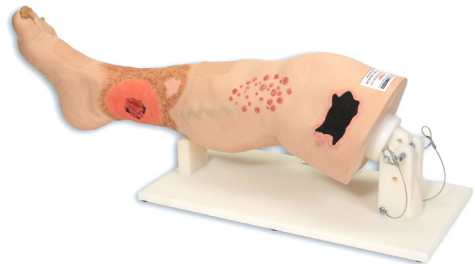
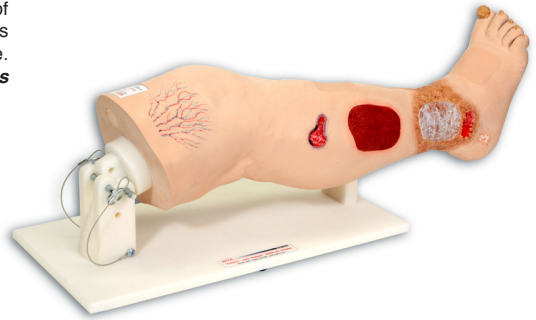
There are two areas of pitting edema on **Vinnie** – one over the tibia, which when compressed takes 2+ seconds to return and one on the dorsal foot, which when compressed takes 3+ seconds to return. This offers a unique hands-on experience for clinicians to practice and learn how to assess this condition.

Treating edema can be achieved by compression wrapping, but anecdotally, nurses appear apprehensive about the technique. It may be relatively simple but education, training and competency is essential as any bandage applied inappropriately around digits or limbs may cause trauma. **Vinnie** permits the practice of these techniques, as it has pliable individual toes which can be individually wrapped to start this process, then moving up the leg, with single or multi-layer wraps.

An **Optional Display Stand - 0552** is available which permits **Vinnie** (also used for **Annie Arterial Insufficiency Leg™ - 0555**) to pivot from above the knee, providing a realistic experience in supporting the leg while practicing compression wrapping, dressing changes, or identifying conditions. In addition the stand permits **Vinnie** to be secured in a vertical position for those times when this is beneficial for training. The top of the leg has a unique molded in swivel fixture that permits the leg to be rotated a full 360 degrees for easy visualization.



Venous Ulcer on Vinnie Leg



** Shown with Optional Display Stand - 0552, not included

Vinnie Venous Insufficiency Leg™

0550 **Vinnie Venous Insufficiency Leg™** - 28" Long
Ship weight 9.0 lbs/4.1kg **898.00**

Accessories & Parts

0552 **Optional Display Stand for Vinnie or Annie Insufficiency Leg Models**
Ship weight 4.0 lbs/1.8kg **\$114.25**

0556 **Optional Soft-Sided Carrying Case for Vinnie or Annie Insufficiency Leg Models**
Ship weight 6.0 lbs/2.7kg **\$142.00**

* Some of the conditions represented on this model may appear different on individual patients, yet still be considered the same condition. The representations of the conditions we have chosen to display are based on feedback from wound care professionals.

Annie Arterial Insufficiency Leg™ – 0555

Annie Arterial Insufficiency Leg™ - 0555 is great tool for teaching, training, competency testing and skills assessment in the care of patients with this condition. Molded from an actual patient, **Annie Arterial Insufficiency Leg™** is the most realistic arterial insufficiency leg available anywhere. The following conditions* are represented on **Annie Arterial Insufficiency Leg™**:

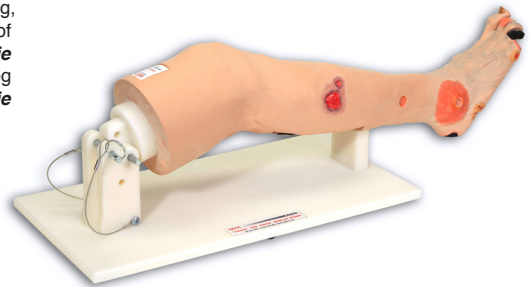
- Arterial Pressure Injuries
- Necrotic Toe
- Eschar on Heel
- Charcot Foot (shape of foot)
- Neuropathic Pressure Injury (bottom and inner side of foot)
- Cellulitis
- Fungal Thickened Toenails
- Callous
- Heel Fissures
- Mottled Skin
- Pyroderma Gangrenosum
- Amputated Toe
- Ulcer (top of toe)
- Calciphylaxis
- Hammer Toes

Annie Arterial Insufficiency Leg™ also includes a unique Arterial Doppler Sound module with individual buttons to activate the following Doppler sounds:

- Monophasic
- Biphasic
- Triphasic
- Venous

The Doppler Sound Module is neatly stored in the calf area and the individual sounds can be activated by pushing the appropriate button. The buttons are not visible from the front of the model which is beneficial when testing sound recognition. There is also an audio output jack for use with external sound systems, which can be very helpful for large group instruction.

An **Optional Display Stand - 0552** is available which permits **Annie** (also used for **Vinnie Venous Insufficiency™ Leg - 0550**) to pivot from above the knee, providing a realistic experience in supporting the legs while practicing dressing changes or identifying conditions and Doppler sounds. In addition the stand permits **Annie** to be secured in a vertical position for those times when this is beneficial for training. The top of the leg has a unique, molded-in swivel fixture that permits the leg to be rotated a full 360 degrees for easy visualization.



** Shown with Optional Display Stand - 0552, not included



Arterial Ulcer on the **Annie Leg**

* Some of the conditions represented on this model may appear different on individual patients, yet still be considered the same condition. The representations of the conditions we have chosen to display are based on feedback from wound care professionals.

Annie Arterial Insufficiency Leg™

0555 **Annie Arterial Insufficiency Leg™** - 26" Long
Ship weight 7.0 lbs/3.2kg \$840.00

Accessories & Parts

0552 **Optional Display Stand for Vinnie or Annie Insufficiency Leg Models**
Ship weight 4.0 lbs/1.8kg \$114.25

0556 **Optional Soft-Sided Carrying Case for Vinnie or Annie Insufficiency Leg Models**
Ship weight 6.0 lbs/2.7kg \$142.00

Freddie Fistula™ Skills Trainer – 0230

Freddie Fistula™ Skills Trainer was developed to provide clinicians with a model for teaching and practicing the management of abdominal fistulas. Containment of the effluent from fistulas is most commonly managed with skin protection, dressings, regulated wall suction, or negative pressure therapy. **Freddie Fistula™** permits the teaching and practicing of various dressings that can be used for drainage management and the classification of the fistula or fistulas.

Freddie Fistula™ presents a realistic feeling soft abdomen with an open abdominal wound showing exposed intestines with “gutters” on all sides, stoma and drainage tube. The abdomen includes a base with a recessed area around the perimeter that can hold 700ml of effluent as well as a rod that can be placed into a built-in fixture to hang the effluent bag or snapped into the bottom of the base when not in use. There are three separate fistulas present in the intestines:

- Stomatized Fistula
- Non-Stomatized Fistula
- Hidden Fistula – Location is not observable

Any combination of the three fistulas can be opened to permit effluent to exit the fistulas via the color coded pinch clamps. This can challenge the clinician to apply a dressing while dealing with effluent, just as you would with a real patient! The proprietary skin permits standard dressings to adhere and be easily removed. Negative pressure dressings will seal when applied.

With **Freddie Fistula™ Skills Trainer** you can use skin barriers—solid wafers, powder, paste, skin sealants, and standard dressings. **Freddie Fistula™** is a great model to teach, practice, assess competency and discuss the various standard and innovative techniques for dealing with this most challenging medical condition.



Freddie Fistula™

0230 Freddie Fistula™ Skills Trainer

Includes, soft abdomen, open abdominal wound with gutters, drainage tube, integral base, snap in place rod to hang effluent, 500ml fluid bag, quart of effluent concentrate, identification sheet, soft-sided carrying case and three fistulas - stomatized fistula, non-stomatized fistula, hidden fistula, and soft sided carrying case.

17 7/8" X 16" X 5" (45.5cm X 40.6cm X 12.7cm)

Ship weight 15 lbs/6.8kg \$852.00

Accessories & Parts

0232 Stain Resistant Effluent Concentrate - 1 Quart

Ship weight 1.0 lb /907g \$14.25

0233 Stain Resistant Effluent Concentrate - 1 Gallon

Ship weight 2.0 lb /907g \$27.25

0234 3-Way Color-Coded Tubing Set with Pinch Clamps

Ship weight 1.0 lb /907g \$38.75

0235 Plastic Support Rod

Ship weight 1.0 lb /907g \$43.00

0611 500 ml Fluid Bag with Cap and Holder

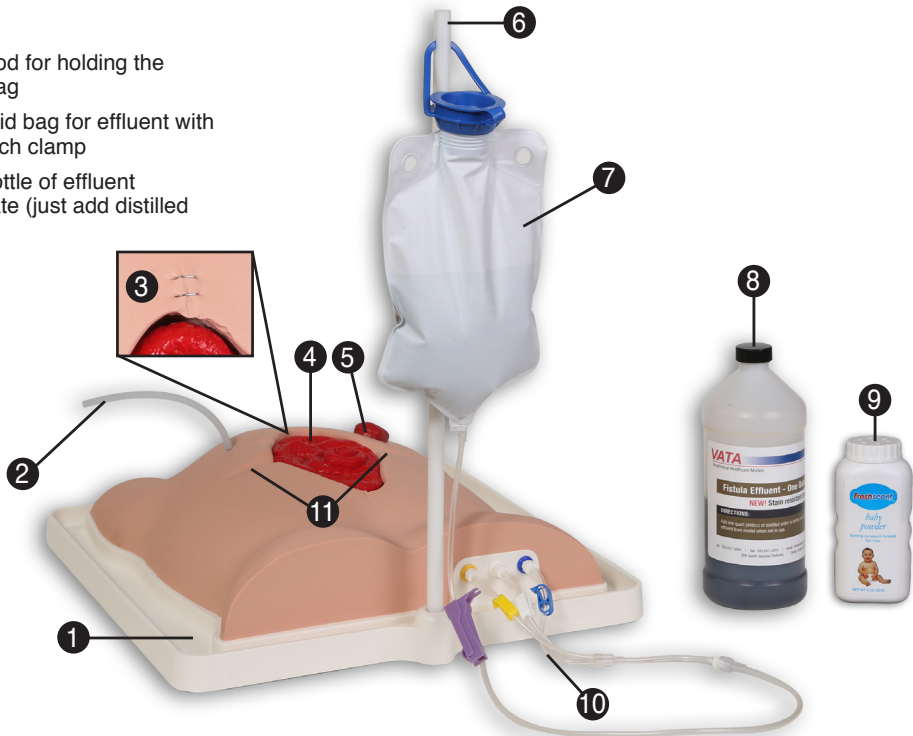
Ship weight 1.0 lb /907g \$23.25

120322

Freddie Fistula™ Skills Trainer – 0230

Freddie Product Components

- ① Effluent catch tray with skin
- ② Drain tube
- ③ Surgical staples
- ④ Fistulas (three orifices for effluent to flow)
- ⑤ Stoma
- ⑥ Support rod for holding the effluent bag
- ⑦ 500 ml fluid bag for effluent with rolling pinch clamp
- ⑧ 1 quart bottle of effluent concentrate (just add distilled water)
- ⑨ Baby powder
- ⑩ 3-way tube set with color-coded blue, white, & yellow pinch clamps
- ⑪ Skin fold creases



Carrying Case Included:

Soft-sided fabric case with zipper closure, supply pouch, shoulder strap and handle.

Seymour II™ Wound Care Model – 0910/0920

Seymour II™ is made with a flexible, life-like material that permits the application and easy removal of dressings, without leaving an adhesive residue. Still the most comprehensive model of its kind, molded from a 74-year-old patient, looks and feels like the real thing. Displaying the following pressure injuries* (NPUAP 2016 – National Pressure Ulcer Advisory Panel): Stage 1, Stage 2, Stage 3 with subcutaneous fat, undermining, tunneling, slough and granulation tissue, a deep Stage 4 with eschar, subcutaneous fat, undermining, tunneling, slough and exposed bone (with osteomyelitis). Also shown are a DTPI (Deep Tissue Pressure Injury), unstageable full eschar/slough wound, and a 5 1/2" dehisced wound. The Stage 4 and Stage 3 pressure injuries are positioned so that a "bridging" dressing for use with a vacuum assisted closure and negative pressure wound therapy devices can be demonstrated and practiced. Wound assessment has become critical to the operation of health agencies, as inaccurate wound assessment can affect reimbursement, cause inaccurate reporting of patient outcomes and the appearance of potential adverse events. The **Seymour II™** model makes it possible to visualize and understand the differences in wounds. Once the different etiologies are understood, you can discuss and devise treatment plans that will deliver optimized patient care. Great care has been taken to color each wound just as you would see it on a patient. You are able to demonstrate and practice wound cleansing, classification, staging, and assessment, as well as the measurement of wound length, depth, undermining, and tunneling. The positioning of the wounds permits multiple dressings to be demonstrated at the same time.

A great tool for training, competency testing, skills assessment, dressing techniques and negative wound therapy devices!



0920



0910

Seymour II™ Wound Care Model

0910 Seymour II™ Wound Care Model, lightly pigmented
12" x 13 1/2" x 6"

0920 Seymour II™ Wound Care Model, darkly pigmented

Same as 0910, but darkly pigmented.

Ship weight 6.0 lbs/2.7kg.\$568.00

Accessories & Parts

0901 Optional Carrying Case

Custom durable, zippered, padded case with carrying handles, shoulder strap and pockets in the top lid to store supplies.

Ship weight 4.0 lbs/1.8kg. \$92.00



120322