

**63% Growth Increase.
On *HALF* the *WATER*.**



**Turbo Power for Large-Scale
Irrigation Systems**



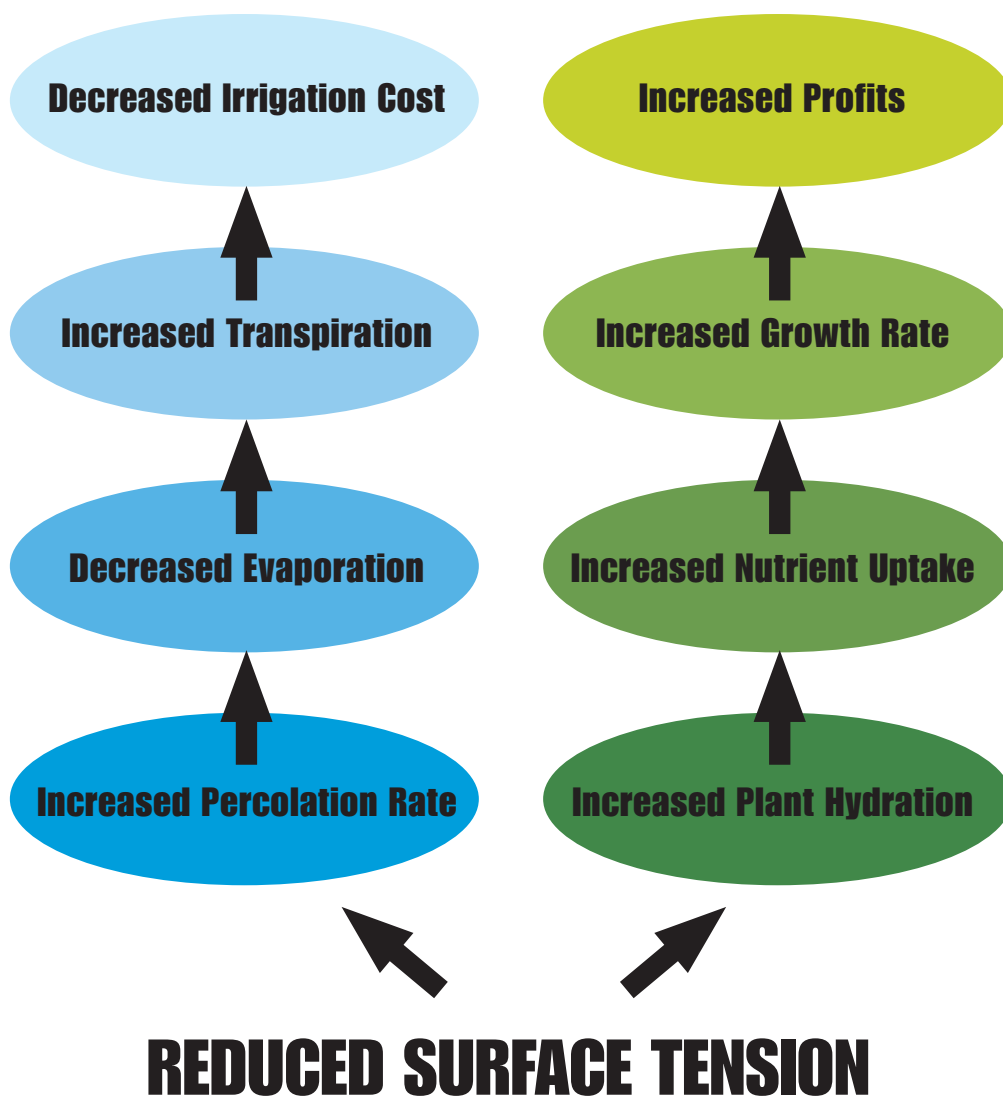
How it Works

Rainmaker™ uses rare earth minerals and quartz compression to produce radiant energy frequencies that effectively reduce the surface tension and cluster size of water. This accelerates waters' ability to penetrate and extract nutrients from soil so it can carry these nutrients to plant tissues.



Water treated in this way has the following properties:

The Rainmaker™ addresses what is quickly becoming the most limiting factor in agriculture. No water? No plants.



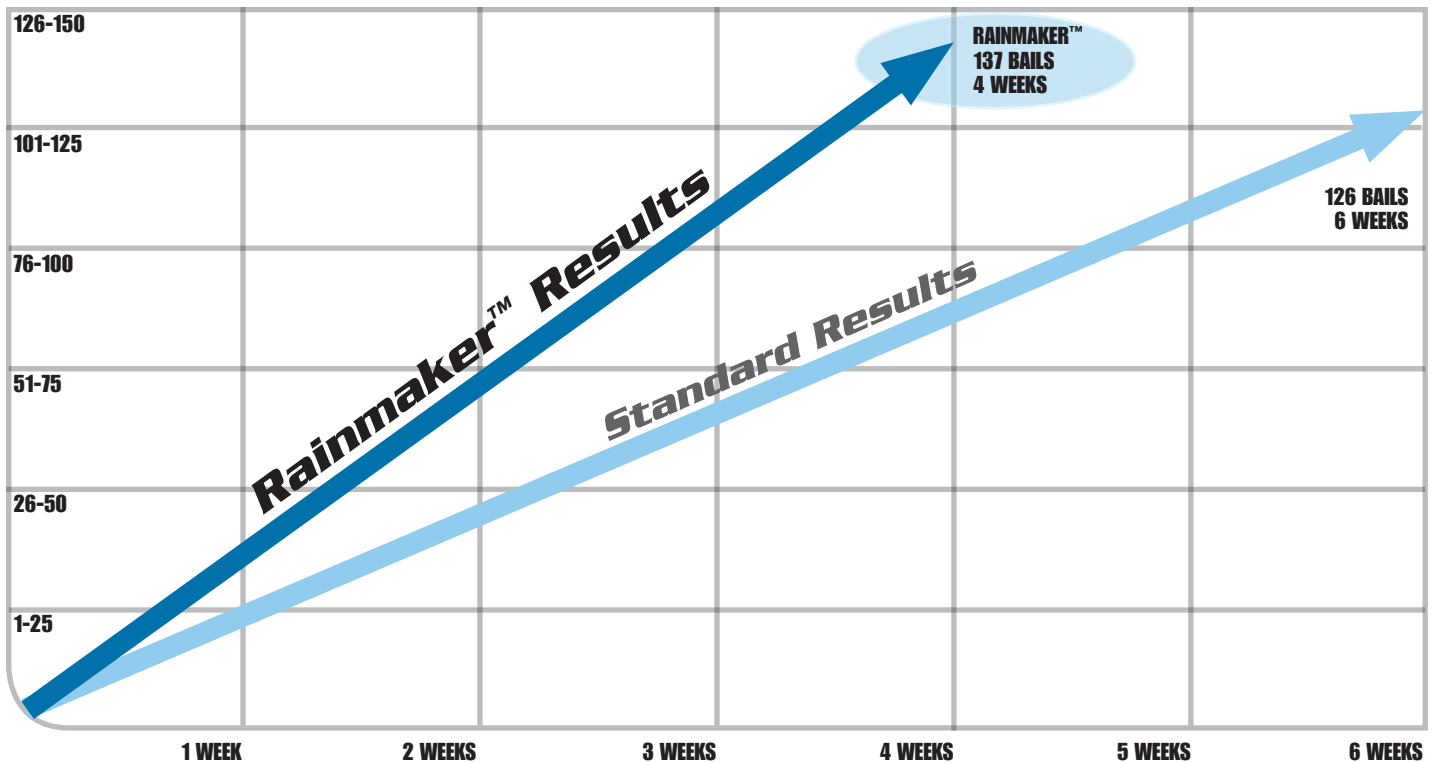


This Alfalfa Farm pivot in Pritchett, Colorado received the first Rainmaker™. Visible results in just one months time.



**AUGUST 1, 2013, PRIOR TO RAINMAKER™ INSTALLATION
AFTER 2ND CUTTING
3.8 BAILS PER DAY**

**SEPTEMBER 1, 2013, ONE MONTH OF RAINMAKER™ INSTALLATION
AFTER 3RD CUTTING
4.5 BAILS PER DAY**





"The technique that only uses explosion or expansion forces is lethal and hostile to nature. This kind of technique must miss the natural counter force or the organic synthesis which is a negative room of quality -The Organic Vacuum - that reunites the polar and the increasing to the favor of the uprising of a new life form..."

~ Viktor Schauberger



'Large-Scale' Means Making a Big Difference

Economies of scale haven't always translated well in agriculture. Costs have often risen faster than revenue. Yet after installing Rainmaker™ units our farming customers are seeing crops growing faster, major increases in nutrient value, and a reduction in water consumption as high as 50%.

Lower Water Consumption

One remarkable effect of the Rainmaker™ process is the substantial reduction in water use. This is not suggested, but mandatory, otherwise there is a risk of over-watering. Smaller water cluster sizes and lower surface tension means substantially higher concentrations of nutrients soluble in the water, and easier/faster cellular uptake.



Piezo electric water ionization module.



Herbicide resistant alfalfa field produced average yields.

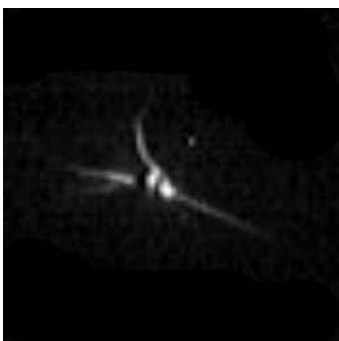


The Rainmaker™, the first device of its kind engineered to go directly in-line to power up the water that feeds your pivot, like a turbocharger.

Overcome ‘Sins’ of Contemporary Water Treatment

Water’s value in virtually every area of modern life is clear. Therefore, water’s vital role in the quality and health of farming cannot be understated. Farming as we know it, not only depends on water, it exists because of it.

An important, but rarely examined fact is that while delivered water may have passed various safety standards with respect to treatment guidelines, it is often inadequate with respect to producing optimal, healthy crops.



Low Energy Water Drop



Rainmaker™ Module engineered for 6”, 8”, or 10” lines.



High Energy Water Drop

These images show the comparative value of water in terms of energy, qualities that would not be apparent in a TDS analysis. We now know that healthy energy means higher nutrient solubility and subsequent uptake, with lower actual consumption.

Natural Principles

The Rainmaker™ follows principles and laws first observed and confirmed by Austrian naturalist, Viktor Schaubberger, who presented the radical idea that, just like a succulent fruit, water has its own “season” and “ripeness” state. Water that was not “ripe,” was hungry. Instead of giving energy, it took, like a hungry adolescent.

Today we observe evidence of hungry water in calcium build-up “scaling”, corrosion, and inefficient absorption.

The major consequence is that more water is used, while producing sub-standard quality crops. Irrespective of the water source or quality, the Rainmaker™ will restore Nature’s magical qualities.

Affecting the Energy of Water

In the past 20 years, new ways have emerged to analyze water’s health and predict its behavior. Through electrophotonic imaging technology developed in Russia, energy emissions, in the form of very faint bio-photons, can be captured and analyzed for balance and coherence. (images above)



~ Viktor Schaubberger
1885-1958



Experience is the best evidence of a great agricultural program. The pivot systems 3000 feet below show the value of high-spin water and a world class soil biology program. The difference in yields in the fields below average 75 bails per acre higher than adjoining fields.



History Maker!

We are confident that Rainmaker technology can be a real paradigm changer, because it puts health back into the water, which helps the water deliver life back to food. All at reduced cost.

The Evidence!

Take a look at what we've observed this far.



- Yielded a 192 Relative Feed Value (RFV) from herbicide resistant seed stock. This is unprecedented.
- 25.8% Protein Content
- Cut back water by more than 50%!
- No pesticide or herbicides needed

What a difference a Rainmaker™ makes.



Soil compaction is a thing of the past now.



Appendix - Report Related Images

Servi-Tech/DodgeCity 8/6/2013 8:20:41 AM PAGE 2/003 Fax Server



Servi-Tech Laboratories

1816 E. Wyatt Earp • PO Box 1397 • Dodge City, KS 67801
www.servitechlabs.com

Phone: 620.227.7123
800.557.7509
Fax: 620.227.2047

Lab No.: 32015		FEED ANALYSIS REPORT	Date Reported: 08/05/2013
Send To: 30200	COLORADO STATE UNIVERSITY VETERINARY DIAGNOSTIC LAB PO BOX 900 ROCKY FORD, CO 81067-0900		
Results For: Feedstuff Description: Sample Identification: Date Received:	WALTER DOKE ALFALFA SILAGE R1306394 08/02/2013		 Randy Royle Laboratory Manager
Invoice No.:	478824		
Feed Analysis Results			
	As Received	100% Dry Matter	
Moisture, %	73.0		
Dry Matter, %	27.0		
Crude Protein, %	7.0	25.8	
Acid Detergent Fiber, % ADF	7.4	27.3	
Neutral Detergent Fiber, % NDF	8.8	32.7	
Total Digestible Nutrients, % TDN	18.8	69.6	
Net Energy, Maint, Mcal/lb	0.20	0.74	
Net Energy, Gain, Mcal/lb	0.12	0.46	
Net Energy, Lact, Mcal/lb	0.19	0.72	
Digestible Energy, Mcal/lb	0.38	1.39	
Met. Energy, Beef, Mcal/lb	0.31	1.14	
Relative Feed Value, (RFV)		192	
Calcium, % Ca	0.44	1.64	
Phosphorus, % P	0.10	0.38	
RELATIVE FEED VALUE: Formula used: $RFV = (DDM \times DMI) / 1.29$ $DDM = 88.9 - (0.779 \times \%ADF)$ $DMI = 120 / \%NDF$			
Reference hay of 100 RFV has 41% ADF and 53% NDF. Based on system used by Wisconsin, Minnesota, and National Hay Association.			
Servi-Tech Laboratories has been certified annually by the National Forage Testing Association since 1986.			
USDA ALFALFA - ALFALFA/MIX HAY TESTING GUIDELINES			
QUALITY	CP	ADF	NDF
Supreme	> 22	< 27	< 34
Premium	20-22	27-29	34-36
Good	18-20	29-32*	36-40
Fair	16-18	32-35	40-44
Utility	< 16	> 35	> 44
			RFV
			> 185
			170-185
			150-170
			130-150
			< 130