



**UNAPOLOGETIC
UNFILTERED
UNCOMPROMISING**

Weightless and fast-absorbing, this deliciously scented face oil harnesses nature's most nutrient dense magical ingredients to hydrate, brighten and bring out that "I can conquer the world" glow.

CBD is a deeply penetrating anti-inflammatory powerhouse: an antioxidant more potent than Vitamin C, E or A, it regenerates, fights free radicals and rebalances to ward off both wrinkles and acne.

KEY BOTANICALS

- ◆ CBD: rejuvenates
- ◆ Rosehip: brightens
- ◆ Argan: hydrates
- ◆ Moringa: detoxifies
- ◆ Jojoba: unclogs pores
- ◆ Vitamin E: strengthens
- ◆ Camellia: firms
- ◆ Squalane: protects

un-definedbeauty.com

undefinedbeauty.co

UNDEFINED, INC
SAN FRANCISCO, CA 94103
PLEASE RECYCLE



I LIKE MY
SKINCARE
HOW I LIKE
MY PEOPLE:
NON-TOXIC

CRUELTY FREE

◆ **VEGAN**

◆ **ECO-FRIENDLY**

◆ **SUSTAINABLY
SOURCED**

◆ **NO BS**

Use day and night
to lock-in moisture,
patting into skin
for best absorption

**UNDEFINED
BEAUTY**

**INDIGO ROSE
GLOW
ELIXIR**

CBD Beauty Oil

30mL | 1 fl oz

**HYDRATING
◆
BRIGHTENING
◆
BALANCING**

NO Parabens
Silicones
Sulfates
Palm Oil
Phthalates
Artificial Dyes
Synthetic Fragrances
Triolein and Triclosan
Mineral Oil or Petroleum

INGREDIENTS:
Glycine Soja (Soybean) Oil,
Caprylic/Capric Triglyceride, Carthamus
Tinctarius (Safflower) Seed Oil, Vitis
Vinifera (Grape) Seed Oil, Simmondsia
Chinensis (Jojoba) Seed Oil, Tocopheryl
Acetate (Vitamin E), Melia Azadirachta
(Neem) Extract, Argania (Argan) Spinosa
Kernel Oil, Olea Europaea (Olive) Fruit
Oil, Prunus Amygdalus Dulcis (Sweet
Almond) Oil, Rosa Moschata (Rosehip)
Seed Oil, PCR Hemp (CBD), Moringa
Oleifera Seed Oil, Eclipta Prostrata
(Frisco Daisy) Extract, Camellia Oleifera
Seed Oil, Squalane, Natural Fragrance
*From sugarcane

Size: 1.18" x 5.125" x 1.18"

COLOR USED:

PMS 533 C

PMS 514 C

HOLOGRAPHIC AREA

OUTSIDE

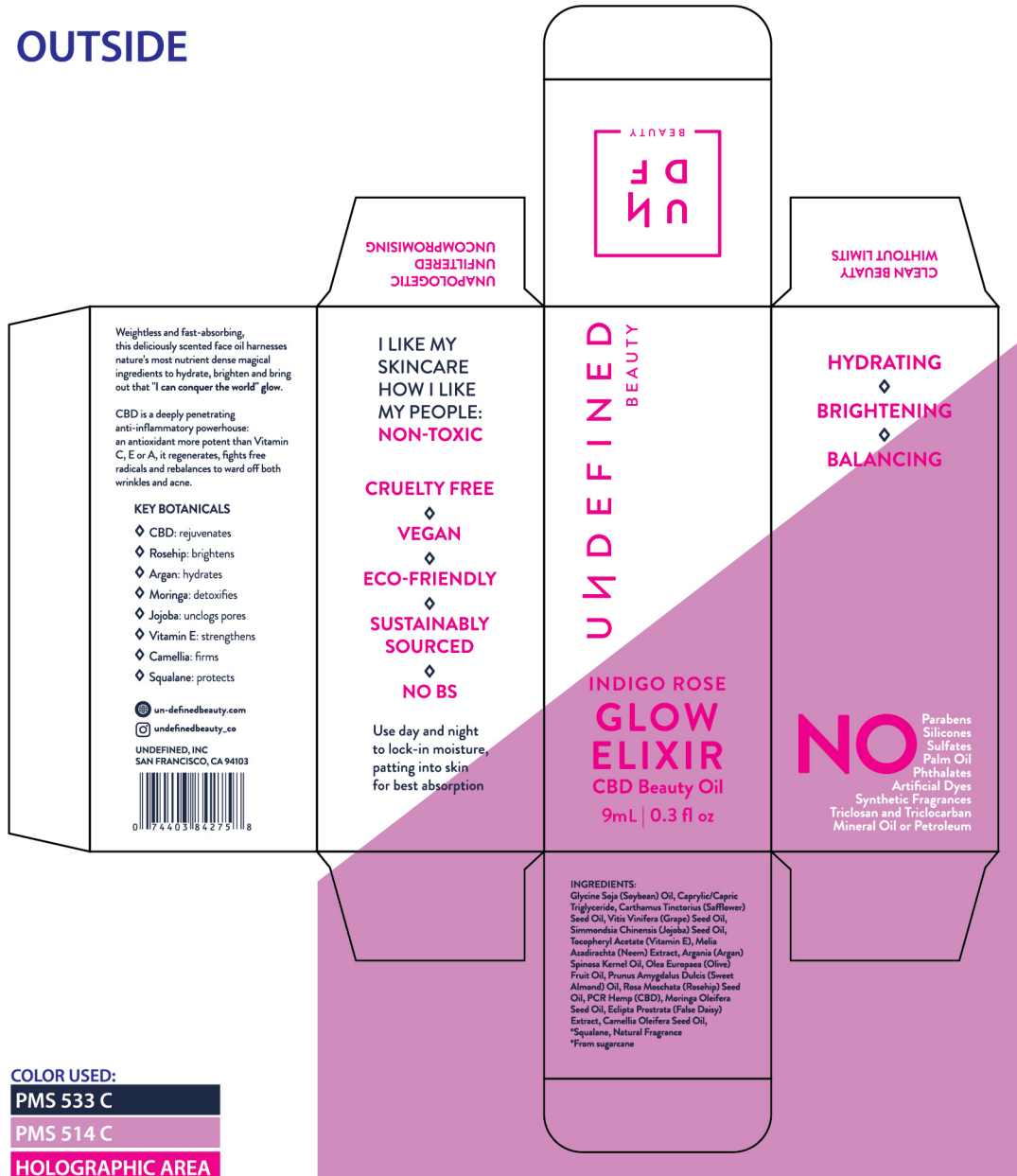


INSIDE

BLACK

COLOR USED:

OUTSIDE



COLOR USED:
PMS 533 C
PMS 514 C
HOLOGRAPHIC AREA

Size: 1.25" W x 3" H x 1.25" D



INSIDE

**BLACK
COLOR USED:**