



ANGLE TOOL WORKS INC.

Welcome

Angle Tool Works
Home
Contacts
Directions

Angle Tool Works
Thermoform
Tooling
All Types

Angle Tool Works
Thermoform
Product Development
Services

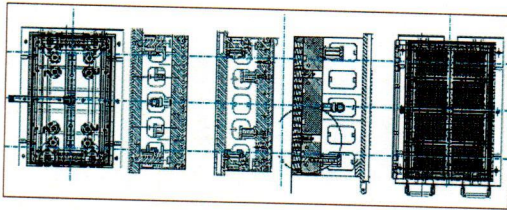
Angle Tool Works
Compression Molds
Injection Molds,
Blowmold Tooling

ENGITECS
Latin America
Sales & Services
and more

Global
Partners
dexterMT
Europe

**Welcome to Angle Tool Works.
We manufacture state of the art
tooling for the Plastics Industry.
Thank you for viewing our web site.**

**Combining Quality Craftmanship and Innovation
together with Experience and Knowledge
to deliver state of the art tooling
Since 1961**



ISO 9001:2015 CERTIFIED by



[View Angle® Certificate](#)

"Building Quality Tooling for the Plastic's Industry since 1961"

ANGLE® is a Registered Trademark of Angle Tool Works Inc.
© Copyright 2018 Angle Tool Works Inc.
also known by many customers as Angle Tool Co.

Today's Date: Wednesday, February 06, 2019
Page Last Updated 09/11/2018



ANGLE TOOL WORKS INC.

About Us

Angle Tool Works
Home
Contacts
Directions

Angle Tool Works
Thermoform
Tooling
All Types

Angle Tool Works
Thermoform
Product Development
Services

Angle Tool Works
Compression Molds
Injection Molds,
Blowmold Tooling

ENGITECS
Latin America
Sales & Services
and more

Global
Partners
dexterMT
Europe

Angle was founded in 1961,
Designing and building Thermoform Tooling.
Today, Angle Tool Works is a leader in the Design and Building of
Thermoform Tooling, along with other types of molds for the
plastics industry. Angle Tool Works delivers quality tooling to
North America, Latin America and Europe.



ISO 9001:2015 CERTIFIED by



[View Angle® Certificate](#)

"Building Quality Tooling for the Plastic's Industry since 1961"

ANGLE® is a Registered Trademark of Angle Tool Works Inc.
© Copyright 2018 Angle Tool Works Inc.
also known by many customers as Angle Tool Co.

Today's Date: Wednesday, February 06, 2019
Page Last Updated 04/21/2018

ANGLE[®] ANGLE TOOL WORKS INC.

Product Development Services

Angle Tool Works
Home
Contacts
Directions

Angle Tool Works
Thermoform
Tooling
All Types

Angle Tool Works
Thermoform
Product Development
Services

Angle Tool Works
Compression Molds
Injection Molds,
Blowmold Tooling

ENGITECS
Latin America
Sales & Services
and more

Global
Partners
dexterMT
Europe

We assist our customers by providing product development services.

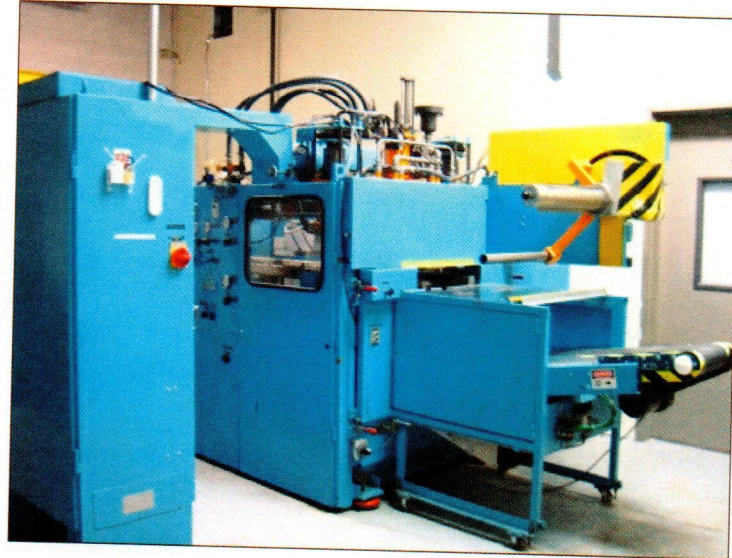
- Product design assistance
- Determine product specifications
- Get your product to market sooner
- Reduce production interruptions for product sampling

Our Product Development Department is ISO Certified to produce Thermoform Products for Food Packaging.

ISO 22002-4:2013 Certified by
[Jaeger and Holland Auditors](#)

Click to view
[GMP Certification](#)
Good Manufacturing Practices for Thermoformed Products

Click to view
[ISO 22002-4 Certification](#)
Thermoforming Packaging for Food Use



- **Product Development Services:**
 - Product Design
 - Product Sampling
- **Sampling Machines:**
 - ILLIG 50K Thermoformer
 - AAA Cut Sheet Thermoformer
- **Complete Design and Engineering Services:**
 - Siemens Unigraphics NX
 - CAD Solid Model Mold Design
 - CAD Solid Model Product Design
 - Auto Cad DXF and IGES translations
- **Our Product Sampling experience includes:**
 - Medical and Food Packaging
 - Industrial Packaging
 - Plastic Cup and Lids
 - Signs and Displays
 - Furniture, Lawn and Garden Products
 - Automotive Products
 - Agricultural Products
- **Our Sampling experience includes:**
 - Oriented Polystyrene
 - Polypropylene
 - High Density Polyethylene
 - APET
 - Multi-layer co-extruded material combinations
 - PLA
 - and other Materials



ANGLE TOOL WORKS INC.

Large Flat Bed Thermoform Molds and Trim Tooling

<p>Angle Tool Works Home Contacts Directions</p>	<p>Angle Tool Works Thermoform Tooling All Types</p>	<p>Angle Tool Works Thermoform Product Development Services</p>	<p>Angle Tool Works Compression Molds Injection Molds, Blowmold Tooling</p>	<p>ENGITECS Latin America Sales & Services and more</p>	<p>Global Partners dexterMT Europe</p>
---------------------------------------------------------	-------------------------------------------------------------	------------------------------------------------------------------------	------------------------------------------------------------------------------------	--------------------------------------------------------------------	-----------------------------------------------

We Design, Build, Modify and Repair Large Flat Bed Thermoform Molds and Trim Tooling for all your major machine manufacturers:

- o Kiefel - Illig - Gabler - TSL
- o OMV - GN - Brown
- o Irwin - Lyle - Sencorp - ZED

Product Development Services:

- o Product Design
- o Product Sampling

Complete Design and Engineering Services:

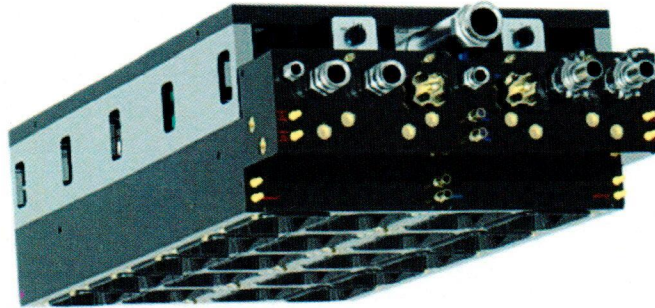
- o Siemens Unigraphics NX
- o CAD Solid Model Mold Design
- o CAD Solid Model Product Design
- o Auto Cad DXF

Our mold building experience includes products for:

- o Medical and Food Packaging
- o Industrial Packaging
- o Plastic Cup and Lids
- o Signs and Displays
- o Furniture, Lawn and Garden Products
- o Automotive Products
- o Agricultural Products

Our mold building includes experience with:

- o Oriented Polystyrene
- o Polypropylene
- o High Density Polyethylene
- o EPS Foam
- o CPET
- o APET
- o PVC
- o Multi-layer co-extruded material combinations



"Building Quality Tooling for the Plastic's Industry since 1961"

ANGLE® is a Registered Trademark of Angle Tool Works Inc.
 © Copyright 2018 Angle Tool Works Inc.
 also known by many customers as Angle Tool Co.

Today's Date: Wednesday, February 06, 2019
 Page Last Updated 04/15/2018



ANGLE TOOL WORKS INC.

Thermoform Small Format Molds and Trim Tooling

<p>Angle Tool Works Home Contacts Directions</p>	<p>Angle Tool Works Thermoform Tooling All Types</p>	<p>Angle Tool Works Thermoform Product Development Services</p>	<p>Angle Tool Works Compression Molds Injection Molds, Blowmold Tooling</p>	<p>ENGITECS Latin America Sales & Services and more</p>	<p>Global Partners dexterMT Europe</p>
--------------------------------------------------------------	------------------------------------------------------------------	-----------------------------------------------------------------------------	-----------------------------------------------------------------------------------------	-------------------------------------------------------------------------	----------------------------------------------------

- **We Design, Build, Modify and Repair Thermoform Small Format Molds and Trim Tooling for all your major machine manufacturers:**
We also Design, Build and Service Form-Fill-Seal Tooling

- Illig RDK 80, RDKP 72, RV 53, RV 74, FS 48
- Kiefel Tech KMD 75, 75, 85, 90
- Gabler - TSL
- OMV - GN - Brown
- Irwin - Lyle - Sencorp - ZED

- **Product Development Services:**

- Product Design
- Product Sampling

- **Complete Design and Engineering Services:**

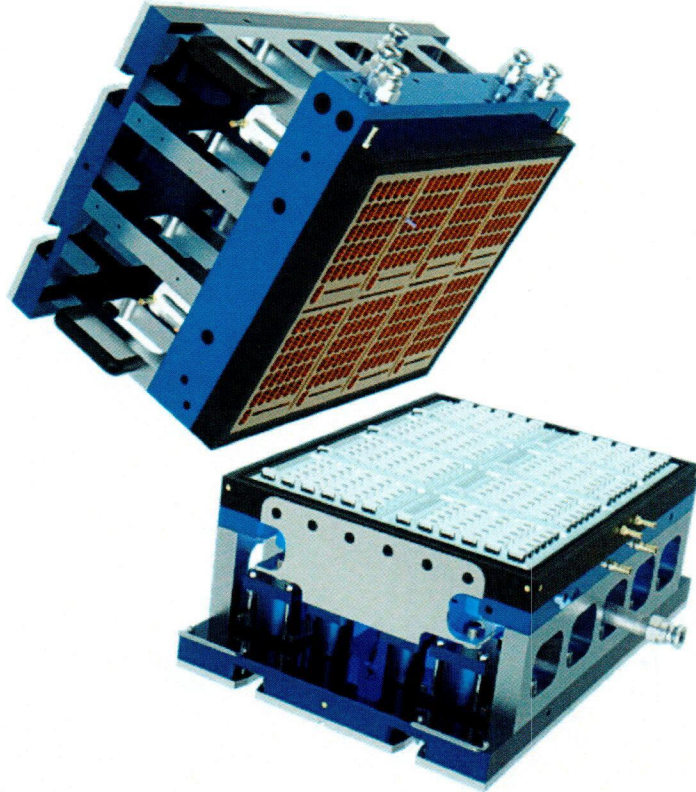
- Siemens Unigraphics NX
- CAD Solid Model Mold Design
- CAD Solid Model Product Design
- Auto Cad DXF

- **Our mold building experience includes products for:**

- Medical and Food Packaging
- Industrial Packaging
- Plastic Cup and Lids
- Signs and Displays
- Furniture, Lawn and Garden Products
- Automotive Products
- Agricultural Products

- **Our mold building includes experience with:**

- Oriented Polystyrene
- Polypropylene
- High Density Polyethylene
- EPS Foam
- CPET
- APET
- PVC
- Multi-layer co-extruded material combinations



"Building Quality Tooling for the Plastic's Industry since 1961"

ANGLE® is a Registered Trademark of Angle Tool Works Inc.
© Copyright 2018 Angle Tool Works Inc.
also known by many customers as Angle Tool Co.

Today's Date: Wednesday, February 06, 2019
Page Last Updated 04/15/2018



ANGLE TOOL WORKS INC.

Thermoform Third Motion Form Tooling

Angle Tool Works Home Contacts Directions	Angle Tool Works Thermoform Tooling All Types	Angle Tool Works Thermoform Product Development Services	Angle Tool Works Compression Molds Injection Molds, Blowmold Tooling	ENGITECS Latin America Sales & Services and more	Global Partners dexterMT Europe
----------------------------------------------------	--------------------------------------------------------	-------------------------------------------------------------------	-------------------------------------------------------------------------------	-----------------------------------------------------------	------------------------------------------

We Design, Build, Modify and Repair Thermoform Third Motion Tooling for all your major machine manufacturers:

- o Kiefel - Illig - Gabler - TSL
- o OMV - GN - Brown
- o Irwin - Lyle - Sencorp - ZED

Product Development Services:

- o Product Design
- o Product Sampling

Complete Design and Engineering Services:

- o Siemens Unigraphics NX
- o CAD Solid Model Mold Design
- o CAD Solid Model Product Design
- o Auto Cad DXF

Our mold building experience includes products for:

- o Medical and Food Packaging
- o Industrial Packaging
- o Plastic Cup and Lids
- o Signs and Displays
- o Furniture, Lawn and Garden Products
- o Automotive Products
- o Agricultural Products

Our mold building includes experience with:

- o Oriented Polystyrene
- o Polypropylene
- o High Density Polyethylene
- o EPS Foam
- o CPET
- o APET
- o PVC
- o Multi-layer co-extruded material combinations



"Building Quality Tooling for the Plastic's Industry since 1961"

ANGLE® is a Registered Trademark of Angle Tool Works Inc.
 © Copyright 2018 Angle Tool Works Inc.
 also known by many customers as Angle Tool Co.

Today's Date: Wednesday, February 06, 2019
 Page Last Updated 04/15/2018

ANGLE[®] ANGLE TOOL WORKS INC.

Thermoform Inline and Post Trim Tooling

Angle Tool Works
Home
Contacts
Directions

Angle Tool Works
Thermoform
Tooling
All Types

Angle Tool Works
Thermoform
Product Development
Services

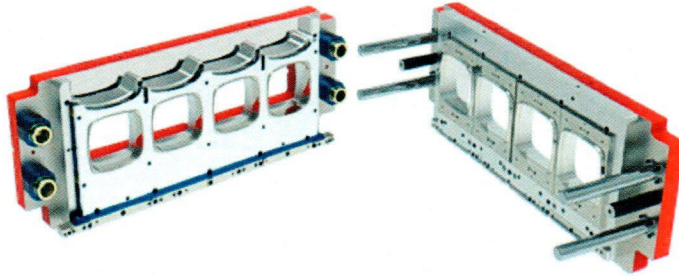
Angle Tool Works
Compression Molds
Injection Molds,
Blowmold Tooling

ENGITECS
Latin America
Sales & Services
and more

Global
Partners
dexterMT
Europe

- **We Design, Build, Modify and Repair Thermoform Inline and Post Trim Tooling for all your major machine manufacturers: Single Row Trim Tooling, Double Row Trim Tooling, Pre-punch Trim Tooling**

- Kiefel - Illig - Gabler - TSL
- OMV - GN - Brown
- Irwin - Lyle - Sencorp - ZED



- **Complete Trim Tooling for all Types:**

- Hardened punch and die tooling
- Steel rule knives and stations
- Forged knives
- Pre-punch tooling

- **Complete Design and Engineering Services:**

- Siemens Unigraphics NX
- CAD Solid Model Mold Design
- CAD Solid Model Product Design
- Auto Cad DXF and IGES translations

- **Complete Trim Tool Building Services:**

- CNC Contour Jig Grinding

- **Our trim tooling experience includes products for:**

- Medical and Food Packaging
- Industrial Packaging
- Plastic Cup and Lids
- Signs and Displays
- Furniture, Lawn and Garden Products
- Automotive Products
- Agricultural Products

- **Our experience in trimming:**

- Oriented Polystyrene
- Polypropylene
- High Density Polyethylene
- EPS Foam
- CPET
- APET
- PVC
- Multi-layer co-extruded material combinations

"Building Quality Tooling for the Plastic's Industry since 1961"

ANGLE[®] is a Registered Trademark of Angle Tool Works Inc.
© Copyright 2018 Angle Tool Works Inc.
also known by many customers as Angle Tool Co.

ANGLE[®] ANGLE TOOL WORKS INC.

Thermoform Cut Knife Trim Tooling

Angle Tool Works
Home
Contacts
Directions

Angle Tool Works
Thermoform
Tooling
All Types

Angle Tool Works
Thermoform
Product Development
Services

Angle Tool Works
Compression Molds
Injection Molds,
Blowmold Tooling

ENGITECS
Latin America
Sales & Services
and more

Global
Partners
dexterMT
Europe

- **We Design, Build, Modify and Repair Cut Knife Trim Tooling for all your major machine manufacturers:**

- Kiefel - Illig - Gabler - TSL
- OMV - GN - Brown
- Irwin - Lyle - Sencorp - ZED

- **Complete Trim Tooling for all Types:**

- Machine Steel Cut Knives - Precision Ground Cut Edges
- Hardened punch and die tooling
- Steel rule knife stations
- Floating and Fixed Position cut knife stations
- Forged knives
- Pre-punch tooling

- **Complete Design and Engineering Services:**

- Siemens Unigraphics NX
- CAD Solid Model Mold Design
- CAD Solid Model Product Design
- Auto Cad DXF and IGES translations

- **Complete Trim Tool Building Services:**

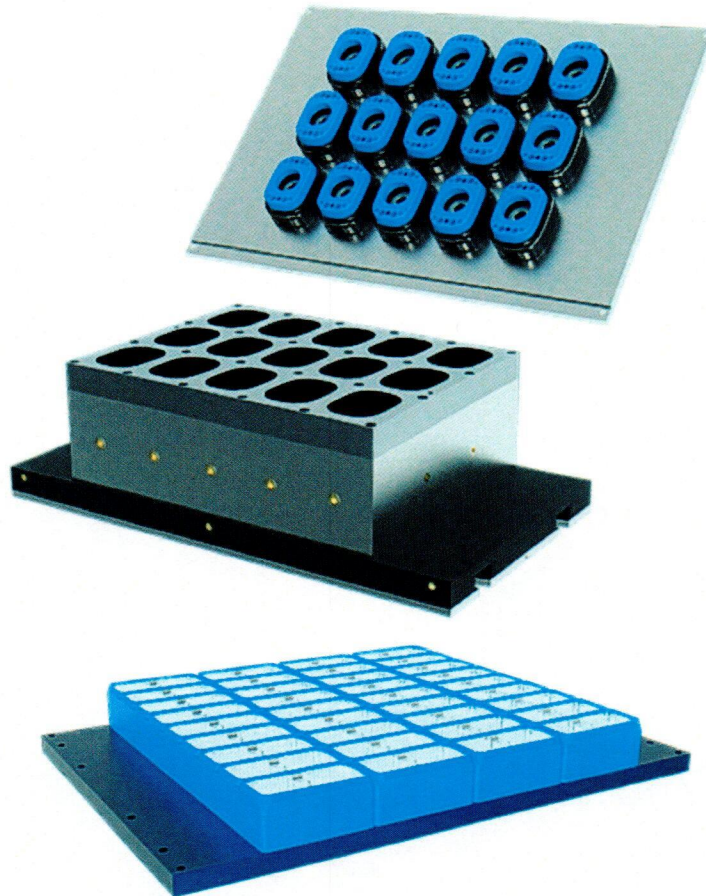
- CNC Contour Jig Grinding

- **Our trim tooling experience includes products for:**

- Medical and Food Packaging
- Industrial Packaging
- Plastic Cup and Lids
- Signs and Displays
- Furniture, Lawn and Garden Products
- Automotive Products
- Agricultural Products

- **Our experience in trimming:**

- Oriented Polystyrene
- Polypropylene
- High Density Polyethylene
- EPS Foam
- CPET
- APET
- PVC
- Multi-layer co-extruded material combinations



"Building Quality Tooling for the Plastic's Industry since 1961"

ANGLE[®] is a Registered Trademark of Angle Tool Works Inc.
© Copyright 2018 Angle Tool Works Inc.
also known by many customers as Angle Tool Co.

Today's Date: Wednesday, February 06, 2019
Page Last Updated 04/15/2018



ANGLE TOOL WORKS INC.

Design and Manufacturing of Composite Molds

Angle Tool Works
Home
Contacts
Directions

Angle Tool Works
Thermoform
Tooling
All Types

Angle Tool Works
Thermoform
Product Development
Services

Angle Tool Works
Compression Molds
Injection Molds,
Blowmold Tooling

ENGITECS
Latin America
Sales & Services
and more

Global
Partners
dexterMT
Europe

- **Complete Design and Engineering Services:**

- Siemens Unigraphics NX
- CAD Solid Model Mold Design
- CAD Solid Model Product Design
- Auto Cad DXF

- **Expertise in Composite Mold Building Includes:**

- Retractable Mold Core Sections
- Break A-Way and sliding mold sections
- Insert Molding
- De-molding and Knock-out Technology
- Product Take-Out Technology

- **Complete Mold Services, Specializing in:**

- New Composite Molds
- Repair of Existing Composite Molds
- Modification of Existing Composite Molds

- **Our Composite mold building experience includes expertise of the following product groups :**

- Industrial Components and structures
- Automotive
- Lawn and Garden

"Building Quality Tooling for the Plastic's Industry since 1961"

ANGLE® is a Registered Trademark of Angle Tool Works Inc.
© Copyright 2018 Angle Tool Works Inc.
also known by many customers as Angle Tool Co.

Today's Date: Wednesday, February 06, 2019
Page Last Updated 04/15/2018

ANGLE[®] ANGLE TOOL WORKS INC.

Design and Manufacturing of Compression Molds

Angle Tool Works
Home
Contacts
Directions

Angle Tool Works
Thermoform
Tooling
All Types

Angle Tool Works
Thermoform
Product Development
Services

Angle Tool Works
Compression Molds
Injection Molds,
Blowmold Tooling

ENGITECS
Latin America
Sales & Services
and more

Global
Partners
dexterMT
Europe

• **Complete Design and Engineering Services:**

- Siemens Unigraphics NX
- CAD Solid Model Mold Design
- CAD Solid Model Product Design
- Auto Cad DXF

• **Expertise in Mold Building Includes:**

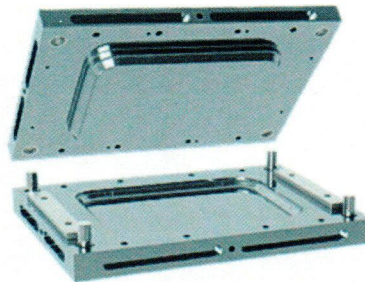
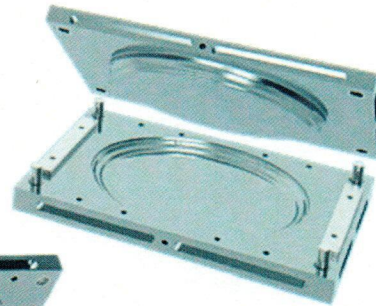
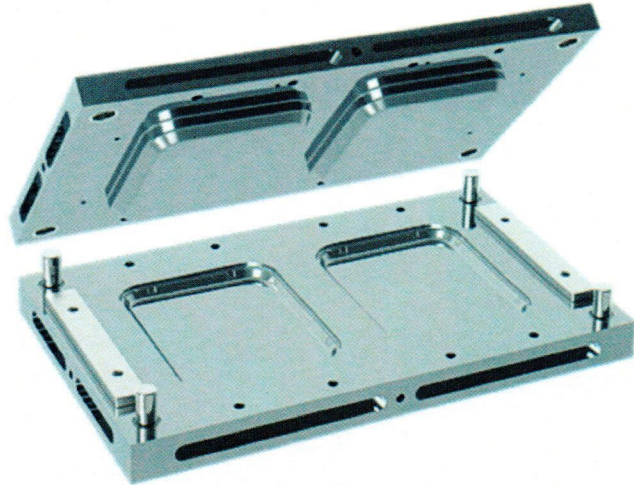
- Retractable Mold Core Sections
- Break A-Way and sliding mold sections
- Insert Molding
- De-molding and Knock-out Technology
- Product Take-Out Technology

• **Complete Mold Services, Specializing in:**

- New Compression Molds
- Repair of Existing Compression Molds
- Modification of Existing Compression Molds

• **Our compression mold building experience includes expertise of the following product groups :**

- Industrial Parts
- Dinner Ware
- Furniture
- Lawn and Garden



"Building Quality Tooling for the Plastic's Industry since 1961"

ANGLE[®] is a Registered Trademark of Angle Tool Works Inc.
© Copyright 2018 Angle Tool Works Inc.
also known by many customers as Angle Tool Co.

Today's Date: Wednesday, February 06, 2019
Page Last Updated 04/15/2018



ANGLE TOOL WORKS INC.

Repair, Service, and New Injection Molds

Angle Tool Works
Home
Contacts
Directions

Angle Tool Works
Thermoform
Tooling
All Types

Angle Tool Works
Thermoform
Product Development
Services

Angle Tool Works
Compression Molds
Injection Molds,
Blowmold Tooling

ENGITECS
Latin America
Sales & Services
and more

Global
Partners
dexterMT
Europe

- **Complete Design and Engineering Services:**

- Siemens Unigraphics NX
- CAD Solid Model Mold Design
- CAD Solid Model Product Design
- Auto Cad DXF

- **Expertise in Injection Mold Building Includes:**

- Retractable Mold Core Sections
- Break A-Way and sliding mold sections
- Insert Molding
- De-molding and Knock-out Technology
- Product Take-Out Technology

- **Complete Mold Services, Specializing in:**

- New Injection Molds
- Repair and Service of Existing Injection Molds
- Modification of Existing Injection Molds

- **Our Injection mold building and repair experience includes expertise of the following product groups :**

- Packaging for Food Containers
- Industrial Components and structures
- Automotive
- Lawn and Garden

"Building Quality Tooling for the Plastic's Industry since 1961"



® is a Registered Trademark of Angle Tool Works Inc.
© Copyright 2018 Angle Tool Works Inc.
also known by many customers as Angle Tool Co.

Today's Date: Wednesday, February 06, 2019
Page Last Updated 04/15/2018

ANGLE[®] ANGLE TOOL WORKS INC.

Design and Manufacturing of Bottle Blow Molds

Angle Tool Works
Home
Contacts
Directions

Angle Tool Works
Thermoform
Tooling
All Types

Angle Tool Works
Thermoform
Product Development
Services

Angle Tool Works
Compression Molds
Injection Molds,
Blowmold Tooling

ENGITECS
Latin America
Sales & Services
and more

Global
Partners
dexterMT
Europe

- **Complete Design and Engineering Services:**

- Siemens Unigraphics NX
- CAD Solid Model Mold Design
- CAD Solid Model Product Design
- Auto Cad DXF

- **Expertise in Mold Building Includes:**

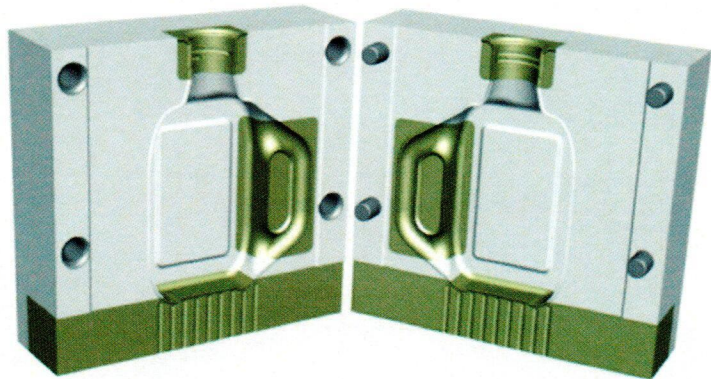
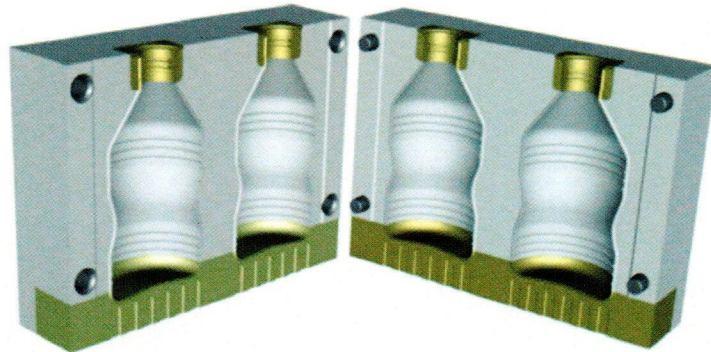
- Retractable Mold Core Sections
- Break A-Way and sliding mold sections
- Pre-Pinch Bars
- Insert Molding
- De-tabbing Mechanisms
- De-molding and Knock-out Technology
- In Mold Hole Piercing
- Product Take-Out Technology

- **Complete Mold Services, Specializing in:**

- New Molds
- Repair of Existing Molds
- Modification of Existing Molds

- **Our bottle mold building includes experience in:**

- Extrusion Blow Process
- Injection Stretch Blow Molding Process
- Shuttle Molding Processes
- Rotary Molding Processes
- Food Application and Water bottle products
- Chemical and Personal Cosmetic bottles



"Building Quality Tooling for the Plastic's Industry since 1961"

ANGLE[®] is a Registered Trademark of Angle Tool Works Inc.
© Copyright 2018 Angle Tool Works Inc.
also known by many customers as Angle Tool Co.

Today's Date: Wednesday, February 06, 2019
Page Last Updated 04/15/2018

ANGLE[®] ANGLE TOOL WORKS INC.

Design and Manufacturing of Automotive Blow Molds

Angle Tool Works
Home
Contacts
Directions

Angle Tool Works
Thermoform
Tooling
All Types

Angle Tool Works
Thermoform
Product Development
Services

Angle Tool Works
Compression Molds
Injection Molds,
Blowmold Tooling

ENGITECS
Latin America
Sales & Services
and more

Global
Partners
dexterMT
Europe

• **Complete Design and Engineering Services:**

- Siemens Unigraphics NX
- CAD Solid Model Mold Design
- CAD Solid Model Product Design
- Auto Cad DXF

• **Expertise in Mold Building Includes:**

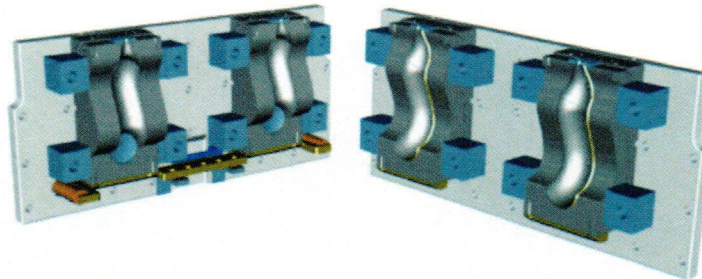
- Retractable Mold Core Sections
- Break A-Way and sliding mold sections
- Pre-Pinch Bars
- Insert Molding
- De-molding and Knock-out Technology
- In Mold Hole Piercing
- Product Take-Out Technology

• **Complete Mold Services, Specializing in:**

- New Molds
- Repair of Existing Molds
- Modification of Existing Molds

• **Our mold building experience includes expertise of the following product groups :**

- Air Ducts
- Seat Belt Covers
- Overflow Tanks
- Fuel Tanks
- Seat Backs
- Floor Panels
- and more..



"Building Quality Tooling for the Plastic's Industry since 1961"

ANGLE[®] is a Registered Trademark of Angle Tool Works Inc.
© Copyright 2018 Angle Tool Works Inc.
also known by many customers as Angle Tool Co.

Today's Date: Wednesday, February 06, 2019
Page Last Updated 04/15/2018



ANGLE TOOL WORKS INC.

Design and Manufacturing of Industrial Blow Molds

Angle Tool Works
Home
Contacts
Directions

Angle Tool Works
Thermoform
Tooling
All Types

Angle Tool Works
Thermoform
Product Development
Services

Angle Tool Works
Compression Molds
Injection Molds,
Blowmold Tooling

ENGITECS
Latin America
Sales & Services
and more

Global
Partners
dexterMT
Europe

- **Complete Design and Engineering Services:**

- Siemens Unigraphics NX
- CAD Solid Model Mold Design
- CAD Solid Model Product Design
- Auto Cad DXF

- **Expertise in Mold Building Includes:**

- Retractable Mold Core Sections
- Break A-Way and sliding mold sections
- Pre-Pinch Bars
- Insert Molding
- De-molding and Knock-out Technology
- In Mold Hole Piercing
- Product Take-Out Technology

- **Complete Mold Services, Specializing in:**

- New Molds
- Repair of Existing Molds
- Modification of Existing Molds

- **Our mold building experience includes expertise of the following product groups :**

- Industrial Packaging
- Drum Molds, up to 55 gallons
- Furniture
- Lawn and Garden



"Building Quality Tooling for the Plastic's Industry since 1961"



® is a Registered Trademark of Angle Tool Works Inc.
© Copyright 2018 Angle Tool Works Inc.
also known by many customers as Angle Tool Co.

Today's Date: Wednesday, February 06, 2019
Page Last Updated 04/15/2018

ANGLE[®] ANGLE TOOL WORKS INC.

Design and Manufacturing of Case and Panel Blow Molds

Angle Tool Works
Home
Contacts
Directions

Angle Tool Works
Thermoform
Tooling
All Types

Angle Tool Works
Thermoform
Product Development
Services

Angle Tool Works
Compression Molds
Injection Molds,
Blowmold Tooling

ENGITECS
Latin America
Sales & Services
and more

Global
Partners
dexterMT
Europe

- **Complete Design and Engineering Services:**

- Siemens Unigraphics NX
- CAD Solid Model Mold Design
- CAD Solid Model Product Design
- Auto Cad DXF

- **Expertise in Mold Building Includes:**

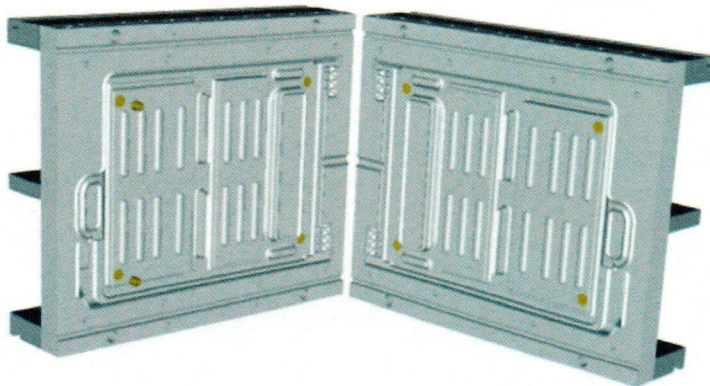
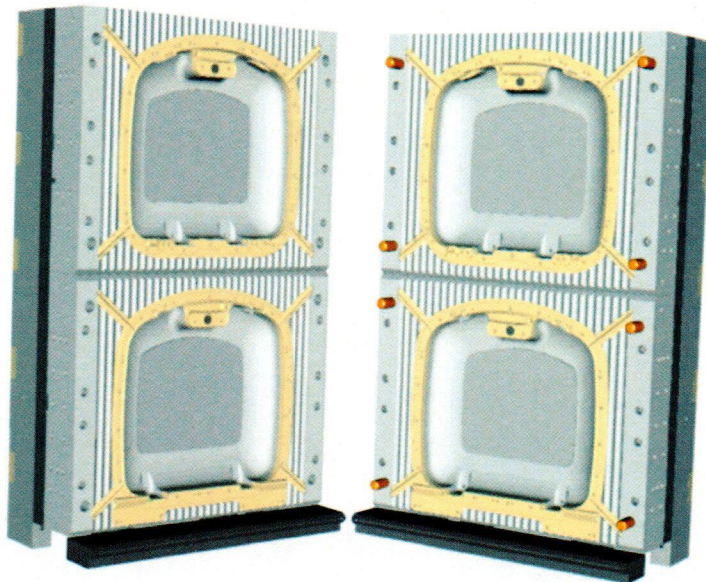
- Retractable Mold Core Sections
- Break A-Way and sliding mold sections
- Pre-Pinch Bars
- Insert Molding
- De-molding and Knock-out Technology
- In Mold Hole Piercing
- Product Take-Out Technology

- **Complete Mold Services, Specializing in:**

- New Molds
- Repair of Existing Molds
- Modification of Existing Molds

- **Our mold building experience includes expertise of the following product groups :**

- Industrial Packaging
- Drum Molds, up to 55 gallons
- Furniture
- Lawn and Garden



"Building Quality Tooling for the Plastic's Industry since 1961"

ANGLE[®]

is a Registered Trademark of Angle Tool Works Inc.

© Copyright 2018 Angle Tool Works Inc.

also known by many customers as Angle Tool Co.

Today's Date: Wednesday, February 06, 2019
Page Last Updated 04/15/2018



ANGLE TOOL WORKS INC.

Trim-In-Place Inline and Tilt Bed Thermoform Molds

Angle Tool Works
Home
Contacts
Directions

Angle Tool Works
Thermoform
Tooling
All Types

Angle Tool Works
Thermoform
Product Development
Services

Angle Tool Works
Compression Molds
Injection Molds,
Blowmold Tooling

ENGITECS
Latin America
Sales & Services
and more

Global
Partners
dexterMT
Europe

- **We Design, Build, Modify, Repair and Produce Replacement Components for Trim-In-Place Inline and Tilt Bed Tooling for all your major machine manufacturers:**

- Illig RDM 50K, 54K, 70K, 75K
- Kiefel KTR-4, KTR-5, KTR-6
- Gabler Swing, M-Line and Varius
- TSL Thermoforming Systems LLC
- OMV and GN

- **Product Development Services:**

- Product Design
- Product Sampling

- **Complete Design and Engineering Services:**

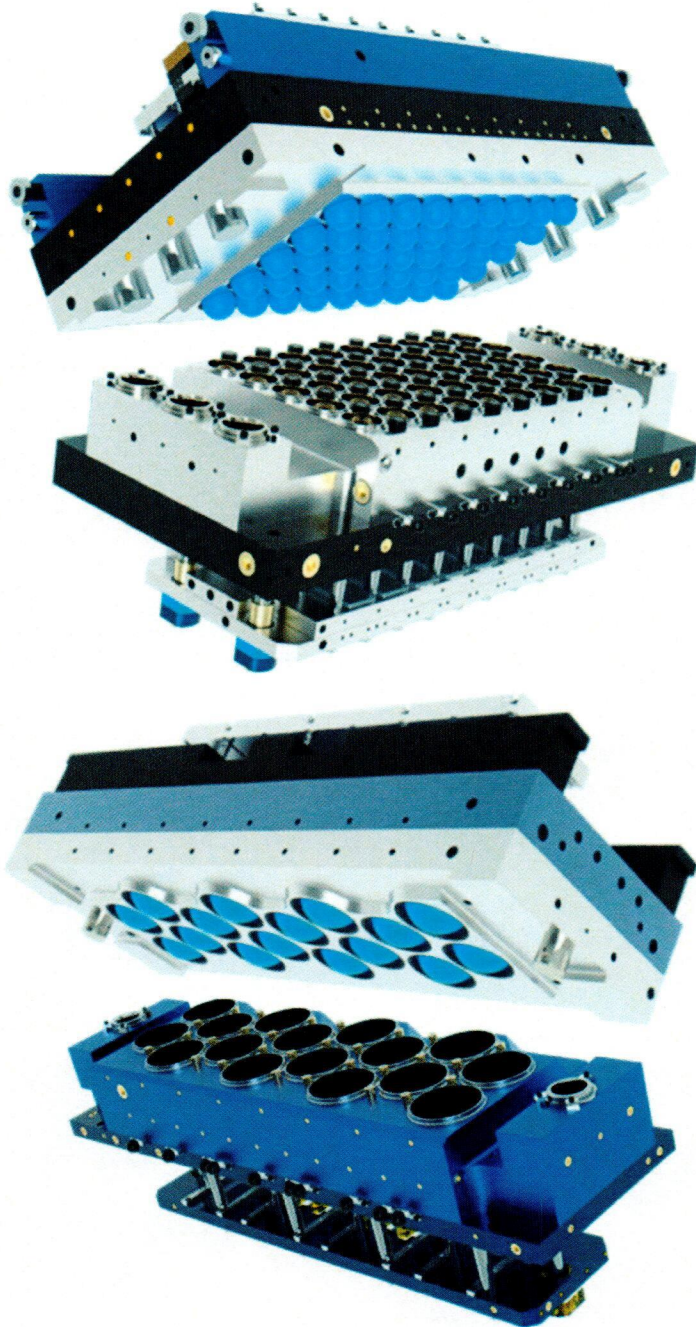
- Siemens Unigraphics NX
- CAD Solid Model Mold Design
- CAD Solid Model Product Design
- Auto Cad DXF

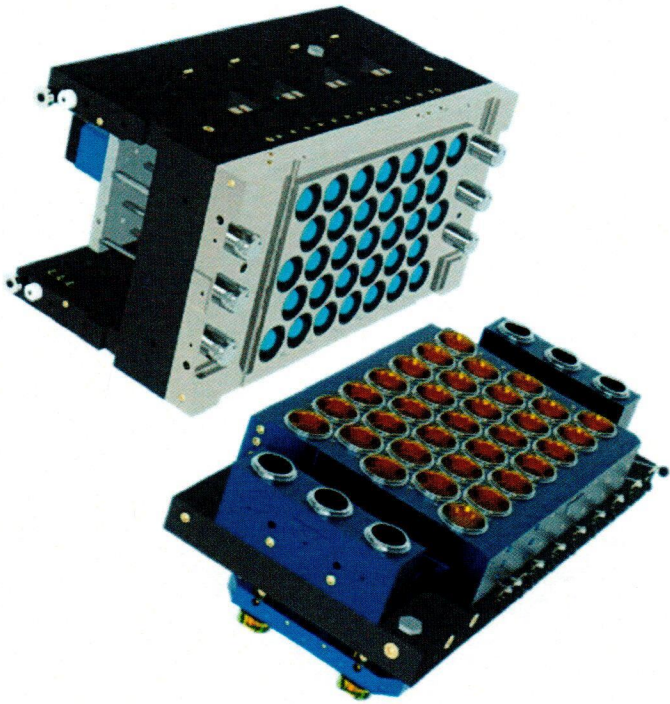
- **Our mold building experience includes products for:**

- Single Serve Pods
- Yogurt and Apple Sauce Cups
- Large Food Containers
- Plastic Cup and Lids
- Medical and Food Packaging
- Industrial Packaging
- Furniture, Lawn and Garden Products
- Automotive Products
- Agricultural Products

- **Our mold building includes experience with:**

- Oriented Polystyrene
- Polypropylene
- High Density Polyethylene
- EPS Foam
- CPET
- APET
- PVC
- Multi-layer co-extruded material combinations





"Building Quality Tooling for the Plastic's Industry since 1961"

ANGLE® is a Registered Trademark of Angle Tool Works Inc.
© Copyright 2018 Angle Tool Works Inc.
also known by many customers as Angle Tool Co.

Today's Date: Wednesday, February 06, 2019
Page Last Updated 04/15/2018

ANGLE[®] ANGLE TOOL WORKS INC.

Thermoform stacker Tooling

Angle Tool Works
Home
Contacts
Directions

Angle Tool Works
Thermoform
Tooling
All Types

Angle Tool Works
Thermoform
Product Development
Services

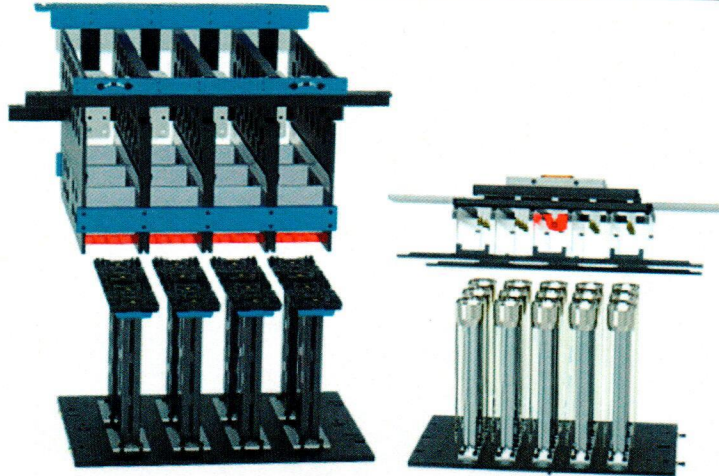
Angle Tool Works
Compression Molds
Injection Molds,
Blowmold Tooling

ENGITECS
Latin America
Sales & Services
and more

Global
Partners
dexterMT
Europe

- **We Design, Build, Modify and Repair Stacker Tooling for all your major machine manufacturer Machines, including;**

- Illig RDM 50K, 54K, 70K, 75K
- Illig RDK 80, RDKP 72, RV 53, RV 74, FS 48
- Kiefel Tech KTR-4, KTR-5, KTR-6
- Kiefel Tech KMD 75, 75, 85, 90
- Gabler Swing, M-Line and Varius
- TSL Thermoforming Systems LLC
- OMV and GN
- Brown - Lyle
- Irwin - Sencorp - ZED



- **Product Development Services:**

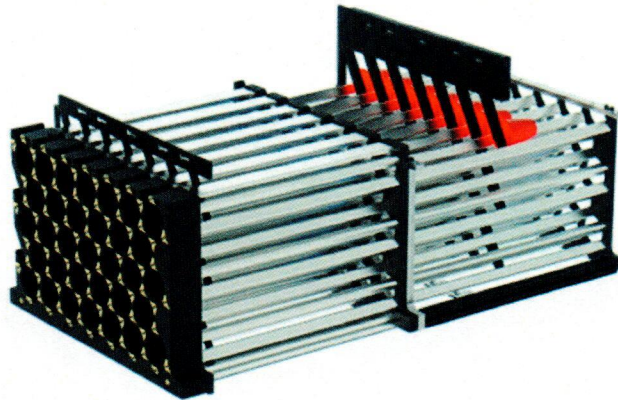
- Product Design
- Product Sampling

- **Complete Design and Engineering Services:**

- Siemens Unigraphics NX
- CAD Solid Model Mold Design
- CAD Solid Model Product Design
- Auto Cad DXF

- **Our mold building experience includes products for:**

- Single Serve Pods
- Yogurt and Apple Sauce Cups
- Large Food Containers
- Plastic Cup and Lids
- Medical and Food Packaging
- Industrial Packaging
- Furniture, Lawn and Garden Products
- Automotive Products
- Agricultural Products
- Medical and Food Packaging



- **Our mold building includes experience with:**

- Oriented Polystyrene
- Polypropylene
- High Density Polyethylene
- EPS Foam
- CPET
- APET
- PVC
- Multi-layer co-extruded material combinations

"Building Quality Tooling for the Plastic's Industry since 1961"

ANGLE[®]

is a Registered Trademark of Angle Tool Works Inc.
© Copyright 2018 Angle Tool Works Inc.
also known by many customers as Angle Tool Co.