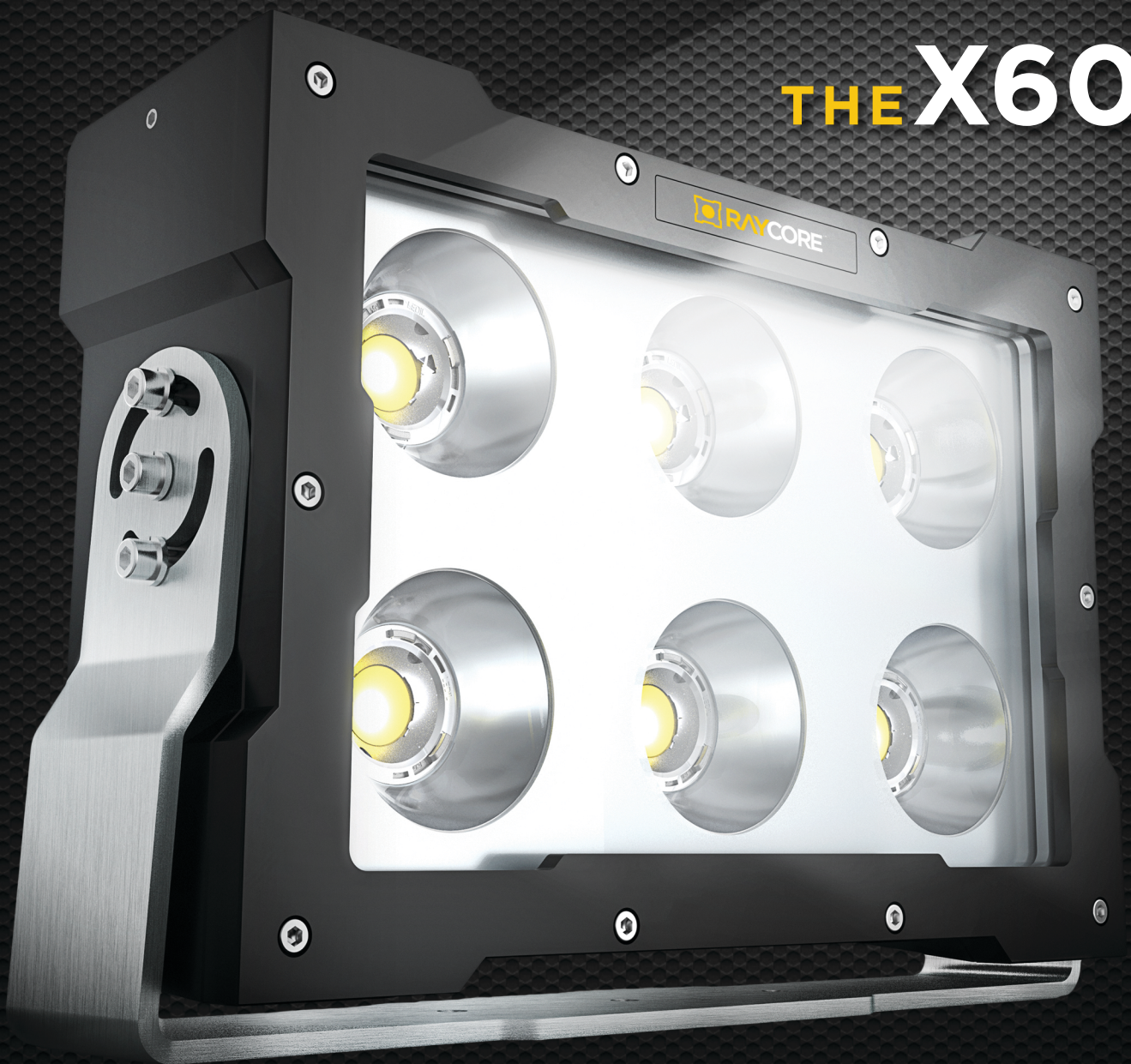


RAYCORE™

HARDWORKING LIGHTS

THE X60

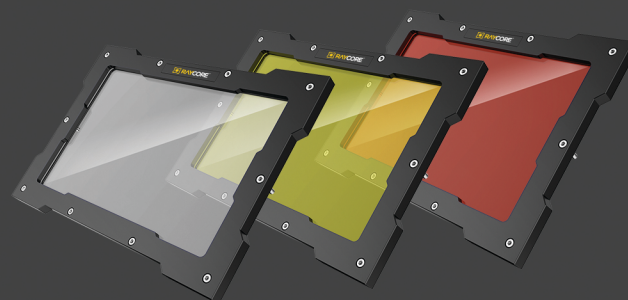


X60

TURN NIGHT INTO DAY



ONE PART NUMBER ENDLESS POSSIBILITIES



Detachable face for lens replacement and beam color customization.

- Input Voltage: 24-30V DC
- Nominal Power @ 24V DC: 480 Watts
- Nominal Amp Draw @ 24V DC: 20 A
- Raw Lumen Output: 65,600 lm
- Hybrid Spot/Flood Beam Pattern
- IP 6K9K Waterproof (Pressure Wash, Submersible)
- No-Slip ¼" (6.4 mm) Stainless Steel Trunnion Bracket
- Aerospace-Grade Aluminum Housing
- Black Non-Stick Powder-Coat Finish
- Detachable Face with Customizable Lens Color
- High-Impact Makrolon® AR Lens
- Anti-Yellowing UV Lens Treatment
- RDC™ Technology (Ruggedized Diode Core)
- U.S. Patent-Pending
- Deutsch DTP Connectivity (Counterpart Included)
- Weight (No Bracket): 46 lbs. (20.9 kg)
- Weight (w Bracket): 54 lbs. (24.5 kg)
- Dimensions (w Bracket): 20.4" x 4.6" x 12.8"
(51.2 cm x 11.7 cm x 32.5 cm)
- Adjustable Tilt: +40°, -90°
- Operating Temperature: -40°F to +185°F
(-40°C to +85°C)
- Protected: Overheat, Under/Over Voltage, Reverse Polarity
- Lifespan: 50,000+ Hours
- Color Temperature: 5,000° K
- Available 100-240 VAC/DC Power Supply Attaches Directly to Back of Light
- 10 ft. SJOOW16-3 Cable (Attached to Optional Power Supply)
- Available Daylight Sensor Attachment

