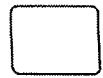
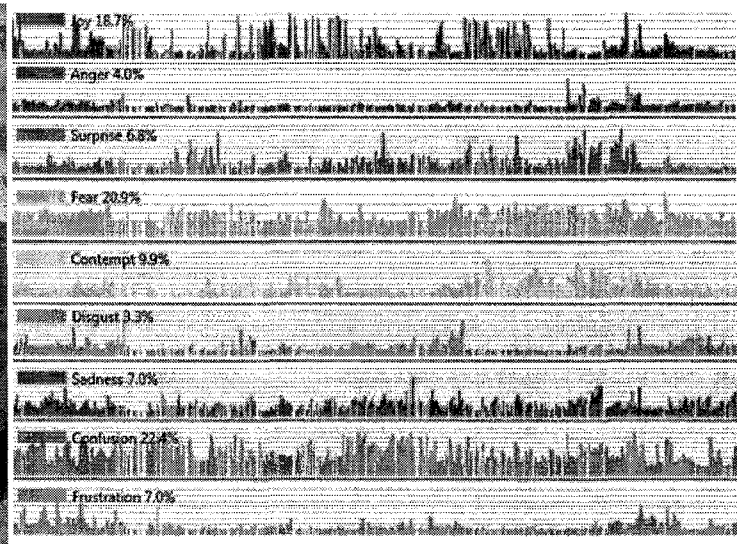
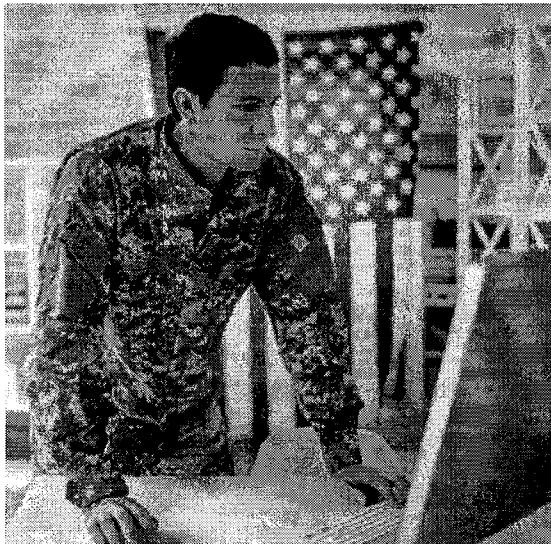


Future Life.US



Face2Face™

Bringing Objective Measurement to Behavioral Health



Future Life is developing **Face2Face™** a software platform for advanced mental health evaluation and treatment.

Face2Face™ combines telehealth, microexpression detection, and speech to text into one convenient platform. A neural network model of this data is used to more accurately assess mental health.

VETERANS SEEKING TREATMENT

Future Life.US

Telehealth is a new and rapidly-growing industry that enables clinicians to interact with their patients over great distances and provide services to those who would otherwise not have access. This allows patients to **get the care they need** from the comfort of home or anywhere with an internet connection. Telehealth improves accessibility and reduces the cost of patient treatment which is desperately needed to help reintegrate our combat veterans into modern lifestyle.



Face2Face™ automatically analyzes the patient's facial expressions and applies this data to specially designed algorithms, watching for signs of PTSD and other mental illnesses. By recording and analyzing the patient's emotional response in real time as well as incorporating data from past sessions, the software will be able to **detect patients in crisis** before their situation deteriorates.

MENTAL & BEHAVIORAL HEALTH APPLICATIONS

Future Life US



There are a wide range of applications in which Face2Face™ can make a positive impact.

The Future Life team is currently looking at developing the software platform to specialize in the following areas where mental and behavioral health take focus:

PTSD Treatment

Other Traumas: Sexual Assault, Urban Trauma, First Response

Predictive Behavior: Military, Non-Military

Deception Detection

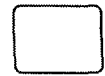
Human Resources/Job Interview

Risk Assessment in Adolescents

Future Life Roadmap

Projects and Progress

Future Life.US



Continuous Academic Studies with American University,
Department of Psychology, Emotions Lab, starting
February 2018

Study #1: Evaluation of Emotional Reactivity and Accuracy of Emotional Responses to Standardized Interpersonal Stimuli in Patients with Borderline Personality Disorder using the Face2Face™ emotional analysis system.

— Interpersonal Emotion Lab with Dr. Nathaniel Herr

Study #2: Measuring the Impact of Sleep Deprivation as an Analog for Stress on Emotional Reactivity and Resilience using Face2Face™ emotional analysis systems.

— In conjunction with the Stress and Emotion Lab, Dr. Kathleen Gunthert

Proof-of-Concept Clinical Study with Boston VA Healthcare System (Behavioral Science Division), starting May 2018

A study in which we collect data from two groups of 25 subjects: one identified as having PTSD and the other PTSD-free, in order to establish the relationship between the presence of PTSD and evidence of involuntary emotional self-regulation in response to a set of 100 stimulus pictures with established degrees of emotional valance and arousal. This study will include a split-half design to explore if the subjects' levels of PTSD not only predict their reactivity to the stimulus pictures but their reactivity to the stimulus pictures will predict the subject's levels of PTSD.

— Dr. Brian Marx, VA Boston

Proof-of-Concept Clinical Trial with Carrier Clinic, Belle Mead, NJ, starting May 2018

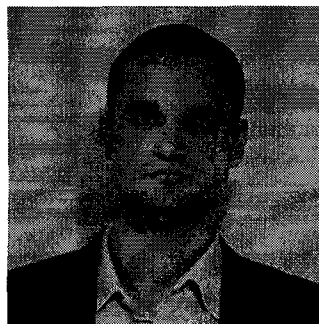
Future Life.US Outcome of discussions with Carrier CEO and staff: Proof-of-concept study of 60 patients in early recovery from substance abuse. Clinician-facilitated sessions will be conducted in-person and by telehealth, using Facial Microexpressions of Emotion (FMEE) as the clinical tool to impact the incidence of relapse. The study will be conducted under the auspices of a leading academic institution, Rutgers University. Upon completion, Carrier Clinic will initiate a larger study with 300-500 private practice patients. Carrier Clinic is the largest Mental Health facility in New Jersey.

— Donald Parker, Carrier Clinic President & CEO

The American Psychiatric Association (APA) has just approved a poster session on Face2Face™ at their 2018 Annual Convention in the Javits Center (NYC), from May 5th-9th.

EXECUTIVE TEAM

Committed to advancing mental healthcare



John Kilmer
Founder, CEO, & Chairman