



Whitepaper: Microsegmentation in Healthcare

Check out the newest guidance for securing healthcare environments >



Inventory and Visibility (I/V)

An XRay for your devices



Device Identification

Cynerio recognizes all connected devices that interact with any part of the network in real-time, bringing insight into network-level risks to the organization.



Asset Inventory

Compiles a high-level asset inventory including device types and the number of units for each. No connected device will fall through the cracks.



Detailed Insight

Provides up to 150 specific details for each device, including type, category, vendor, IP address, operating system, when it was last seen on the network, and more.



Risk Visibility

Identify device-specific risks, listing each software vulnerability with mitigation actions and other resources.



Manufacturer Digitization

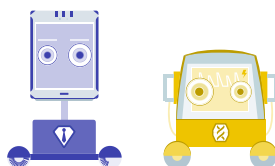
Digitize device disclosure data to help with proper configuration. Automatically pulls and digitizes MDS2 and information on specific devices from FDA databases.



HTM Efficiency

Functionalities like automated device discovery, physical device location, CMMS integrations, and vendor data tracking eliminate time-consuming manual work.

[View Product Brochure](#)





Whitepaper: Microsegmentation in Healthcare

Check out the newest guidance for securing healthcare environments >



Cynerio implementations at hundreds of global hospitals, so you can find out which devices tend to have vulnerabilities, what kinds of risks they present to patient safety and care, and how to remediate security issues.

Get a CMMS Risk Evaluation

CMMS Risk Reporting Insight

IoT Devices	IoMT Devices	Device Types	Security Posture Score (out of 100)
78	1895	98	47.2 Score / 74.8 Benchmark

Top Risks	Affected Devices	CVSS Score	EPSS Score	#
URGENT/11	Infusion Pumps	9.8	93%	188
EternalDarkness	GE Ultrasounds	9.5	95%	12
BlueKeep	Mammography	9.8	96%	2
Weak Credentials	GE X-Rays	9.0	80%	4
Default HTTP Credentials	Hematology Analyzers	8.4	90%	12

Device summary and risk details

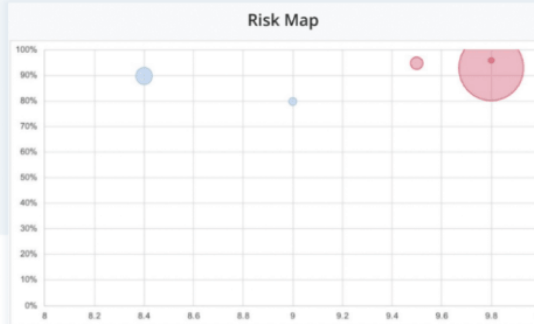


Malware Name	Types	Assets
Conti	Ultrasound	14
Hive	Mammography	6

Asset risk summary

Mitigation Actions	Type	Model	Assets	Score Rank
Update Firmware	Infusion Pump	8015	188	1.89
Apply E/W Segmentation	Ultrasound	Logiq S8, Vivid E9, Vivid E95	12	1.12
Apply E/W Segmentation	Mammography	Selenia Dimensions	2	0.83
Change Credentials	X-Ray	Precision 500D	4	0.82
Change Credentials	Hematology Analyzer	I-STAT	16	0.81
Upgrade SSH Server	NM	Discovery	4	0.55
Upgrade Firmware	Patient Monitor	VC150	99	0.04

Mitigation guidance



Prioritized risk map

See Why Cynerio Is the Leader in Medical Device Security

Request a Demo





Whitepaper: Microsegmentation in Healthcare

Check out the newest guidance for securing healthcare environments >



Cynerio



Solutions

- Cynerio Platform
- Attack Detection and Response (ADR)
- Preventative Risk Management
- Inventory and Visibility

Services

- Managed Services

Resources

- Blog
- Rapid Recap Videos
- Threat Intelligence
- White Papers
- Webinars
- Datasheets
- Use Cases

Company

- About Us
- Leadership
- Press Releases
- Careers
- Contact Us

Partners

- Technology Partners
- Resellers and Distributors
- Managed Services