



20 Product 23 Catalog

800-784-8080

sales@mmistorage.com

mmistorage.com

 [LinkedIn](#)



Trusted in These Stockrooms & More!

allbirds

EVERLANE

Neiman Marcus

ANTHROPOLOGIE

free people

Timberland 

 ATHLETA

JOHNSTON & MURPHY

TORRID

 Backcountry

Madewell

VUORI

crocs[™]

MICHAEL KORS

YETI[®]

DICK'S
SPORTING GOODS

rag & bone
NEW YORK

Table of Contents

Mobile Shelving Systems	4
Mobile System Options	5
Shelving Frame Options	6
Shelving Compatibility	7
End Panel Options	8
Shelf Customization	9
Specialty Shelving	10
Secure Storage	11
Desks and Tables	12
Featured Applications	13
Services Provided	14

MMI Storage Solutions

is a long time supplier of retail storage systems and accessories. MMI not only provides brand new systems for our clients, but we also are able to fit existing shelving units onto our high density mobile systems.



Mobile Shelving Systems

Dramatically increase stock capacity compared to static shelving layouts.



Mechanical Systems

Mechanical assist systems are available when the load is excessive or the carriages are long. Aisle locks are standard and all of our mechanical systems have 3 gear ratios to easily move your product.



Manual Systems

Manual systems help to keep costs low while offering many ergonomic features such as anti-tip, brakes and handles. Our manual systems work well for systems with carriages under 12' under normal loading conditions.

Mobile System Options

Every aspect of your system can be perfected with our available options.



Floor Anti-Tip

Our floor anti-tip is approved for all seismic zones. Overhead anti-tip also available.



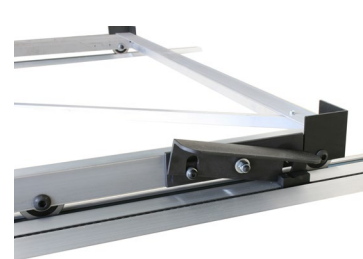
Flue-Spacers

Available in 1-6" to meet fire code. Prevents rows from making contact with each other.



Wooden Deck Between Tracks

Provides even flooring for the entire system.



Foot Brakes

We have standard foot stop brakes as well as our OSHA compliant Positive Stop.



Double Ramp

Provides a smooth transition over tracks for carts or ladders.

Shelving Frame Options

Choose from solid boltless or tab style shelving to accommodate any need.



Rack Solid Boltless Shelving

Heavy duty rivet style shelving with 11-14 gauge frame available with all shelving styles including particle board.

- Heavy capacity varying by size.
- Available in a variety of depth, width and heights.
- Available in mobile or static.








Tab Style Shelving

16 gauge steel frame with steel shelves.

- Uprights being pre-assembled guarantees quick installation.
- Back to back configuration allows individual adjustability on each side which requires no tools.
- Available in mobile or static.

Shelving Compatibility

No matter what shelving type you choose, MMI can ensure compatibility for your frame material of choice.

SHELVING TYPES	RACK SOLID FRAME	RACK TAB FRAME
 <p>Particle Board</p> <p>The most cost-effective shelving option. Store almost anything, especially items that would fall through wire grid shelving. Sturdy and durable with value pricing.</p>	✓	✓
 <p>Wire Grid</p> <p>Wire grid shelving is a very sturdy yet light-weight shelving style that meets most fire codes due to its ability to let extinguishing systems reach more space.</p>	✓	✓
 <p>Perforated Steel</p> <p>51% of the shelf is perforation with holes. Very sturdy and fire resistant. Allows sprinkler systems to reach more area. Best for goods that wire grid could indent e.g. leather.</p>	✓	✓
 <p>Solid Steel</p> <p>Solid steel shelving is available to provide a strong and robust shelf. As a bonus it is very fire resistant in support of your storage needs. Sophisticated looks with secure support.</p>	✓	✓
 <p>Hanging</p> <p>Hanging items are great for retail applications. Hanging prevents wrinkles and creases from folding. Easily replaced with shelving at any time.</p>	✓	✓

End Panel Options

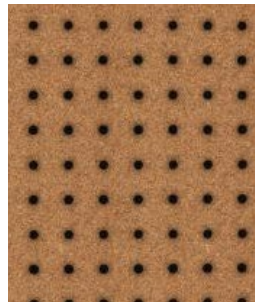
Utilize the end panels for even more storage and organization.



Melamine



Masonite



Pegboard

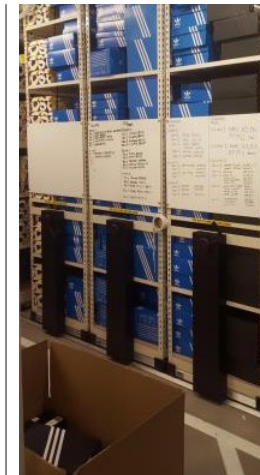


Laminate



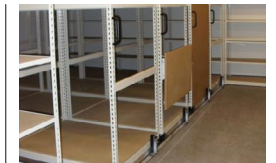
**J Peg Bars/
Hooks**

For hanging accessories you wouldn't store on a shelf.



**Dry Erase
Boards**

Bottom tray and/or marker available.

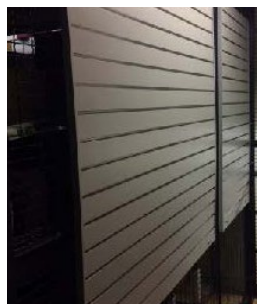


**Folding
Table**

For a temporary work space on the end panel or perimeter wall.



Grid Wall



Slatwall



Steel



**Ladder
Hangers**

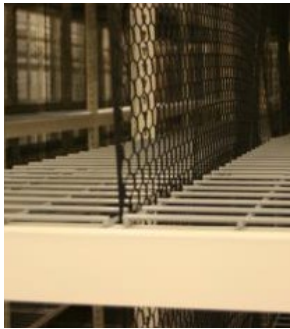
For hanging your folded ladders on the ends of shelving runs.

Shelf Customization

Certain projects require a custom system and MMI Storage Solutions has you covered.



Masonite Splits



Mesh Splits

Split Shelving

Using a shelving split can create twice the amount of space for product in an extremely cost effective way effectively doubling your storage capacity in an organized way.



Bin Dividers

To increase the variety of your storage optimization options.



Masonite Dividers



Metal Dividers

Shelving Dividers

A divider is another great option that can be used in conjunction with many other customization options. They allow for organization and optimization of the storage space provided.



Drawers

An organized option to store smaller items near related products.



Shelf Inserts

Covers wire grid shelving as a non-permanent and cost effective solution.

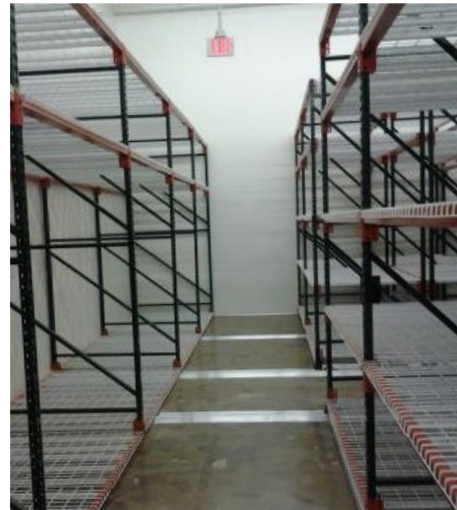
Specialty Shelving

Certain projects require a custom system and MMI Storage Solutions is more than equipped to deal with special projects.



Specialty Shelving

All different types of custom racks or shelving are available!



Bulk/Pallet Racking

For heavy duty and/or warehouse applications. Mobile or static.

Standards & Brackets for Storage Along Walls

- Custom fit to any space
- Any configuration for shelving or hanging
- Shelves available in particle board or melamine
- Plus all accessories



Hang Bar Bracket



Standard



Shelf Bracket

Secure Storage

Safely secure items or even machines that need specialized storage.

Lockers

Available in all sizes, colors, number of tiers, widths, depths & heights. All accessories include combination or key locks. ADA compliant lockers also available.



**Standard
Padlock**



**Visibility
C-Thru**



**Digital
Locking**



Security Cages & Fencing

The security cage effectively encloses any area you need to be locked down without building an entire room for it.



Security Doors

Can be used to safely store a limited quantity of valuables.



Storage Cabinets

Available in all sizes and colors with options to lock for added security.

Desks & Tables

Combining storage and desk surface has never been easier.



Tables

We can provide a multitude of customization options for tables that are tailor-made to your individual business. Small or large makes no difference, we have a solution for you!



Receiving Desk

Available in most widths, depths & heights custom to your needs.

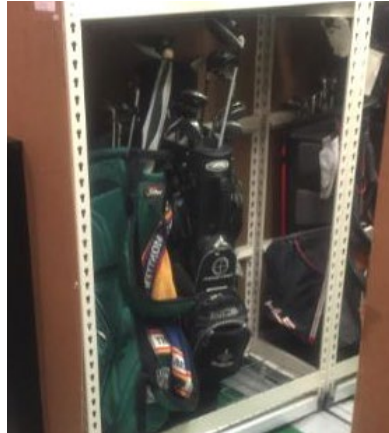


Managers Desk

Available in most widths, depths & heights. Options include: drawer and/or task light. Comes with melamine or laminate desk top.

Featured Applications

Organization and storage for any commercial storage need.



Golf Bag Storage



Large File Cabinet Systems for Admins



Tables For Folding or Shipping/Receiving



Retail Stockrooms



Lockers for School/ Clubs/Employers

Services

No matter the stage of your project, MMI has you covered.



Installation and Maintenance

From start to 10 years after we finish, Mobile Media will be there to help with your storage needs. We can install nationally or internationally, union or non-union.



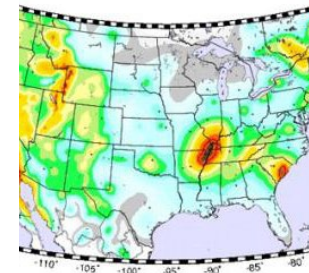
Permit Acquisition

Our account managers will be there to help you step by step including getting any permits necessary to ensure your job is ready to move forward.



Floor Plans

One of our experienced designers will produce the perfect layout in order to help execute your optimal storage saving plan.



Seismic Calculations

We recognize that different regions come with different concerns and we are prepared to deal with that. Seismic calculations are there to help meet building code requirements as well as to go the extra mile with regards to safety.



Site Survey & Capacity Evaluations

If measurements of your space need to be collected we can dispatch a surveyor to assist in giving you a space/cost analysis.



Nationwide Mobile Media Services

Mobile Media is a proud USA Manufacturer and its operations preserve employment for American citizens.



Nationwide Service

800-784-8080


sales@mmistorage.com

mmistorage.com

Mobile Media, Inc.

45 Turner Drive,
Suite 2A,
Middletown, NY 10941

Follow & Review us on:


 [Linkedin](#)

 [Google](#)

 [Facebook](#)

 [Instagram](#)

 [Twitter](#)

 [Youtube](#)

**International
Service also
Available**