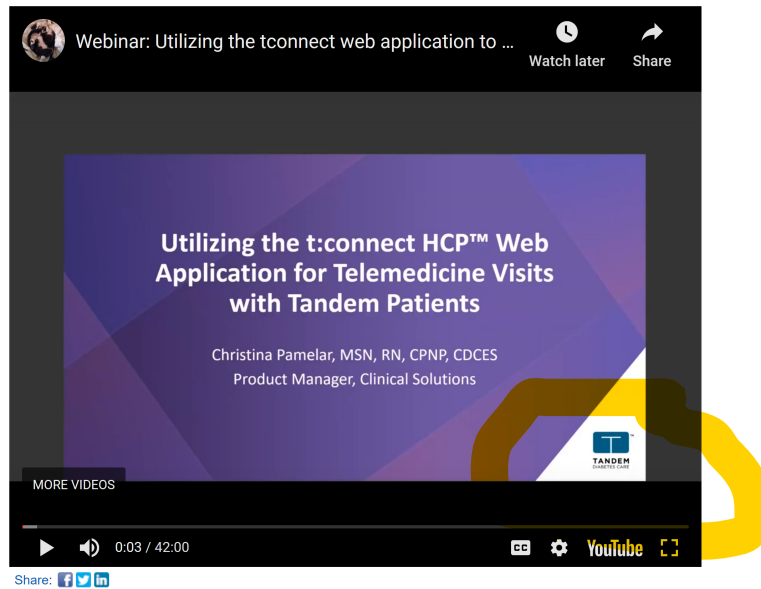


## TANDEM Webinar

Utilizing the t:connect web application to support your telemedicine visits for Tandem users



### Responsible Use of Control-IQ Technology

Even with advanced systems such as the t:slim X2 insulin pump with Control-IQ technology, patients are still responsible for actively managing their diabetes. Control-IQ technology does not prevent all high and low blood glucose events. The system is designed to help reduce glucose variability, but it requires that patients accurately input information, such as meals and periods of sleep or exercise. Control-IQ technology will not function as intended unless all system components, including CGM, infusion sets and pump cartridges, are used as instructed. Importantly, the system cannot adjust insulin dosing if the pump is not receiving CGM readings. Since there are situations and emergencies that the system may not be capable of identifying or addressing, patients should always pay attention to their symptoms and treat accordingly.