

SERVING TODAY'S CUSTOMER WITH TOMORROW'S TECHNOLOGY.

One World Transportation (OWT), based in Brawley CA, is a regional carrier handling refrigerated and non-refrigerated freight. With hubs located in Brawley and Buena Park, California, our operations currently serve Southern California, Nevada, and Arizona regions.

OWT FLEET SERVICES INCLUDE:

OWT's Temperature-controlled Fleet Currently Utilizes:

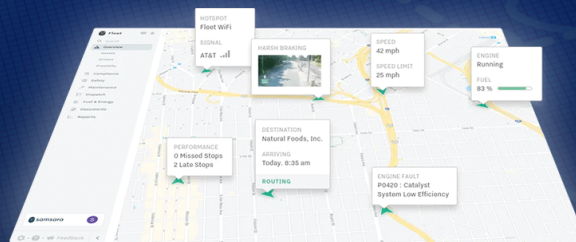
- 24' and 32' boxes
- 42' and 53' trailers

All trucks are equipped with the Samsara Fleet Management Platform

OUR TECHNOLOGY

One World Transportation utilizes the Samsara Fleet Management Platform. Our technology allows our customers to track their freight location and temperature in real-time, as well as offers a variety of management and dispatch solutions for door-to-door support.

- Live GPS overview, and share feature for customers' ETA
- Routing enabled for more accurate dispatching, and proximity share for better routing
- Door sensors for assets to track proper arrival of product to customer
- Sensor for thermos enabled for supervision and alerting in case of default codes
- E-Log capability with app solution for iPads and iPhones



- Fuel efficiency and IFTA feature for better reporting and management
- Dash Camera system with a 60-hour retrieval capability

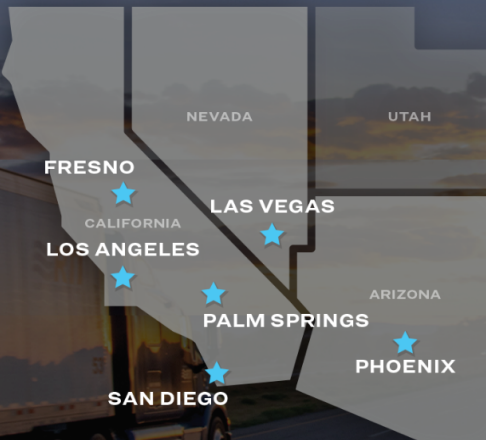
OWT MAINTENANCE SERVICE CAPABILITIES

In addition to regional hauling services, One World Transportation also staffs a mechanic and maintenance crew, licensed and certified to offer comprehensive repair and compliance services.

- 26 years of computer diagnostics and engines certification: Detroit's DD13, DD15; Cummins M14, ISX12, ISX13; Cat; Mercedes 900 and 4000
- Meritor transmissions diagnostics and repair with OEM software
- Bendix ABS and link control
- Certifications: overhaul Detroit engines C9, C12, 3406, 3406E; Cummins N11, N14
- Pro License for Cummins in site
- Professional license for Detroit and Mercedes Benz diagnostics
- Freightliner SAM Diagnostic repair for electrical modules
- Major engine software calibration, reprogramming, reflash of ECM. A/C 134 license, R12, 134A
- All current programs, Cummins, Cat (dozers and motors diagnostic), Detroit, Mack, Isuzu
- Allison automatic transmissions pro-license
- Hydraulics maintenance and install; configuration of PTO and pumps
- System maintenance for all emissions 2010 to current year, for SER and DPF Systems

WHERE WE SERVE

Currently serving the Southern California, Nevada, and Arizona regions.



CONNECT WITH US

OWT Team Contact Information

Pat Henderson, General Manager

(760) 790-6418

phenderson@oneworldtransportation.com

Rosa Vizcarra, Customer Service Manager

(760) 790-6343

rvizcarra@oneworldtransportation.com

Paul Taylor, Fleet Manager

(760) 790-6599

ptaylor@oneworldtransportation.com

General Inquiries

info@oneworldtransportation.com



SERVING TODAY'S CUSTOMER
WITH TOMORROW'S TECHNOLOGY.

© 2021 ONE WORLD TRANSPORTATION