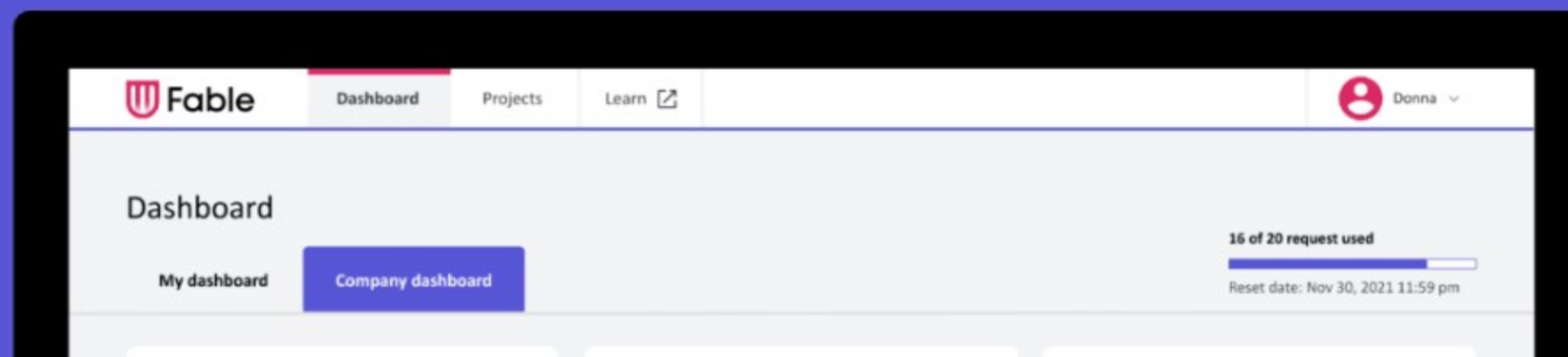


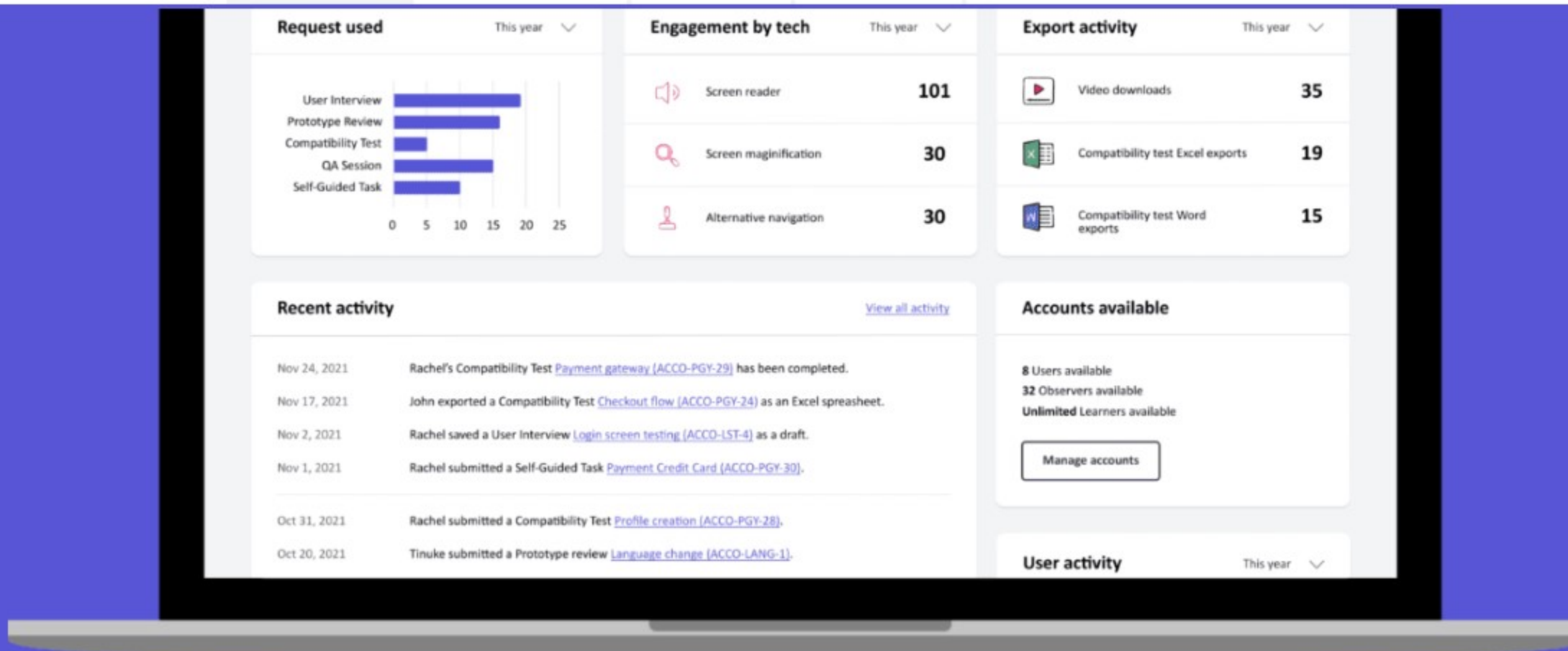
## Fable Engage

# Accessibility testing, powered by people with disabilities.

Fable Engage enables you to connect to people with disabilities remotely and on-demand to accelerate your user research, design, and development.

Schedule A Call









## Fable Engage helps you build exceptional and accessible user experiences

### Test on-demand

Five types of testing, depending on the stage of development and whether it's a researcher, designer, or engineering conducting the test.

- ✓ Skip recruitment
- ✓ Moderated and unmoderated options

- Self-Guided Task - Unmoderated 
- User Interview - Moderated 
- Prototype Review - Moderated 
- Compatibility Tests - Unmoderated** 

✓ Schedule on your own time

QA Sessions - Moderated



### Try multiple configurations

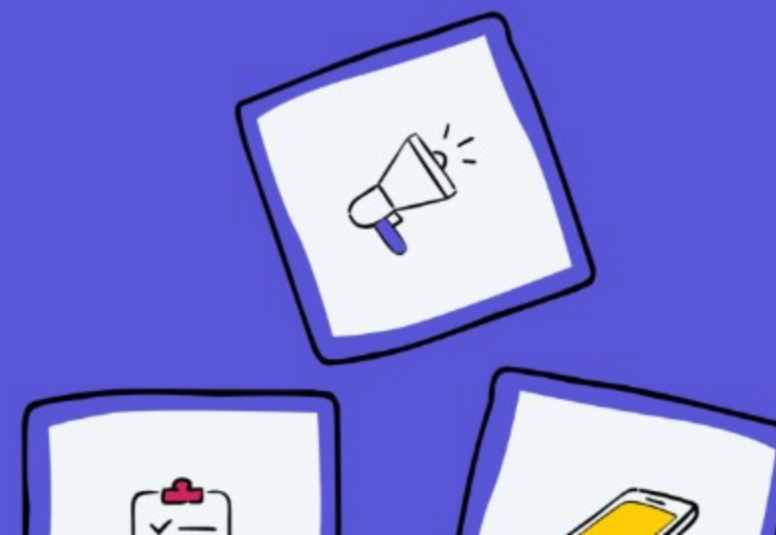
Specify technology configurations that people with disabilities use, so that your products can be used by everyone.

- ✓ 20+ assistive technology configurations
- ✓ Websites, webapps, and native apps
- ✓ Mobile and desktop testing
- ✓ Browser specific testing

### Test products securely

Setup private access for Fable's testers on your staging environment, so you can conduct user acceptance testing for accessibility.

[Trust and security at Fable >](#)





## Tell stories with video

Meet with testers for User Interviews, Prototype Reviews or QA Sessions. Learn directly from the individuals who know accessibility best.

- ✓ Hear what screen reader users hear
- ✓ Video recordings
- ✓ Create video clips
- ✓ Easily share videos and transcripts

**Video editor**

**MICO-HR2-1**

Start clip: 0:00    End clip: 4:27    Create clip    Cancel

**Video files**

| File name                  | Duration | Date      | Created by  | Download                                   |
|----------------------------|----------|-----------|-------------|--|
| MICOR-HR2-1                | 00:54:12 | 18 May 21 | System      | <span>Video</span> <span>Transcript</span> |
| Screen reader button issue | 00:04:12 | 19 May 21 | Mate Rostom | <span>Video</span> <span>Transcript</span> |
| Screen reader form issue   | 00:04:12 | 19 May 21 | Alex Picco  | <span>Video</span> <span>Transcript</span> |



## Benchmark usability

Fable Engage enables you to benchmark your products' accessibility with [Accessible Usability Scale](#), which can be used to measure your progress over time.

- ✓ Get AUS scores on assistive technology user experience
- ✓ Calculate and analyze aggregate accessible usability
- ✓ Track progress based on different assistive technology configurations

### AUS score

75

This score represents the perceived user experience of an assistive technology user.

### Tester configuration



Tech type  
Screen Reader



Assisted tech  
VoiceOver



Device  
Mobile



Browser  
Firefox

## Solutions

[Accessibility Testing](#)[Custom Accessibility Training](#)[Microsoft Partnership](#)[Professional Services](#)[Accessible Usability Scale](#)[Schedule a Demo](#)

## Community

[Tester Community](#)[About Fable Testers](#)[Become a Fable Tester](#)[Subscribe to Fable Insights](#)[Follow Fable on LinkedIn](#)[Follow Fable on Twitter](#)

## Resources

[Fable Blog](#)[Case Studies](#)[Assistive Technology Glossary](#)[WCAG 2.2 Guidance](#)[Layered Accessibility Testing](#)[Benchmarking Accessibility](#)

## Company

[About Fable](#)[Series A](#)[Contact Us](#)[Jobs at Fable](#)[Trust and Security](#)[Privacy Policy](#)