

# a gallery that's *music* to your ears

Explore an ever-growing collection of art that's never been heard before. Then create and share your own melody to help give voice to children and adults who struggle to communicate, including those living with rare epilepsies like Lennox-Gastaut syndrome, Dravet syndrome, or tuberous sclerosis complex.

Q search by artist or by title | search



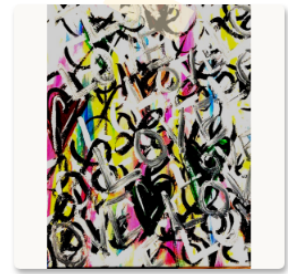
watercolors by Riley T.



The girl in the park.  
by Maleiah B.



Rainbow house & Circus  
by Maleiah B.



LOVE by LO F.



Summer Scene by Leiana V.



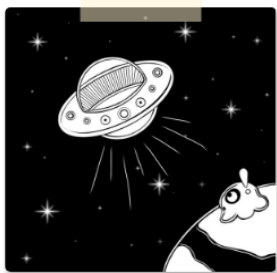
J by Juliana G.



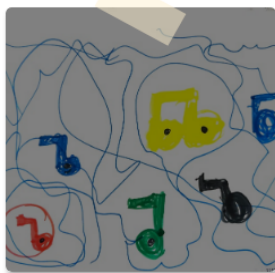
Why bestie UwU by Aes A.



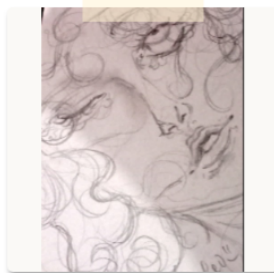
Jolene by Pradeep B.



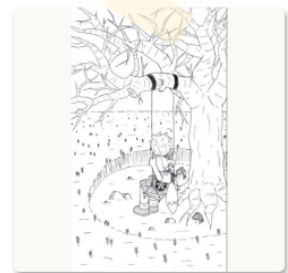
The Journey of Cera  
by Dawn S.



Music notes by Sophie A.



Shannon by Cleo C.



Far by Ian I.

click to load more



