


[Home](#)
[Services](#)
[Resources](#)
[About](#)
[Contact Us](#)


TESTING SERVICES

TESTING FROM SHINE SUPPORTS PERFORMANCE, SAFETY, RELIABILITY, AND COMPLIANCE WITH INDUSTRY STANDARDS.

SHINE's testing services for [wire harnessing](#), [custom cable assembly](#), and [electro-mechanical assembly](#) ensure that your products meet all of your project specifications. Our trained personnel also test wires, cables, and other electrical and electronic components to ensure product safety and compliance with industry standards.

TESTING SERVICES

SHINE's testing services include:

- [Continuity testing](#)
- [Connection resistance](#)
- [Crimp force monitoring](#)
- [Insulation resistance](#)
- [Hipot testing](#)
- [Pull testing](#)

ELECTRICAL AND ELECTRONIC TESTING AND MEASUREMENT

SHINE uses Cirris 1000R+ and Cirris 1100H+ analyzers to verify continuity, connection resistance, and insulation resistance. Made by Cirris Systems, this electrical and electronic test and measurement equipment has hundreds of common and custom-designed fixture interfaces for testing your wire harnesses and [cable assemblies](#).

SHINE also uses equipment made by Associated Research and Fluke Corporation for electrical and electronic testing and measurement. The Hypot PLUS II Model 5560DT from Associated Research features a programmable AC/DC Hipot tester. Fluke 37 digital multi-meters along with various other models measure electric current, voltage, and resistance.

MECHANICAL TESTING SERVICES

For our mechanical testing services, SHINE uses the Alphasat PT-100A and Alphasat PT-150B to verify the tensile strength of wire-to-terminal crimps and solders. Our skilled personnel also use various other types of measurement equipment such as calipers, micrometers, crimp height, comparators, and drill blanks.

IPC/WHMA-A-620 INDUSTRY STANDARDS

SHINE builds and tests all cables to demanding [IPC/WHMA-A-620](#) standards. This is the only industry consensus standard for the requirements and acceptance of cable and wire harness assemblies. SHINE is a member of the Wire Harnessing Manufacturers Association (WHMA), a leading trade organization that works closely with IPC - Association Connecting Electronics Industries to maintain this standard.

GET ANSWERS TO WIRE AND CABLE TESTING QUESTIONS

Do you have questions about wire and cable testing from SHINE? How can we help you?

Contact us at our facility in Adams, Massachusetts for more information.

GET A QUOTE

Do you need custom cable assembly, wire harnessing, or electro-mechanical assembly services? Are you looking for engineering support, too? SHINE is ready to help.

[GET A QUOTE](#)


“During our recent spike in business the SHINE team really came through for us with in short notice. Pass along my gratitude to the entire staff.”

Jeff - Smith Medical



Certified to
ISO 9001:2015
TÜVRheinland
Precision Right.



Get a quote for your project

CONTACT US TODAY

ABOUT

SHINE is an Massachusetts-incorporated, ISO 9001:2015 registered company with automated tooling, a highly-trained workforce, and a commitment to your success.

NEWS

Three Reasons to Visit SHINE at the New England Design-2-Part Show
September 24, 2018

SHINE Will Exhibit at the 2017 Design-2-Part Tradeshow in Marlboro, MA
April 27, 2017

BLOG

Cold Chain Monitoring and COVID-19
November 17, 2020

Transforming Your Company Digitally and Personally
October 28, 2020

Three Ways to Reduce Supply Chain Risk in a Post-Pandemic World
September 28, 2020

Humbition and the Art of Leadership
August 17, 2020

How Electronics Manufacturing Will Change Because of COVID-19
June 11, 2020

TWEETS

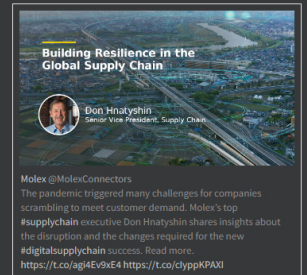
SHINE Shine-A ComSonics Inc Company- Employee Owned @ShineWire
Saturday, April 23rd, 2022 at 9:52am
Current Career Opportunities at ComSonics #jobs <https://t.co/9w00b1hu1A>

SHINE Shine-A ComSonics Inc Company- Employee Owned @ShineWire
Saturday, November 6th, 2021 at 8:28am
Understanding and sharing the feelings of others is emerging as a critical leadership trait, but how can you be sure you are truly empathetic, and not just sympathetic? <https://t.co/pB8h4sG5bL>

SHINE Shine-A ComSonics Inc Company- Employee Owned @ShineWire
Saturday, July 31st, 2021 at 8:20am
Outstanding Massachusetts based supplier. High five @SagerElectric <https://t.co/aYMLGgR6rI>

SHINE Shine-A ComSonics Inc Company- Employee Owned @ShineWire
Monday, June 14th, 2021 at 9:00pm
JIT in a boom, a tall task. <https://t.co/d0l1N76U4>

SHINE Shine-A ComSonics Inc Company- Employee Owned @ShineWire
Saturday, June 12th, 2021 at 9:20am
The pandemic has both profoundly disrupted and accelerated the digital economy and is redefining what good looks like for B2B and B2C supply chain performance. Good read @MolexConnectors <https://t.co/On5SLouGAF>



Molex @MolexConnectors
The pandemic triggered many challenges for companies scrambling to meet customer demand. Molex's top #supplychain executive Don Hnatyshyn shares insights about the disruption and the changes required for the new #digitalsupplychain success. Read more. <https://t.co/agi4Ev9xE4> <https://t.co/clpppKPAxI>

SHINE Shine-A ComSonics Inc Company- Employee Owned @ShineWire
Saturday, May 8th, 2021 at 5:20pm
The current state of copper in the supply chain is creating challenges in the wire and cable assembly sector. Contact SHINE to learn how we are managing the copper situation. <https://t.co/8a1aFq1uPT>

SHINE Shine-A ComSonics Inc Company- Employee Owned @ShineWire
Sunday, March 28th, 2021 at 10:08am
SHINE-a reliable and cost effective contract manufacturer of cable assemblies for medical devices. <https://t.co/wKz9TXnFr>

Research, Compare and Locate

Medical Device Manufacturing Companies

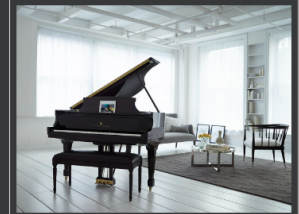
MedicalDesign SOURCING [More Lists](#)

MassDevice @MassDevice
Looking for a complete list of #Medical #Manufacturers & #Suppliers?

Visit <https://t.co/Ud3mNUk7su> for a full directory of companies organized by #Products, #Supplies, #Services, #Equipment, #Certifications & more. <https://t.co/EsirkwagUj>

👍 0 🔄 0 📄 0 ❤️ 0

SHINE Shine-A ComSonics Inc Company- Employee Owned @ShineWire
Sunday, March 14th, 2021 at 8:03pm
Thing of beauty. 😊 <https://t.co/CHhF2UQZiZ>



Steinway & Sons @SteinwayAndSons
Elegant and Inspiring, a Steinway elevates any interior aesthetic. <https://t.co/bSRwpJfLc> <https://t.co/2olQJQMy95>

👍 0 🔄 0 📄 0 ❤️ 0

SHINE Shine-A ComSonics Inc Company- Employee Owned @ShineWire
Friday, January 29th, 2021 at 9:44am
Supply Chain congestion at the ports present big challenges for manufactures. <https://t.co/vdFh7bBZ3u>

👍 0 🔄 0 📄 0 ❤️ 0

SHINE Shine-A ComSonics Inc Company- Employee Owned @ShineWire
Sunday, December 13th, 2020 at 9:59am
The SHINE staff is proud in our role we are playing in this historic event. #sensor #cableassembly #vaccine #Moderna #Pfizer <https://t.co/mqH06Fwпка>

👍 0 🔄 0 📄 0 ❤️ 3

SHINE Shine-A ComSonics Inc Company- Employee Owned @ShineWire
Friday, November 13th, 2020 at 10:30pm
SHINE's dedicated manufacturing resources toward COVID related products remains busy assisting cutting edge manufactures ramp up for vaccine distribution. <https://t.co/UcUlrEweTE>



Reuters @Reuters
U.S. states race to buy ultra cold vaccine freezers, fueling supply worries <https://t.co/kuhOGBK42y> <https://t.co/QpohzZsrYU>

👍 0 🔄 0 📄 0 ❤️ 0

SHINE Shine-A ComSonics Inc Company- Employee Owned @ShineWire
Thursday, October 22nd, 2020 at 8:02pm
Interesting read with interactive charts. <https://t.co/G20E0dnlTH>

👍 0 🔄 0 📄 0 ❤️ 0