



Health Equity Consulting



Eliminating the Barriers to Equitable Health

Health equity is at the heart of all we do. It's our mission. And it's a vision we share with our clients.

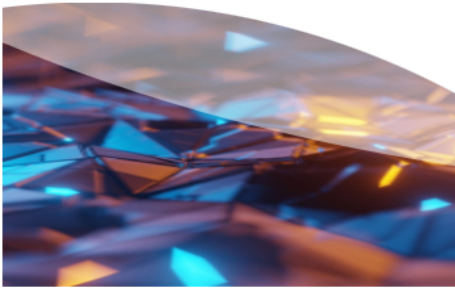
RTI Health Advance helps clients understand and address the root causes of health inequities. Using [data analytics](#), qualitative and quantitative methods, and our proprietary artificial intelligence and machine learning platforms, our health equity consulting services identify the countless ways social, economic, and political systems expose populations to risks and vulnerabilities.

We translate this evidence into practical and effective solutions for health equity that ensure client interventions reach and benefit the most disadvantaged and vulnerable people.

We Help Clients

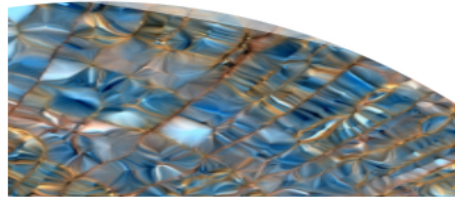
- Understand Population Social Needs
- Select Social Determinants of Health Models
- Design and Implement New Programs and Approaches
- Evaluate Existing Programs and Models
- Validate, Scale, and Optimize Initiatives
- Implement Improvements to Achieve NCQA Accreditation
- Meet Industry Requirements

Practical Solutions That Improve Care



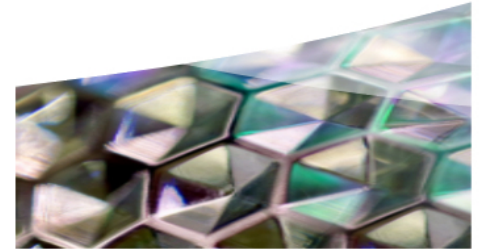
Reaching Under-Resourced Populations

We collaborated with the CDC's division of Diabetes Translation to learn how lifestyle changes and self-management education programs can better reach under-resourced populations—particularly African American, Latinx, Hispanic, and African immigrant communities.



Determining Patterns of Initial and Repeat Mammography Screening

We're working with the CDC's Division of Cancer Prevention and Control to improve mammography screening rates among African American women using medical record abstraction and surveys to understand racial disparities, identify barriers, and reduce late-stage diagnoses.

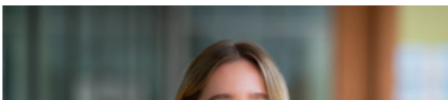


Communicating Effectively About Health Disparities

As part of the National Institutes of Health All of Us Research Program, we're addressing disparities in program activity completion rates among participants who have historically been underrepresented in biomedical research.

Our Experts

[VIEW ALL →](#)





Elena Bravo-Taylor

Research Economist



Franzi Rokoske

Head of Population Health & Equity



Lisa Lines

Senior Health Services Researcher

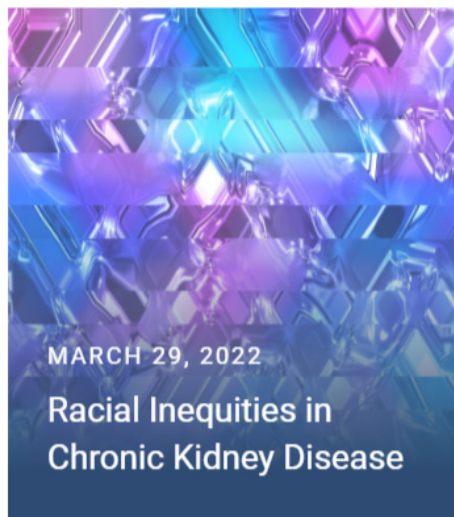
Featured Content

[VIEW INSIGHTS →](#)



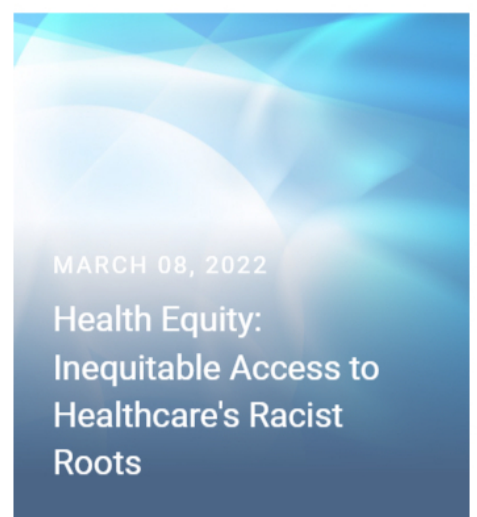
APRIL 26, 2022

Diabetes Population Health Strategies for Better Access to Care



MARCH 29, 2022

Racial Inequities in Chronic Kidney Disease



MARCH 08, 2022

Health Equity: Inequitable Access to Healthcare's Racist Roots

Stay informed on your favorite topics. Give us your email address and we'll let you know when we publish new insights on this topic.

First Name *

Last Name *

Business Email *

Company Name *

- I am a resident of the European Union, United Kingdom, or Switzerland.
- I consent to use of my personal information in accordance with the [Privacy Policy](#).

Submit



- [Privacy Policy](#)
- [Site Map](#)
- [Terms of Use](#)
- [Accessibility](#)

Media Inquiries:
[Contact Heather Rast](#)

RFP Inquiries:
[Contact Laurie Gavitt-Smith](#)

[Keep in Touch →](#)

RTI Health Advance is a business operation
of Research Triangle Institute.

RTI Health Advance uses cookies to offer you the best experience online. By clicking "accept" on this website, you opt in and you agree to the use of cookies. If you would like to know more about how RTI Health Advance uses cookies and how to manage them please view our [Privacy Policy here](#). Click "accept" to agree.

[Accept](#)