

Introducing EOSedge™

Powerful, precise and patient-centered, EOSedge is innovative in low dose, full body, and high-quality musculoskeletal imaging.

PLAY VIDEO





Imaging with a vision

As the leader in low dose 2D/3D imaging, EOS imaging has always challenged the status quo in musculoskeletal image-based solutions. With powerful new technology and improved features, EOSedge is the next step in connecting imaging to care.



Reduced radiation exposure



Exceptional clinical value



Facility-wide efficiency



Patient-centered design



Integration with Advanced Orthopedic Solutions



Reduced radiation exposure¹

EOSedge's new Flex Dose™ technology uses body morphology to modulate radiation throughout scans, delivering minimal exposure to the patient.

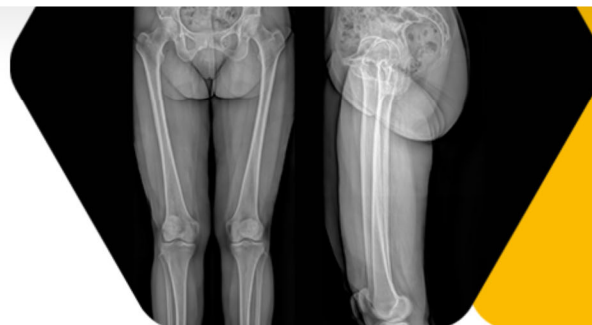


New Flex Dose technology can deliver up to an 80% overall radiation reduction compared to same acquisition without Flex Dose²



Micro Dose technology imparts just a week's worth of natural radiation during follow-up exams³





Experience exceptional clinical value

EOSedge is a general X-ray system powered by a high-resolution photon-counting detector which provides optimal image quality for a broad range of patients.³



Capture 1:1 functional 2D/3D images in less than 20 seconds—with no stitching—that support well-informed diagnoses and 3D surgical planning

MORE FEATURES: OUTSTANDING IMAGE QUALITY ▼

MORE FEATURES: PRECISE ANATOMICAL MEASUREMENTS ▼



Facility-wide efficiency

With the power to scan up to 150 patients a day and deliver complex exams in less than 4 minutes, EOSedge has the potential to increase patient throughput and improve facility efficiency.



Simultaneously capture frontal and lateral full body images in less than 20 seconds for average adults and 15 seconds for children



Large image acquisition zone can accommodate a broad range of patients





Provide a differentiating patient experience

EOSedge's open cabin design makes capturing full body biplanar images fast, easy and safe for a broad range of patients.



Motorized platform and accessible design enables easy patient entry or positioning



Flex Dose modulating technology uses a radiation dose that is As Low As Reasonably Achievable (ALARA) across patient morphology

Integrate with Advanced Orthopedic Solutions (AOS)

EOSedge seamlessly integrates with EOSapps, our web-based surgical planning software, to translate 2D weight-bearing images into highly accurate 3D representations of patient anatomy. EOSapps enables optimal implant positioning, better visualization for surgical strategy and greater confidence in delivering patient-specific surgical solutions.

[3D Modeling](#)[hipEOS](#)[spineEOS](#)[EOSlink™](#)



Contact an EOSedge representative

*REQUIRED FIELDS

SUBMIT

1. EOSedge with Flex Dose technology delivers a 33% overall reduction in dose compared to the previous EOS system while providing the same high-quality imaging for patients with a BMI of <25. Data on file.
2. 80% overall radiation reduction compared to same acquisition without Flex Dose for those patients with a BMI of less than 25. Data on file.
3. Data on file.

EOS imaging

About EOS imaging

EOS imaging is a global medical device company that designs, develops and markets innovative, low dose 2D/3D full body and weight-bearing imaging, rapid 3D modeling of EOS patient X-ray images, web-based patient-specific 3D surgical planning, and integration of the surgical plan into the operating room that collectively bridge the entire spectrum of care from imaging to post-operative assessment capabilities for orthopedic surgery.



[EOS-IMAGING.COM](https://www.eos-imaging.com) [TERMS OF USE](#)

[DOWNLOAD PRODUCT GUIDE](#)



The EOSedge platform is manufactured by EOS imaging. EOSapps web-based surgical planning software is comprised of hipEOS and spineEOS and is manufactured by oneFIT Medical.

EOS 3DServices uses the FDA cleared sterEOS Workstation and does not provide diagnostic or treatment recommendations. The 3D information proposed by EOS 3DServices is limited to the intended use of the sterEOS Workstation.

sterEOS Workstation is manufactured by EOS imaging. The sterEOS Workstation is intended for use in the fields of musculoskeletal radiology and orthopedics in both pediatric and adult populations as a general device for acceptance, transfer, display, storage, and digital processing of 2D X-ray images of the musculoskeletal system including interactive 2D measurement tools. When using 2D X-ray images obtained with the EOS imaging EOS or EOSedge Systems, the sterEOS Workstation provides interactive 3D measurement tools.

© 2022 EOS imaging. All rights reserved.