



Solutions

Industries

Company

CONTACT US

# Stay ahead of the claim.

Let us show you how. Entegral, formerly known as ARMS® Business Solutions, offers configurable, data-driven software to keep insurers, OEMs and collision repair shops out in front of the increasingly complex automotive claims process, improving efficiency for all.

TAKE A TOUR



ENTEGRAL - POWERED BY ENTERPRISE



## INTRODUCING ENTEGRAL

### Welcome to the Better Way to Work

Entegral, formerly ARMS® Business Solutions, is an integrated software platform that enables communication and collaboration between tens of thousands of collision repair shops, insurance providers and other industry professionals around the world. Owned by Enterprise Holdings, the world's largest car rental provider and operator of the Enterprise Rent-A-Car® brand, Entegral complements the value of Enterprise's acclaimed Automated Rental Management System (ARMS®) software by increasing efficiency throughout the claims process.

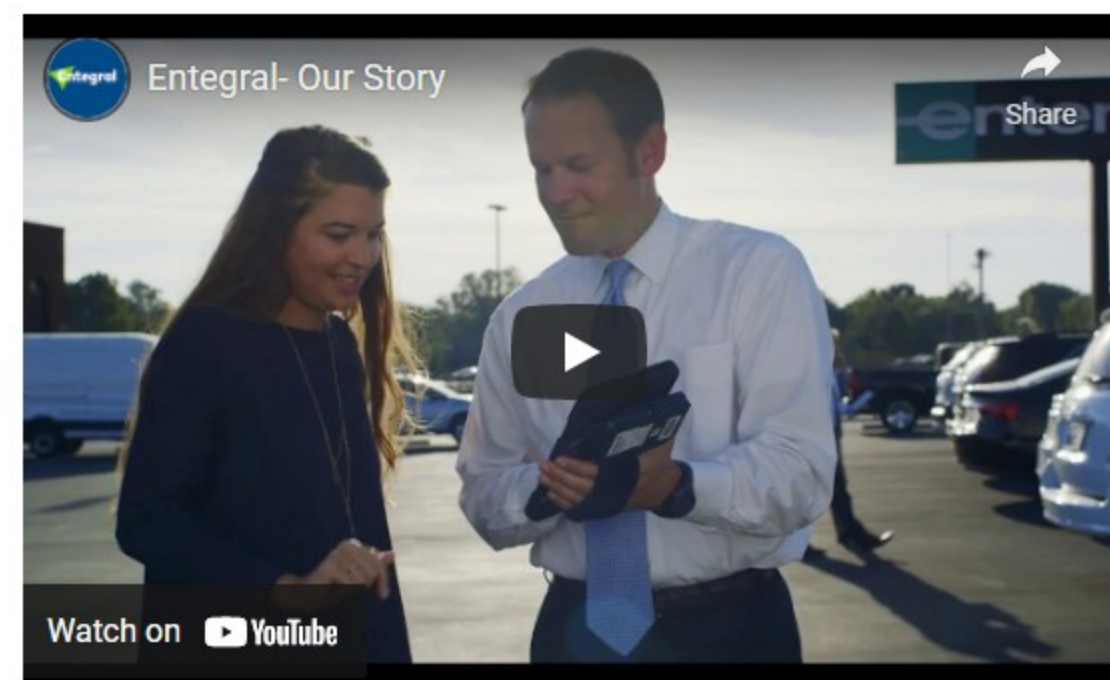
LEARN MORE ABOUT THE ENTEGRAL STORY

“Everything is moving faster today, and that’s important. We’re focused on the idea that faster isn’t good enough... we need to be better, too.” - Dan Wessel, Vice President Entegral

## How we find efficiencies.

Entegral helps claims move faster — with the power of verified, real-time data. We are improving communication and collaboration throughout the process, from before the claim begins through final repair. The end result? Safer, more cost-effective claims — and more satisfied customers.

SEE HOW IT WORKS



## WHO WE HELP

Improving the collision claims process for all.



### Insurers

See how leading insurance companies use Entegral.

- ✓ Streamline direct repair program (DRP) enrollment & management process
- ✓ Display and test on standard operating procedures (SOPs) process
- ✓ Optimize DRP network with data-driven insights
- ✓ Improve customer experience at first notice of loss (FNOL)

**ENTEGRAL FOR INSURERS**



### OEMs

See how future-focused manufacturers use Entegral.

- ✓ Automate management of certified repair network
- ✓ Identify gaps in network geography and capabilities
- ✓ Gain insights on network with verified data
- ✓ Increase customer satisfaction and brand loyalty after repairs

**ENTEGRAL FOR OEMS**

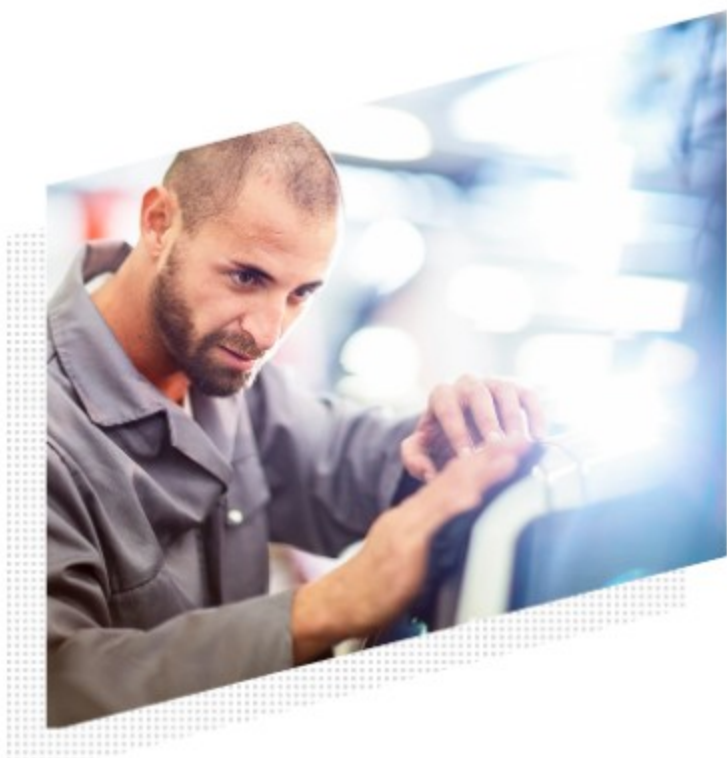


### MSOs

See how growing multi-shop operators use Entegral.

- ✓ Gain efficiencies with organized, up-to-date shop capabilities
- ✓ Identify gaps in capabilities with network analytics
- ✓ Increase opportunities with insurers at FNOL
- ✓ Track DRP participation and compliance

**ENTEGRAL FOR MSOS**



### Body Shops

See how top collision repair facilities use Entegral.

- ✓ Increase visibility with insurers, OEMs and suppliers
- ✓ Increase participation in direct repair programs
- ✓ Ensure accurate reporting of capabilities and certifications
- ✓ Track DRP participation and compliance

**ENTEGRAL FOR BODY SHOPS**

Ready to transform an industry in a leading-edge, agile environment?

**ENTEGRAL CAREERS**

GET STARTED

# It's time to get ahead. It's time for Entegral.

Looking for technical support?  
Connect with us [here](#).

\*Repair Shops: Please visit our support [page](#) for general profile or program inquiries.

Full Name

Company Name

Email Address

Phone Number

I would like to

Get pricing on product suite ▾

\* Information provided within this form will only be used by Entegral to contact you regarding your inquiry. Please consult our [Privacy Policy](#) for more information.

protected by reCAPTCHA  
Privacy - Terms



SUBMIT



Solutions

Entegral Suite  
Network Management  
Smart Locator

Industries

Insurers  
OEMs  
Repair Facilities

Company

Team  
Events  
Contact  
Security  
Careers  
Support  
Log In