

SIGN IN OR CREATE AN ACCOUNT



[Home](#) [About Us](#) [Shop](#) [Product Info](#) [Blog](#) [Contact](#) [User](#) [Search](#)



RINGWORM TREATMENT

\$36.00

Size

1 L 2 L

Add to cart

Buy it now

ESRW – RINGWORM TREATMENT

ESRW is a natural, biological, topical application that will control the fungal spores that cause ringworm in animals and humans. Ringworm has nothing to do with worms; the name is derived from the characteristic red ring that will appear on the infected animal / person's skin. Ringworm is difficult to prevent as the fungus is very common and it is contagious even before symptoms appear.

WHAT CAUSES RINGWORM?

Ringworm is caused by an infection of the hair and surface layers of the skin by a spore forming fungi. Spores germinate and attack the shafts of the hair and the surface layers of the skin. Exudate, from the damaged skin, mixes with debris from skin and hair and forms a crusty scab.

Typically, the ringworm scab is gray and white and higher than the surrounding skin. Infection spreads from the center outwards and results in the circular lesion 1 to 2 inches in diameter. Adjacent lesions may overlap and create larger infected areas. Generally, ringworm lesions appear on the head and neck, but, in severe cases, ringworm may be found over the entire body. Ringworm can be severe in confined animal operations during the winter. Generally, ringworm is less prevalent in the spring and summer.

POTENTIAL TYPES OF RINGWORM:

Ringworm is caused by several different fungus organisms that all belong to a group called "dermatophytes". Different dermatophytes affect different parts of the body and cause the various types of ringworm.

- Ringworm of the scalp: found in humans and animals. Usually begins as a small pimple that becomes larger, leaving scaly patches or temporary baldness. Infected hairs become brittle and break off easily. Yellowish crusty areas may sometimes develop.
- Ringworm of the body: found in humans, animals and soil. Generally shows up as a flat, round patch anywhere on the skin except for the scalp and feet. The groin is a common area of infection (groin ringworm). As the rash gradually expands, its center clears to produce a ring. More than one patch may appear and the patches can overlap. The area is sometimes itchy.
- Ringworm of the foot (athlete's foot): lives only in humans and appears as a scaling or cracking of the skin, especially between the toes.
- Ringworm of the nails: lives only in humans and will cause the affected nails to become thicker, discolored, and brittle, which may become chalky and disintegrate.

Note: Scalp ringworm usually appears 10 to 14 days after contact while ringworm of the skin usually appears 4 to 10 days after contact.

TO LIMIT THE OUTBREAK OF RINGWORM IN LIVESTOCK:

1. Reduce animal density
2. Increase exposure to sunlight
3. Ensure corrals and barns are clean and dry
4. Spray corrals, barns, feed apparatus, halters, grooming equipment, etc. with ESOE – Livestock and Pet Odour Eliminator
5. At the first sign of ringworm (lesions) on animals, commence treatment using ESRW

TREATMENT OF RINGWORM USING ESRW:

1. Simply dilute ESRW at a rate of 1:50 in warm (not hot) water
2. Apply twice per day for a period of 3 to 5 days
3. AIR DRY - DO NOT WIPE OFF

NOTE: Crust should be removed and burned to prevent further contamination.

PACKAGING:

- 1 Litre Jug

ADDITIONAL INFORMATION:

- [Click here for Printable Technical & Application Information \(PDF\)](#)
- [Click here for SDS](#)

If you have any questions please contact us via email at info@earth-smart-solutions.com or at 1-866-444-7174.

This product may not be available in your region; please contact us to find out more.

WHY CHOOSE US?

Safe for the Environment

Our powerful formulations are tough enough for industrial applications yet are also effective for household usage and are safe to use around children, pets and our environment.

Solutions Based on Science

Our product formulations include high grade macro and micro nutrients, plant extracts, amino acids, enzymes, proteins, vitamins, minerals and complex carbohydrates.

TESTIMONIALS

Thank you for all of your assistance with this order. This was my first order with your company, and I'm sure I'll be a repeat customer because of your wonderful service.

– Curtis

The products that I received from Earth Smart took my lawn to the next level. I highly recommend their products to anyone that wants golf course like conditions.

– Dean

YOU MAY ALSO LIKE



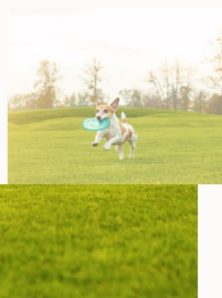
Livestock & Pet Odour Eliminator
from \$60.25



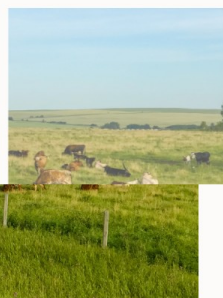
Holding Tank & Field Conditioner
from \$60.25



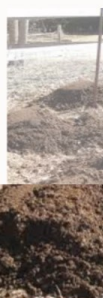
Humic Plus
\$48.75



Lawn Fertilizer
from \$64.50



Surge - Pasture Fertilizer
from \$62.25



Manure Dige Odour Co
from \$60.

[← Back to Livestock Solutions](#)

Join the club

Enter your email



