
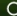


SIGN IN OR CREATE AN ACCOUNT



Home About Us Shop Product Info Blog Contact  



## WASTE WATER TREATMENT - PETROCHEMICAL

\$315.00

Size

10 Kg

Add to cart

Buy it now

### ESWW – WASTE WATER TREATMENT - PETROCHEMICAL

\* 10 Kg size\*

ESWW is a natural formulation for use in treating wastewater containing refinery and petrochemical waste. ESWW degrades extra cellular polymers (which cause foaming) and suppress the growth of the filamentous organisms by affecting the structure of the filaments.

#### BENEFITS OF ESWW:

- Removes oil deposits and prevents scum formation in holding tanks, sewers, drains and aeration basins
- Reduces unpleasant odour emissions associated with oily waste
- Increases the efficiency of overloaded systems
- Reseeds after plant upset
- Enhances organic removal efficiency
- Lowers effluent BOD, COD and TSS
- Accelerates the start-up of new systems and aids recovery after upsets
- Improves cold weather operation
- Aids nitrification by lowering toxicity
- Reduces sludge production
- Protects the environment and lowers operating costs by reducing chemical consumption
- Competes against filaments

#### TYPICAL APPLICATION RATES:

Flow Rate	Initial Dosage	Maintenance**
Up to 1,000 gpd	½ lb. / day for 3 days	½ lb. / week
Up to 5,000 gpd	½ lbs. / day for 3 days	1lb. / week
Up to 20,000 gpd	5 lbs.*	1 ½ lb. / week
Up to 50,000 gpd	8 lbs.*	2 lb. / week
Up to 250,000 gpd	5 lbs.*	¼ lb. / day
Up to 500,000 gpd	25 lbs.*	½ lb. / day
Up to 1 mgd	50 lbs.*	1 lb. / day
Up to 5 mgd	50 lbs. / mgd*	1 lb. / mgd / day
Up to 12 mgd	50 lbs. / mgd*	¾ lb. / mgd / day
Up to 100 mgd	30 lbs. / mgd*	½ lb. / mgd / day

\* Spread this initial dosage out over the course of 10 days.

\*\* Add as regularly as possible. If it is required to miss one day, add that day's product with the next dosage.

#### NOTE:

Application rates will vary with flow rates, retention times and system variations. The rates above are for a typical, well maintained system.

#### ACTIVATED SLUDGE SYSTEMS:

For extended aeration, contact stabilization, step aeration, oxygen activated sludge, etc., application rates are based on the average daily flow rate to the aeration basin, excluding the return sludge stream.

**TRICKLING FILTER & ROTATING BIOLOGICAL CONTACTORS:**

Application rates are based on the average daily flow rate to the filter or contactor, excluding any re-circulating process stream.

**LAGOON SYSTEMS:**

- For aerated lagoon systems, the application rates are based on the average flow to the lagoon.
- For facultative lagoon systems, the application rates are based on the lagoon surface area.

Day 1 through Day 5	2.0 lbs. / acre / day
Day 6+	2 lbs. / acre / week

- For anaerobic lagoons, the application rates are based on the total volume of the anaerobic lagoon

< 100,000 gallons	1 lb. - 2x / week / 5,000 gal.
> 100,000 gallons	½ lb. - 1x / day / 5,000 gal.

**NOTE:**

For lagoons in cold climates, commence program when the water temperature is a least 50 F.

**PACKAGING:**

- 10 kg. (22.2 lb.) HDPE pail – 250 gram (8.8 oz.) Water Soluble Pouches
- 10 kg. (22.2 lb.) HDPE pail – bulk
- 50 kg. (110 lb.) Fibre Drum
- [Click here for Volume Pricing](#)

**ADDITIONAL INFORMATION:**

- [Click here for Printable Application & Technical Information \(PDF\)](#)
- [Click here for SDS](#)

***If you have any questions please contact us via email at [info@earth-smart-solutions.com](mailto:info@earth-smart-solutions.com) or at 1-866-444-7174***

**WHY CHOOSE US?**

**Safe for the Environment**

Our powerful formulations are tough enough for industrial applications yet are also effective for household usage and are safe to use around children, pets and our environment.

**Solutions Based on Science**

Our product formulations include high grade macro and micro nutrients, plant extracts, amino acids, enzymes, proteins, vitamins, minerals and complex carbohydrates.

**TESTIMONIALS**

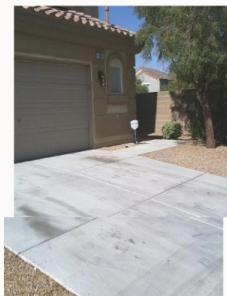
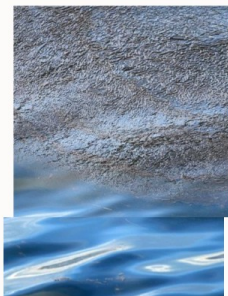
Thank you for all of your assistance with this order. This was my first order with your company, and I'm sure I'll be a repeat customer because of your wonderful service.

– Curtis

The products that I received from Earth Smart took my lawn to the next level. I highly recommend their products to anyone that wants golf course like conditions.

– Dean

**YOU MAY ALSO LIKE**



Hydrocarbon Degradar - Soil \$295.00	Sump Cleaner from \$315.00	Micro Nutrient Bio- Stimulant from \$60.25	Hydrocarbon Cleaner / Degreaser - ESHC from \$52.00	Hydrocarbon Degradar - Water \$295.00
--	-------------------------------	--	---	---

[← Back to Oil / Hydrocarbon Solutions](#)

Join the club

Enter your email



[About Us](#) [Shop](#) [Product Info](#) [Blog](#) [Contact](#)