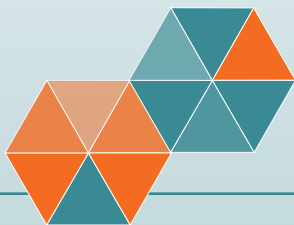


The Fujifilm ED-580XT Duodenoscope



Access More



The Fujifilm ED-580XT Duodenoscope combines optimal visual orientation with exceptional maneuverability and control, helping to achieve cannulation efficiently while keeping the focus on diagnosis and therapy even in the most challenging Endoscopic Retrograde Cholangio-Pancreatography (ERCP) procedures.



Exceptional Maneuverability.

The Fujifilm G7 scope grip is ergonomically designed to provide enhanced comfort with a rounded handle surface, enabling intuitive operation. The angulation of the buttons and knobs on the scope handle provide pressure relief, which are intended to minimize hand fatigue, optimize procedural performance, and provide more control at the distal tip.



Smooth Working Channel.

A 4.2 mm working channel allows for smooth device passage and exchange.



The ED-580XT Duodenoscope.

Developed in collaboration with endoscopists, the Fujifilm ED-580XT Duodenoscope is designed to address challenges associated with access, exploration, and treatment of diseases in the biliary system.





Improved Access for Cleaning.

The ED-580XT Duodenoscope features a removable single use distal end cap which provides easy access during cleaning, as well as a sealed elevator mechanism which prevents bioburden build-up on and around the elevator wire.



The distal end cap is designed with an installation groove for simple placement pre-procedure and secure attachment during use.



Once the single use distal end cap is removed, the elevator mechanism is easily accessible with the cleaning brushes for thorough manual cleaning.



Precision and Control in Cannulation.

From the visual orientation and field of view, to the elevator movement, the ED-580XT Duodenoscope provides the precision and control necessary during cannulation.



Elevator Responsiveness.

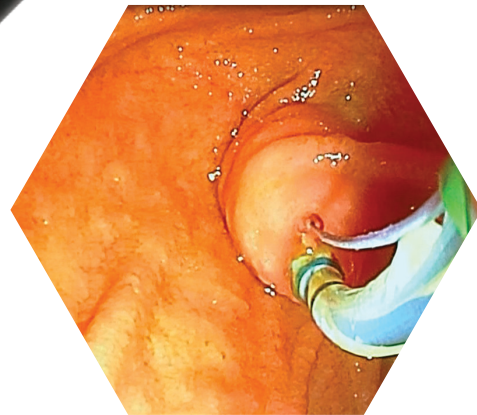
Movement of the elevator lever at the control knob directly translates to the elevator responsiveness, allowing for smooth, precise positioning of instruments.



G-Lock

Guide Wire Lock.

The ED-580XT G-Lock™ guide wire lock can hold multiple .035 guide wires securely in place, enhancing procedural efficiency.



Optimal Viewing Angle.

Consistent with US physician preferences, the camera lens is positioned to provide an optimal 5° rear viewing angle and field of view so focus can stay on instrument positioning for successful cannulation.



Processor Technology.

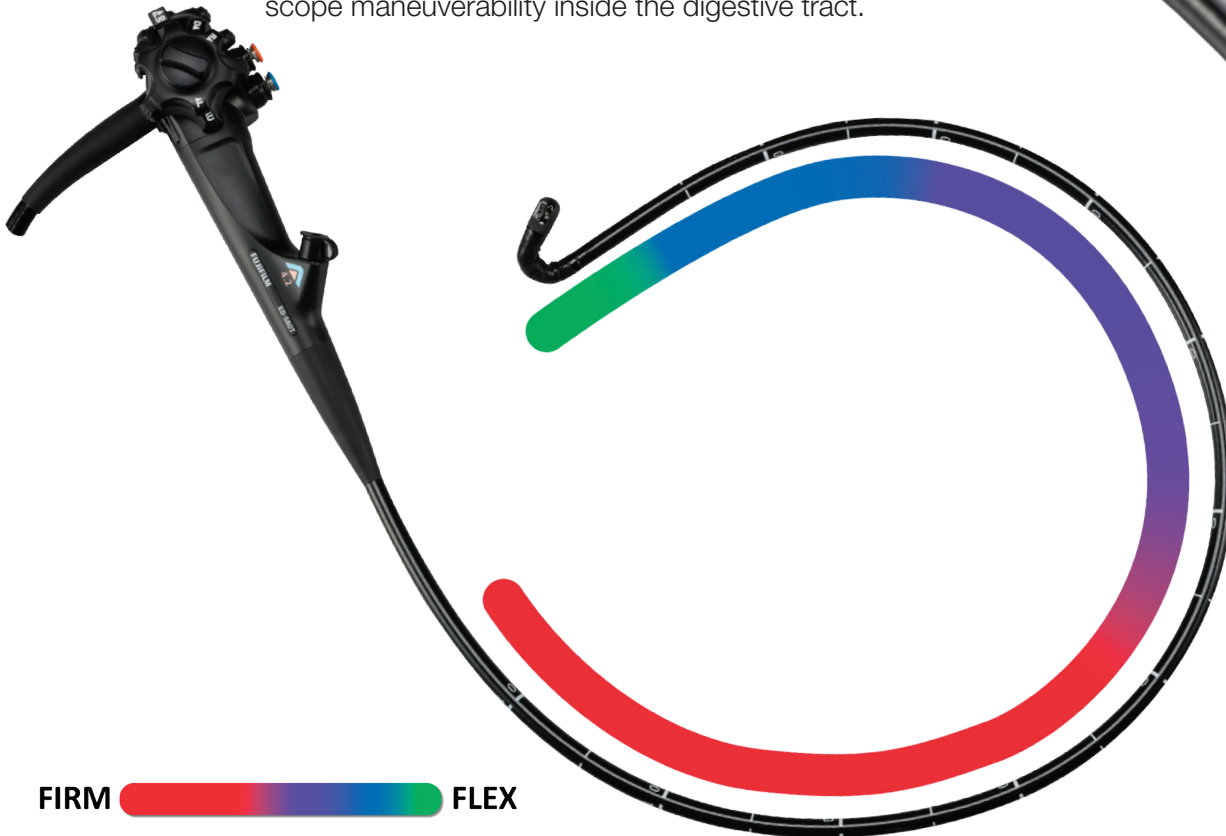
The ED-580XT Duodenoscope is compatible with the ELUXEO Endoscopic Video Imaging System. ELUXEO's innovative 4-LED Multi-Light illumination technology creates high quality images, with videos displayed in full HD.

Additionally, the ED-580XT Duodenoscope is compatible with the Fujifilm VP-4440HD processor to ensure compatibility with existing systems.



Advanced Force Transmission.

The design of the inner tube of the ED-580XT Duodenoscope allows a gradual firm to flexible taper, which provides advanced force transmission to maximize scope maneuverability inside the digestive tract.



FIRM  **FLEX**



Your Reliable Partner for Service and Support.

Your ED-580XT Duodenoscope comes with the assurance of a cost-effective, easy-to-use and maintain system backed by a partner with industry-proven reliability and support. Fujifilm values its partnership with customers, ensuring service and support that's expert, reliable, fast, and efficient from purchase through needed scope repairs for the life of your product – because improved outcomes are achieved with a partner that Gives You More to help optimize your performance.

ED-580XT Duodenoscope Specifications

Scope Category	Therapeutic (ERCP)
Model	ED-580XT
Viewing Direction	5° Retro Viewing
Field of View	100°
Observation Range	4-60 mm
Distal End Diameter	13.1 mm
Flexible Portion Diameter	11.3 mm
Instrument Channel Diameter	4.2 mm
Working Length	1250 mm
Bending Capability (Up/Down)	120°/90°
Bending Capability (Left/Right)	90°/110°
Distal End Cap	Single use, Disposable

Ordering Information

Part Number	Description
16606600	ED-580XT Duodenoscope with Disposable End Cap and Fujifilm G-Lock™ Guidewire Lock
16606612	DC-07D Disposable End Cap for ED-580XT (10/pack)

For more information, contact your Fujifilm representative today. To order, call 800.385.4666. www.fujifilmendoscopy.com