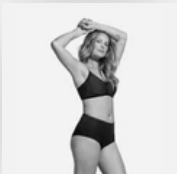
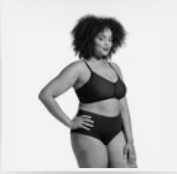


< Buy one item, take 20% off the rest of your order >



ADJUSTABLE LIFT

Silhouette Bra

★★★★★ 202 Reviews

\$64 SAVE \$12 ON YOUR SECOND ITEM

COLOR: VAMP



SIZE: -

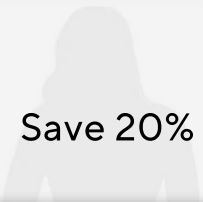
- XS
- S
- M
- L
- XL
- 1X
- 2X
- 3X

Sizing Help

ADD TO BAG



Save 20% on your second item



Save 20%

Courtney, XL

Alex, Medium

START A BUNDLE

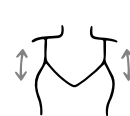


CORE FEATURES

The Silhouette Bra is just as beautiful as it is supportive. Soft, velvet piping provides extra reinforcement on the side and center panels. No need for underwire here – bonded bust support keeps you lifted. Thin, adjustable straps and hook and eye back closure let you customize your fit.



Bonded support



Adjustable straps



Wire-free

FREE SHIPPING OVER \$75



FIT RECOMMENDATIONS



FABRIC DETAILS



FREE RETURNS



The New York Times

COSMOPOLITAN

GOOD MORNING AMERICA

ELLE

BRIDES

What our customers are saying:

★★★★★ 202 Reviews

Mirna A.

Stylish feel

Verified

buyer

★★★★★

I don't like wearing bras that have underwire but unfortunately most of them are not flattering and don't look youthful. This bra gives you a sexy/stylish feel without being too much.

Jessica R.

Nice to wear

Verified

buyer

★★★★★

I always had issues finding a bra that is comfortable and looks great.this one is checking those boxes for sure!

Diane C.

The velvet is niice

Verified

buyer

★★★★★

I didn't want to try one more bra and be dissappointed, is not the case very comfortable and sexy style. Love the velvet soft touch.

Jocelyn A.

So pretty

Verified

buyer

I love the design and the velvet detail, very youthful and comfortable as well.

★★★★★

Marie S.

Just arrived

Verified

buyer

I'm still trying out the bra but it has been great.

★★★★★

< **1** 2 3 ... 39 40 41 >

OUR PICKS FOR YOU

LiftWear **Cami**

Crossover **Bra**

Cami **Body**suit

Adjustable support

Stylish support

Smooth and lifted

Boldness Tank

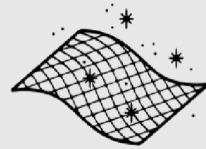
Sculpted and stylish

WHY HONEYLOVE



Fit obsessed

Before launch, every product goes through 1-2 years of rigorous testing with real women who want more from their clothing.



Impeccable quality

We take the needed time to source the softest, most durable, performance fabrics for you to feel great wearing them.



Size inclusive

We strive to serve as many different body shapes and sizes as possible so everyone can find their perfect fit.



Hassle-free returns

Enjoy free US shipping and a 30-day hassle-free return policy. Our customer service is here to help.

[Learn more](#)

Join our community

Enter your email	SUBSCRIBE
------------------	-----------

or you can simply follow us



Support

- Contact us
6am to 6pm Pacific every day
- Returns + Exchanges
- Sculptwear Quiz
- How to wear
- Schedule a fit consultation
- FAQ
- Frontline worker discount
- Military discount

- Accessibility Statement
- Cookie settings

Shop

- All products
- Sculptwear
- Tops
- Bras
- Leggings/Pants
- Bodysuits
- Underwear
- Sale
- Gift Cards
- Loyalty Program
- Referral Program

About Honeylove

- Our Story
- Blog
- Reviews
- Affiliates

