



**WESTERN**

**STEEL BUILDINGS**

Western has you covered.™

**YOUR SOURCE  
FOR STEEL BUILDINGS**

---

SPECIALIZING IN PRE-ENGINEERED AND STRUCTURAL BUILDING SYSTEMS



# THE WESTERN WAY

---

At Western Steel, we continue to develop value-added solutions for our clients, from framing alternatives to advanced panel options and more. We are committed to leading our industry with innovative products, outstanding customer service, and a team of highly skilled professionals.

Our SolutionCentric™ system creates maximum opportunity for project efficiency in every facet of your building needs. Our dedicated Account Managers will assist with all aspects of production by coordinating the design, engineering, fabrication, and delivery of your custom-engineered building kit. We ensure superior quality and the quickest, easiest onsite assembly. Our SolutionCentric™ approach provides a more efficient construction project from start to finish, resulting in solutions that are on time and within budget.

Guaranteed on-time delivery, superior customer service, extensive design options and proficient supply chain management have made Western Steel the smart choice for your next project. With multiple factory affiliates throughout North America and a proven logistics team specializing in motor and ocean freight, we are your source for steel buildings around the globe.



# GREEN RIVER FIRE STATION

---

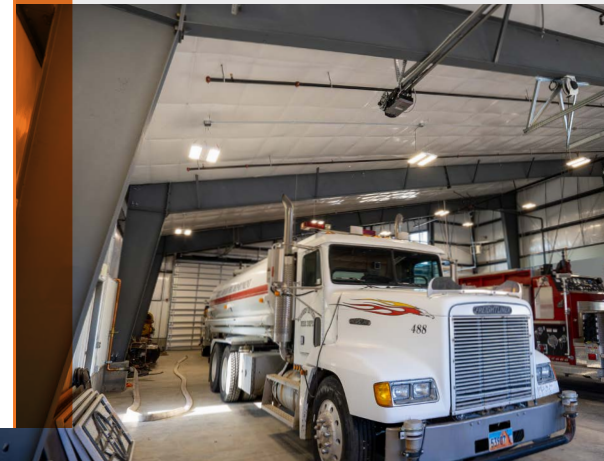
## GREEN RIVER, UTAH

Our Western Steel building systems can be adapted to any design. The Green River Public Safety Building is a prime example of our versatility. With five building attachments, this attractive structure surpasses 12,000 square feet. As a public safety building, utilized primarily to house fire trucks and ambulances, it is classified as a Risk Category IV-Essential Facility.

When a building is placed into this risk category, careful assessment of rigorous design codes are required. These buildings are meant to weather the storm, built to withstand natural disasters, and maintain a safe place for essential services to continue to the public after a catastrophe. Other examples of essential buildings include police stations, hospitals, and storm shelters. These are all designed to minimize fire hazards and maximize seismic resistance.

This building was designed with a variety of aesthetic features, incorporating single slope primary frames with overhangs to create a sleek, modern look. The exterior cladding is a mix of PBR panel and brick.

- 12,000 Square Feet
- Pre-Engineered Steel Building System
- Five, Tapered, Single Slope Attached Buildings
- Exposed Fastener Metal Panel and Brick Facade Exterior
- Panel Colors: Charcoal, Polar White
- Emerald Green Cantilever Canopies
- Custom Trimmed Openings
- 3:12 Roof Pitch





Essential facility designed to minimize fire hazards and endure natural disasters.



**MUNICIPALITY**



Our custom-engineered structures provide architects and designers unrivaled flexibility. For an immersive video spotlight scan the QR code:





# BIG ISLAND GROWN

---



Video  
Spotlight



## HILO, HAWAI'I

Completed in 2018, Big Island Grown has adapted environmentally sustainable business practices, utilizing solar on the roof and hydroelectric to power the facility. These sustainable practices helped them achieve a net zero-energy footprint! This attractive and sleek two-story structure measures 100'x175'x32'. Big Island Grown worked with the team at Western Steel in the preliminary phase to incorporate a variety of features such as a mezzanine level, solar array, and insulated metal panels. The integration of a full footprint mezzanine brings the square footage to 35,000. Our team was ready to provide fast accurate answers to deliver a comprehensive SolutionCentric™ building package.





“Nestled between the mountain and the sea, our 35,000 square foot, purpose-built production facility uses innovative techniques and technology to provide premium and sustainable, indoor-grown medical cannabis for our community. Using clean room protocol, climate control technology and strategic construction allows us to grow without the use of herbicides, pesticides or fungicides.”

-Dylan Shropshire, Chief Executive Officer of Big Island Grown



### SOLAR

Metal buildings tend to have a low roof pitch and significant surface area, this makes them ideal for solar panels and retrofit solar additions. An investment in solar will return 10-15% a year for the life of the system. Choose solar to reduce power costs through renewable energy and decrease your carbon footprint.



### INSULATED METAL PANELS

IMPs are ideal for variety of building applications and provide several advantages over concrete, fiberglass, and drywall. Benefits include a weather-tight thermal envelope, superior energy efficiency, anti-microbial properties, and a non-porous washable surface.



## INDUSTRIAL

40,000 Square Feet  
Dimensions: 80'x502'7"x23'/30'  
Clear Span, Tapered Single  
Slope Frame System  
PBR Roof & Wall Panel  
Structural Trimmed Openings  
1:12 Roof Slope

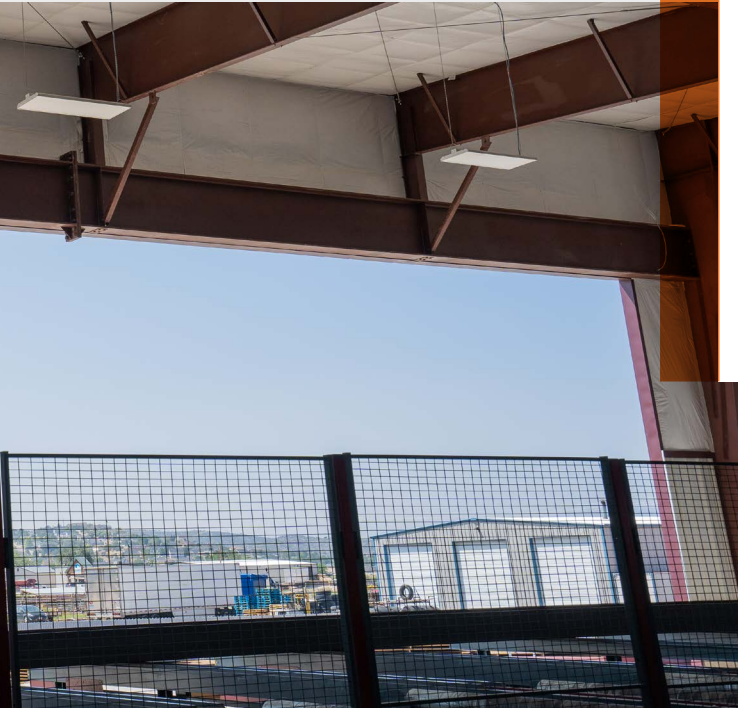
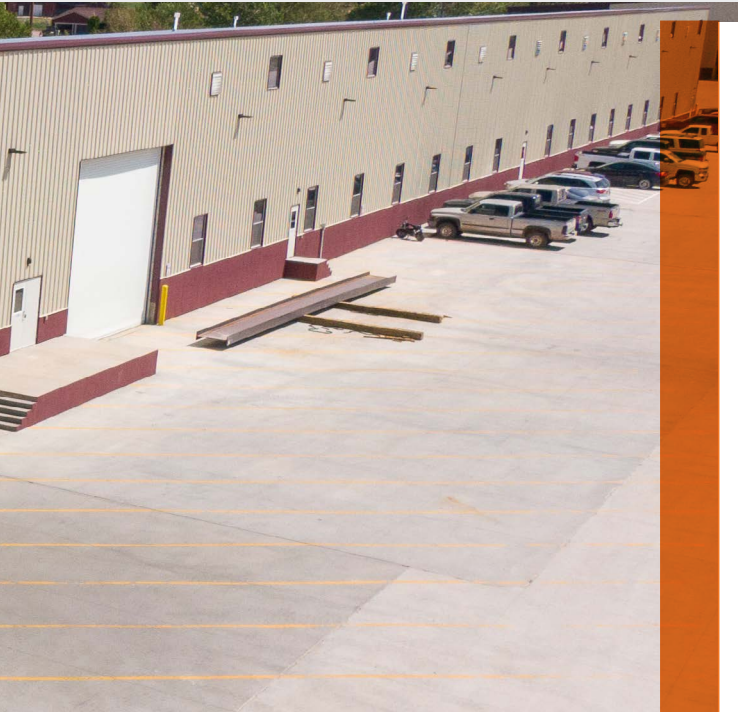


Video  
Spotlight

## 72'x20'6 Sidewall Opening







# REALINE STEEL

## CEDAR CITY, UTAH

At Western Steel, we innovate complex and adaptable steel buildings for sophisticated projects. When Realine Steel, a division of Building Zone Industries, outgrew their old facility and needed to upgrade their beam processing machine to optimize workflow and increase production, the team at Western Steel took a creative engineering approach.

The result, a state-of-the-art, skillfully designed clear span facility to house the large beam processing machinery, complete with a 72'x20'6" trimmed structural opening located in the front sidewall to ensure easy loading of the fabricated beams. Since moving into the new structure, Realine Steel has been able to automate and monitor beam processing in real-time, allowing for increased production and a stellar return on investment.



"Western Steel Buildings was great to work with, Ben & Wes, everyone was super."

-Vergel Steed, Building Zone Industries & Realine Steel Construction Manager

# CONTACT CLIMBING

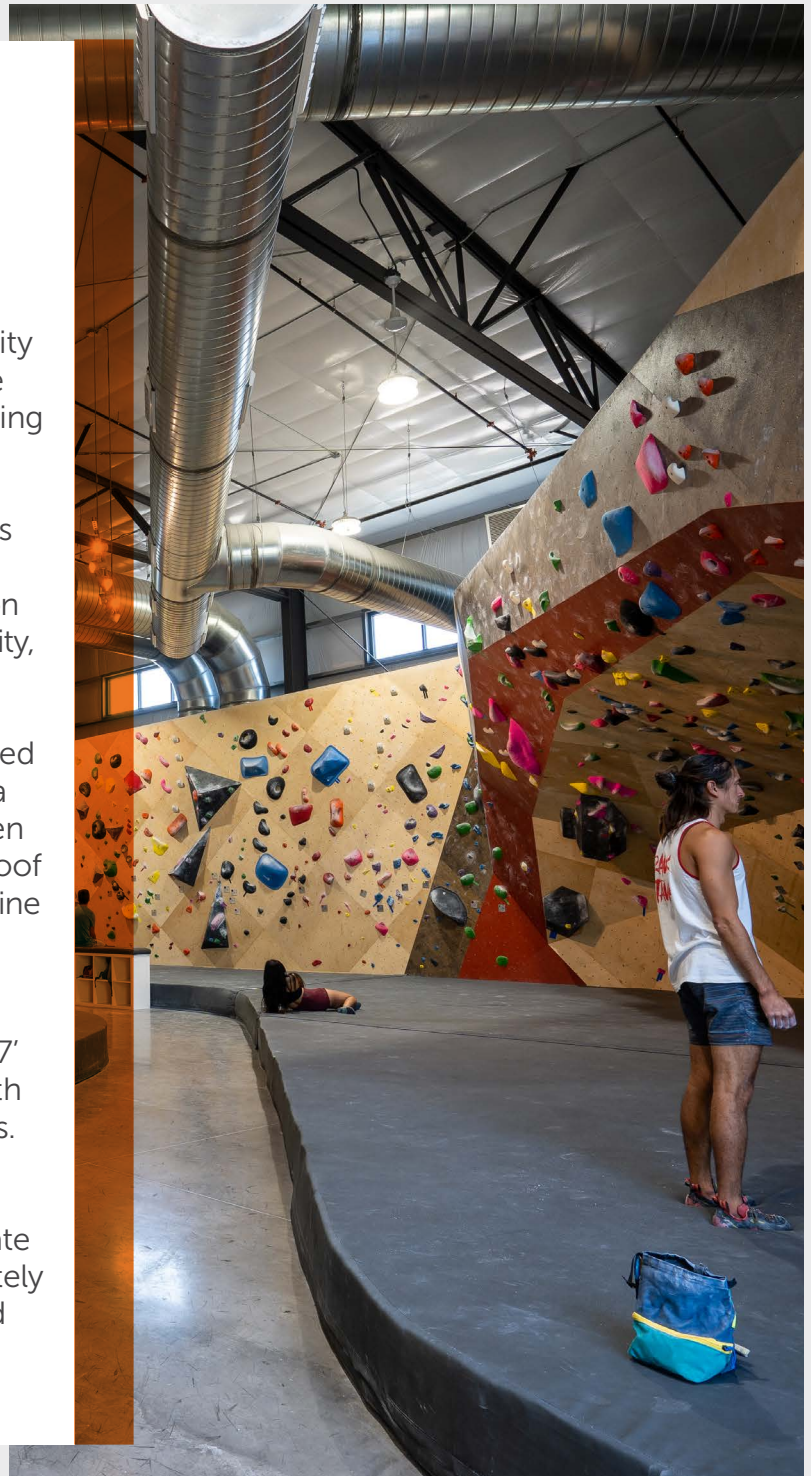
---

## ST. GEORGE, UTAH

At Western Steel, we demonstrate the necessity for creativity and innovation based on real life experiences with our diverse portfolio of building projects. When the team at Contact Climbing were in the planning phase for their new facility, they explored the benefits and options of steel construction. Ultimately, a structural steel system by our team at Western Steel won over all other methods in terms of design flexibility, durability, construction time and cost.

Co-founders Jenny and Jeff Compas partnered with Chris and Jacquelyn Horton to achieve a structural steel building that incorporates open web trusses with support columns, multiple roof lines ranging from 26'7" to 59'0", and a mezzanine N-Deck floor system.

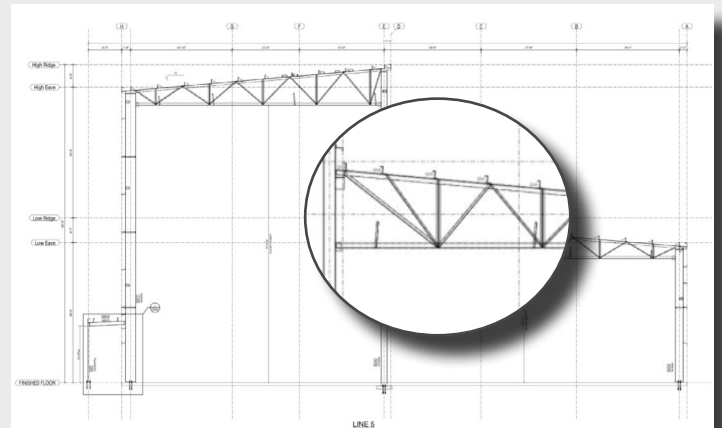
There are two different styles of climbing, a bouldering area with walls measuring 14' to 17' high, and a 15,000 square foot roped area with 52' climbing walls designed by Vertical Solutions. The team at Western Steel ensured project continuity from concept to completion, working directly with Vertical Solutions to create a detailed model for their engineers to accurately design the climbing walls. Point loads were added into the system to attach the climbing walls onto the open web trusses for support.







Co-founder Jeff Compas said the club is, "A place we want to make very welcoming, and a place where people can come to train... and be together with like-minded people."



- 20,000 Square Feet
- Structural Steel Building System
- 59' Tall Open Web Trusses



Video  
Spotlight



**BLACKSTAR  
DHS, CALIFORNIA  
200,000 SQUARE FEET  
PREFAB STEEL BUILDING  
IMP WALL**

A unique, state-of-the-art facility. Building one is 60,000 SF designed for extraction, testing, and distribution. Building two is 140,000 SF specifically designed for State of California 2A and 3A cultivation licenses. Shell combines IMP walls with a Standing Seam Roof system.



Video  
Spotlight





**EPIC RV  
HELPER, UTAH  
20,000 SQUARE FEET  
PREFAB STEEL BUILDING  
PBR ROOF & WALL**

This 80'x240' single slope multi-use commercial building was designed with a parapet wall for maximum roadside signage and curb appeal. This structure utilizes the economical application of PBR roof and wall panels combined with our R-38 insulation package.



Video  
Spotlight







AGRICULTURE/CULTIVATION- HAPPY HOURS LLC



EQUESTRIAN - THE REMUDA AT THE LODGE AT BLUE SKY





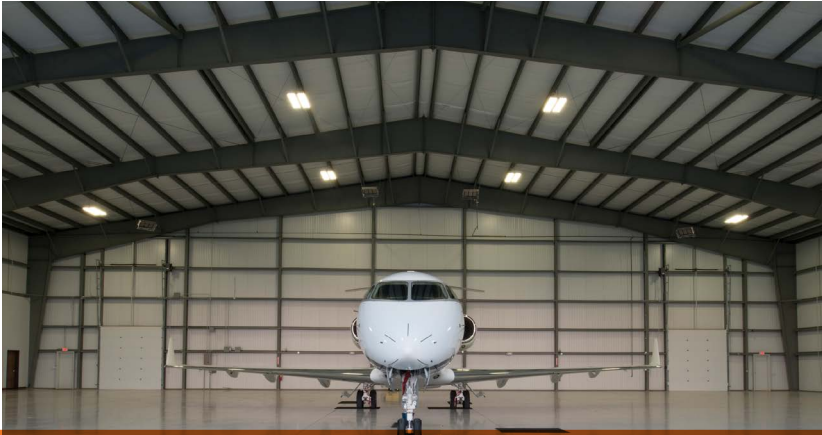
SHIPPING FACILITY & WAREHOUSE - DUTCH GOAT AUCTIONS



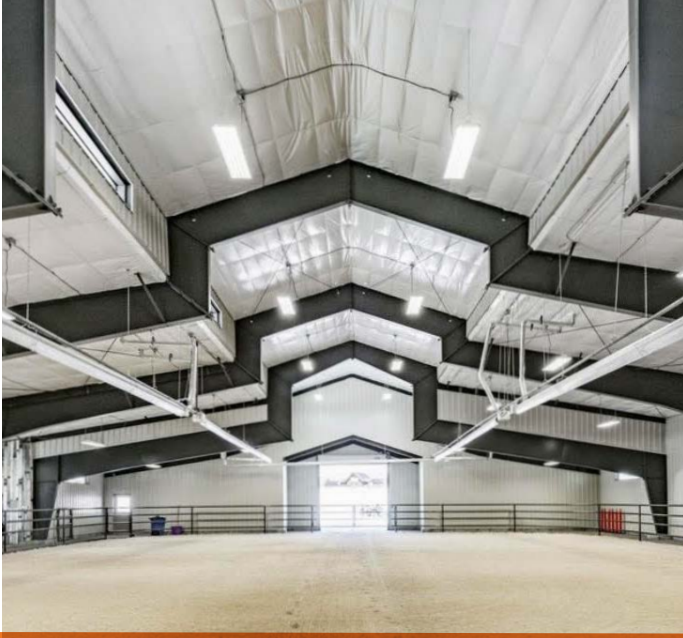
RECREATIONAL FACILITY - SANDBAR LLC



COMMERCIAL OFFICE BUILDING - GATEWAY CENTER



AVIATION - HEBER VALLEY AIRPORT



EQUESTRIAN - SILVER CREEK RIDING ARENA

# WESTERN HAS YOU COVERED.™

---

## **COST-EFFECTIVE**

On average, a Western Steel building system can cost up to 30% less than other construction methods.

## **FASTER INSTALL TIMES**

Factory precision results in simplified construction; all components are cut and drilled at the factory to ensure a fast assembly.

## **EASILY EXPANDABLE**

Adding onto a Western Steel building system is easily achieved.

## **FLEXIBLE DESIGNS**

To create ideal building solutions, design flexibility is crucial. We offer a variety of steel framing options including prefabricated I-beam, structural I-beam, and web truss rafters to adapt to any application.

## **DURABLE AND MAINTENANCE-FREE**

Steel is strong, durable, and fully recyclable. It's well suited as an essential building material, impervious to termites or decay. We build to meet or exceed engineering code requirements per location, such as tectonic shifts/high seismic activity, heavy snow, hurricane-force winds, and more.



## Framing Options

### **PRIMARY FRAMING**

Primary frames are designed for full bay loading and span the width of a building. Western Steel framework can be open web or I-beam. Frame systems include clear-span, multi-span and lean-to frames in tapered or straight. Each steel frame system is custom engineered to meet your specifications and local building codes.

### **CLEAR SPAN FRAMES**

Clear span frames are column-free interiors that provide the space required for material handling and crane systems. Common uses include warehouses, manufacturing facilities, aircraft hangars, arenas, and indoor sports complexes.

### **MULTI-SPAN FRAMES**

Multi-span frames are large open floor spaces that are accommodated by using the minimum number of columns. Common uses include manufacturing plants, warehouses, and retail stores.

### **LEAN-TO FRAMES**

A lean-to frame typically has a single slope profile and straight sidewall columns and must be supported by an attachment to another frame.





Exposed  
Fastener  
Roof & Wall  
Systems



Standing  
Seam Roof  
Options



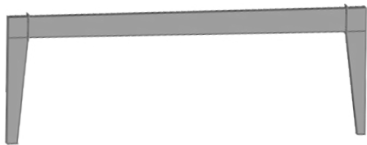
Accessories



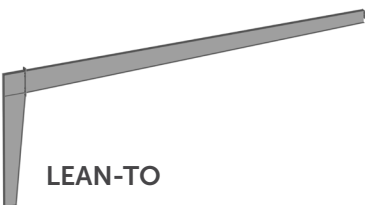
**GABLE CLEAR SPAN**



**GABLE MULTI-SPAN**



**SINGLE SLOPE CLEAR SPAN**



**LEAN-TO**



### WALL SYSTEMS

Western Steel offers a large selection of metal wall panel systems with both single skin and insulated, that can be utilized in several different applications, including exposed fastener, concealed fastener and interior wall liners. Our exposed fastener metal panels are a cost-effective investment with benefits that include energy-saving technology, minimal maintenance requirements, and strong resistance to the elements.

### ROOF SYSTEMS

Western Steel also offers a large selection of metal roofing panels with both single skin and insulated, that can be utilized in several different applications, including standing seam, concealed fastener and exposed fastener panels. Our standing seam roof options offer superior performance and weather-tight benefits.

## MODEL LINEN - INDUSTRIAL LAUNDRY & LINEN SUPPLY



Scan the QR code to experience how IMPs and Western Steel shaped the new addition to the Model Linen Industrial Service facility.



## INSULATED METAL PANELS

Advancements of Insulated Metal Panels (IMPs) for steel building envelopes have made them a leading choice for architects and designers, pioneering new possibilities for the future of construction. IMPs provide superior energy efficiency. This innovative option coupled with our framing flexibility to adapt to a range of utility capacity requirements, has elevated Western Steel structures into the optimal building solution.

IMPs provide a secure thermal envelope with a weather-tight, tongue and groove joint, and insulated foam core. This results in maximum R-Values and reduced energy and operating costs. IMPs are modern and sleek with many profiles and color options for the roof, wall, and interior applications. IMPs combine a finished interior liner, factory-applied vapor shield, polyisocyanurate core, and exterior covering into a single cladding unit. IMPs serve as an exterior rainscreen, air and moisture barrier, and thermal insulation that reduces mold and corrosion. The composite action resulting from a chemical bond between the foam core and steel skins creates a lightweight, rigid unit with exceptional spanning capacity. Their lightweight nature also allows an easier and much faster installation without heavy equipment.





**IMP Standing Seam Roof Sample**



**IMP Wall Sample**

## AVAILABLE FOR ROOF AND WALL APPLICATIONS

**Applications:** Cold Storage, Institutional, Commercial, Industrial, and Architectural. Panel thickness, profiles, and finishes vary by usage.

**Fire Ratings:** Available in ratings from one to three hours. Made with a non-combustable structural mineral wool core.

**Seams:** Can be installed vertically or horizontally. Overlapping joint is self-aligning and allows for easy sealant application.

**Appealing:** IMPs offer a clean, consistent and high-quality appearance that immediately adds value to any building.

**Panel Thickness:** IMPs are between 1 and 6 inches thick, with roof applications using thicker panels than walls. Core is made of CFC-free polyisocyanurate foam.

**Size:** Typical modules are sized at 24 inches, 30 inches, 36 inches, and 42 inches with lengths from 8 feet up to 52 feet.

**Antimicrobial:** Clean and non-porous washable surface. IMPs are pharmaceutical grade.

**Profiles:** IMPs come in smooth, ribbed, textured and standing seam for roof systems.

**Steel Surface:** Standard exterior and interior steel surface is 26-gauge, with 24-gauge and 22-gauge optional for some profiles.

**Easy Install:** IMPs remarkable light weight reduces structural requirements and installation costs.

**R-Values:** Options available from 20-48.

**Substrate:** G90 galvanized steel, stainless steel, aluminum zinc alloy coated steel (50% and 55%) and aluminum for both interior and exterior facings.

# **WESTERN**

## **STEEL BUILDINGS**

Western has you covered.™

“

“The building went up really quickly... and we had a large infrastructure build out once the structure was complete, so to have the ability to get in there fast was nice. Western Steel was great, the price was competitive, most importantly it showed up when it was supposed to and went together really easily. It was a good experience, I would definitely use them again.”

-Matthew, Owner of Model Linen

“

“We purchased an 80'x60' foot steel building from Western Steel this year. Our building arrived on time as promised, came with all the parts promised, and we had absolutely no issues! Our building is beautiful!! Also, it had barely been up a week when we got 80 mile an hour winds and we had no issues. We would definitely purchase from them again!”

-Jeanne, Owner of High Adventure Rentals

1441 W. Ute Blvd., Suite 360  
Park City, Utah 84098  
435-565-6882

409 E. Cook Rd., Suite 120  
Fort Wayne, Indiana 46825  
260-370-0191

2911 Kaihikapu St.  
Honolulu, Hawaii 96819  
800-763-0461

**WESTERNSTEEL.COM**