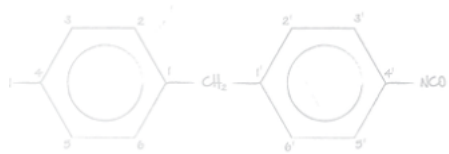


Urethane Sciences

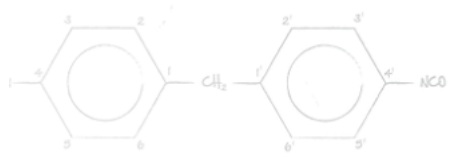
TRADEMARK PROOF OF USE FILE

URL LINK TO WEBSITE UNDER CONSTRUCTION

<https://usci.demosrv.co/portfolio/viscoelastic-foams/>

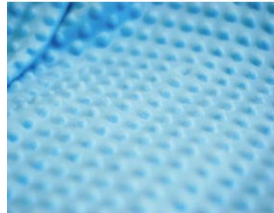
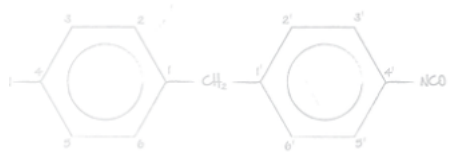


BRANDS



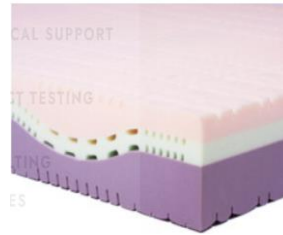
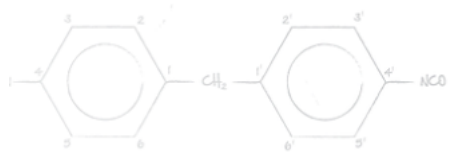
USCI > VISCOELASTIC FOAMS

VISCOELASTIC FOAMS



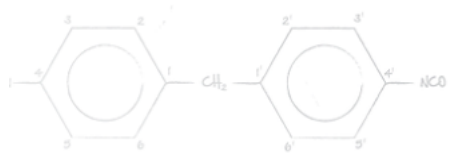
REVIS® viscoelastic memory foam has been reinvented to help you address your sleep products of tomorrow....today! We took a traditional memory foam material and made it better to address today's consumer trends and product performance needs. This less temperature sensitive memory foam material with its enhanced pressure relieving properties is perfect for any style sleeper. **REVIS**® is your perfect solution for expanding your sales with data driven results that help produce 5 Star reviews.





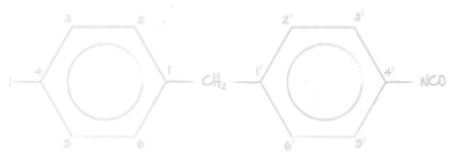
DYNAVIS[®] viscoelastic memory foam is your alternative solution to creating a more responsive feel to your memory foam product application. This specially formulated memory foam material has a hybrid like feel that was designed to address consumers looking for pressure relief with a livelier recovery rate. **DYNAVIS**[®] viscoelastic memory foam is perfect for hybrid mattress designs for companies looking for that unique combination of comfort and support to help expand their product assortments.



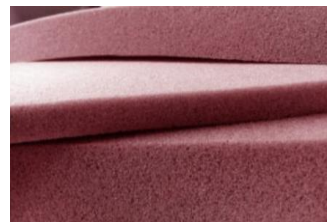
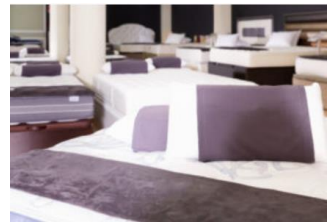


USCI > HIGH ENERGY FOAMS

HIGH ENERGY FOAMS

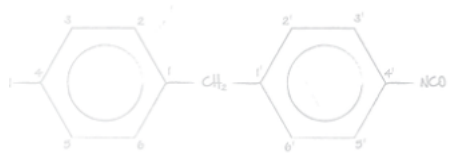


ReJuvitex



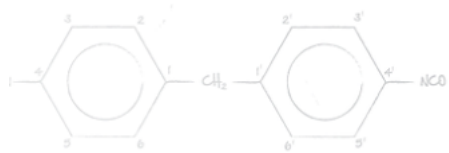
REJUVITEX® is your livelier more energized memory foam that helps deliver an expanded alternative comfort option to your traditional viscoelastic memory foam sleep product offerings. This specially engineered foam still maintains the exceptional pressure relieving and reduced motion transfer properties of a memory foam while helping to eliminate that sink too deep feel that some consumers find objectionable. Incorporating **REJUVITEX®** into your sleep product designs will expand sales opportunities by expanding comfort options for your customers that will lead to increased customer satisfaction rates.





USCI > SPECIALIZED FOAMS

SPECIALIZED FOAMS

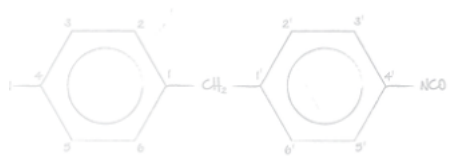


USCI > THERMAL CONDUCTIVE FOAMS

THERMAL CONDUCTIVE FOAMS

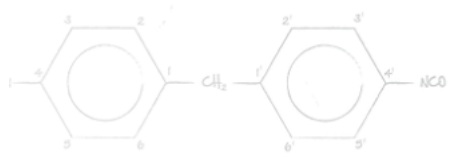


PROPERTY OF URETHANE SCIENCES / CONFIDENTIAL / SHARED UNDER NDA



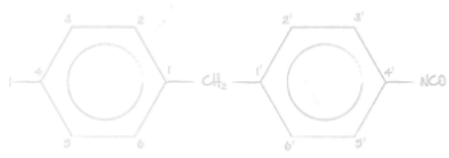
USCI > GELS

GELS



USCI > PCM'S & COOLING

PCM'S & COOLING

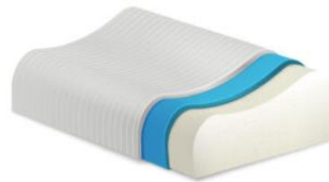
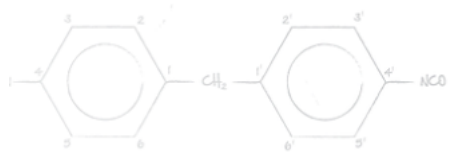


nfusion



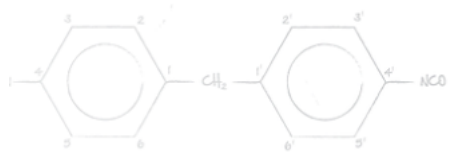
NFUSION[®] is a cutting-edge state of the art technology that offers unprecedented cooling capabilities to your foam. The patent pending technology infuses a proprietary PCM formulation throughout the foam that extends the ability of the foam to prolong the cooling effect. **NFUSION**[®] creates maximum cooling performance in your foam helping to promote increased consumer appeal with your mattress and topper product designs.



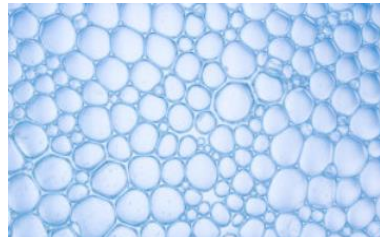


NANOCOOL® is a comprehensive collection of PCM technology solutions that can be custom created to better address your specific application needs. **NANOCOOL®** is available in both water based and solvent based formulation processes that help deliver exact performance and processing requirements. Looking to outperform the competition when it comes to sleeping cool? **NANOCOOL®** is your answer.





Cooluminate



COOLUMINATE is a specially formulated foam with PCM technology that contains proprietary ingredients that help to enhance the “sleep cooler” effect with your foam pillow, topper and mattress applications. **COOLUMINATE** technology is typically applied to the foam and will not wash out and is an ideal solution for your premium pillow, topper and mattress designs of the future.