

SPECIMENS

MARK: PHENOM

APPLICANT: Skayl, LLC

BUSINESS ADDRESS: 400 N Center St #177, Westminster, MD 21157

To be submitted:

Screenshot images of Applicant's websites, showing the applied for mark in association with its services being provided under the mark.

Accessed September 9, 2021.

Website Links:

<https://www.skayl.com/products-services>

https://31074e2e-fc50-4495-96b8-4aeaacab7e11.filesusr.com/ugd/85fa4c_c10be3db9b814962bcbf66767e934ab4.pdf

<http://www.phenomportal.com/>



PRODUCTS & SERVICES

passion-driven innovation in rapid, mission-critical integration

PHENOM™

CinC™

consulting

training



The PHENOM™ ecosystem contains a collection of collaborative integration tools as well as large, robust, pre-built conformant data models. PHENOM makes integration, maintenance, and extension accessible and intuitive.

NAVIGATION model modes, searching, advanced filtering, and saved filters enable advanced navigation through text or graphic representations	VISUALIZATION unique visualization tools for understanding models and shared interconnectivity among views & messages	MODELING guided modeling and editing designed to be simple and intuitive
SEMANTIC GUIDANCE semantic matching helps guide decision-making during design and analysis	COLLABORATION branching, dynamic merging, differencing, and collaborative data modeling	DIAGRAMMING familiar representations available for workflow and reporting
VALIDATION model validation and conformance to various standards	ARTIFACT GENERATION artifacts can be generated in several formats compatible with popular integration tools and artifact templates can be edited and created	AUTO-INTEGRATION model upload, alignment, and automatic generation of integration code takes only minutes

[Product pricing sheet](#)

CinC



inquiries@skayt.com
Westminster, MD | Scottsdale | Boston
410.848.4946

Packages & Pricing

2020 Pricing Guide

PHENOM™ PACKAGES

PHENOM makes the integration and maintenance of large Systems of Systems manageable, scalable and more cost effective. PHENOM is a collaborative data modeling ecosystem includes easy-to-use data architecture tooling along with Hyper-Models that automatically track changes and impacts over time.



PHENOM for the data modeler:

- 12 months with remote tool support
- Use of commercially available Hyper-Models
- Model Browsing, Editing, Refactor, and Creating
- Collaborative Model Editing
- Model Analysis, Tracing, and Diagnostics
- Model Export, Transform, and Formatting
- Knowledgebase user support center

\$999 per month per user

All the benefits of Modeler, plus:

- 8 user licenses *
- CinC (Configurable infrastructure Capability) with Code Generation
- Editable templates to support standards interfaces including FACE 3.0, FACE 2.1, OMS, and more.
- Support for TPMs including DDS, UDP, AMQP, Multicast (Raw), TCP (Raw) and more
- Support for topologies including Pub-Sub, Request-Response, Query-Broker, Point-Point, etc.

\$14k per month[†]

All the benefits of Basic, plus:

- 16 user licenses *
- Prioritized issue resolution
- Phone, Video, and Screen Sharing support
- Bi-annual custom training^{††}

\$19k per month[†]

All packages are one-year subscriptions. Enterprise installation options are available upon request.

* Additional users may be added at \$999 per user per month.

[†] Training required for all first time PHENOM subscribers to include 3 days on-site with 2 instructors. Travel included. 1 Day PHENOM Tool Training and 2 Days Data Architecture Training. \$18,200 (CONUS) or \$22,200 (OCONUS)

^{††} Training will be customized to the client's needs and provided in a virtual one-hour format twice over the annual subscription period

WWW.PHENOMPORTAL.COM



Your portal to an integrated world



OUR TECHNOLOGY

01 / RESILIENT

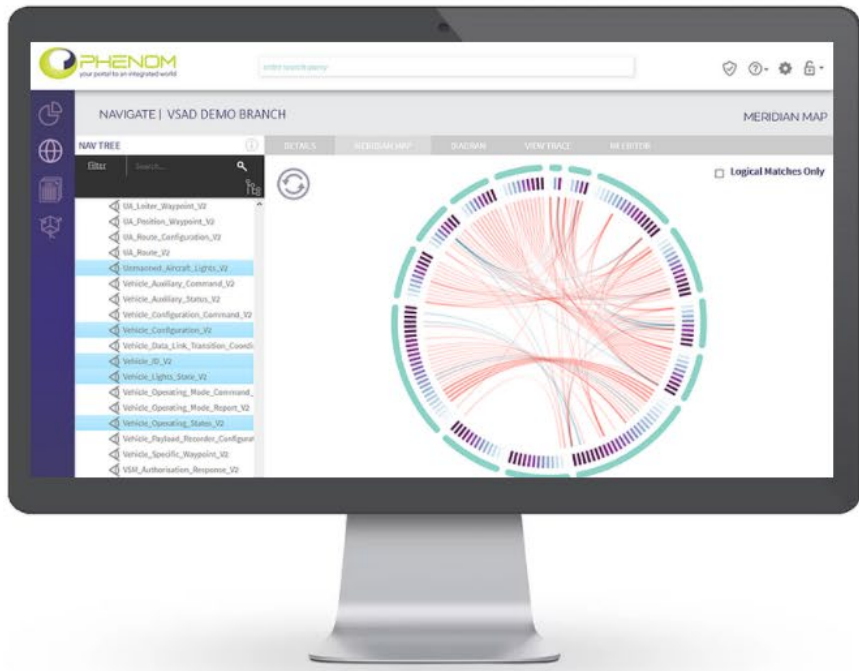
PHENOM™ has been uniquely developed to provide resilience, scalability, backwards and forwards compatibility, such that systems organically adapt to updates, new versions and future expansions.

02 / INTUITIVE

Until now, integration and maintenance of complex systems of systems has been inherently difficult. PHENOM™ has been designed to make integration of disparate systems so easy that even non-data modelers feel comfortable using it.

03 / VERIFIABLE

PHENOM™'s models, reports, generated code and other artifacts are testable, repeatable and verifiable. And since it is built on robust mathematical principals, PHENOM™ is a trusted choice for mission critical systems like those in Defense, Medical, Public Safety and the Transportation industries.



TRY A DEMO

MEET PHENOM

A unique on-line ecosystem of game-changing integration products. Designed specifically for collaborative data modeling, management, reporting, verification, conformance, and automated integration code generation.



PHENOM for the data modeler

- 12 months with remote tool support
- Use of commercial Hyper-Models
- Collaborative Data Modeling & Editing
- Model Refactoring
- Model Analysis, Tracing & Diagnostics
- Model Export, Transform & Formatting
- Knowledgebase user support center *



All the benefits of Modeler, plus:

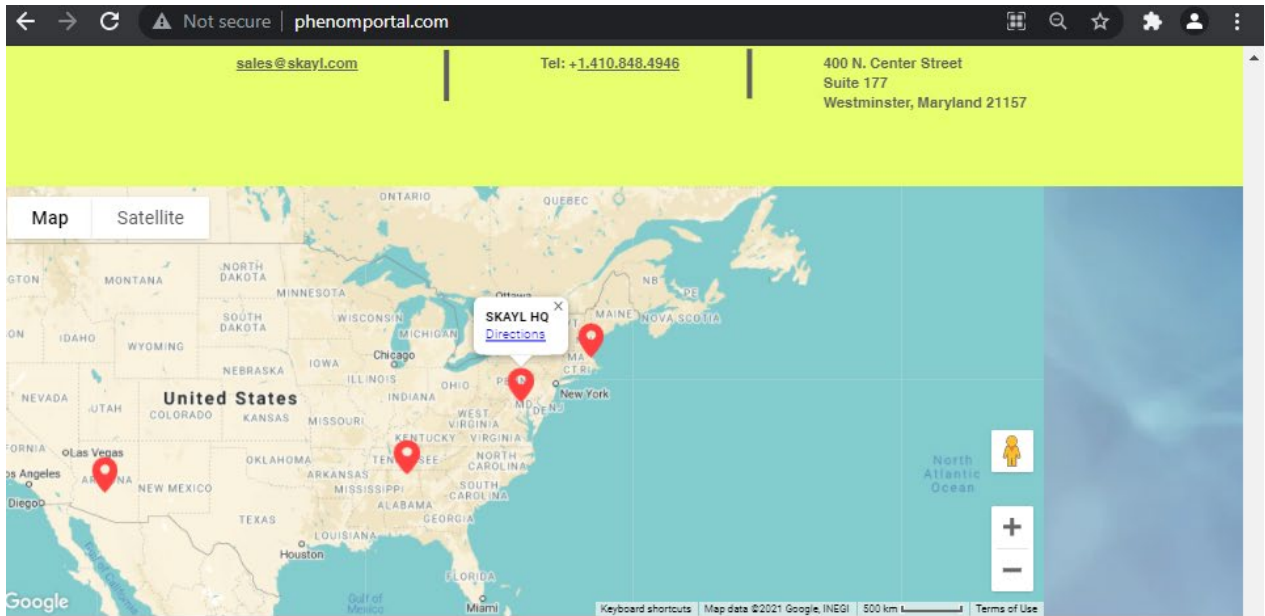
- 8 user licenses
- CinC (Configurable infrastructure Capability) with Code Generation
- Editable templates to support standards interfaces including FACE 3.0, FACE 2.1, OMS & more
- Support for TPMs including DDS, UDP, AMQP & more
- Support for topologies including Pub-Sub, Request-Response, Query-Broker, Point-Point, etc. *



All the benefits of Basic, plus:

- 16 user licenses
- Prioritized issue resolution
- Phone, Video, and Screen Sharing support
- Bi-annual custom training *

* See [Pricing Sheet](#) for additional details



REQUEST DEMO

Please fill your contact details below:

Name

Email

Organization or Company

Phone

Subject

Submit

PHENOM

LINKS

- Home
- Product
- About
- Featured
- Contact
- Demo

ABOUT

sales@skayl.com
Tel: +1.410.848.4946
400 N. Center Street
Suite 177
Westminster, MD 21157

SOCIAL

in f t i