

**Free Shipping on all U.S. Orders \$17.99+**

[Genie Blog \(/blogs/genie-blog\)](/blogs/genie-blog)

[Videos \(/pages/videos\)](/pages/videos)



[\(/search\)](/search)



[GARAGE DOOR OPENERS](/COLLECTIONS/GARAGE-DOOR-OPENERS) ▾ (/COLLECTIONS/GARAGE-DOOR-OPENERS)

[ACCESSORIES](/COLLECTIONS/ACCESSORIES) ▾ (/COLLECTIONS/ACCESSORIES)

[REPLACEMENT PARTS](/COLLECTIONS/REPLACEMENT-PARTS) ▾ (/COLLECTIONS/REPLACEMENT-PARTS)

[SMART HOME](/COLLECTIONS/SMART-DEVICE-COMPATIBLE) (/COLLECTIONS/SMART-DEVICE-COMPATIBLE)

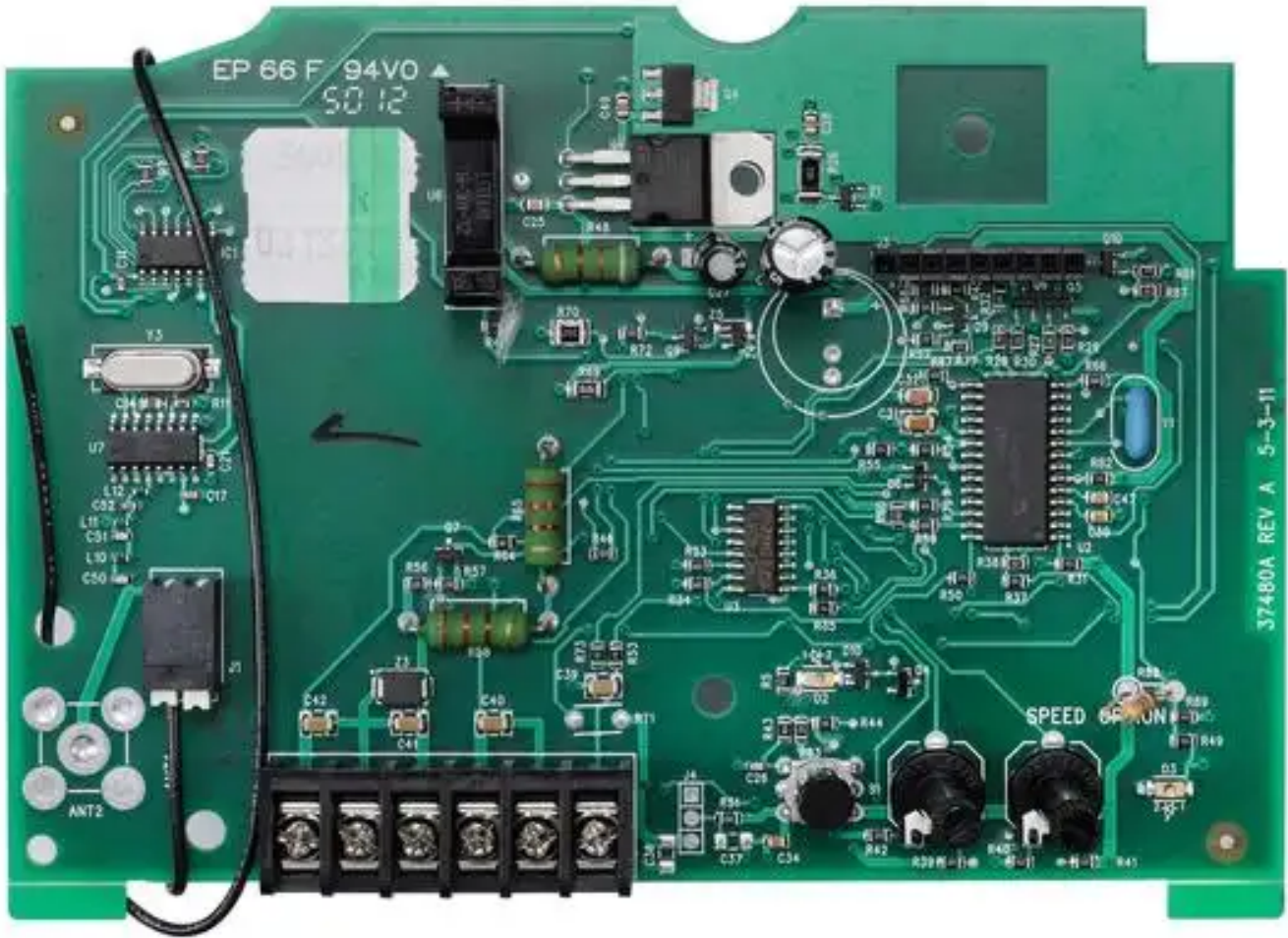


(/)

[Home \(/\)](#) / [Garage Door Opener Circuit Boards \(/collections/circuit-board-1\)](/collections/circuit-board-1) / [Control Board 36600R.S](#)

# Control Board 36600R.S

« [Previous Product \(/collections/circuit-board-1/products/sequencer-board\)](/collections/circuit-board-1/products/sequencer-board) | [Next Product » \(/collections/circuit-board-1/products/circuit-board-1022-1024-1042-2022-2024-2042-39537r-s\)](/collections/circuit-board-1/products/circuit-board-1022-1024-1042-2022-2024-2042-39537r-s)



(//cdn.shopify.com/s/files/1/1470/8272/products/36600R.S-Board-F\_1400x.jpg?v=1568755982)



**PRODUCT DESCRIPTION**

★★★★★ 4.6 (33) Write a review

\$87.16

Add to Cart

Buy it now

Circuit board compatible with screw drive models. Use this board to get your opener back up and running quickly if you have determined your circuit board needs to be replaced.

- Compatible with models 4060L, H8000, ISD990, ISD995, ISD1000, 4560, PRO99, CMD9900
- Genuine Genie replacement part
- Requires re-programming with the new board

**SKU:** 36600R.S

In stock! Usually ships within 24 hours.



- REVIEWS
- INSTALLATION INSTRUCTIONS

★★★★★ 4.6 | 33 Reviews

10 out of 12 (83%) reviewers recommend this product

Reviews

[Write a review](#)

Rating Snapshot

Select a row below to filter reviews.

5 ★  28

4 ★	<input type="text"/>	2
3 ★	<input type="text"/>	1
2 ★	<input type="text"/>	0
1 ★	<input type="text"/>	2

Average Customer Ratings

Overall  4.6

1–5 of 33 Reviews

 Sort by: Most Relevant ▼



**Ei Pelon**

 · 2 years ago

Review 1


**Fix-all control board**

Votes 3

It cured all the problems of failure to open or shut and was very easy to replace.

Helpful? **Yes · 3** **No · 0** [Report](#)

**Eric**

 · 2 months ago

Review 1

**Was faulty or not compatible with my opener**

Votes 0

I replaced the board on my ISD990 since I was receiving a 2 blink error code intermittently per the troubleshooting manual and had performed all the other steps. When I swapped the board out, my opener stopped working completely and gave a 1 blink error code indicating a drive board issue. No amount of resets or double checking installation solved the issue. I put the old board back in and got my opener running again, although it still has the intermittent issue with 2 blinks and requires a reset every other day or so.

**Recommends this product**  No

Helpful? **Yes · 0** **No · 0** [Report](#)

**Response from The Genie Company:**

**Marketing** · 2 months ago

Hi, please contact Genie Customer Support at 1-800-354-3643 for additional assistance.

**Doc**

★★★★★ · 11 months ago

Reviews 2

**New Control Board**

Vote 1

New control board works great. Only took 10 minutes to change out, on the garage opener that's ~19 years old and still functioning well!

**Recommends this product** ✓ YesHelpful? **Yes · 1** **No · 0** **Report****Patrick**

★★★★★ · 2 years ago

Review 1

**The remote control mother board.**

Vote 1

This board fit perfectly and was super easy to install.

**Recommends this product** ✓ YesHelpful? **Yes · 1** **No · 0** **Report****Anonymous**

★☆☆☆☆ · 6 months ago

Pearland Texas

**Unsatisfied**

Review 1

Votes 0

Broke one of the little potentiometer Switches while attaching the little black plastic adjusting knob that is supplied with the control board. Personally, I think for how expensive it was, it's pathetically poor quality. I bought a new different brand. It's sad because it had given fault free service for many years.

**Recommends this product** ✗ NoHelpful? **Yes · 0** **No · 0** **Report****Response from The Genie Company:****Marketing** · 6 months ago


Hi there, we are sorry to hear this. Thank you for your feedback.

1–5 of 33 Reviews



▶ (<https://store.geniecompany.com/collections/circuit-board-1/products/control-board-390mhz?bvstate=pg:2/ct:r>)

## QUESTIONS & ANSWERS

 Ask a Question

**Q Genie- My lights wont go off on my Genie blue max s/n 07944e...any ideas? Thanks, Mike****A**

This could be caused by a few different things. To eliminate these, here are a few steps to try.

First, you would want to remove the wall button from the wall. Then take the two wires off the back of it and leave them off.

You would then want to run the unit with a remote, then wait at least five minutes and the light should time out. If they do go out, you would want to replace the wall console.

If they do not, then you would want to remove the wall button wires from the powerhead. Again, run the unit with a remote, wait the five minutes and see if they go out. If they do, you would want to replace the wall button wire from the wall button to the powerhead.

If they do not go out after both of these, this is an issue with the circuit board.

**Q Cannot get my ISD 1000 to program for a remote. I follow the instructions to push the learn button, but the red led does not illuminate. Do I have a bad control board?****A**

If you are pressing the learn code button, and the red led light is not flashing, then yes, the control board would need to be replaced.

**Q I have an ISD995 Exclerator that I bought in 2003. Worked fine until just now. The remotes no longer work and I can see that the Learn Code button is gone (or bent or came undone from the board). So I cannot program the devices (4). So I think I need a new circuit board and I want to know if I need to remove the whole head unit from the track in order to replace the board? Or does the cover just come off by removing the screws (4)? easier to not have to remove the head unit from the ceiling!****A**

You can view the installation instructions here: (Click for instructions.)

([https://cdn.shopify.com/s/files/1/1470/8272/files/36600R.S\\_Control\\_Board\\_Replacement.pdf?4171](https://cdn.shopify.com/s/files/1/1470/8272/files/36600R.S_Control_Board_Replacement.pdf?4171)) You can replace the circuit board without taking the powerhead off the ceiling.

**Q I have an ISD 990 model and I am looking for the circuit board that when you press the Learn Button the Learn Light indicator lights up. Does this circuit board have that light?****A**

Yes, this is the board with the learn code light.

**Q Hi, I have a 2003 installed genie ISD995 model for my garage door opener. Is there a control board that would replace the existing one I have. Thanks for clarification.****A**

Yes, it is.

« 1 2 3 »

**Related products**


★★★★★ 5.0 (2) (/products/motor-drive-board-36428r.s?pr\_prod\_strat=copurchase&pr\_rec\_pid=1055277667&pr\_ref\_pid=1052668995&pr\_seq=1)  4.1 (8) (/products/circuit-board-2028-1035?pr\_prod\_strat=description&pr\_rec\_pid=1055277667&pr\_ref\_pid=1052668995&pr\_seq=1)  5.0 (6) (/products/light-socket-34-1035?pr\_prod\_strat=description&pr\_rec\_pid=1055277667&pr\_ref\_pid=1052668995&pr\_seq=1)

**MOTOR DRIVE BOARD 36428R.S**  
 (/PRODUCTS/MOTOR-DRIVE-BOARD-36428R.S)  
 PR\_PROD\_STRAT=COPURCHASE&PR\_REC\_PID=1055277667&PR\_REF\_PID=1052668995&PR\_SEQ=1  
 \$209.06

**CIRCUIT BOARD 38647S.S**  
 (/PRODUCTS/CIRCUIT-BOARD-2028-1035)  
 PR\_PROD\_STRAT=DESCRIPTION&PR\_REC\_PID=1055277667&PR\_REF\_PID=1052668995&PR\_SEQ=1  
 \$124.79

**LIGHT SOCKET - 34**  
 (/PRODUCTS/LIGHT-SOCKET-34-1035)  
 PR\_PROD\_STRAT=DESCRIPTION&PR\_REC\_PID=1055277667&PR\_REF\_PID=1052668995&PR\_SEQ=1  
 \$55.79

**CHECK OUT OUR ITEMS ON SALE**   
 (/collections/sale-1)

**WATCH OUR VIDEOS FOR HELPFUL TIPS**   
 (/pages/videos)

**SEARCH OUR SITE**   
 (/pages/search-results-page)

## Shop

- Garage Door Openers (/collections/garage-door-openers)
- Accessories (/collections/accessories)
- Replacement Parts (/collections/replacement-parts)
- Aladdin Smart Home (/collections/smart-device-compatible)
- Shop Collections (/collections)
- Shop By Model Number (/pages/shop-by-model-number)
- ID.me Members (/collections/deals-for-you)
- Search Our Site (/search)

## Policy Information

- Shipping, Returns & Warranties (/pages/shipping-returns-warranties)
- Privacy, Terms & Conditions (/pages/privacy-terms-conditions)
- General Disclaimer (/pages/general)
- Social Media Giveaways; Official Rules (/pages/genie-social-media-giveaways-official-rules)
- Proposition 65 Warning (/pages/proposition-65)
- Do Not Sell My Personal Information (/pages/do-not-sell-my-personal-information)

## The Genie Company

- About Us (https://store.geniecompany.com/pages/about-us)
- Contact Us (/pages/contact-us)
- Genie's Main Website (http://www.geniecompany.com/)
- Geniegivesback.com (https://geniegivesback.com/)
- Genie Brand Logo Gear (/collections/genie-brand-logo-gear)
- Troubleshooting Assistance (/pages/genie-garage-door-opener-troubleshooting)



