



National School of Tropical Medicine

What is Tropical Medicine

Career Paths

Education

Public Policy

Research

Faculty & Staff

Membership

More +

Baylor College of Medicine > Education > National School of Tropical Medicine > Education

What is Tropical Medicine

Career Paths

Education

Public Policy

Research

Faculty & Staff

Membership

News



America's fourth largest city is a great place to live, work and play. Find out why.

Get To Know Houston

Connect with us



Tropical Medicine Education

The National School of Tropical Medicine already has nationally and internationally recognized robust core competencies to establish education programs in Neglected Tropical Diseases and Neglected Infections of Poverty. Together with faculty from the Section of Pediatric Tropical Medicine in the Department of Pediatrics and faculty from other key departments, centers and schools within Baylor College of Medicine and the Texas Medical Center, the school will continue to build infrastructure capacity for research and development (R&D), advocacy and education on the NTDs and related NIOPs in the United States and globally.

Diploma in Tropical Medicine

The diploma program is aimed towards healthcare professionals, including physicians and physician assistants as well as students pursuing related degree programs who would like to practice or do research in tropical medicine here in the United States or internationally. It also serves as an educational tool for healthcare professionals already practicing in developing countries who require an update on infectious, parasitic and other health problems, and for doctors in developed countries who need to diagnose and manage imported infections.

Learn More And Apply

Tropical Medicine Summer Institute

This intensive two-week course, held on the Baylor College of Medicine campus in Houston at the heart of the Texas Medical Center, introduces undergraduate students to the field of tropical medicine through topics in global health, epidemiology, public health, infectious diseases, parasitic diseases, and neglected tropical diseases. Over this two-week course, students will participate in seminars with leading experts in these fields, gain hands-on laboratory experience, and visit research centers and facilities. The summer program exposes students to the field of tropical medicine to help them explore their interests in tropical medicine and perhaps consider a career in medicine and research.

Learn More And Apply

Workshops and Symposia

The National School of Tropical Medicine conducts workshops and symposia to educate health scientists, health providers, and the public about tropical medicine, raise awareness of NTDs, and promote meaningful dialogues concerning public policy. For information email tropmed@bcm.edu.

Policies

[NSTM Policies, Procedures, and Guidelines](#)

Note: View the most updated [Baylor College of Medicine Academic Policies](#). The website contains Baylor Code of Conduct, Diversity Policy, Student Disability Policy, Student Records Policy, Grading Policies, Course Repeat Policy, and other academic policies.

Drop Policy for Students

- Students from another institution who enroll in a course offered by the National School of Tropical Medicine must abide by the drop policy of their respective institutions.
- Four-week long courses may be dropped up to fifth class day.
- Two-week long courses may be dropped up to the second class day.
- Seminar courses may be dropped during the first two weeks.
- Students must complete the course withdrawal form by the end of the drop period.
- Requests to consider dropping after the drop date, due to extenuating circumstances, may be considered only upon completion of the late add/drop form available at the Office of the Registrar website.

Drop Policy for Health Professionals (e.g., MDs, DOs, NPs) taking Courses for Professional Development

- Courses may be dropped prior to and during the course.
- Attendees must inform the course director in writing their intent to drop the course.
- When applicable tuition will be refunded according to the refund policy posted on NSTM website.

Resolution of Conflicts or Concerns

Students are encouraged to first address the individual (student, faculty, staff) involved. If the concern cannot be resolved or is of such a nature the student is not comfortable discussing it with the party involved, the proper channel would be to go to the individual's supervisor. If the problem is not resolved informally, the student may file a formal written grievance following the [grievance filing process](#).

Education Resource Center

The [Education Resource Center](#) provides curriculum support for Baylor students, faculty, fellows, residents and visiting faculty and students. Spanning the 2nd, 3rd and 4th floors of the DeBakey Center for Medical Education, the ERC has quiet study spaces to accommodate a wide range of study styles and preferences. Users have access to both wired and wireless network connectivity and desktop computers are distributed throughout at kiosks. There are also printers, scanners, a copy machine and a fax machine. Additionally, there are multi-device charge stations provided on all 3 floors and an on-site TMC Librarian that can provide assistance with navigating the various research tools and resources available through the Texas Medical Center Library.

ERC staff is available for assistance with scanning and imaging software, wireless connectivity and establishing remote access to the BCM network, and also offers instruction for faculty interested in setting up courses in the Blackboard Learning Management System.

Career Development Center

The [Career Development Center](#) is a centralized service that supports the career and professional development needs of all Baylor College of Medicine students and postdoctoral fellows. The center provides a variety of services including workshops, seminars and individual career advising appointments. Students may utilize career advising services during regularly scheduled walk-in hours on Tuesdays/Thursdays from 4 p.m.- 6 p.m. and Wednesdays from 10 a.m. -12 p.m. or by scheduling an appointment from the website.

Accreditation

Baylor College of Medicine is accredited by the Southern Association of Colleges and Schools Commission on Colleges (SACSCOC) to award masters and doctorate degrees. Questions about the accreditation of Baylor College of Medicine may be directed in writing to the Southern Association of Colleges and Schools Commission on Colleges at 1866 Southern Lane, Decatur, GA 30033-4097, by calling (404) 679-4500, or by using information available on SACSCOC's website (www.sacscoc.org).

Courses and Workshops →

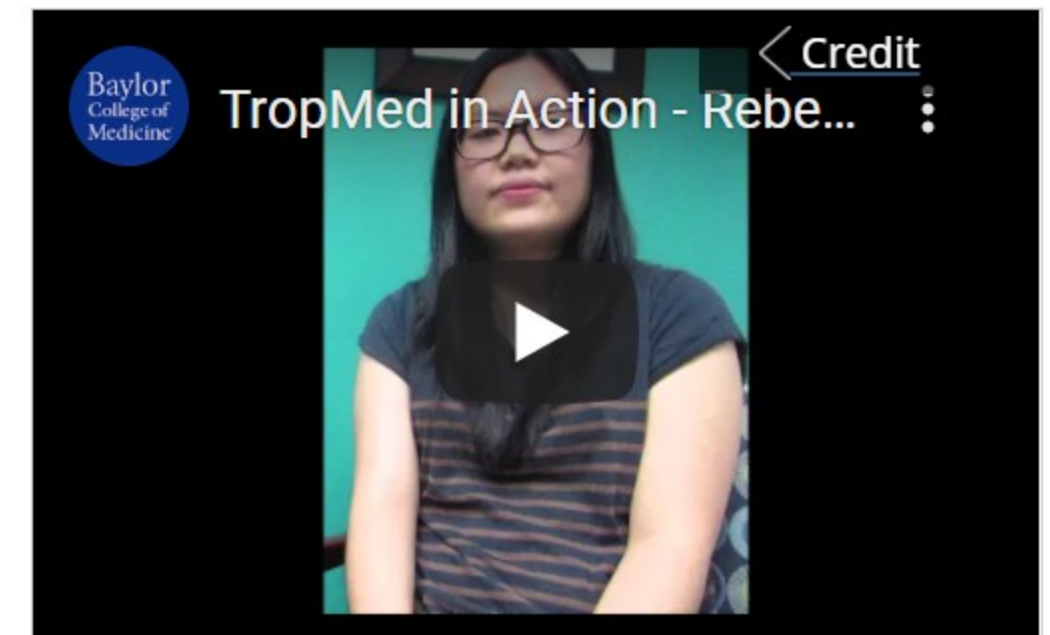
For information email tropmed@bcm.edu.

Distance Education →

Find information about policies and processes related to distance education.



Sessions at the Tropical Medicine Teaching Laboratory, directed by Kathryn Jones, D.V.M., Ph.D., give students at the National School of Tropical Medicine and the Section of Pediatric Tropical Medicine hands-on parasitology experience.



Baylor medical student Rebecca Jeun worked in TropMed labs and then got a grant to travel with one of our researchers, Dr. Rojelio Mejia, and help with his project.



with Dr. Rojelio Mejia



Presentation by Dr. William Butler

Follow Us



HEALTHCARE

- Specialties
- MyChart Login
- For Patients & Visitors
- For Health Professionals
- Clinical Trials
- Find a Physician

EDUCATION

- Programs & Admissions
- Student & Trainee Resources
- Faculty Resources
- School of Medicine
- Graduate School of Biomedical Sciences
- National School of Tropical Medicine
- School of Health Professions
- Tuition & Fees
- Financial Aid

RESEARCH

- Our Research
- Core Labs
- Faculty Labs
- Research Centers
- Research Offices

COMMUNITY

- [Healthcare Outreach](#)
- [Education Outreach](#)
- [Global Outreach](#)
- [Community Events](#)

ABOUT

- [Our Campus](#)
- [Departments](#)
- [Academic Centers](#)
- [Administrative Offices](#)
- [Affiliates](#)
- [Leadership](#)
- [BCM Ventures](#)
- [Giving](#)
- [Alumni](#)

RESOURCE LINKS

- [Contact Us](#)
- [Find a Person](#)
- [Careers](#)
- [BCM Team Shop](#)
- [News](#)
- [Title IX Office](#)
- [Compliance](#)