

LECC Portable UV-C LED Sterilizer  
Model: K1D

注意事項:

- 請勿將【紫外光】出光口正對人眼、皮膚、動物
- 使用設備時，必須使用【UV 防護鏡】
- 18歲以下，禁止使用，請放置在兒童無法觸及地方



迪伸電子  
www.lecc.com.tw



LASER MODULE EXPERTS  
SINCE 2000

雷射二極體、雷射模組、雷射美容保健

www.lecc.com.tw

迪伸電子股份有限公司  
LECC TECHNOLOGY CO., LTD.

迪伸電子股份有限公司  
LECC TECHNOLOGY CO., LTD. 上海富伸光電有限公司  
SHANGHAI LECC OPTO.CO., LTD.

### Laser Module Application

- 3D Scanner
- Beauty
- Medical
- Facial Recognition
- Biotech
- Laser leveling
- AOI
- NightVision
- Measurement
- VR
- Robot/Vacuum

www.lecc.com.tw

### SMD LD

Dot SMD 2323

- 1. Edge Emitting Laser (EEL) Technology
- 2. Dimension: 2.5 x 2.85 x 6.15mm
- 3. High Reliability
- 4. Typical Applications: Air Particle Sensor

TO CAN LD VS SMD SMD LD	
Structure	6-8 Pin type
Dimensions	6.6 x 6.6 x 6.6mm
Assembly Speed	Low
Reliability	High
Power	Low
Waveform	Modulated
AOI Test	Not possible
Surface Mount	Not possible
Order Min.	1000

www.lecc.com.tw

### Laser Module Application

#### UVC LED Module

Introduction

- SARSCoV
- Disinfection of Viruses
- DNA, RNA, Protein
- UVC destroys structure of DNA/RNA

www.lecc.com.tw



LECC TECH CO LTD

**TAIWAN**

**DOE . TOF . VCSEL**

**Laser Module**



**PM2.5 / 3D Scanner / LIDAR**

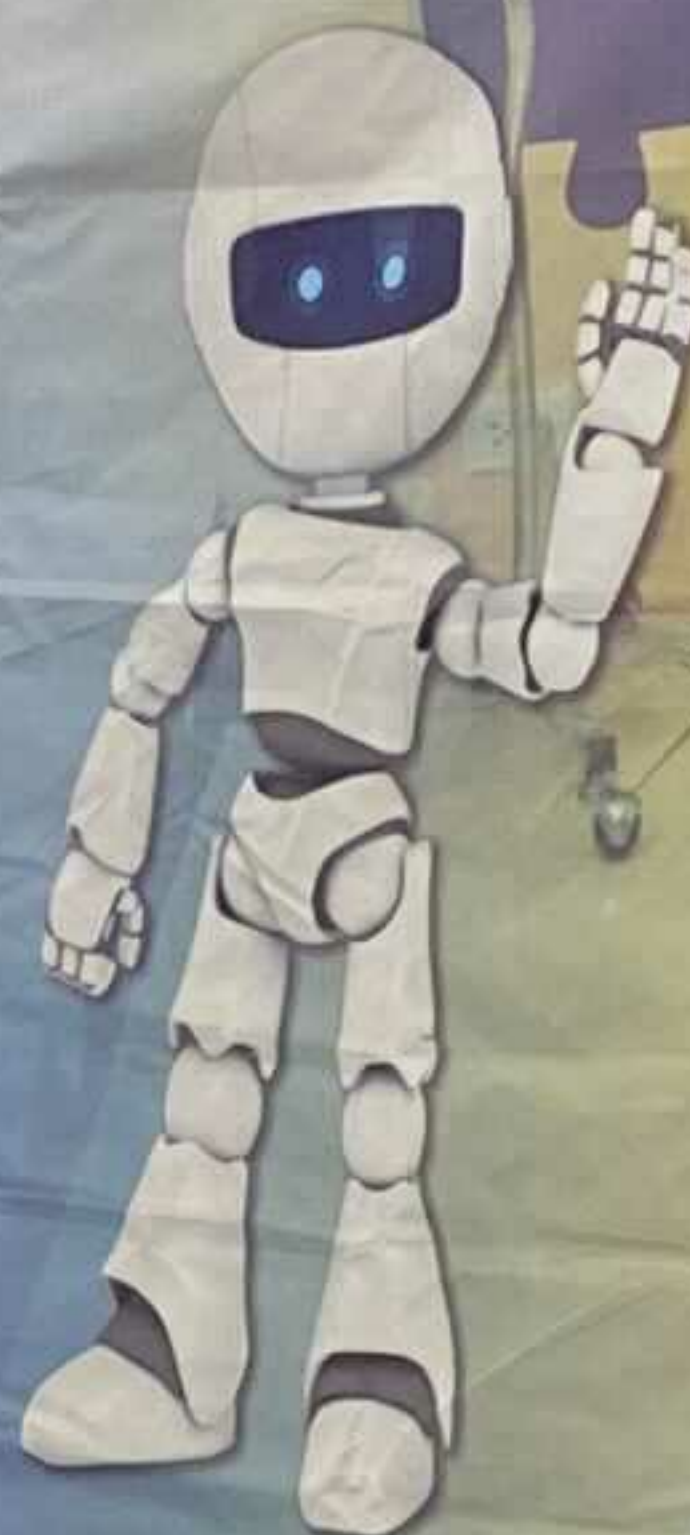
**ToF Laser Module For Robot**  
Distance: 0.15-15M  
Laser Safety: Class 1

**IDENTIFICATION**

4090

LECC TECH CO LTD

TOF / LDS Laser



上海富伸光電有限公司  
SHANGHAI LECC OPTO CO., LTD.

www.lecc.com.tw

@lecc.com.tw

OPTOGEAR  
SOLUTIONS FOR OPTICAL FIBER MANUFACTURING

PREFORM MANUFACTURING



FIBER WINDING

OPTOGEAR

CT / MRI / X-ray / Science Medical & ...

PM2.5 / 3D Scanner / LIDAR

ToF Laser Module  
For Robot  
Range: 0.15-15M  
Laser Safety: Class 1



TOF, TOF, VCSEL  
Laser Module

4090