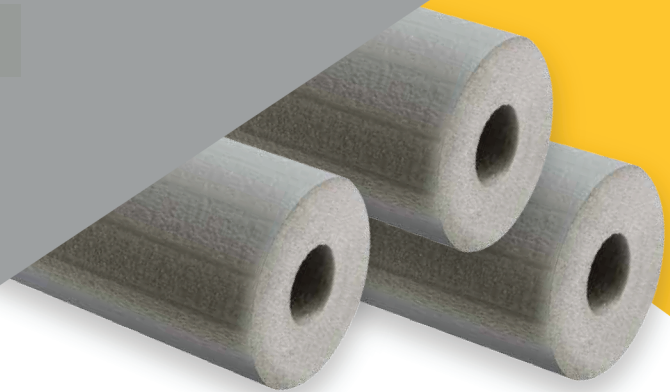


INSULITE

Is a flexible closed cell polyethylene (PE) foam insulation used in residential, commercial and industrial applications to prevent thermal losses, condensation and moisture accumulation that leads to mold. It is a ecological product since it does not contain CFC, HFC, HCFC, PBDE, Formaldehydes or Fibers.

Its moisture resistant characteristics make it especially valuable on chilled-water and refrigeration pipe lines where condensation might otherwise soak through fibrous types of insulations, significantly degrading their thermal performance, leaving them susceptible to fungal growth which ultimately shortens their lifecycle.



▶ PRODUCT ADVANTAGES

- Low thermal conductivity and a very low water vapor transmission rate.
- Excellent thermal, physical and chemical resistant properties.
- Indoor Air Quality: Low VOC, Fiber-Free, non-particulating, Formaldehyde-Free insulation.
- Reduces noise levels.
- Resist mold and mildew.
- Its flexible closed cell nature makes it easy to cut and install.
- Closed-cell foam structure prevents moisture wicking and eliminates need for additional vapor retarder.
- Long-lasting, retains thermal integrity over time.
- Meets ASTM E84 25/50 rated up to 1" wall thickness.

▶ APPLICATIONS

INSULITE is used to delay the gain or loss of heat and avoid condensation in applications below ambient temperature, including refrigeration, chilled water or vapor lines, HVAC systems, mechanical systems and chillers, industrial, marine, petrochemical, schools, universities and hospitals, among others.

It also delays heat loss from heat systems medium, including hot water pipes used in industrial, commercial and residential applications.

Designed for indoor or outdoor use.

Exterior applications must be painted with a Water Based Finish to protect against UV radiation.

It has a service temperature range between -297°F to 200°F (-183°C to 93°C).

▶ AVAILABILITY

INSULITE PRO is available in tubes, sheets and rolls in wall thickness of 3/8", 1/2", 3/4", and 1" and in tube sizes ranging from 3/8" to 4" IPS ID.

▶ INSTALLATION

INSULITE insulation is flexible (even at low temperatures), durable (non-fracturing and skin resistant to tearing from handling and environment), safe to handle (non-dusting, fiber-free and non-abrasive) and lightweight for an efficient installation.

It is recommended that INSULITE insulation be installed in non-operating systems with clean and dry surface in environmental conditions between 40°F to 110°F (4°C to 43°C).

The tubes can slide over pipes and copper fittings or can be applied to existing pipe lines by grooving and sealing all butt joints, termination points and open ends should be sealed with water-based contact adhesive depending on the requirements of the application.

It is acceptable to use INSULITE insulation in buried applications when installed above the water table. When the installation is below the water table, lines must be encased in a conduit to protect them from problems associated with ground water intrusion and compaction.

It may be necessary to additional protection against the vapor barrier when install in cold systems located in high environments humidity.

The standard guide ASTM C1710 "Installation of Flexible Closed Cell Preformed Insulation in Tube and Sheet" should be used as comprehensive installation guide. It is the customer's responsibility to verify if the product is suitable for the intended application. The responsibility for a professional and a correct installation and compliance with relevant building regulations or codes lies with the customer.

The numerical flammability ratings alone may not define the performance of the products under actual fire conditions. They are provided only for the use in the selection of products.