



# sofia

Healthcare providers need real time insights about patient, staff and asset locations to optimize care delivery in the moment

AIRISTA Flow Sofia Software

# sofia

0:29 / 3:41

## sofia - Location Insights for Situational Awareness

### A COMMON VIEW TO THE LOCATION OF YOUR MOST VALUABLE RESOURCES

- Patient Flow
- Asset Tracking
- Staff Workflow
- \*Staff Safety
- Contact Tracing
- Wander Management
- Temperature Monitoring
- \*Hand Hygiene

\*extensions to the sofia platform

"The lessons of COVID-19 taught us the importance of preparedness when thinking about strategic priorities. To respond in the moment requires insight to the movement of patients, staff and equipment."

Kimberly Fletcher, PCS Emerson Hospital Emergency

[Solution Brief](#)



## sofia - Location Insights for Situational Awareness



### LOCATION INSIGHTS DONE QUICKLY, SIMPLY AND AFFORDABLY.

- Fast, affordable, simple to use
- Packaged workflows & dashboards
- Centralized cloud management
- Variety of tags according to use case
- Long lasting battery, field replaceable
- Over-the-air programmable tag configurations
- Simplified deployment models
- GDPR, CCPA, and HIPPA compliant
- Leverage the investment in your WiFi infrastructure
- Options for location accuracy below for bed/bay level accuracy
- Analytics tools to spot trends and drive behavior

## sofia - Location Insights for Situational Awareness

### HOW DOES IT WORK?

The AiRISTA Cloud is accessed from the customer's wireless network

- Dashboards, Reports
- Events, Alerts
- Process Workflows
- APIs: REST, Web, Streaming

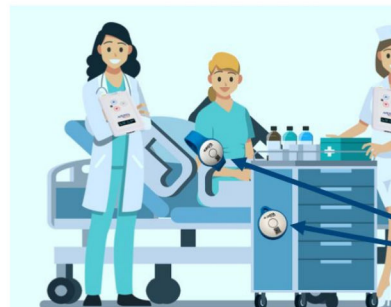


The Staff Tag communicates to the access point over Wi-Fi

Patient Tags & Asset Tags communicate to the G3 gateway over BLE



The G3 gateway acts as a location beacon and communicates to the access point over Wi-Fi



## sofia - Location Insights for Situational Awareness

### FREQUENTLY ASKED QUESTIONS

#### WHAT IS REQUIRED TO DEPLOY THE SOLUTION?

Once you upload your floorplans to the portal, you will receive gateways with labels indicating the location for installation. Gateways are simple AC power outlet adapters that plug into a wall outlet. Typically, 1 gateway is required for each room that is monitored. You also receive tags which are attached to equipment or provided to patients and staff. Once activated, they tags are detected by gateways and visible from the sofia portal. Deployment typically takes days, not weeks, and can be done by AIRISTA Flow field teams.

#### CAN THE SAME TAG BE REUSED FOR OTHER USE CASES?

#### HOW IS THE SOLUTION PRICED?

#### HOW DO I EXTEND THE PLATFORM FOR STAFF SAFETY OR HAND HYGIENE?

#### HOW DOES A TAG COMMUNICATE WITH THE CLOUD BASED SOFTWARE PLATFORM?

#### WHAT USER ROLES IN THE SYSTEM DISTINGUISH DIFFERENT LEVELS OF ACCESS

#### IS THE SOLUTION HIPPA COMPLIANT?

#### AS A WIRELESS SOLUTION, DOES THE PLATFORM HAVE A RELIANCE ON THE WI-FI INFRASTRUCTURE VENDOR?