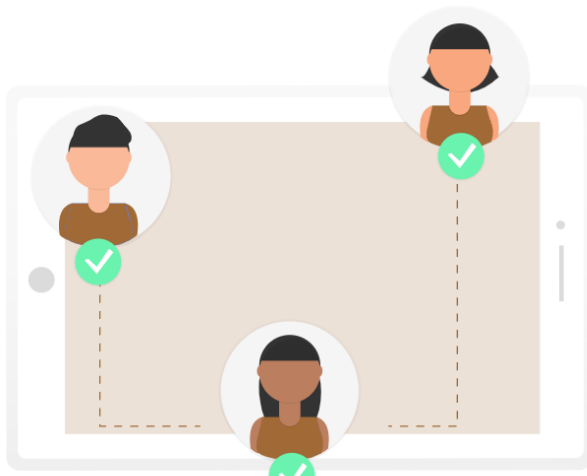


Relay







LEARN HOW

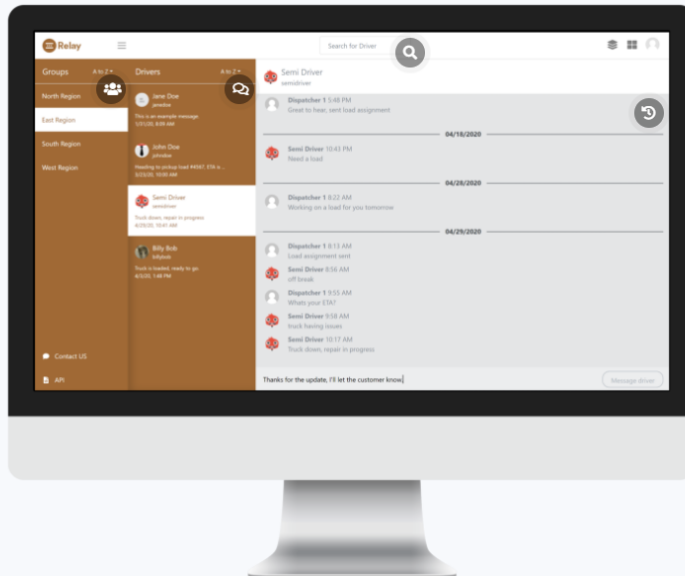
Relay Brings Dispatchers & Drivers Together

Relay connects dispatchers, planners, and office staff to drivers in the truck, at home, or wherever they may be. Messages are tracked on a timeline, organized by group or driver, and can be easily searched for reference and auditing purposes. Technology is at a point that makes people accessible anywhere at any time and Relay takes advantage of that. Drivers feel more connected to the dispatchers, and the dispatchers can be more responsive to the needs of the drivers.

[Download a Product Sheet](#)

Improve dispatch-to-driver communication.

-  Organize and group drivers
-  Personalized, one-to-one communications
-  Search all messages by driver
-  Chronologically track all conversations



Designed with Users in Mind

Users crave good communication tools that are feature-rich and easy to use, and Relay checks all the boxes. Developed for transportation professionals by transportation professionals, we're proud of this simple in concept, yet robust in features, product.



Contextual Conversations

Relay's threaded message history is chronologically organized and intuitive to navigate delivering a similar experience like other messaging applications. Relay takes it a step further and conversations can be searched by shipment or driver for reference and auditing.

One Platform to Rule Them All

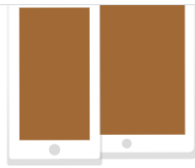
Not all drivers may be on the same platform, and making a company-wide switch to another solution is a daunting task. Relay integrates multiple third-party messaging clients into one common user interface. Your drivers keep their individual experiences while your office staff enjoys newer technology with greater flexibility.



Bridge the After-Hours Gap

Dispatchers can receive messages on any mobile device, even after leaving the office. Drivers feel more connected to the dispatchers, and the dispatchers can be more responsive to the needs of





Dispatchers can receive messages on any mobile device, even after leaving the office. Drivers feel more connected to the dispatchers, and the dispatchers can be more responsive to the needs of the drivers.



Ready to get started?

Contact one of our experts today with your software, pricing, and purchase questions. We are here to help!

[Contact Us](#)



We are transportation professionals developing software solutions for the transportation industry. Our innovative products are built on our years of knowledge and experience.

