

CATALOG 2005F



**QUALITY PRODUCTS  
AND SERVICE SINCE 1911**



**CROKER**  
DIVISION OF FIRE-END & CROKER  
ELMSFORD, NEW YORK 10523



# TABLE OF CONTENTS



CROKER DIVISION  
 Fire-End & Croker Corporation  
 7 Westchester Plaza  
 Elmsford, New York 10523

Website Address: [www.croker.com](http://www.croker.com)  
 E-Mail Address: [Info@croker.com](mailto:Info@croker.com)  
 Telephone No.: 914-592-3640  
 Fax No.: 914-592-3892

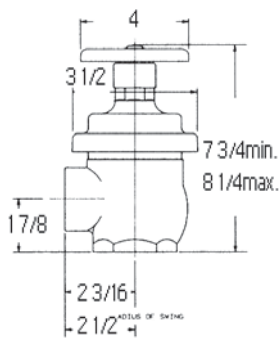
## CATALOG 2009R

SECTION	SUBJECT	PAGES
1	<b>EQUIPMENT APPLICATION / TABLE OF CONTENTS</b>	
2A	<b>FIRE HOSE, VALVE AND EXT. CABINETS</b> SELECTION FIRE HOSE CABINETS FIRE EXTINGUISHER CABINETS FIRE VALVE CABINETS ACCESSORIES	2-2 thru 2-7 2-8 thru 2-13 2-14 thru 2-16 2-17 thru 2-18 2-19 thru 2-20
2B	<b>ACCESS PANELS</b> SELECTION ACCESS PANELS	2-22 2-23 thru 2-26
2C	<b>SPECIALTY CABINETS</b> SECURITY CABINETS SECURITY ACCESS PANELS MARINA CABINETS LOBBY STORAGE CABINETS SPRINKLER CONTROL CABINETS	2-28 2-29 2-30 2-31 2-32
3	<b>HOSE STATIONS AND ACCESSORIES</b> HOSE RACK ASSEMBLIES FIRE HOSE AND COUPLINGS NOZZLES VARIABLE GALLONAGE NOZZLES	3-2 thru 3-6 3-7 thru 3-9 3-10 thru 3-11 3-12
4	<b>FIRE EXTINGUISHERS</b> SELECTION GUIDE PORTABLE WHEELED CLASS D, WET CHEMICAL AND BRACKETS	4-2 4-3 thru 4-6 4-7 4-8
5	<b>VALVES</b> HOSE VALVES PRESSURE REGULATING VALVES ACCESSORIES 500LB. ANGLE VALVE VALVE HANDLES	5-2 thru 5-7 5-8 thru 5-17 5-18 5-19 5-20

(Continued)



**Figure No. 5455**



**PRESSURE REGULATING "EZE" 1 1/2" ANGLE VALVE**  
U/L LISTED

300lb. Non-adjustable automatic pressure regulating valve for use as a hose outlet valve or fire hose rack valve where inlet pressures require regulation. Figure No. 5555 may also be used as a zone control valve on a sprinkler system for flows up to 250 GPM.

**STANDARD EQUIPMENT:** Cast Brass valve with Female NPT inlet X Male hose thread outlet or female NPT outlet. Aluminum handwheel.

**OPTIONAL FINISHES:**

- PB-Polished Brass
- RC- Rough Chrome Plated
- PC- Polished Chrome Plated
- VN- Visual Indicator
- SB- Switch Bracket

**SPECIFY  
THREAD**

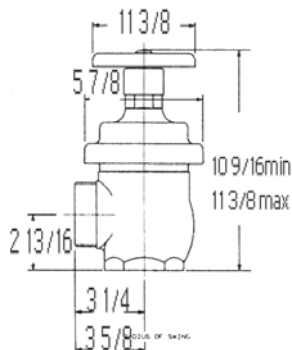
**Figure No. 5450** -Double Female NPT with Visual Indicator

**Figure No. 5455** -Double Female NPT with Visual Indicator and Switch Bracket

**Figure No. 5460** -Female NPT inlet X Male Hose thread outlet.



**Figure No. 5475**



**PRESSURE REGULATING "EZE" 2 1/2" ANGLE VALVE**  
U/L LISTED

400lb. Non-adjustable automatic pressure regulating valve for use as a hose outlet valve for hose rack valve or sprinkler control where inlet pressures required regulation.

**STANDARD EQUIPMENT:** Cast Brass valve with Female NPT inlet X Male hose thread outlet or female NPT outlet. Aluminum handwheel. Available grooved inlet and grooved outlet.

**OPTIONAL FINISHES:**

- PB-Polished Brass
- RC- Rough Chrome Plated
- PC- Polished Chrome Plated
- VN- Visual Indicator
- SB- Switch Bracket

**SPECIFY  
THREAD**

**Figure No. 5470** - Double Female NPT with Visual Indicator

**Figure No. 5475** - Double Female NPT with Visual Indicator and Switch Bracket

**Figure No. 5477** - Grooved X Grooved with Visual Indicator and Switch bracket.

**Figure No. 5480** - Female NPT inlet X Male hose thread outlet.

## NON-ADJUSTABLE/FACTORY SET IN-LINE AUTOMATIC "EZE" PRESSURE REGULATING VALVES

### 2 1/2" IN LINE VALVE:

#### Underwriters Laborator

#### Underwriters Laborator Device

Regulates pressure under flow (residual) no flow (static) conditions.

For use with automatic sprinkler systems.

Available with switch bracket for mounting supervisory switch.

Furnished standard with visual indicator for on-off inspection.

Will reduce inlet pressure of 400 PSI. or less to desired outlet pressure of 20 PSI or more.

#### SETTING INFORMATION REQUIRED: AUTOMATIC SPRINKLER SYSTEMS GPM, STATIC AND RESIDUAL INLET AND OUTLET

#### STANDARD EQUIPMENT:

Cast brass valve with female NPT inlet X female NPT outlet.  
Aluminum handwheel. Available grooved inlet X grooved outlet.

#### OPTIONAL:

PB-Polished Brass  
RC- Rough Chrome Plated  
PC- Polished Chrome Plated

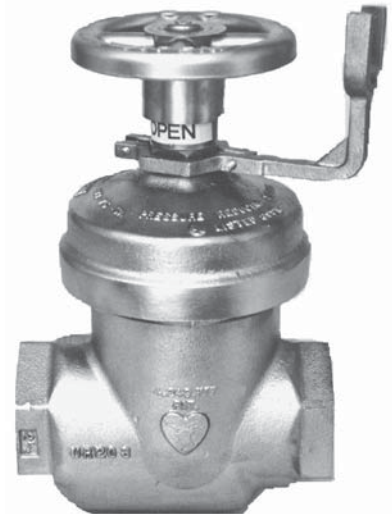
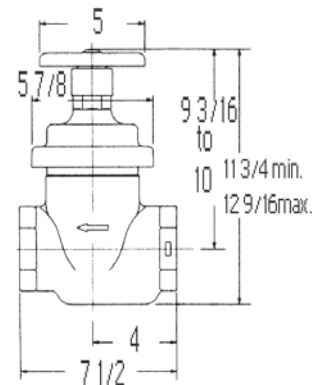


Figure No. 5495

**U/L  
LISTED**



**Note:** Add 2 1/2" for  
G X G takeout

**Figure No. 5490**-Double Female NPT with Visual Indicator

**Figure No. 5495**-Double Female NPT with Visual Indicator and Switch Bracket

**Figure No. 5497**-Grooved X Grooved with Visual Indicator and Switch Bracket.