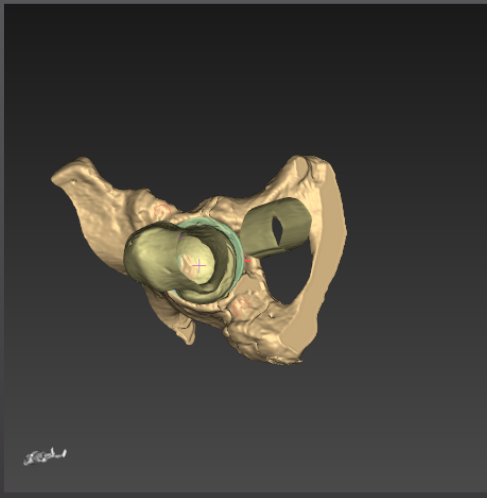
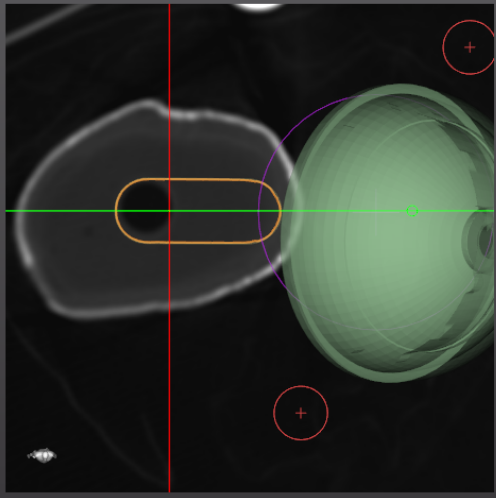
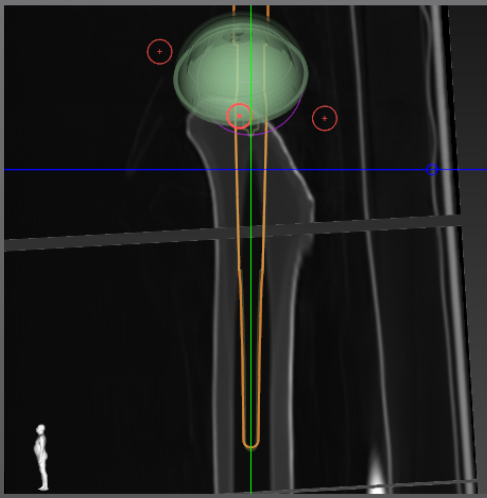
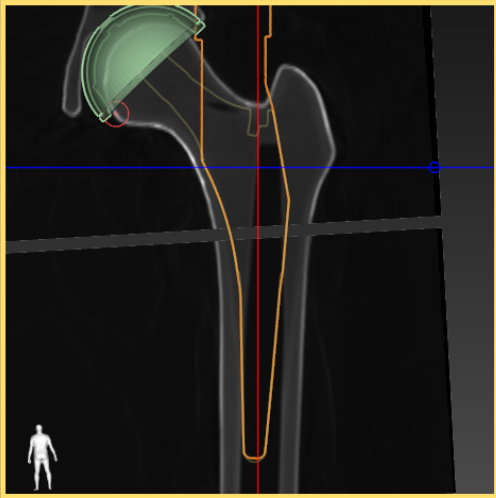


CaseManager SurfaceGen CasePlanner



Patient Name: TEST ROBODOC CaseID: ABC10001
 PatientID: TEST ROBODOC Scan Date: 2013/11/11
 Approach: Postero-Lateral

Save Case Save Case As... Restore Case Volume Render View Report

Native Femur Version: 26.64°
 Cup Anteversion: 9.51°
 Inclination: 42.01°
 Offset: -4.44 mm
 Leg Length: -2.33 mm
 Combined Anteversion: 32.64°

Approve

Cup Control Panel

Load Implant Unload Implant

Continuum, Uni-Hole (Sz KK/56)



1.0 (mm)

1.0 (°) About center

Implant Opacity On

Implant Cut Opacity On



Implant Ball Size 32 mm, 12/14

Neck Length (mm) -3.5

Liner Option KK/32, Longevity H On

Cup Size KK/56

TSI Part Number 107554
 Mfr. Part number 00-8757-056-00

View Control Panel

General Bone Controls Pelvis View



1.0 (mm)

1.0 (°)

Zoom Reset

Window Reset

Level Reset

Display image in color

Save view Goto saved view Reset view

Proximal jump Distal jump

Keep crosshair centered