



www.ciemanufacturing.com



UNRAPPED QUALITY, SAFETY, AND TOTAL LOW COST OF OWNERSHIP.

# REVERSE



10530 Sessler St / South Gate, CA 90280 / Telephone: 877-771-0725 / WWW.CIEMANUFACTURING.COM



# PRECISION MANUFACTURING



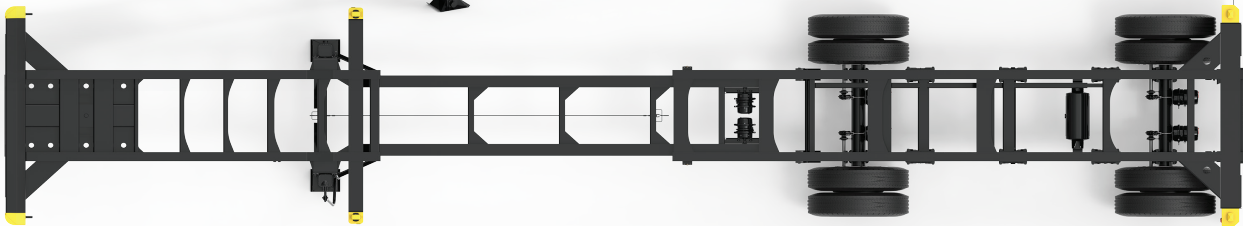
**“OUR REVERE CHASSIS SPEC IS SOLID EVIDENCE THAT CIE MANUFACTURING IS TRULY LEADING THE INTERMODAL EVOLUTION WITH THE ONLY AVAILABLE INDUSTRY-WIDE 10-YEAR WARRANTY.”**

**“LOWEST COST OF OWNERSHIP AND PEACE OF MIND ON PERFORMANCE. NOW THAT IS PRICELESS PROGRESS!”**

— Frank Sonzala, President & CEO, CIE Manufacturing



//// //// AS PICTURED ON A 20'/40' CITY COMBO TANDEM WS //// ////



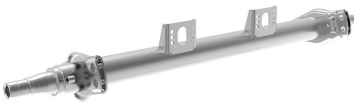
### PHILLIPS INDUSTRIES Electric Harness & Lights

Fit with Phillips Uptime air and electrical package. Offering a limited lifetime warranty on lights and harnesses.



### KIC/ACCURIDE 10 - Year Wheel Ends

ROLLiant™: An affordable hub system with a worry free installation and the industry's only 10 year warranty.



### AXN Heavy Duty Axle

The AXN axle has a Seamless Tube and Single Piece Beam to eliminate seam welds, extra material at the bearing journals, and line-bored Cam Shaft holes for 100% precision. AXN axles deliver unsurpassed strength and durability, while being among the lightest in the industry.



### TSE Brake Chambers and Slack Adjusters

FT-REX Sealed when it counts – Replaceable Pre-cut push rods – Stainless steel clevis pins – Superior corrosion protection.

### BENDIX ECU and Air Valves

The Bendix TABS-6 2S/1M System intelligently assigns braking power in every road condition with our Advanced Select Smart Control. Includes a five year warranty.



### HUTCH SUSPENSION SERIES

**9700 Series** Options and Specifications vary according to chassis model.

The Hutch Suspension is the most versatile suspension product in the industry backed by 60 years of design, manufacturing, and testing. Key features include a Huck "lock bolt" fastening system, the industry's finest rocker brushing, and torque arm screws that are coated with "NEVER-SEEZ" to resist corrosion. Exact specifications will vary according to chassis axle configuration.



### JOST LANDING LEG A440 Intermodal Magnum Series

The Jost Magnum 10-year internal gear configuration adds extreme protection against the damage that water and road chemicals create externally while internally protecting the gearbox on each leg using a premium all weather lubricant and elevating screws that are completely encased by a grease tube.



### 10 YEARS LIMITED TO NON-WEAR ITEMS

INCLUDES: KTL POWDER COAT SYSTEM / ROBOTIC PRECISION WELDS / LASER METAL CUTTING PROCESS