

COVID-19 Update: We're fully up and running! Free shipping to US and Canada over \$49

Log in or Create an account

Cart: 1

Checkout

Search



Carbide 3D

Machines ▾

Workholding ▾

Cutters ▾

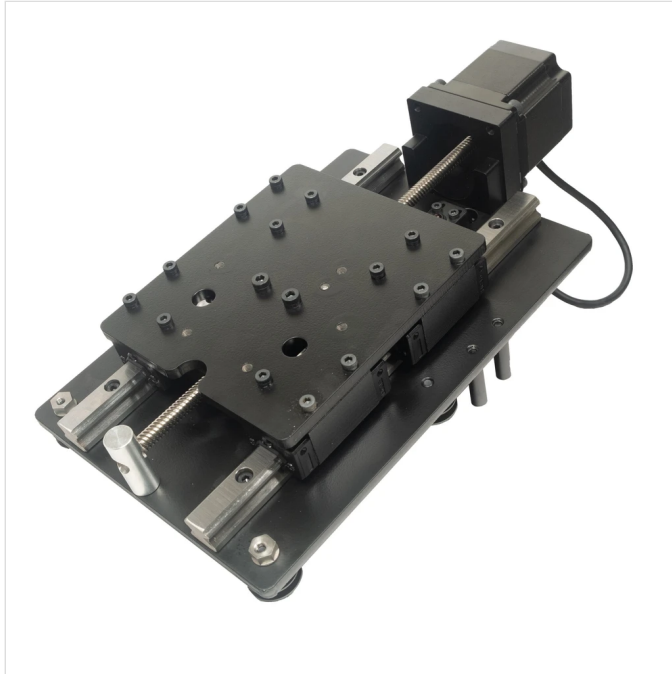
Accessories ▾

HD ▾

Materials ▾

About Us

Home > Accessories > Shapeoko Z-Plus



Shapeoko Z-Plus

\$ 250.00

Size

Standard ▾

Sold Out

EMAIL ME WHEN AVAILABLE

The Shapeoko Z-Plus is our new upgrade for the Shapeoko. It's got all the rigidity of the [Shapeoko HDZ](#) at a much lower price.

No more Z axis belt drive or V wheels with the Z-Plus.

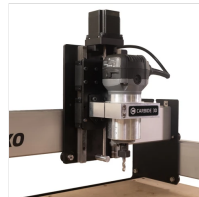
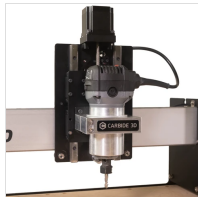
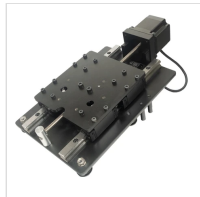
The Z-Plus includes:

- Stepper motor with integrated leadscrew
- Custom made anti-backlash nut
- Twin HG15-style linear rails with two linear guides on each rail
- Plates are .25" powder-coated steel
- Inductive homing switches for X, Y, and Z (with adapter board)
- EZ-Tram plate to make it easier to adjust left/right tilt of the spindle

[See our Z-Plus Video Here](#)

NOTE: Because this upgrade requires a change to inductive limit switches, only machines with the Carbide Motion PCB version 2.4 or higher are supported. If your machine is newer than Feb 2017, it's probably got a supported PCB. If you have an older machine, or you're not sure what board you have, get in touch and we'll try to help out.

For the legally-obsessed out there, the Shapeoko, Carbide Compact Router, and cutter shown in the photo are not included with the Z-Plus. But you already knew that.



Related products



.25" ER-11 Collet and Nut
\$ 25.00



BitRunner
from \$ 80.00



Double Sided Tape for CNC
\$ 14.00



Low Profile Vise
\$ 120.00

Quick Links

- [Search](#)
- [About Us](#)
- [Return Policy](#)
- [FAQ](#)

Copyright © 2020 Carbide 3D

