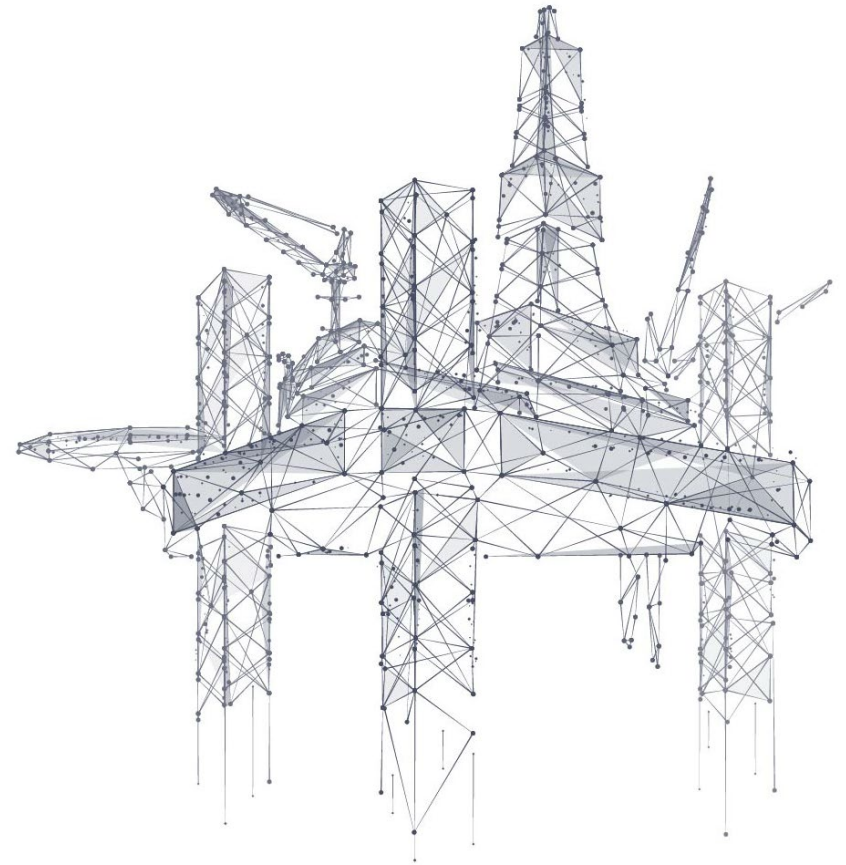
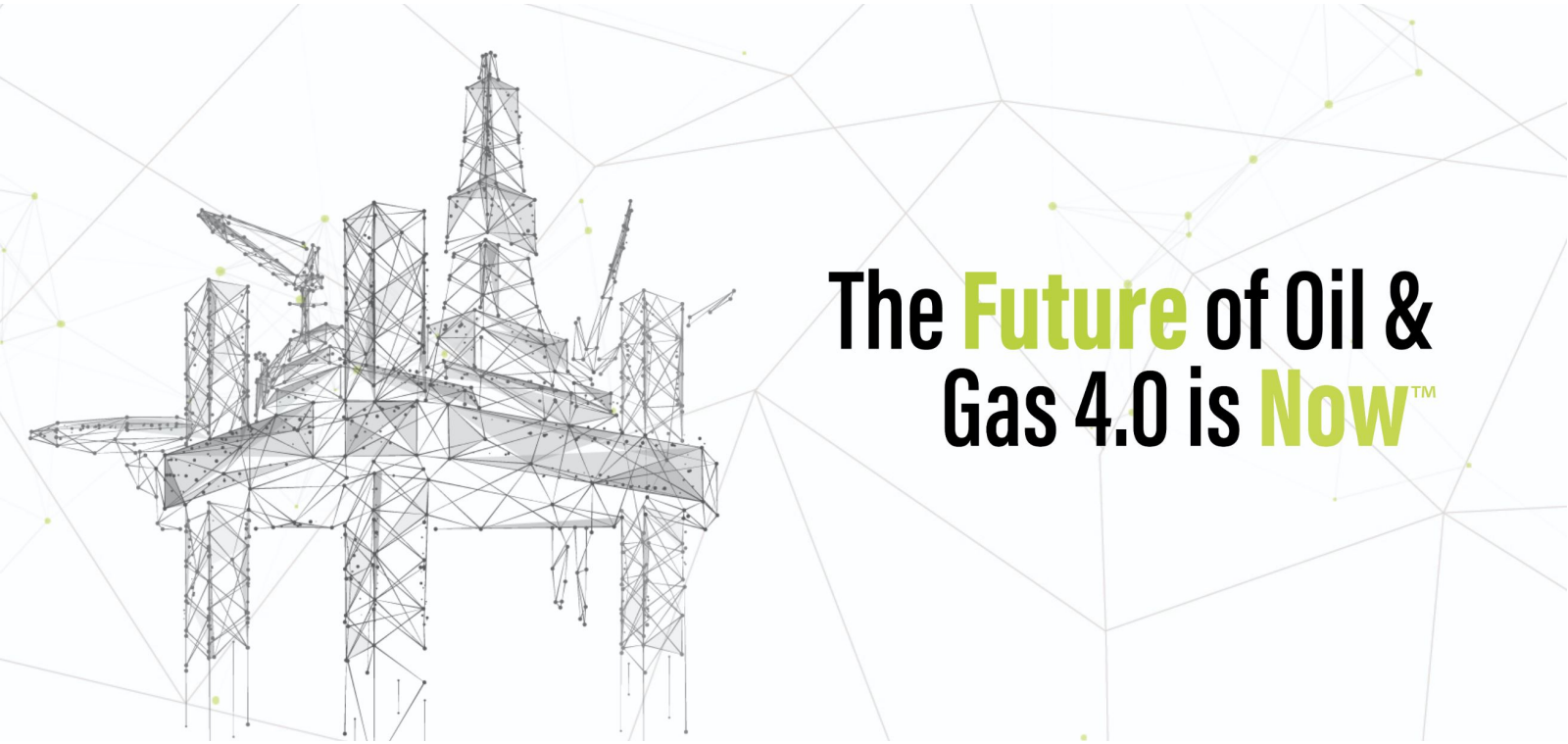


PURE WELL SOLUTIONS

PRODUCTS & SERVICE OVERVIEW





The **Future** of Oil & Gas 4.0 is **Now**TM

OUR PURPOSE

Pure Well Solutions (PWS) is an impact investment company providing sustainable oil and gas products and services by managing available resources, technologies, and investments to optimize efficiency and reliability. Guided by the tenets of a “Circular Economy” and committed to sustainability, PWS aims to redefine the current take-make-waste industrial model of the oil & gas sector by delivering the triple bottom line: **People, Planet, Profit.**

OUR VISION

People, Planet, Profit



Corporate Responsibility

In continuation of our commitment to **Sustainable Development**, PWS has adopted a commitment to a yearly audit review of our sustainability efforts. By doing so, we are also able to aide our customers with audit services to ensure organizations are equipped with today's UN sustainability targets.

Impact Investment

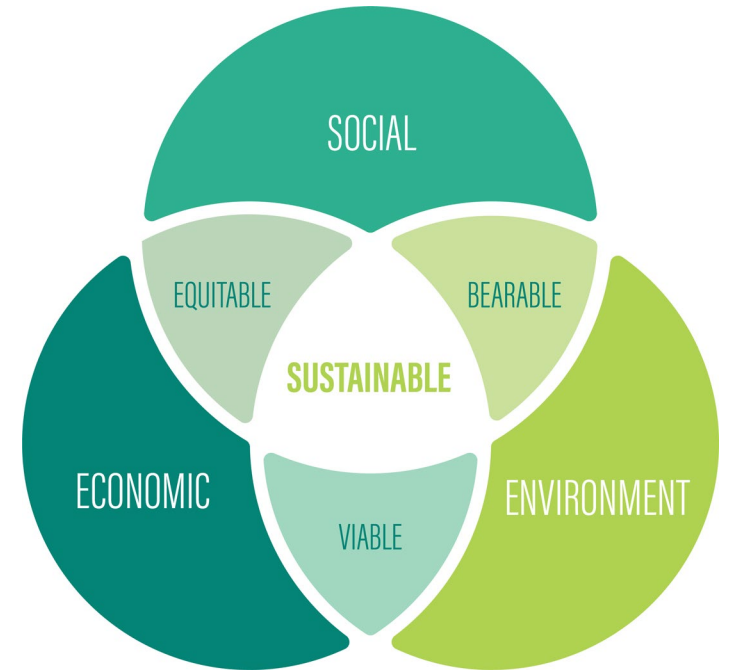
As an “**Impact Investment Company**,” PWS is committed to donating a minimum 1% of profits to charitable organizations within our sphere of influence. As a partner of PWS, your organization will have a direct and positive impact on the world.

Committed to Sustainability

To meet the intensifying urgency for the oil & gas sector to address environmental concerns, PWS offers **100% Measurable Sustainable oilfield products** that optimize efficiency and save energy with their waste-eliminated patent-pending technology.

Sustainable Development Goals

PWS has adopted a **Sustainability Plan** in alignment with the UN 2030 Agenda for Sustainable Development. PWS has identified Goals **#9** (Industry, Innovation & Infrastructure), **#12** (Responsible Consumption & Production) and **#17** (Partnerships) as most relevant to our organization's activities, priorities and impacts.



OUR MANUFACTURING & OPERATIONS FOOTPRINT

People, Planet, Profit



Strategically positioned to where you need us

PWS has a global manufacturing and operations footprint—providing rapid deployment of engineering and manufacturing operations around the world for in-country value.

North America

Southeast Asia

United Kingdom

Australia

United Arab Emirates

Saudi Arabia

OUR TEAM

People, Planet, Profit



MICHAEL BLAKELY
**GROUP MANAGING
DIRECTOR**



GEORGE CHRISTIE
**BUSINESS DEVELOPMENT
DIRECTOR**



ARIANA CARRUTH
**MANAGING DIRECTOR,
AMERICAS**



OUR CORE VALUES

People, Planet, Profit



STEADFAST

We are relentless in our pursuit of excellence and dedicated to our core mission to make sustainability a commercially viable reality by bringing forth solutions that save energy and optimize efficiency.

EVER EVOLVING

We think big, we take risks, we question the norm, and we welcome the challenge and opportunity to innovate.

ACCOUNTABLE

We hold ourselves, colleagues, partners and customers accountable. We do what we say we will do.

TRANSPARENT

We promote open and honest communication with a commitment to proactively share important information with our colleagues, partners, and customers. We do not withhold bad news.

OPTIMISTIC

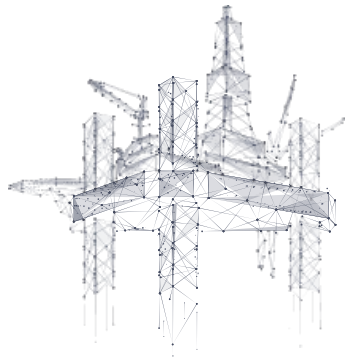
We are committed to maintaining a positive, can-do attitude in everything that we do and in our interactions with our colleagues, partners and customers. We believe in having fun and in maintaining a healthy balance to our workday.

COLLABORATIVE

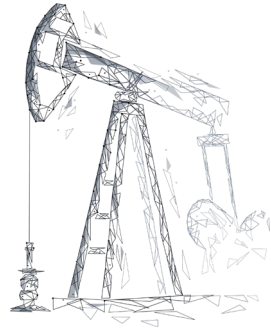
We are dedicated to being a collaborative business partner and teammate. We promote conversations that solve problems and build consensus.

OUR SUSTAINABLE WELL PRODUCTS & SERVICES

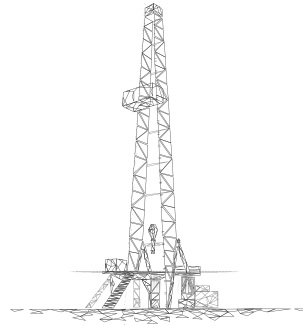
People, Planet, Profit



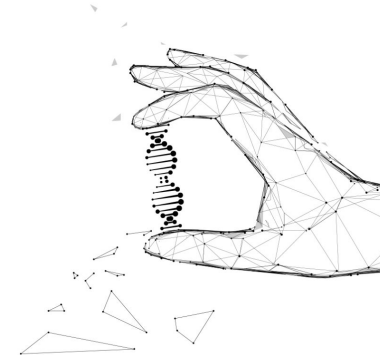
**SUSTAINABLE
DRILLING**



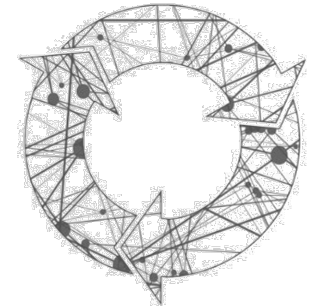
WELL FUNDAMENTALS



**FISHING &
INTERVENTION**



**RESERVOIR
MANAGEMENT**



**SUSTAINABILITY AUDITS &
ENGINEERING**

PRODUCT OVERVIEW

SUSTAINABLE WELL PRODUCTS



Pure Well Solutions offers a portfolio of sustainable well products & services with a commitment to innovation and sustainability.



Sustainability Audits & Engineering

Sustainability Audit Services

100% Measurable Sustainable Well Products



Sustainable Drilling

Patent Pending Technology

ZOOM DX Torsional Oscillation Control Tool

Next-generation reaming tool solutions

Hydraulic disconnect

Drilling jars



Well Fundamentals

SwivelEXy – Hydraulic Drill Pipe Swivel

Patent Pending

CasingEX – Weight Transfer System

CasingEC - Downhole Cementing Solutions

Auto Indexing Shoe

Stage Tool (15K pressure rated)

High load compression set packer

SOS (Selective Orientation Shoe)



Fishing & Intervention

Patent Pending Technology

Fishing

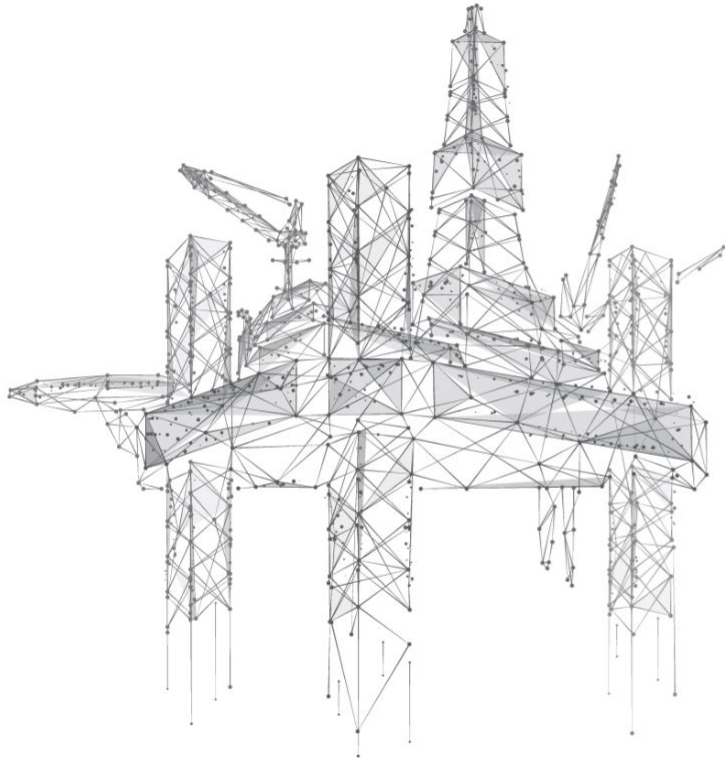
- ◆ ZOOM FX Torsional Oscillation Control
- ◆ ZOOM EF Torsional Oscillation Control
- ◆ Single or Double Acting Fishing jars

Coiled Tubing

- ◆ ZOOM CX Torsional Oscillation Control (Coiled Tubing)
- ◆ ZOOM CF Torsional Oscillation Control (Fishing)

Wellbore Cleanup

- ◆ Packers
- ◆ Scrapers
- ◆ Liner top tester HP
- ◆ Riser cleanout
- ◆ ZOOM CS Torsional Oscillation Control (Barium Sulfate Milling)



SUSTAINABLE DRILLING

In today's O&G sector, drilling technology has increased performance to new highs in drilling time frames. **PWS drives these results even further** with a new approach to measuring performance based on the belief that **reducing the energy** required to match or beat today's record-breaking time frames is **the true sustainable KPI for the future of the industry.**

The ZOOM

The World's Most Versatile Sustainable Oilfield Tool

The ZOOM Torsional Oscillation Control Tool is the most versatile sustainable tool in the industry. Driving performance in all operations from drilling to fishing to coiled tubing and well intervention--saving energy and increasing efficiency in new wells and breathing life back into old wells.



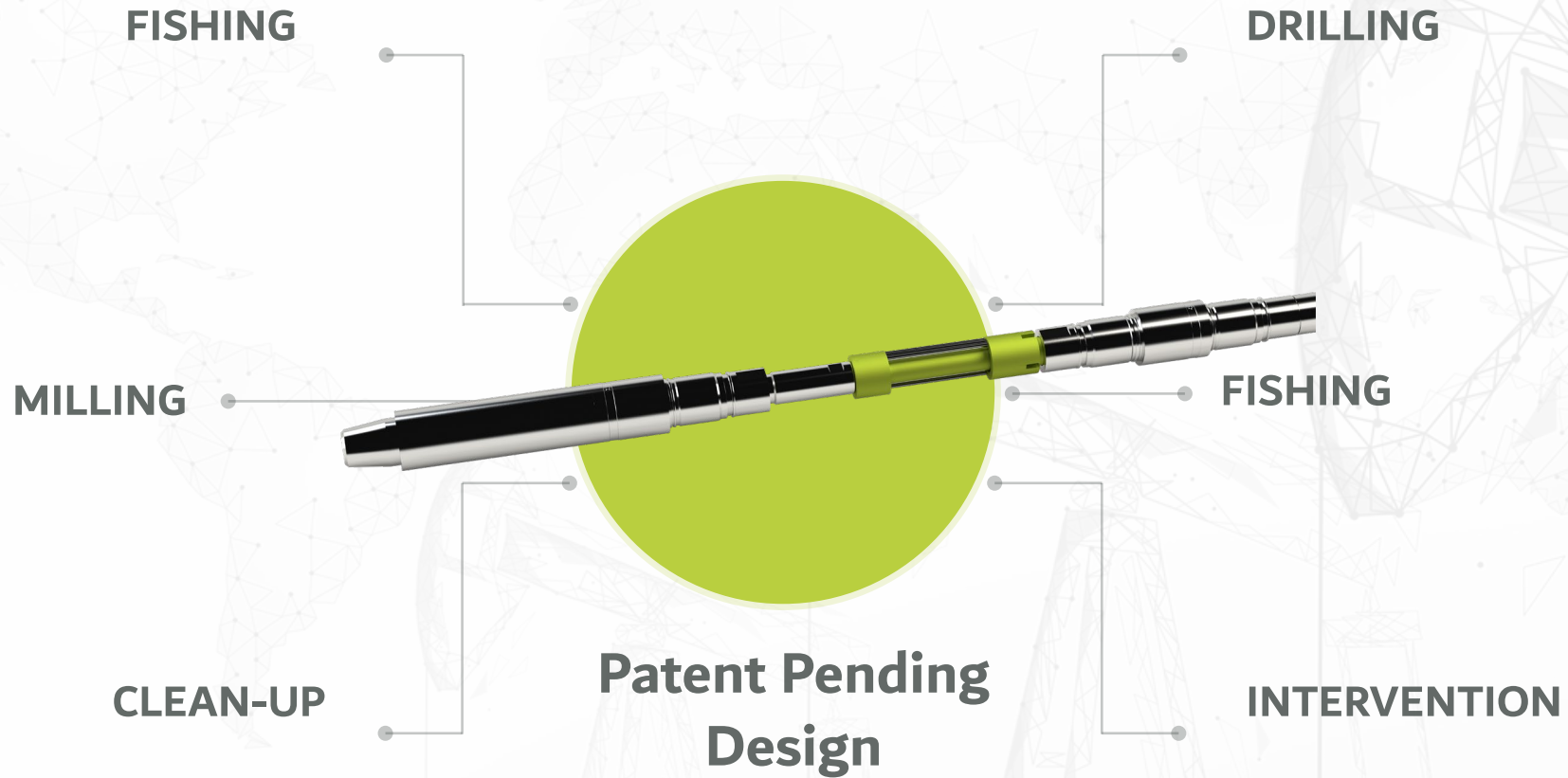
ZOOM APPLICATIONS

TORSIONAL OSCILLATION CONTROL TOOL



The World's Most Versatile Sustainable Oilfield Tool

Driving performance from scale and wellbore clean up, to frac plug drill out, sleeve manipulation for well shut off, to breathing new life into old wells.



ZOOMDX™

The World's Most Versatile Sustainable Oilfield Tool

Overview

The ZOOM DX™ generates vibration on the X-Y axis, thereby eliminating the need for a shock sub since no Z-axis impact vibration is created. Amplitude and frequency of energy propagation is controlled by changing the flow configuration within the tool according to planned flow rates, and the ZOOM DX operates with all conventional fluids or two-phase flow and is compatible with all standard drill pipe. The ZOOM DX is MWD and LWD friendly, which means that the ZOOM DX can be run in close proximity to them on the bottom hole assembly or multiple ZOOM DX can be adopted across the string.

Drilling

The Zoom DX is a robust, user-friendly tool that is added to the drillpipe to enhance rotary drilling performance under the most challenging of wellbore conditions when drilling horizontal wells. The Zoom DX uses a specially designed positive displacement motor (PDM) power section to rotate our bespoke mass oscillation system that enables the drill string, to break friction and maintain the string in forward momentum. In turn, this ensures smooth torque and RPM transfer through the string, mitigating the effects of string elasticity and the resultant stick slip and vibrations on the BHA. **Through the adoption of the ZOOM DX, clients require less energy to reach further, reducing the need for other complex solutions while maintaining pinnacle performance.**

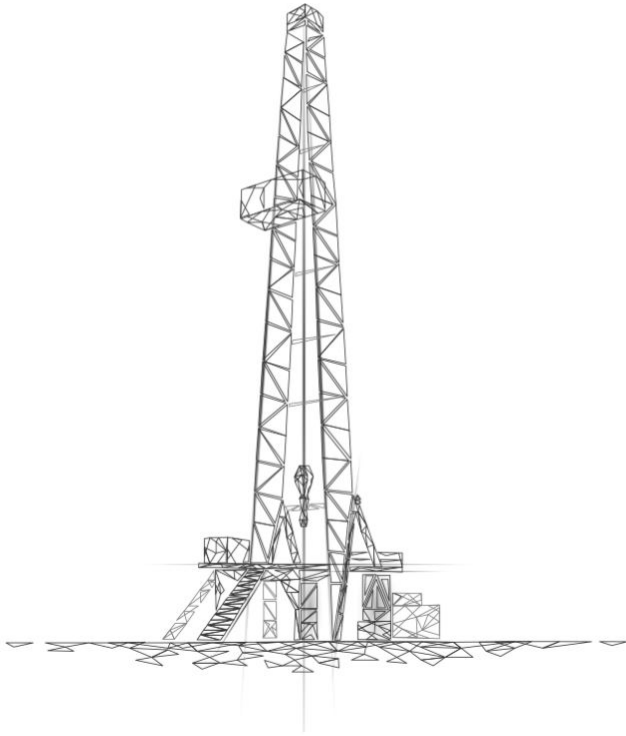
Benefits

- ▲ Minimal pressure drop (<180 psi) with no impact to MWD signals
- ▲ Weight transfer solution giving way to longer horizontal sections
- ▲ Removes string-generated stick/slip
- ▲ Increasing rates of penetration
- ▲ Reduced BHA wear and downhole tool failure rates
- ▲ Reduced possibility of differential sticking
- ▲ Reduced wellbore fatigue
- ▲ Cross-fluid compatibility
- ▲ Inhouse-designed placement program



OUR SUSTAINABILITY

Parameters	5" ZOOM	6-3/4" ZOOM
Flowrate	100-450 gpm	300-650 gpm
Pressure Drop	70-130 psi	70-140psi
Temp Range	HT 450° F	HT 450° F
Max Overpull	135,000 lbs	340,000 lbs
ZOOM Attenuation frequency	On request	On request
ZOOM Amplitude Range	On request	On request
Design		
Connection	As per client	As per client
Length	31 ft	31 ft
Weight	1,195 lbs	2,170 lbs
ID	1.8"	2"



FISHING & INTERVENTION

At PWS we have taken a fresh approach to fishing and intervention, bringing the tenets of sustainability into the mix. As with any fishing job, the primary objective is to retrieve items from the wellbore in an efficient and timely manner. To facilitate this end, **PWS has developed bespoke fishing equipment to aid in this challenge.** These tools range from our **Patented ZOOM FX** to that of a new range of fishing jars. **In the intervention space, we bring technology that breathes new life into existing wells, allowing our customers to capitalize on existing assets.**

ZOOM FX™

The World's Most Versatile Sustainable Oilfield Tool

Overview

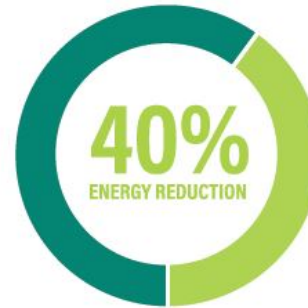
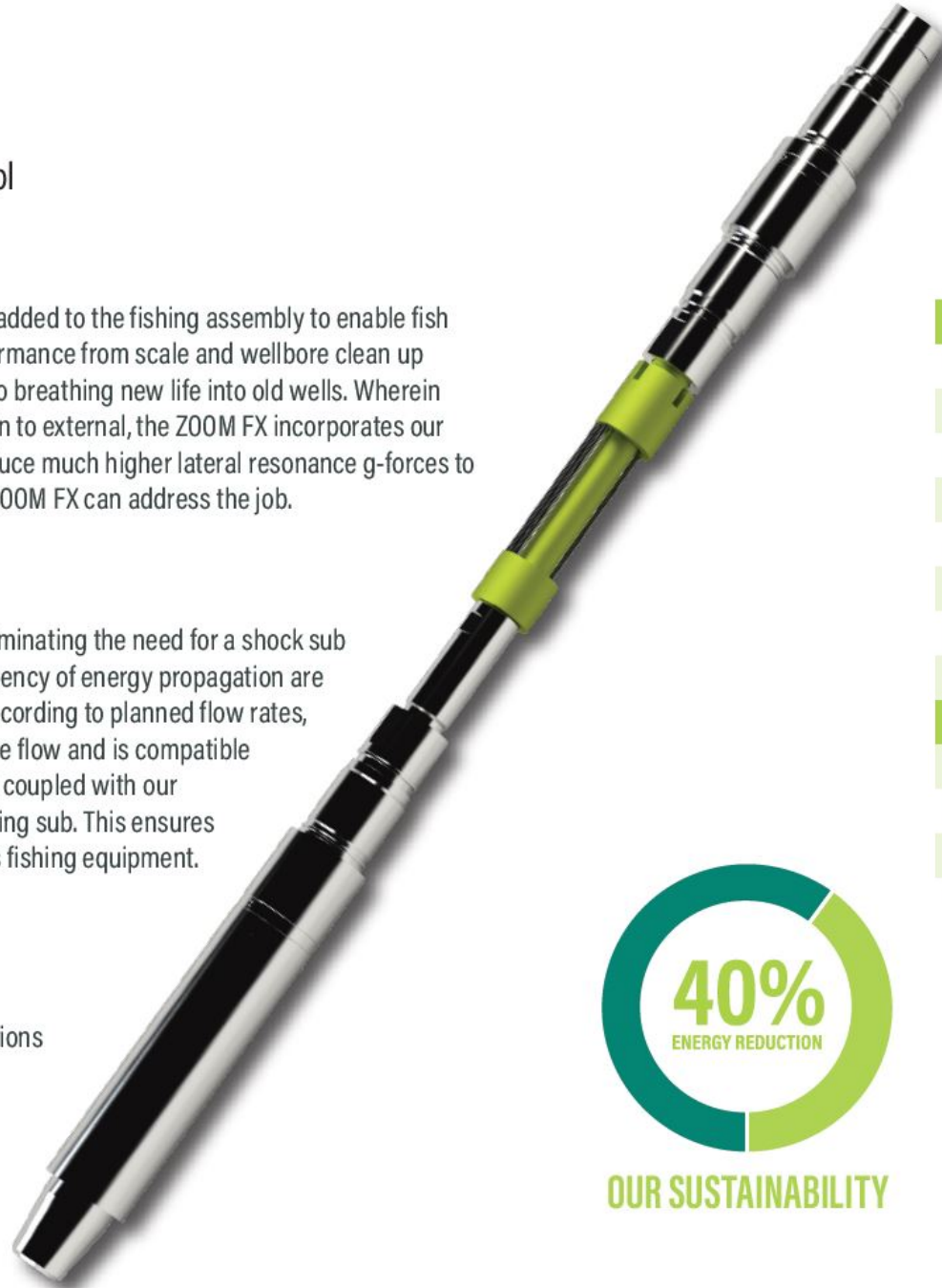
The ZOOM FX™ tool is our most robust, user-friendly tool that is added to the fishing assembly to enable fish excitation in the lateral component of movement—driving performance from scale and wellbore clean up to frac plug drill out, from sleeve manipulation for well shut off to breathing new life into old wells. Wherein today's conventional tools only operate on the internal excitation to external, the ZOOM FX incorporates our external lateral boost system. By doing so, the ZOOM FX can induce much higher lateral resonance g-forces to the fish. This ensures that no matter the fishing challenge, the ZOOM FX can address the job.

Operating Principles

The ZOOM FS/FX generates vibration on the X-Y axis, thereby eliminating the need for a shock sub since no Z-axis impact vibration is created. Amplitude and frequency of energy propagation are controlled by changing the flow configuration within the tool according to planned flow rates, and the ZOOM operates with all conventional fluids or two-phase flow and is compatible with all standard drill pipe. Both fishing ZOOM FS and FX can be coupled with our bespoke multi-activation circulating sub and high-tension rotating sub. This ensures the ZOOM FS/FX is fully compatible with today's and tomorrow's fishing equipment.

Benefits

- ▲ Minimal pressure drop (<150 psi)
- ▲ Weight transfer solution giving way to longer horizontal sections
- ▲ Variable impact lateral loads can be stacked
- ▲ No limitation from internal valves
- ▲ LCM friendly
- ▲ Cross-fluid compatibility
- ▲ Inhouse-designed placement program



OUR SUSTAINABILITY

Parameters	5" ZOOM FX
Flowrate	300-600 gpm
Pressure drop	< 150 psi
Temperature range	HT 450F
Maximum overpull	1M lbs
ZOOM FX attenuation frequency	On request
ZOOM FX amplitude range	On request
ZOOM FX G range max	8G/second
ZOOM FX G range	40G/second
Design	
Connection	As per client
Length	31 ft
Weight	1,195 lbs
ID	1.8"

FISHING AND INTERVENTION

ZOOM CS/CX™

The World's Most Versatile Sustainable Oilfield Tool

Overview

The ZOOM CS/CX™ tool is a custom downhole vibration device for use in applications requiring slim-hole concentric pipe or coiled tubing downhole tool deployment in extended reach/high angle wells.

The PWS ZOOM CS/CX tool allows the frictional drag between non-rotating downhole tool components and the wellbore wall to be negated, resulting in superior weight control and optimized energy transfer allowing clients to reach pinnacle performance.

Features

- ▲ Wellbore cleanup
- ▲ Specialized ZOOM CS utilized with our patented rotary scrubber—barium sulphate
- ▲ ZOOM CX, advanced scale removal. Pairing vibratory high amplitude on tubing with advanced scrapers
- ▲ Drilling out to new virgin well areas in high angle wells
- ▲ Milling operations

Benefits

The ZOOM CS/CX tool completes the through tubing market requirement for a reliable, effective energy saving system.

- ▲ Increased rates of penetration
- ▲ Reduced downhole tool damage
- ▲ Allows for greater downhole weight control
- ▲ Improves cleanup times as the ZOOM works to remove material
- ▲ Can be adopted to manipulate ICD sleeve shutoff control, which is a real challenge today



OUR SUSTAINABILITY

Parameters	2-7/8"	2-1/8"
Connection	2-3/8" PAC	1 1/2" AMMT
Length	12 ft	12 ft
Weight	205 lbs	199 lbs
Operational flow range	100-180 gpm	100-180 gpm
Frequency	16-28 Hz	16-28 Hz
Pressure pulse max	590 psi	590 psi

WELL FUNDAMENTALS

Whether you are operating onshore, offshore, or subsea, PWS will help you construct your well **safely** and in the most **sustainable** manner. Our solutions range from gas-tight equipment to advanced cementing solutions. **Our approach is rooted in the circular economy principles wherein our equipment is designed to meet our clients' well lifecycle requirements from raw material to application.** To meet full circular economy principles, PWS also sources raw material from steel mills that are processing today's P&A'd material.



PWS PRODUCT PORTFOLIO

WELL FUNDAMENTALS | SELECTIVE ORIENTATION SHOE (SOS)



SOS SELECTIVE ORIENTATION SHOE

PRODUCT OVERVIEW

SELECTIVE ORIENTATION SHOE (SOS)

Overview

Our casing accessory, the Selective Orientation Shoe (SOS), has been designed not only to overcome the most complex of hole conditions and challenges but to do so with optimum efficiency and total reliability as part of your bottom hole float shoe assembly. Our breakthrough technology ensures that no matter the obstacle, the SOS allows you to reach total depth. A key advantage to the SOS is its stroke length of 3.5-foot (min) which can also be increased at client request. With this key feature, space-out concerns are now a thing of the past.

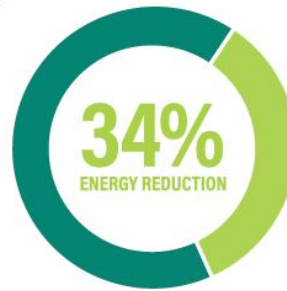
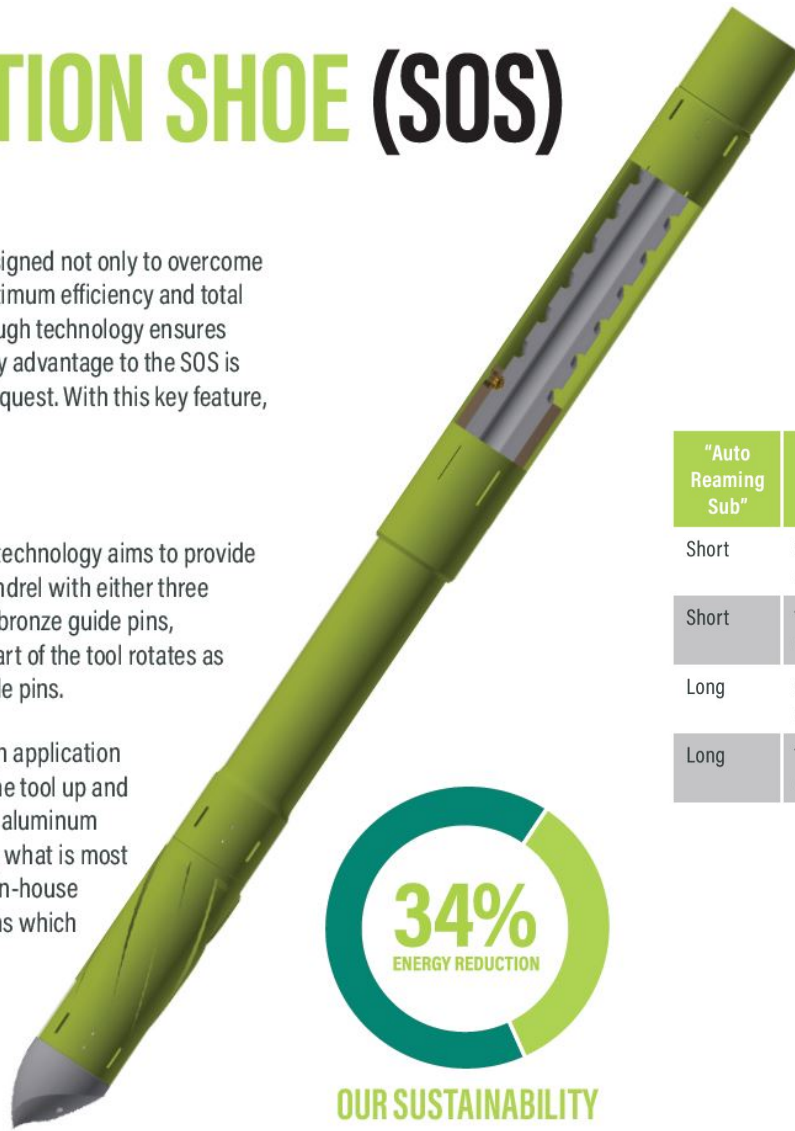
Design

The SOS is truly a one-of-a-kind reamer shoe casing accessory. The SOS technology aims to provide a simple but effective solution using industrial-grade aluminum alloy mandrel with either three or four machined spiral grooves running up and down three or four fixed bronze guide pins, depending on tool size. When an obstruction is encountered, the lower part of the tool rotates as weight is applied and the spiraled mandrel strokes through the fixed guide pins.

Customers can select between the standard SOS or SOS XL, depending on application and anticipated hole conditions. The SOS rotates five times per cycle of the tool up and down, and the SOS XL rotates ten times. Customers can choose either an aluminum alloy eccentric or a bronze tungsten carbide dressed nose, depending on what is most appropriate for the application. In addition to the conventional nose, our in-house engineers can work closely with our customers to provide custom designs which can be engineered and manufactured at short notice.

Features

- ▲ Allows long casing strings to be safely deployed in long horizontal sections
- ▲ Space-out concerns removed
- ▲ Independent rotation on tools
- ▲ Variants of reaming structures available
- ▲ Choice of nose
- ▲ HP, HF, and gas-tight float options available
- ▲ Available in long- or short-stroke operations

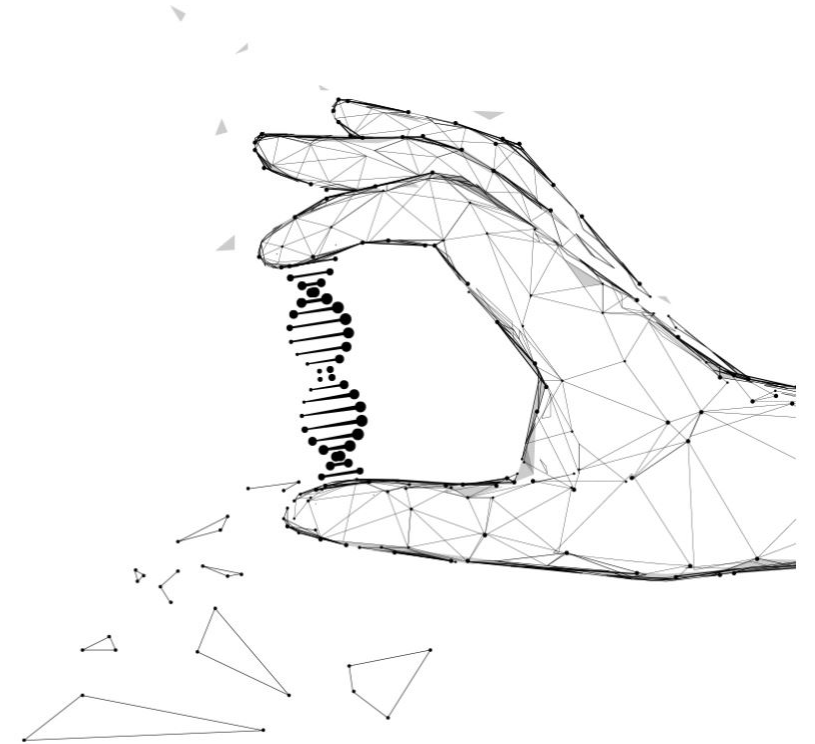


OUR SUSTAINABILITY

"Auto Reaming Sub"	Tool Size	Tool Body Max. O.D.	Shoe Max O.D.	Tool Length Open	Tool Length Closed	Stroke Length	Tool Rotations per Stroke	Torsional Strength
Short	9.625" (244mm)	10.625" (270mm)	12.000" (305mm)	11.08' (3.377m)	8.58' (2.615m)	30.000" (0.726m)	2.5	28k ft/lbs (38k Nm)
Short	13.375" (340mm)	14.375" (365mm)	14.375" (365mm)	14.375" (365mm)	14.375" (365mm)	30.000" (0.762m)	2.5	37k ft/lbs (50k Nm)
Long	9.625" (244mm)	10.625" (270mm)	12.000" (305mm)	13.60' (3.981m)	11.08' (3.377m)	60.00" (1.524m)	5	28k ft/lbs (38k Nm)
Long	13.375" (365mm)	14.375" (340mm)	16.000" (406mm)	13.60' (3.981m)	11.08' (3.377m)	60.000" (1.524m)	5	37k ft/lbs (50k Nm)

Reservoir Management

The PWS reservoir management division is focused on delivering high value solutions, allowing our customers to manage their reservoirs in near real time. We achieve this through our one-of-a-kind HPCE system. The HPCE allows customers to rapidly profile crude oil samples to determine composition and from which reservoir they are producing. We are also able to determine production water components from heavy metals to brines. A further benefit to the HPCE unit is **water analysis in real time!** This allows our customers to determine the components contained within **frac water** pre- and post-activity. By doing so, **we meet the sustainable window of effective fluid management.**



The Future of Oil & Gas Is Now

Faster
Real Time
Data Return with
No Impact on Production Rates

HPCE ANALYTICS

Overview



Water

- ◆ Production water
- ◆ Pre/Post ground water testing
- ◆ Heavy metals
- ◆ Polymers (de-waxer)



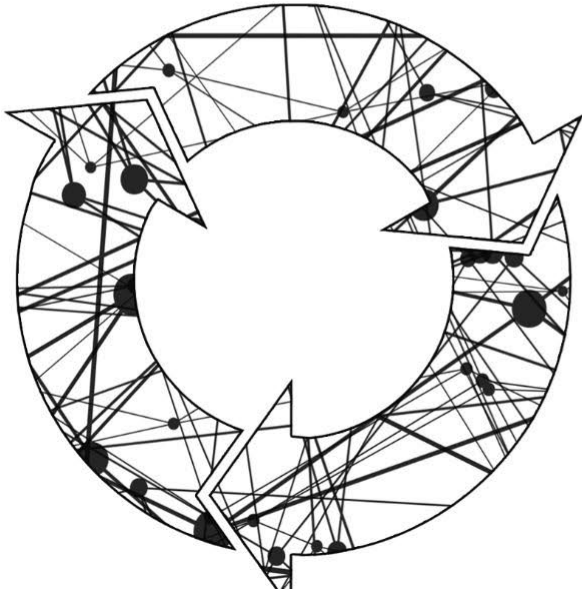
Oil

- ◆ Fingerprinting
- ◆ Composition
- ◆ Asphaltenes
- ◆ Polar & non polar molecule



Benefits

- ◆ Time saved
- ◆ Production rates maintained
- ◆ HSE risk reduced
- ◆ Real time decisions
- ◆ World leading expert support
- ◆ Environmental issues addressed
- ◆ Artificial lift optimized
- ◆ Costs lowered



Sustainability Audits & Engineering

Sustainability Audits

Offering **Sustainability Audit Services**, PWS will work with your organization to demonstrate a Sustainability Plan—ensuring your investors and customers that your business is operating with a mission to **reduce, reuse, recycle**.

Sustainability Engineering Services

PWS offers rapid-to-manufacturing prototype engineering services that address energy- and efficiency-saving challenges to meet sustainable development with the ability to manufacture around the world for in-country value.
