

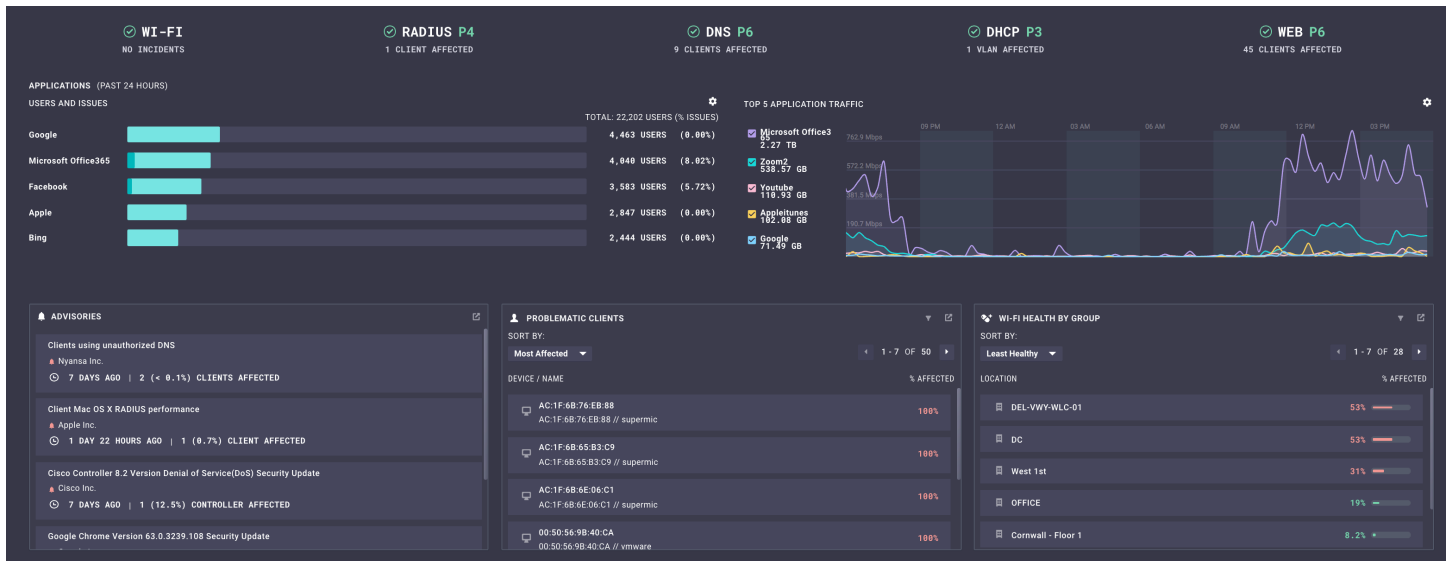
OnWatch NP

Powered by Nyansa*



OnWatch NP is a comprehensive, cloud-based network performance management and analytics solution.

OnWatch NP delivers end-to-end analysis of user performance from Client to Cloud by analyzing and correlating data across every layer of the network to help ensure the best possible user performance. No more hunting around to determine where network problems impacting user performance are hiding. OnWatch NP delivers big value from a leading vendor-agnostic SaaS Network Analytics Solution.



KEY BENEFITS

- Improve and quantify user/client experience
- Faster troubleshooting; proactive remediation
- Audit and validate network changes
- Zero impact to existing infrastructure
- Measure infrastructure ROI

USE CASES

- Client experience
- Wi-Fi monitoring
- Infrastructure planning
- Service desk
- Proactive remediation
- WAN utilization
- Access Point Management

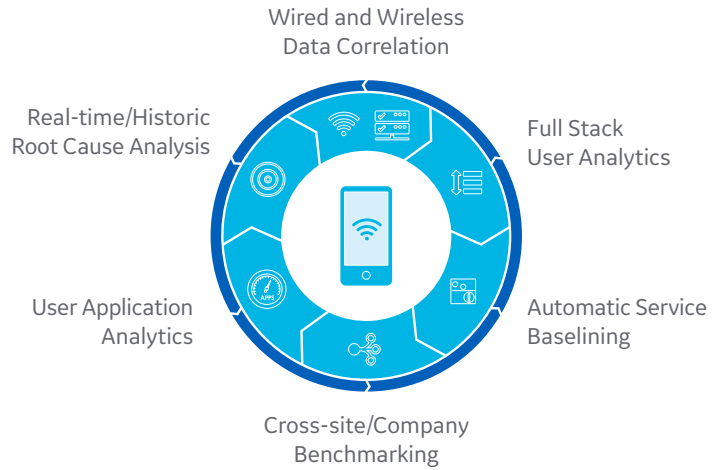
* Nyansa is a fast-growing innovator of advanced IT analytics software technology.

gehealthcare.com



IS ONWATCH NP RIGHT FOR YOU?

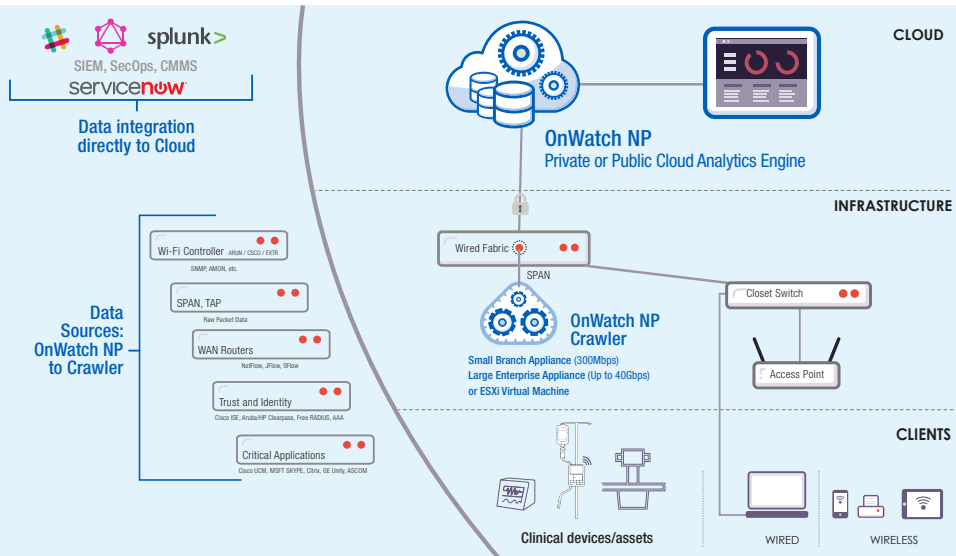
- How do you monitor the Cisco®, Aruba™, Extreme Networks™ or Juniper Networks™ in your hospital and clinics?
- Do you need insight into how many medical, IOT, registered, and guest devices are connecting to your hospital networks?
- Looking for an easy way to see users across multiple locations/sites?
- How does your current tool measure user experience?
- How are your key enterprise applications performing on your network?
- How do you assure that your clinical and life critical networks are behaving as designed?



EFFORTLESS DEPLOYMENT

- No impact to existing network performance or topology
- Easy deployment with timely access to comprehensive information

FEATURE/FUNCTION	ONWATCH NP
Per client L1-7 transaction analysis	●
Full stack wired/wireless analytics and correlation	●
Analytics filtering by location, SSID, RF band, O/S	●
Custom reports and auto SMS and email alerts	●
UC/SaaS and user-defined application analytics	●
Automatic service baselining	●
Cross-site, cross-company benchmarking	●
API support	●
NetFlow support	●



© 2019 General Electric Company – All rights reserved.

GE Healthcare reserves the right to make changes in specifications and features shown herein, or discontinue the product described at any time without notice or obligation. Contact your GE Healthcare representative for the most current information. GE and the GE Monogram are trademarks of General Electric Company. GE Healthcare, a division of General Electric Company. All other third party trademarks are the property of their respective owners. GE Medical Systems, Inc., doing business as GE Healthcare.

September 2019
JB69138XXa

