

Asset Management

RTS simplifies asset management by providing complete inventory and logistics services while offering digital access and transparency to every step of the process. Our Hawkeye™ DMS portal offers real-time access to inventory data and digitizes all material movements to ensure accuracy and maintain proper records. Using RTS's unique resources, customers can minimize excess working capital by efficiently redeploying or disposing of assets.

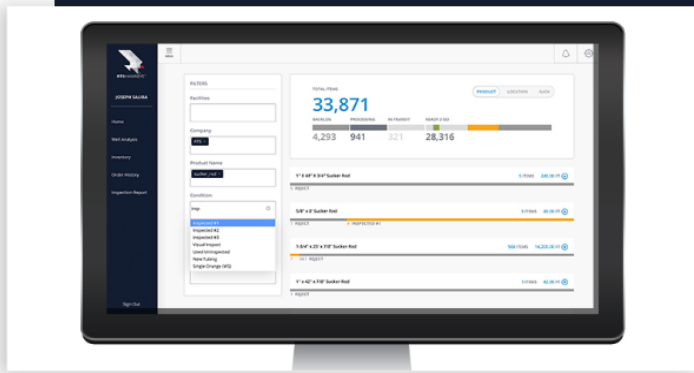
- Digital Inventory
- Logistics and Just-In-Time
- Disposition and Purchase

[Read more →](#)

Digital Inventory

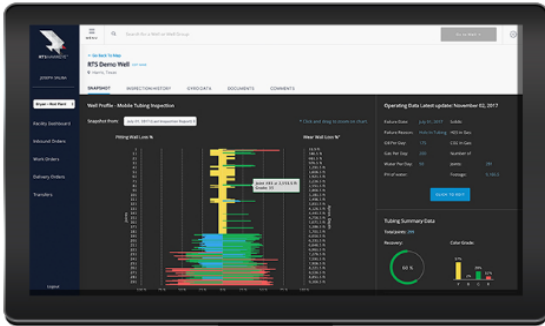
Hawkeye™ DMS is RTS's proprietary inspection, data and inventory management system built specifically to meet the needs of our oil & gas customers. For the first time, Hawkeye™'s online portal seamlessly combines information for personnel involved in materials management, supply chain, production engineering and field operations. No other platform in the market is able to more accurately track and return information, while doing so with unmatched user friendliness.

At RTS, we take inventory control and data management seriously - which is why the Hawkeye™ system is fully integrated into our work flow, ensuring that information is up to date and accurate.





Hawkeye™ is RTS' proprietary data-management platform that transforms the way information is collected, organized, and analyzed for our downhole integrity services. Customers are able to access this powerful suite of tools 24/7 online.



and manipulate data from a variety of inspection sources, including wellsite and in-plant inspections for tubing and sucker rods. Furthermore, Hawkeye™ seamlessly integrates inspection results with other critical operating information, including downhole conditions and well design, to provide a comprehensive view of downhole performance.

Data Trending and Benchmarks

Innovation at RTS goes beyond digitization and visualizations. Hawkeye™ allows customers to analyze inspection data over time and against relevant benchmarks and well metrics. These features are made more robust through our




Technology Innovation in the Field

Technology Innovation in the Field Innovation at RTS goes beyond data. We bring a differentiated approach to equipment layout and design, inspection standards and training and development. These enhancements ensure that our inspectors are using the latest technology and are at their best when working on your wellsites or at one of our full-scale facilities. RTS believes that training and developing top quality employees translates to superior results and performance for our customers.



©2017 Rod and Tubing Services.

 1(979) 775-5000

[Careers](#) [Contact](#)

Wellsite Tubing Inspection

RTS performs rig floor electromagnetic inspection (EMI) as tubing is pulled out during well servicing. The EMI unit is bolted on top of the wellhead and allows the EMI operator to quickly identify and classify defective pipe, based on API RP 5C1 (or customer specifications), that should be removed from the string. EMI inspection detects tubing wall loss and related surface flaws such as corrosion, pitting, and rod wear that can lead to future well failures.

After inspection, RTS customers have access to inspection reports and our analytics tools on Hawkeye™ DMS. By combining the critical elements of the data puzzle in one place, Hawkeye™ enhances failure analysis and drives toward a solution.

In addition to utilizing the latest EMI technology, RTS inspectors go through a rigorous apprenticeship program followed by ASNT Level II certification.



Sign in

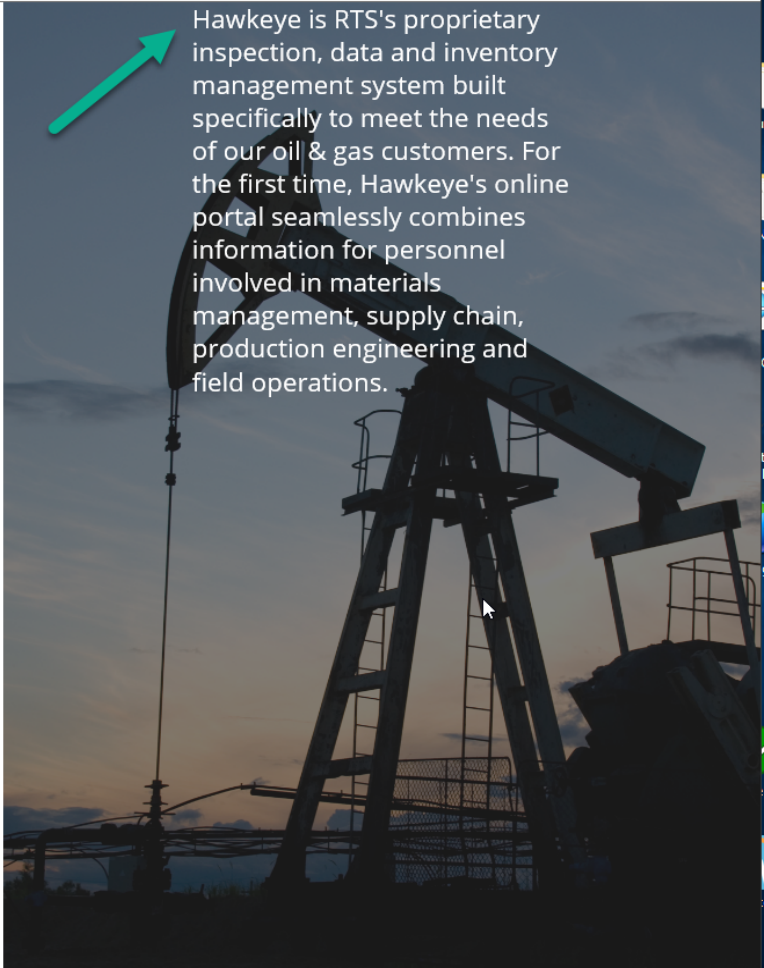
EMAIL

PASSWORD

 Remember me

[Forgot your password?](#)

If you require a username and password, please email your request to hawkeye@rtsinspection.com



Hawkeye is RTS's proprietary inspection, data and inventory management system built specifically to meet the needs of our oil & gas customers. For the first time, Hawkeye's online portal seamlessly combines information for personnel involved in materials management, supply chain, production engineering and field operations.

