

PASSHUB FOR BUSINESS

Making convenient collaboration secure

In today's world domineered by usernames and passwords, businesses need to share credentials and files with internal employees and external customers quickly and easily. But sharing can't come at the expense of security.

That's why we created PassHub for Business.

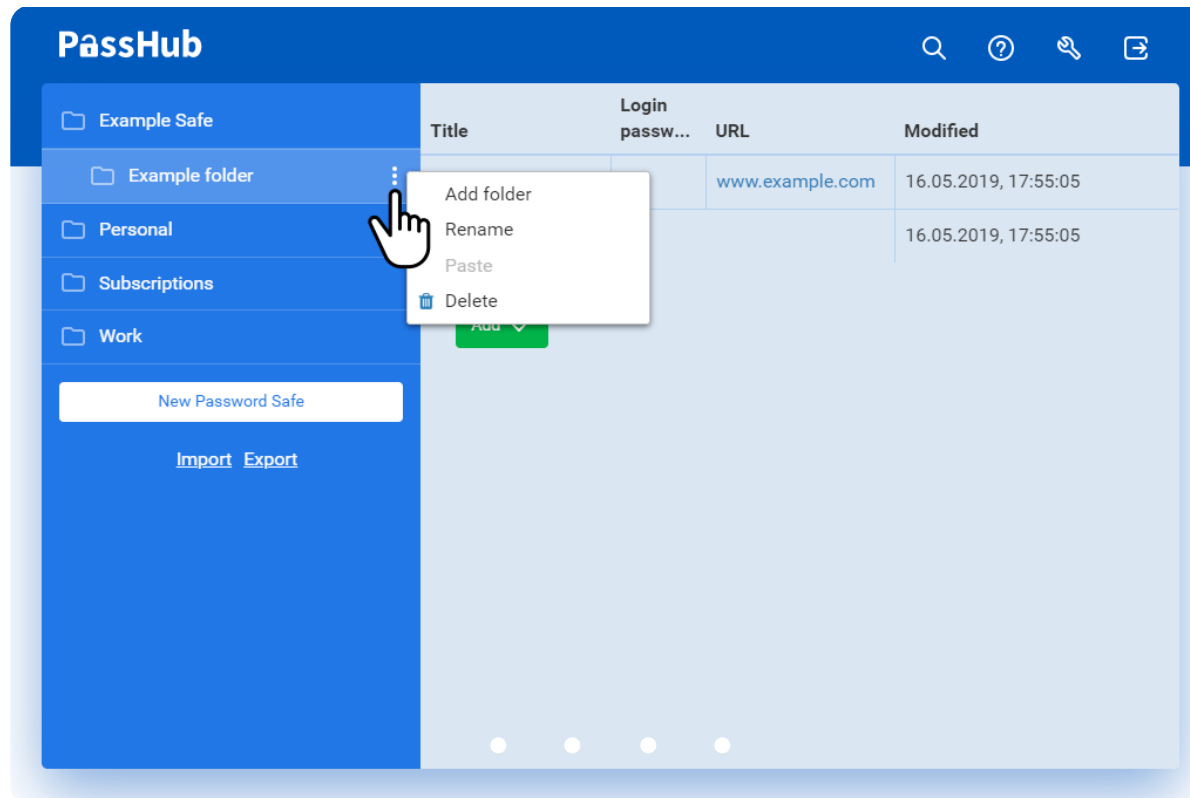
Combining client-side encryption with intuitive data sharing, PassHub for Business is a dedicated platform for secure collaboration.

Contact Us

PASSHUB ENABLES YOUR BUSINESS TO

Securely store business credentials, notes and files

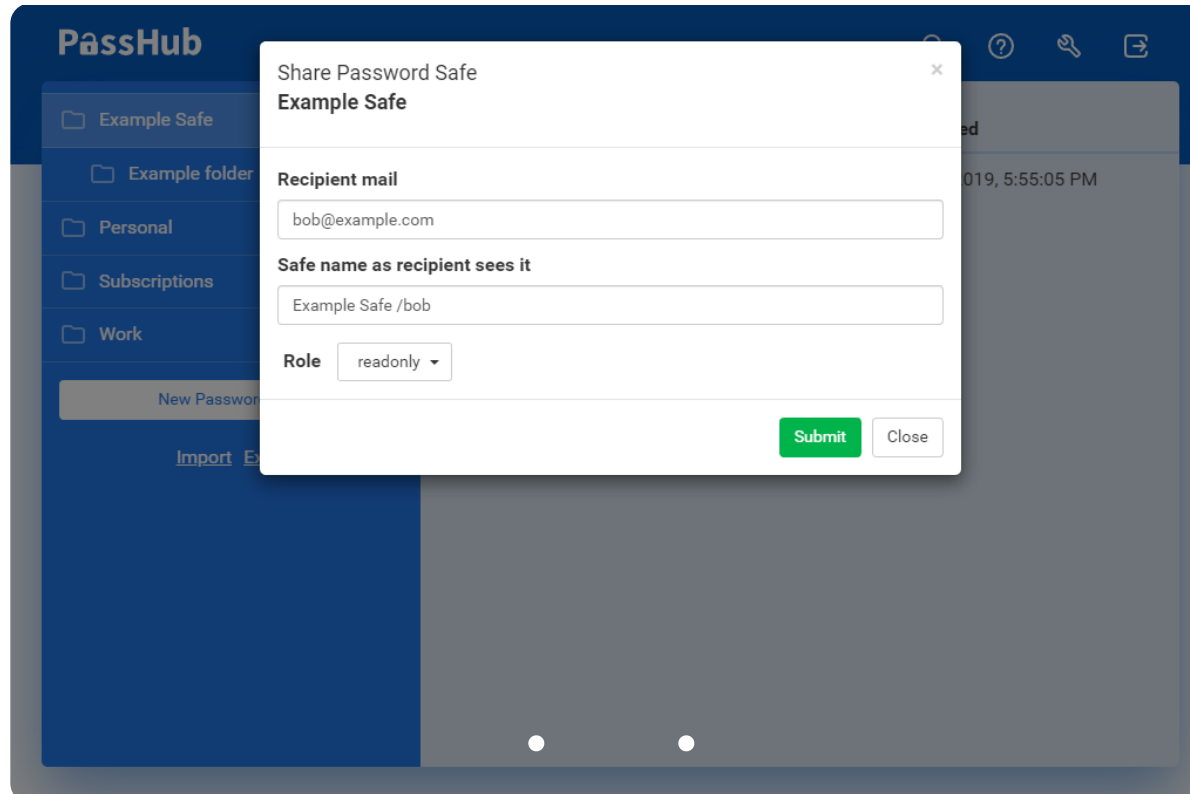
- 1 Organize your data with PassHub Safes--top-level folders and subfolders
- 2 Search and find records with our robust search tool
- 3 Generate strong passwords according to your business requirements
- 4 Backup/restore your data



Collaborate with team and clients



- 1 Share individual safes with team members, partners, and clients
- 2 Use granular access to keep all information on a need-to-know basis
- 3 Leverage end-to-end encryption so administrators cannot access user data, eliminating potential for insider threats



Manage user access

- 1 Across the entire PassHub service:
Invite users to PassHub

Track user activities

Delete user accounts

2

Within each PassHub safe:

Assign roles to safe users (read only, editor, admin)

Revoke user access to the safe, while maintaining access for your organization

PassHub

User Management

Users: 6
Safes total: 24
Safes shared: 4
MAIL DOMAINS: yourcompany.com

✖ delete a user [Mail White list](#)

✔ toggle admin rights

	Admin	Mail	Safes total	Safes shared	Seen (America/New_York)
	✔	admin@yourcompany.com	4	0	That's You
✖	✔	alice@gmail.com	6	4	5/16/2019, 7:15:36 PM
✖	✔	bob@yourcompany.com	6	2	4/22/2019, 7:39:42 PM
✖	✔	eve@yourcompany.com	6	2	4/22/2019, 7:56:23 PM
✖	☐	mike@partnercompany.com	4	1	12/26/2018, 9:02:52 PM

Migrate from KeePass



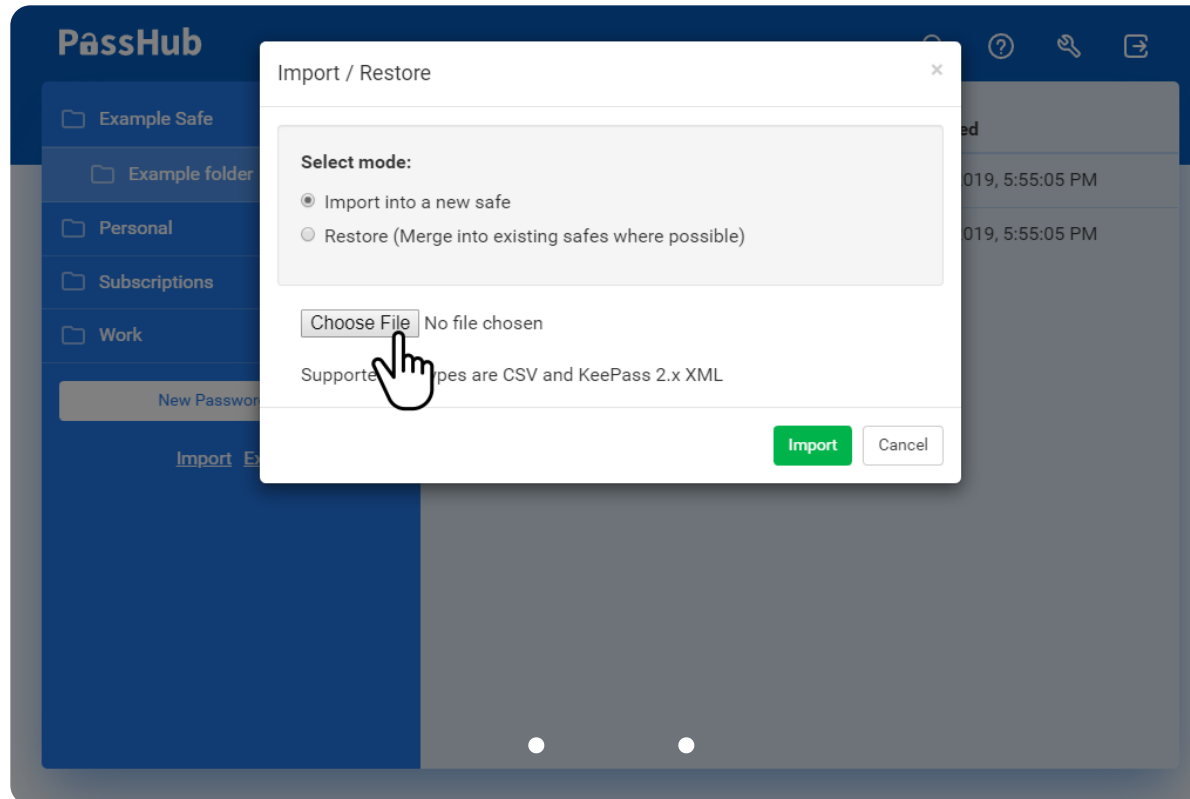
Import your KeePass data to finally start sharing business



credentials and files (e.g. SSL certificates) with your team



Export your PassHub data for backup in your cloud



FLEXIBLE DEPLOYMENT OPTIONS TO FIT ANY ENVIRONMENT

PassHub for Business is available as a self-hosted or SaaS PassHub

SELF-HOSTED PASSHUB

Deployed on your company's servers, this option gives you full control over PassHub source code and sensitive user data.

Full-featured server installation including SMTP server, SSL certificates, distributed MongoDB database, general security protection, updates and support.

PassHub for Business is an open source project which itself is free for you to use within your organization's own infrastructure. However, to make PassHub work, you will need a subscription to the [WWPass Authentication Service](#).

[Get the source code from GitHub](#)

SAAS PASSHUB

Passhub for Business may also be deployed as a SaaS version, hosted by Passhub.net. This approach eliminates the burden of server configuration and support, while still letting you control user accounts on the company's PassHub account.

To get a dedicated SaaS PassHub for your business at a domain of your choice, but have us host it, is \$100/month for unlimited users plus 500GB of storage.

Start my free 30-day trial

TAILORED PASSHUB

Customized features to meet the unique needs of your organization

Contact Us

WHY CHOOSE PASSHUB FOR BUSINESS



Client-side encryption



Strong multifactor

(AES-256-GCM and RSA-2048)

authentication with no master password



Unlimited storage and sharing



Easy sharing between team members



Compatible with any device without requiring software installation



Automatic synchronization between team members and all user devices



Installed on corporate servers, keeping server code under full enterprise control

Compatible with KeePass

FREQUENTLY ASKED QUESTIONS (FAQ)

Where is data stored?



How many servers do I need to run PassHub?



What Database Management System (DBMS) does PassHub use?



Can I use different DBMS?



Do you use a “Master Password” to encrypt the data?



Can I use PassHub without WWPass multi-factor authentication?



Can PassHub be accessed without internet?



Can I backup password data?



Can I load credentials from other password managers?



How much does PassHub for Business cost?



Can employees of PassHub, WWPass, or my systems administrators ever gain access to passwords and other secret data?



Is PassHub just a password storage, or can it be used for other purposes?



Powered by WWPass

[Terms of use](#)

[Contact us](#)