

# LabLINK

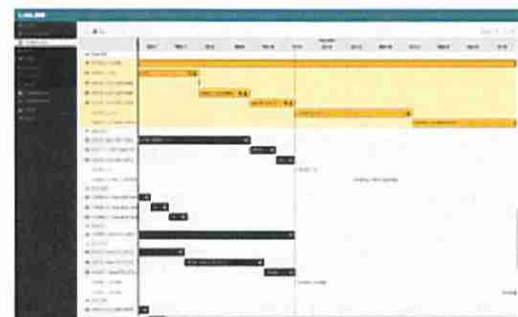


Test Smarter.

## Laboratory Information Management System

LabLINK is a modular Laboratory Information Management System with machine interface capability consisting of:

1. **Test Request Module:** User configurable interface for creating, copying, assigning and tracking test requests
2. **Scheduling Module:** Automated and dynamically updated GANTT-style test scheduling
3. **Lab Monitor Module:** Automated graphical real-time and historical performance metrics including machine status, machine efficiency and individual test efficiency
4. **Maintenance Module:** Customizable and centralized equipment maintenance views and alerts



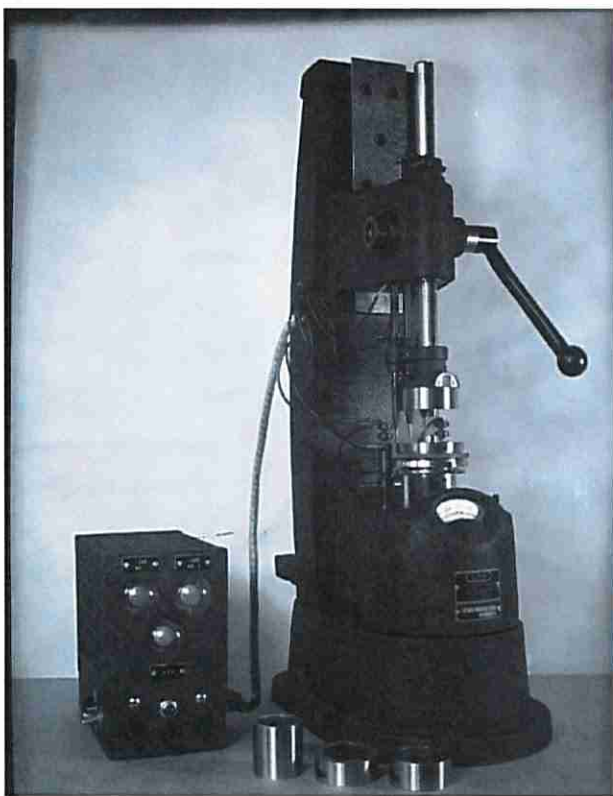
[www.linkeng.com](http://www.linkeng.com)

**Machines**

Springs - Model DSUL Unit



Classic SUL



Model 3900 NVH Dyno



### Installation

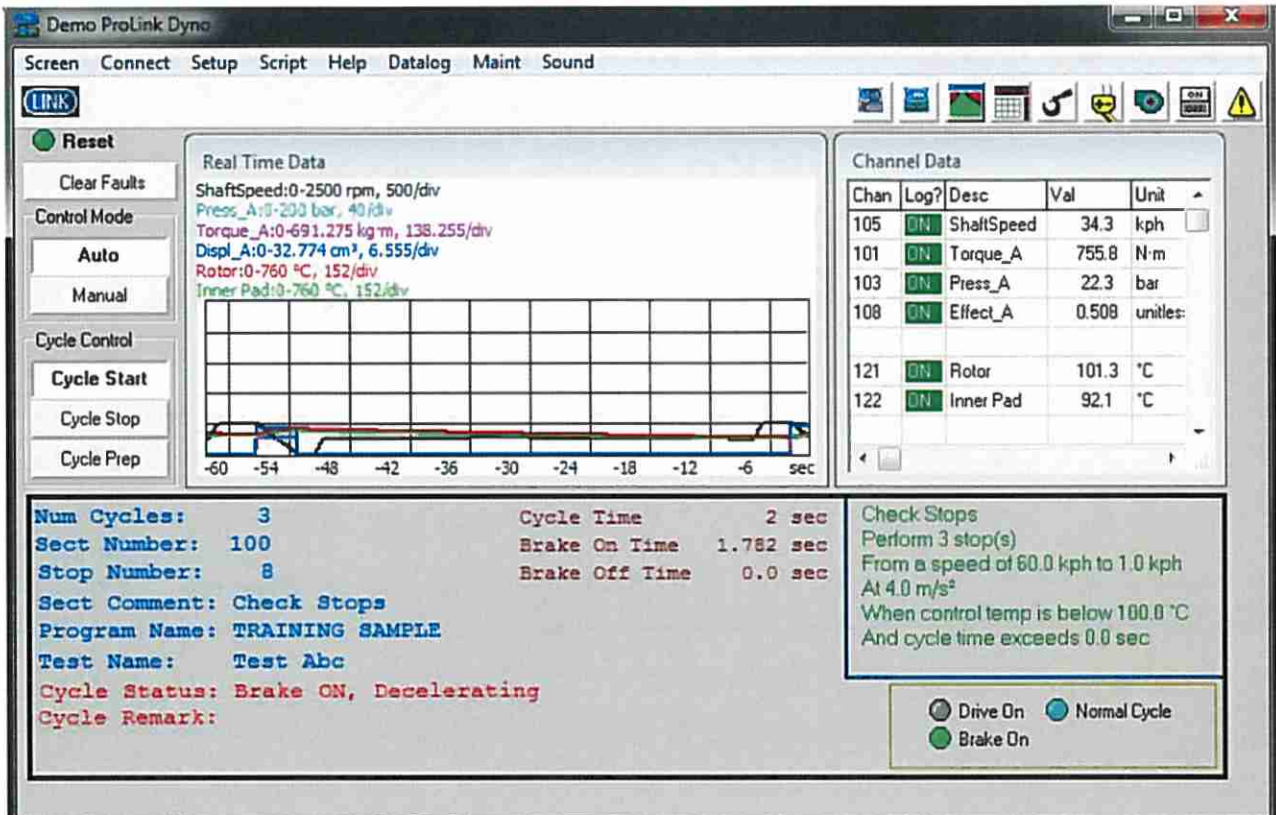
LINK Technicians installing a LINK machine (Logo on technician's shirt)



## Computer hardware and software

LabLINK , ProLINK

ProLINK software:



# LabLINK



## Laboratory Information Management System

LabLINK is a modular Laboratory Information Management System with machine interface capability consisting of:

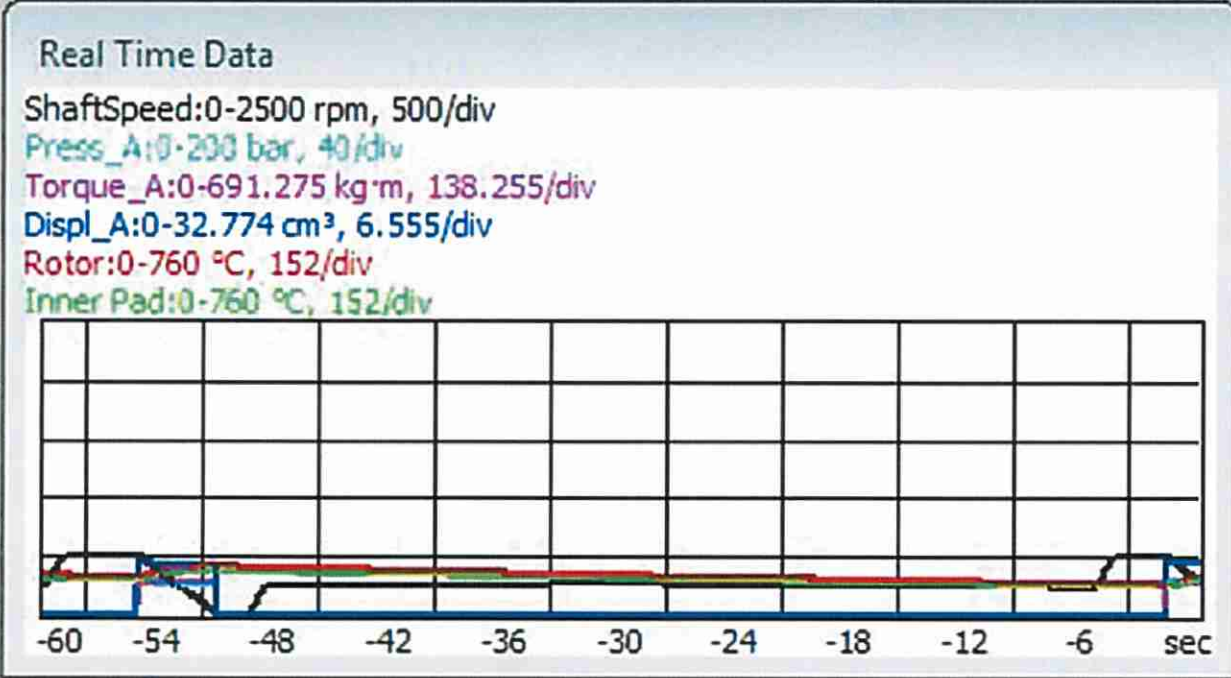
1. **Test Request Module:** User configurable interface for creating, copying, assigning and tracking test requests
2. **Scheduling Module:** Automated and dynamically updated GANTT-style test scheduling
3. **Lab Monitor Module:** Automated graphical real-time and historical performance metrics including machine status, machine efficiency and individual test efficiency
4. **Maintenance Module:** Customizable and centralized equipment maintenance views and alerts



[www.linkeng.com](http://www.linkeng.com)



- Start
- Stop
- Prep
- Control
- Qual
- Mode
- Faults



Channel Data

Chan	Log?	Desc	Val	Unit
105	ON	ShaftSpeed	34.3	kph
101	ON	Torque_A	755.8	N·m
103	ON	Press_A	22.3	bar
108	ON	Effect_A	0.508	unitle
121	ON	Rotor	101.3	°C
122	ON	Inner Pad	92.1	°C

Cycles: 3  
 Number: 100  
 Number: 8  
 Cycle Time 2 sec  
 Brake On Time 1.782 sec  
 Brake Off Time 0.0 sec

Comment: Check Stops  
 Cam Name: TRAINING SAMPLE  
 Name: Test Abc

Status: Brake ON, Decelerating  
 Remark:

Check Stops  
 Perform 3 stop(s)  
 From a speed of 60.0 kph to 1.0 kph  
 At 4.0 m/s<sup>2</sup>  
 When control temp is below 100.0 °C  
 And cycle time exceeds 0.0 sec

Drive On     Normal Cycle  
 Brake On