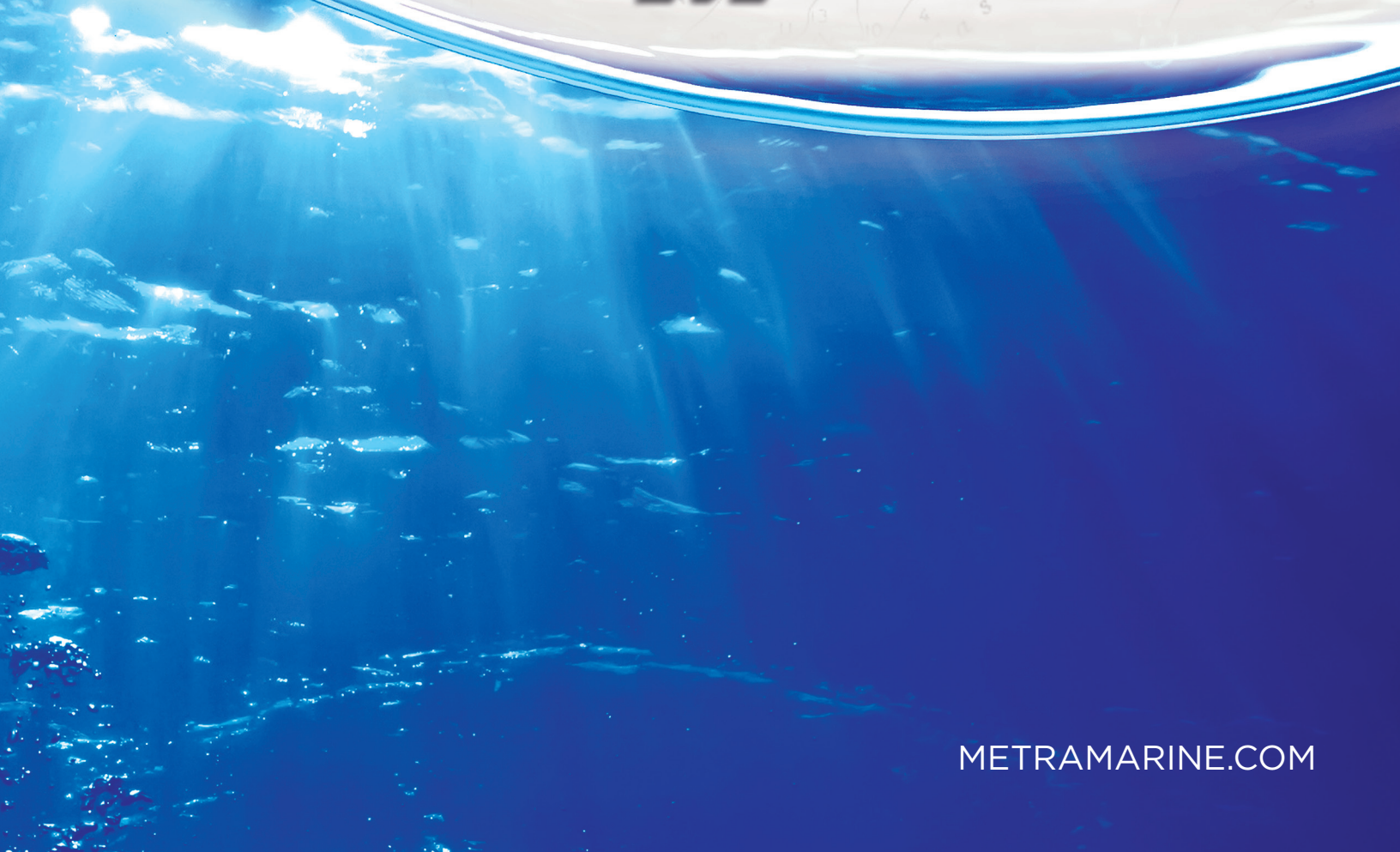




Metra
Marine



LED LIGHTBARS



8" LED LIGHTBAR DUAL ROW

- Wattage: 36W
- Raw Lumens: 2880
- Lux @ 10M: 215
- Current Consumption @ 13.8V: 1.9 A
- IP Rating: IP68
- Hole Dimensions:
Bracket Turned In: 7.25"
Brackets Turned Out: 9.5"

HE-MDR8

★ IP68 ★
CERTIFIED



14" LED LIGHTBAR DUAL ROW

- Wattage: 72W
- Raw Lumens: 5760
- Lux @ 10M: 466
- Current Consumption @ 13.8V: 3.7 A
- IP Rating: IP68
- Hole Dimensions:
Bracket Turned In: 13.5"
Brackets Turned Out: 15.75"

HE-MDR14

★ IP68 ★
CERTIFIED



14" LED LIGHTBAR SINGLE ROW

- Wattage: 60W
- Raw Lumens: 4800
- Lux @ 10M: 450
- Current Consumption @ 13.8V: 3.7 A
- IP Rating: IP68
- Hole Dimensions:
Bracket Turned In: 13.5"
Brackets Turned Out: 15.75"

HE-MSR14

★ IP68 ★
CERTIFIED



20" LED LIGHTBAR DUAL ROW

- Wattage: 108W
- Raw Lumens: 8640
- Lux @ 10M: 612
- Current Consumption @ 13.8V: 5.7 A
- IP Rating: IP68
- Hole Dimensions:
Bracket Turned In: 19.5"
Brackets Turned Out: 21.75"

HE-MDR20

★ IP68 ★
CERTIFIED

NEW



WARNING: This catalog does not advise whether a State of California Proposition 65 warning is required for a particular item of merchandise. To learn whether a particular item of merchandise requires a California Proposition 65 warning, please be sure to look up and read the particular merchandise's listing on Metra's website www.MetraOnline.com, as well as read the particular merchandise's packaging. When a California Proposition 65 warning is present on Metra's website listing for the particular merchandise, or on the particular merchandise's packaging, a compliant California Proposition 65 warning is to be provided to the purchasing California consumer prior to the sale of the particular merchandise.

LED LIGHTBARS

3



34.88"W x 4.8"H

30" LED LIGHTBAR DUAL ROW

CURVED

- Wattage: 180W
- Raw Lumens: 14400
- Lux @ 10M: 625
- Current Consumption @ 13.8V: 9.5 A
- IP Rating: IP67
- Hole Dimensions:
Bracket Turned In: 31"
Brackets Turned Out: 33.5"

HE-MDRC30



44.76"W x 4.8"H

42" LED LIGHTBAR DUAL ROW

CURVED

- Wattage: 240W
- Raw Lumens: 19200
- Lux @ 10M: 780
- Current Consumption @ 13.8V: 12 A
- IP Rating: IP67
- Hole Dimensions:
Bracket Turned In: 41"
Brackets Turned Out: 43.5"

HE-MDRC42



52.83"W x 4.8"H

50" LED LIGHTBAR SINGLE ROW

CURVED

- Wattage: 288W
- Raw Lumens: 23040
- Lux @ 10M: 915
- Current Consumption @ 13.8V: 14.3 A
- IP Rating: IP67
- Hole Dimensions:
Bracket Turned In: 49"
Brackets Turned Out: 51.25"

HE-MDRC50



56.72"W x 4.8"H

54" LED LIGHTBAR DUAL ROW

CURVED

- Wattage: 300W
- Raw Lumens: 24960
- Lux @ 10M: 1050
- Current Consumption @ 13.8V: 16 A
- IP Rating: IP68
- Hole Dimensions:
Bracket Turned In: 52.75"
Brackets Turned Out: 55.25"

HE-MDRC54

INPUT VOLTAGE: 10-30V DC

COLOR TEMPERATURE: 6000K

BEAM PATTERN COMBO:
Flood (90°) & Spot (8°)

HOUSING MATERIAL:
Die-cast aluminum

COLOR: White coating with UV

MEMBRANE: Gore™

LENS MATERIAL: PC

MOUNTING BOLT DRILL: 0.25"

MOUNTING BRACKET:
Die-cast aluminum

HEIGHT OF LIGHT BAR: 3"

DEPTH OF LIGHTBAR: 3.5"

ELECTRONICS:
Integrated-epoxy encapsulated

HARDWARE: Stainless 316

OPERATING TEMPERATURE:
-40 °C to +60 °C

PROTECTION: Reverse polarity

CUBE LED LIGHTS

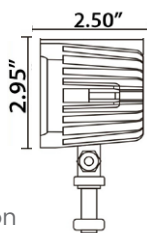


★ IP68 ★
CERTIFIED

2" CUBE LIGHT 1 LED

- Wattage: 10W
- Raw Lumens: 600
- LUX @ 10M: 12
- Current Consumption @ 13.8V: 0.7A
- IP Rating: IP68
- Beam Pattern: 40° Flood
- Mounting Bracket: Stainless Steel

HE-MCL1



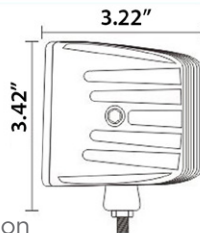
★ IP68 ★
CERTIFIED

3" CUBE LIGHT 4 LED

- Wattage: 12W
- Raw Lumens: 960
- LUX @ 10M: 17
- Current Consumption @ 13.8V: 0.9A
- IP Rating: IP68
- Beam Pattern: 90° Flood
- Mounting Bracket: Stainless Steel

HE-MCL2 Single Light
HE-MCL22PK 2 Light Pack

*HE-DLWH1 Dual Light Wiring Harness
Included with 2 pack*



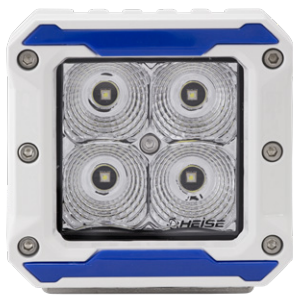
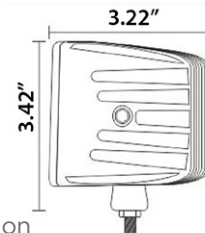
★ IP68 ★
CERTIFIED

3" CUBE LIGHT 6 LED

- Wattage: 18W
- Raw Lumens: 1440
- LUX @ 10M: 18
- Current Consumption @ 13.8V: 1.2A
- IP Rating: IP68
- Beam Pattern: 90° Flood
- Mounting Bracket: Stainless Steel

HE-MCL3 Single Light
HE-MCL32PK 2 Light Pair

*HE-DLWH1 Dual Light Wiring Harness
Included with 2 pack*

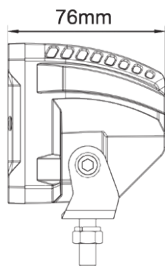


★ IP68 ★
CERTIFIED

3" HIGH OUTPUT CUBE LIGHT 4 LED

- Wattage: 12W
- Raw Lumens: 960
- LUX @ 10M: 34
- Current Consumption @ 13.8V: 0.7A
- IP Rating: IP68
- Beam Pattern: 90° Flood
- Mounting Bracket: Stainless Steel

HE-MHCL2



ACCESSORIES INCLUDED

ACCENT CAPS

Customize your marine light with color accent caps included!



PIGTAIL

Included with all Marine High Output Cube LED Lights



CUBE PROTECTIVE LENS COVERS

- Poly-carbonate protective lens
- Use with Heise 3 inch cube lights (Except HE-MHCL2)

HE-CLLA Amber | **HE-CLLBK** Black | **HE-CLLC** Clear

HE-CLLR Red | **HE-CLLG** Green | **HE-CLLBL** Black



FLUSH MOUNT CUBE LED LIGHTS

5



★IP68★
CERTIFIED

3" FLUSH MOUNT CUBE LIGHT 4 LED

- Wattage: 12W
- Raw Lumens: 960
- LUX @ 10M: 17
- Current Consumption @ 13.8V: 0.9A
- IP Rating: IP68
- Beam Pattern: 90° Flood
- Mounting Bracket: Flush Mount

HE-MFMCL2

Includes Gasket and Cut Out Template



★IP68★
CERTIFIED

3" FLUSH MOUNT CUBE LIGHT 6 LED

- Wattage: 18W
- Raw Lumens: 1440
- LUX @ 10M: 18
- Current Consumption @ 13.8V: 1.2A
- IP Rating: IP68
- Beam Pattern: 90° Flood
- Mounting Bracket: Flush Mount

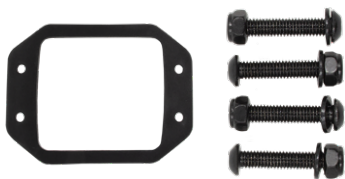
HE-MFMCL3

Includes Gasket and Cut Out Template

ACCESSORIES INCLUDED

GASKETS AND SCREWS

- Included with all flush mount cube LED lights



HYBRID SYSTEM

THE BEST OF BOTH WORLD'S

Intense spotlights in the center flanked by widebeam driving lights on each side give you everything in one light



INPUT VOLTAGE: 10-30V DC

COLOR TEMPERATURE: 6000K

HOUSING MATERIAL:
Die-cast aluminum

COLOR: White coating with UV

LENS MATERIAL: PC

ELECTRONICS:
Integrated-epoxy encapsulated

HARDWARE: Stainless 316

OPERATING TEMPERATURE:
-40°C to +60°C

PROTECTION: Reverse polarity

RGB ACCENT LIGHTS



ACCENT LIGHTS KIT

3 LED • 8 PODS • 1.5" x 3"

- LEDs: 3-3W each (9W)
- Raw Lumens: 720
- The HE-8MLRGBK is a complete kit to light up your boat
- (8) HE-MLIRGB RGB accent lights and the HE-CBRGB control box will give you accent lighting where you want it

HE-8MLRGBK

★ IP68 ★
CERTIFIED



ACCENT LIGHTS KIT

3 LED • 4 PODS • 1.5" x 3"

- LEDs: 3-3W each (9W)
- Raw Lumens: 720
- Designed as a starter kit, this allows you get the RGB lights in your boat without breaking the bank but also allows you add up to four more HE-MLIRGB lights

HE-4MLRGBK

★ IP68 ★
CERTIFIED



★ IP68 ★
CERTIFIED



SINGLE ACCENT LIGHT

3 LED • RGB POD • 1.5" x 3"

- LEDs: 3-3W each (9W)
- Raw Lumens: 720

HE-MLIRGB



HEISE RGB APP



APP FOR ANDROID AND IOS:

- This app allows endless color choices and even allows you to store your custom made colors
- Choose from preset flash patterns or set the lights to flash to the music in your library. Lights can also be set to turn on and off at selected times
- Download the Heise RGB app for Android and iOS today!

INPUT VOLTAGE: 10-30V DC

BEAM PATTERN: 120° Flood

HOUSING MATERIAL:
White die-cast aluminum

COLOR: White coating with UV

LENS MATERIAL: PC

MOUNTING:
Cutout template & gasket included

HARDWARE: Stainless 316

OPERATING TEMPERATURE:
-40°C to +60°C

IP RATING: IP68

ACCENT LIGHTS ACCESSORIES

7



ACCENT LIGHTING COVER

- The light cover is for use with the HE-4MLRGBK, HE-8MLRGBK, HE-ML1RGB

HE-ML1DIV



MOUNTING BASE

- The angled base is for use with the HE-ML1, HE-ML1A, HE-ML1B, HE-ML1G, HE-ML1R

HE-ARB1



CONTROL BOX 8 OUTPUT

★ IP68 ★
CERTIFIED

- Control box for RGB lights
- Water resistant control box
- Control box can be mounted in the engine compartment

HE-CBRGB



PIGTAIL ADAPTER RGB ACCENT PODS

- This cable is designed to wire the RGB accent pods into any 4 wire positive anode RGB controller like the Heise HE-RGBC-1, HE-RGBSAC-1, HE-WFRGBC-1, and HE-RFRGBC-1

HE-PTRGB



EXTENSION CABLE 10 FOOT

- The extension cables were designed to add an additional 10 feet of length to the accent pods which are already equipped with a 10 foot cable

HE-EXTRGB



CAMERA BRACKET 3.5 INCH

- Can be attached to the BDR Series, DR Series, or the SR Series light bars
- Bracket accommodates most action cameras with the slide-to-lock mounting base.

- Color: Black + Cover Material: Poly

HE-ACB



"Y" ADAPTER HARNESS KIT

- Each to be used with the HE-WRRK
- Allows two light bars, driving lights, or work lights 240 watts or less

HE-EYHK



3.75"W x 3"H x .75"D

WORK LIGHT 33 LED

- Wattage: 60W
- Raw Lumens: 726
- Lux @ 10M: .1
- Beam Pattern: 120° Flood
- Current Consumption @ 13.8V: .3 A
- Lens Design: Unique waffle

HE-WL1



DUAL ROW W/ MAGNETIC BASE 6 LED

- Wattage: 60W
- Raw Lumens: 726
- Lux @ 10M: 28.5LX
- Beam Pattern: 60° Flood
- Input Voltage: 10-28V DC
- Color Temperature: 6000K

HE-PL1

LED STRIP LIGHTS



RGB STRIP LED LIGHT KIT

5 METER 5050 RGB LEDS

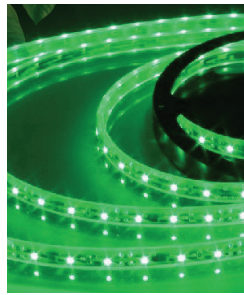
- 5 meters (16.4 feet) RGB 5050 LED strip
- 5050 SMD LEDs at 60 LEDs per meter
- One 24-key IR remote & RGB controller
- 3 Amp power supply
- IP65 water resistant covering

H-RGB5MRK2

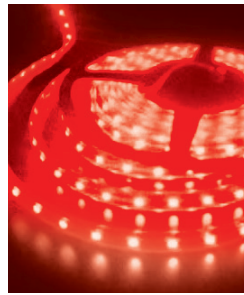
BLUE



GREEN



RED



WHITE



WARM WHITE



IP68 5050 LED STRIP LIGHTS

5 METER ROLL

- IP68 rated waterproof light strip
- 3M double-sided tape provides a strong bond
- LED strips can be cut at every 3rd LED
- 5 meter strip only draws 4.5 amps of current
- Mounts with brackets (included) instead of tape for secure mounting
- Anti-static packaging

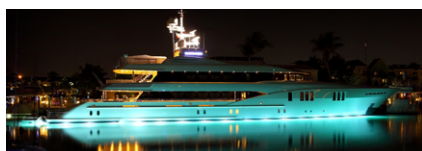


BLUE	HE-B55068
GREEN	HE-G55068
RED	HE-R55068
WHITE	HE-W55068
WARM WHITE	HE-WW55068

ALUMINUM TRACK FOR STRIP LED LIGHTS

3 FT SILVER ANODIZED

- Aluminum surface and flush mount track available in both clear and frosted covers for use with LED strip lights
- Provides decorative look and secure place to attach your LED strip lights
- Flush mount requires a 5/8" wide 1/4" deep opening
- Hardware included



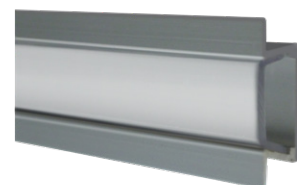
HE-ATCL Clear Surface Mount



HE-ATFL Frosted Surface Mount



HE-AFMTCL Clear Flush Mount



HE-AFMTFL Frosted Flush Mount



RGB LEDS

8" CAN SPEAKERS UNIVERSAL

- White Housing: Molded marine grade, UV treated, high temp ABS. Dual wall designed for strength and rigidity
- Woofer: 8" Polypropylene designed for use in wet locations - 35mm voice coil - 21 oz magnet with 3" passive radiator for extended bass response
- Tweeter: 20mm PEI (Polyetherimide) bridge mounted into grille
- Built to fit 2", 2.25", 2.5" and 2.75" with 4 rubber inserts - rotational mounting base for optimum speaker placement
- 12' of flexible over-jacketed OFC copper wire with waterproof connector. Mating waterproof connector breaks out to (2) 18 AWG speaker wires and a Micro DIN connector with 22 AWG RGB wire
- This product is used with part MPS-RGBC-4 (RGB LED Controller) (sold separately)
- Sold as a pair with a 1 year warranty

MPS-8CSRGB

WATER RESISTANCE: IPX6

IMPEDANCE: 4 ohms

CROSSOVER: 6db passive

FREQ RESPONSE: 60Hz to 20 KHz

SPL: 90 db

POWER HANDLING: RMS-80 watts, peak-160 watts



RGB LEDS

6.5" CAN SPEAKERS UNIVERSAL

- White Housing: Molded marine grade, UV treated, high temp ABS. Dual wall designed for strength and rigidity
- Woofer: 6.5" Polypropylene designed for use in wet locations, 25mm voice coil, 11 oz magnet with 3" passive radiator for extended bass response
- Tweeter: 20mm PEI (Polyetherimide) bridge mounted into grill
- Built to fit 2", 2.25", 2.5" and 2.75" bars on 2.25" and 2.75" universal clamps with 4 rubber inserts - rotational mounting base for optimum speaker placement
- 12' of flexible over-jacketed OFC copper wire with waterproof connector. Mating waterproof connector breaks out to (2) 18 AWG speaker wires and a Micro DIN connector with 22 AWG RGB wire
- This product is used with part MPS-RGBC-4 (RGB LED Controller) (sold separately)
- Sold as a pair with a 1 year warranty

MPS-65WCSRGB

WATER RESISTANCE: IPX6

IMPEDANCE: 4 ohms

CROSSOVER: 6db passive

FREQ RESPONSE: 60Hz to 20 KHz

SPL: 88.5 db

POWER HANDLING: RMS-60 watts, peak-120 watts



MARINE RADIO HOUSING PRE-WIRED SURFACE MOUNT

- White, molded, UV-resistant polycarbonate
- Smoke tinted door - spring-loaded with retention hinge
- Pre-wired for easy installation
- Stainless steel mounting hardware included
- Housing only - radio not included

99-9006



MARINE RADIO COVER TRANSPARENT SMOKE TINTED DOOR

- Black or white finished base
- Magnetic latch - No pushbuttons to break or stick
- Magnetic seal held in place with 3M adhesive
- Retention hinged so the door will stay open
- No other marine cover uses this style of hinge
- Universal design accommodates most DIN head units
- High-temp and UV resistant polycarbonate construction
- Stainless steel mounting hardware included

99-9003W White base

99-9003B Black base

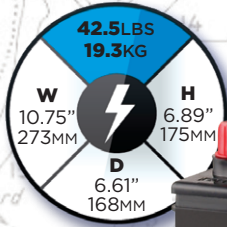


MARINE RADIO COVER TRANSPARENT SMOKE TINTED DOOR

- Black or white finished base
- Positive spring-loaded retention lock
- Longer life, heavy-duty, low-friction hinges
- Dual spring support while cover is open
- Accu-view tinted cover

99-9005 White base

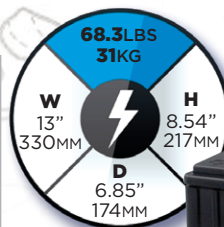
99-9005B Black base



12V MARINE BATTERY
785 CRANK AMPS • 120 MIN RESERVE • 55 AMP HRS.

- AGM technology (Absorbed Glass Mat)
- 12V marine grade battery
- Threaded & standard posts
- Can be discharged and recharged 100's of times

SK-MBT-55



12V MARINE BATTERY
800 CRANK AMPS • 190 MIN RESERVE • 100 AMP HRS.

- AGM technology (Absorbed Glass Mat)
- 12V marine grade battery
- Threaded & standard posts
- Can be discharged and recharged 100's of times

SK-MBT-100

INSTALLATION ACCESSORIES



BLUETOOTH®
AUDIO RECEIVER
WATER RESISTANT DESIGN
RCA OUTPUT

- Remote turn-on comes on when streaming media
- Upgrade existing non-Bluetooth® radio
- Automatically reconnects with the last Bluetooth® device

IBR64



BLUETOOTH®
AUDIO RECEIVER
FLUSH MOUNT
AUX OUTPUT

- Water resistant
- Remote turn-on comes on when streaming media
- Independent volume and track controls

IBR65



12V POWER SOCKET
FLUSH MOUNT
WATER RESISTANT

- .250" power & ground lugs on back
- Use with optional mounts IBR59, IBR60 and IBR61

IBR58

MICRO AMPLIFIERS

Metra PowerSports introduces new micro-amplifiers that are designed to be used in some harsh environments. With an IP rating of IPX6 the amplifiers are designed to get wet and not miss a beat. There are five models available with different power ratings. All of the MPS amps are bridgeable to provide more flexibility. The input side of the amplifiers have an 8" cable with an IP68 connector that is designed to plug directly into the MPS-BTK or MPS-BTK1 (Bluetooth® controller sold separately). The amplifiers come with a pigtail that allows the user to use any radio or Bluetooth® controller with an RCA output. The power cables are 8' long with a waterproof fuse holder so to reach any battery location whether it be in a large boat or a smaller vessel.

W 7.51"/191MM
H 1.54"/39.2MM
D 4.18"/106.4MM



MICRO-AMPLIFIER

4 CHANNEL

60 WATTS RMS X 4 CHANNELS @ 4 OHMS

90 WATTS RMS X 4 CHANNELS @ 2 OHMS

180 WATTS RMS X 2 CHANNELS @ 4 OHMS

- Adjustable 12db high pass/low pass crossovers
- Chipset: Full range Class D using IR (International Rectifier) control chips
- PCB Board: 4 layer, conformal coated
- Water Resistance: IPX6
- Crossover Points: 40 Hz to 500 Hz
- THD: .07%
- S/N Ratio (1 watt @ 4 ohms) : > 90db
- Gain Range: .2 volts - 5 volts
- Freq Range: 20 Hz - 20 KHz
- Fuse Holder: IP68 rated
- Fusing: 40 amp (dual 20 AMP fuses)

MPS-AMP60X4

W 7.91"/201MM
H 1.54"/39.2MM
D 4.18"/106.4MM



MICRO-AMPLIFIER

2 CHANNEL

100 WATTS RMS X 2 CHANNELS @ 4 OHMS

150 WATTS RMS X 2 CHANNELS @ 2 OHMS

300 WATTS RMS X 1 CHANNELS @ 4 OHMS

- Adjustable 12db high pass/low pass crossovers
- Chipset: Full range Class D using IR (International Rectifier) control chips
- PCB Board: 4 layer, conformal coated
- Water Resistance: IPX6
- Crossover Points: 40 Hz to 500 Hz
- THD: .07%
- S/N Ratio (1 watt @ 4 ohms) : > 90db
- Gain Range: .2 volts - 5 volts
- Freq Range: 20 Hz - 20 KHz
- Fuse Holder: IP68 rated
- Fusing: 30 amp (dual 15 AMP fuses)

MPS-AMP100X2

MINI DIN Y
ADAPTER

- 1 Female to 2 Male

MPS-YMDIN

BLUETOOTH® CONTROLLER

WIRELESS • FITS INDUSTRY STANDARD OPENING: 1.45" x .83"

- Complete wireless connection via Bluetooth® 4.0
- One knob does all control features: track/volume/power/source/play/pause/pairing
- Play music or other sources with any Bluetooth® enabled device
- Play music from any media player with 3.5mm auxiliary output
- Built-in line driver for 3x voltage output
- Remembers paired devices and automatically reconnects in connected order when device is present
- Patent pending single wire controller connects directly to a Metra PowerSports Amplifier for complete control (Mini DIN)
- Universal adapter included for use with other amplifiers

MPS-BTK

MUST USE WITH MPS-AMP60X4
& MPS-AMP100X2

L11.3"/287MM
W 5"/127MM
H 1.9"/48.2MM



**MICRO-AMPLIFIER
5 CHANNEL**

80 WATTS X 4 + 220 X 1 @ 4 OHMS
125 WATTS X 4 + 350 X 1 @ 2 OHMS

- Waterproof ATC Fuse Holder: IP68 Rated, 40Ax2
- Water Resistant: IPX6
- Input Sensitivity: 0.2-5V
- Low Pass Filter: 40-500Hz (Front) / 50-250Hz (SUB)
- High Pass Filter: 40-500Hz
- Bass Boost: 0-18dB (SUB)
- Subsonic: 10-55Hz (SUB)
- Crossover Slope: 12dB(F&R) / 18dB(Sub)
- Working Status LED: Red/Blue
- Idle Current: 10mA

MPS-AMP850-5D

L9.75"/247.6MM
W 5"/127MM
H 1.9"/48.2MM



**MICRO-AMPLIFIER
2 CHANNEL**

200 WATTS RMS X 2 CHANNELS @ 4 OHMS
280 WATTS RMS X 2 CHANNELS @ 2 OHMS
560 WATTS RMS X 1 CHANNELS @ 4 OHMS BRIDGE

- Waterproof ATC Fuse Holder: IP68 Rated, 30Ax2
- Water Resistant: IPX6
- Input Sensitivity: 0.2-5V
- Low Pass Filter: 40-500Hz
- High Pass Filter: 40-500Hz
- Bass Boost: N/A
- Subsonic: N/A
- Crossover Slope: 12dB
- Working Status LED: Red/Blue
- Idle Current: 10mA

MPS-AMP200-2D



**MARINE AMPLIFIED
GLASS MOUNT ANTENNA**

- Deluxe high performance windshield or glass mount amplified antenna
- Mount on windshield behind mirror or on fixed side/back windows - 14-9/16"(37cm) width
- Gain FM - 10db/12db, AM -5db/2db
- 95" cable

44-MAUA200



**WHITE MARINE
RUBBER ANTENNA**

- Side/top mount for 1" (25mm) hole split ball
- 14" (36cm) removable white conductive rubber mast
- 54" (137cm) cable

44-MAUSO7R

L 11.3" / 287MM
 W 5" / 127MM
 H 1.9" / 48.2MM



MICRO-AMPLIFIER

4 CHANNEL

125 WATTS RMS X 4 CHANNELS @ 4 OHMS

175 WATTS RMS X 4 CHANNELS @ 2 OHMS

350 WATTS RMS X 2 CHANNELS @ 4 OHMS BRIDGE

- Waterproof ATC Fuse Holder: IP68 Rated, 35Ax2
- Water Resistant: IPX6
- Input Sensitivity: 0.2-5V
- Low Pass Filter: 40-500Hz
- High Pass Filter: 40-500Hz
- Bass Boost: N/A
- Subsonic: N/A
- Crossover Slope: 12dB
- Working Status LED: Red/Blue
- Idle Current: 10mA

MPS-AMP125-4D

EXTENSION CABLE DIGITAL

- 8' extension for 10 pin MPS-AMPS
- All 10 pin MPS audio products
- IP68 connector
- Connects directly to BTK-1
- Connects to RCA pigtail cables
(included with MPS-AMPS)

MPS-AMP-EXT



★ IP68 ★
CERTIFIED

WORKS WITH

- MPS-AMP125-4D
- MPS-AMP200-2D
- MPS-AMP850-5D
- MPS-BTK1

MUST USE WITH MPS-AMP850-5D, MPS-AMP125-4D & MPS-AMP200-2D

BLUETOOTH® CONTROLLER

WIRELESS • FITS INDUSTRY

STANDARD OPENING: 1.45" x .83"



- Complete wireless connection via Bluetooth® 4.0
- One knob does all control features: track volume/power/source/play/pause/pairing
- Play music or other sources with any Bluetooth® enabled device
- Play music from any media player with 3.5mm auxiliary output
- Built-in line driver for 3x voltage output
- Remembers paired devices and automatically reconnects in connected order when device is present
- Patent pending single wire controller connects directly to a Metra PowerSports Amplifier for complete control (10PIN DIN)
- Universal adapter included for use with other amplifiers

MPS-BTK1

"Y" SPLITTER DIGITAL

- "Y" splitter for feeding signal to multiple amps from one source
- Connects directly to MPS-BTK1

MPS-YDIN10





V10 POWER WIRE SPOOLS

- Meets CEA and ANSI specs
- Fully tinned virgin copper construction
- High strand count for max flexibility
- PVC blended jacket
- BC-5W2 marine compliant

1/0 AWG

50 FT	15.24 M	MATTE PEARL	V10PW-1050
50 FT	15.24 M	MATTE BLACK	V10GW-1050
50 FT	15.24 M	MATTE RED	V10PW-1RD50

4 AWG

100 FT	30.48 M	MATTE PEARL	V10PW-4100
100 FT	30.48 M	MATTE BLACK	V10GW-4100
100 FT	30.48 M	MATTE RED	V10PW-4RD100

8 AWG

250 FT	76.20 M	MATTE PEARL	V10PW-8250
250 FT	76.20 M	MATTE BLACK	V10GW-8250
250 FT	76.20 M	MATTE RED	V10PW-8RD250

V10 SPEAKER WIRE SPOOLS

- Meets CEA and ANSI specs
- Fully tinned virgin copper construction
- High strand count for max flexibility
- Ultra-flexible PVC blended jacket
- BC-5W2 marine compliant

12 AWG

125 FT	38.10 M	BLACK	V10SW12125-BK
125 FT	38.10 M	WHITE/BLACK	V10SW12125-WB

16 AWG

250 FT	76.20 M	BLACK	V10SW16250-BK
500 FT	152.4 M	BLACK	V10SW16500-BK
250 FT	76.20 M	WHITE/BLACK	V10SW16250-WB
500 FT	152.4 M	WHITE/BLACK	V10SW16500-WB





AMP INSTALLATION KITS

- Meets CEA and ANSI specification for wire gauge
- Fully tinned virgin copper construction
- High strand count for maximum flexibility
- BC-5W2 marine compliant RCA, speaker, power and ground wire
- Compact brass fusing and distribution

1/0 AWG AMP KIT 5200 watts **V10-RAK1-0**

4 AWG AMP KIT 2100 watts **V10-RAK-4**

8 AWG AMP KIT 800 watts **V10-RAK8**

RCA AUDIO CABLES

6 CHANNEL • 17FT • 5.18M

- Dual twist for improved noise rejection
- Ultra-flexible PVC blended jacket
- Patented high tolerance compact machined metal end
- Quad split tip for maximum contact area
- Fully tinned wire to the entire V10 line.
- Made with BC-5W2 marine grade cable
- Packaged in high-end retail box

V10RCA-176



V10 RCA AUDIO CABLES

- Dual twist for improved noise rejection
- Ultra-flexible PVC blended jacket
- Patented high-tolerance, compact machined metal end
- Quad split tip for maximum contact area
- Made with BC-5W2 marine grade cable
- Packaged in high-end retail box

2-CHANNEL

1.5 FT 0.45 M **V10RCA-1-52**

3 FT 0.91 M **V10RCA-32**

6 FT 1.83 M **V10RCA-62**

10 FT 3.05 M **V10RCA-102**

14 FT 4.27 M **V10RCA-142**

17 FT 5.18 M **V10RCA-172**

20 FT 6.10 M **V10RCA-202**

Y-1 1F-2M **V10RCA-Y1**

Y-2 1M-2F **V10RCA-Y2**



4-CHANNEL

17 FT 5.18 M **V10RCA-174**

VIDEO CABLES

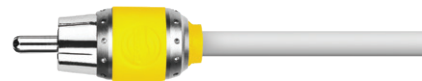
- True 75-ohm video cable
- Ultra-flexible PVC blended jacket
- Patented high-tolerance, compact machined metal end
- Quad split tip for maximum contact area
- Made with BC-5W2 marine grade cable
- Packaged in high-end retail box

SINGLE CHANNEL

2 FT 0.60 M **V10RCA-2V**

9 FT 2.74 M **V10RCA-9V**

20 FT 6.10 M **V10RCA-20V**

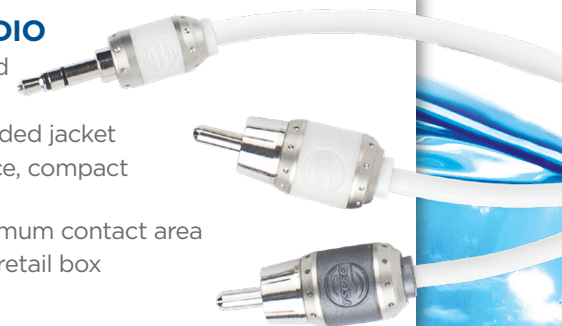


3.5MM TO RCA AUDIO

- Dual twist for improved noise rejection
- Ultra-flexible PVC blended jacket
- Patented high-tolerance, compact machined metal end
- Quad split tip for maximum contact area
- Packaged in high-end retail box

2-CHANNEL

6 FT 1.83 M **V10RCA35-6**



4K HDR
24 GBPS
CL FT4 RATED
4x6GBPS



IMPROVED DESIGN

MHX HDMI® CABLES
HDMI ETHERNET INCLUDED

- Multi-layer shielding
- 24K gold plated contact connectors
- Supports eARC and ARC
- Digital Performance Labs (DPL) tested

MHX-LHDME-5	.5M	High speed + ethernet, 24Gbps
MHX-LHDME1	1M	High speed + ethernet, 24Gbps
MHX-LHDME2	2M	High speed + ethernet, 24Gbps
MHX-LHDME3	3M	High speed + ethernet, 24Gbps
MHX-LHDME4	4M	High speed + ethernet, 24Gbps
MHX-LHDME5	5M	High speed + ethernet, 24Gbps
MHX-LHDME6	6M	High speed + ethernet, 24Gbps
MHX-LHDME7	7M	High speed + ethernet, 24Gbps
MHX-LHDME8	8M	High speed* + ethernet, 10.2Gbps
MHX-LHDME10	10M	High speed* + ethernet, 10.2Gbps
MHX-LHDME12	12M	High speed* + ethernet, 10.2Gbps
MHX-LHDME10	15M	High speed* + ethernet, 6.75Gbps
MHX-LHDM17	17M	High speed* + 6.75Gbps

* 24Gbps achieved with use of the HDM-GA1 or HDM-GA2 (sold separately)

4K HDR
CL FT4 RATED
4x6GBPS



IMPROVED DESIGN

HDMI® CABLES
HDMI ETHERNET INCLUDED

- Multi-layer shielding
- 24K gold plated contact connectors
- Audio Return Channel (ARC)
- Digital Performance Labs (DPL) tested

MHY-LHDME-5	.5M	High speed + ethernet, 18Gbps
MHY-LHDME1	1M	High speed + ethernet, 18Gbps
MHY-LHDME2	2M	High speed + ethernet, 18Gbps
MHY-LHDME3	3M	High speed + ethernet, 18Gbps
MHY-LHDME4	4M	High speed + ethernet, 18Gbps
MHY-LHDME5	5M	High speed + ethernet, 18Gbps
MHY-LHDME6	6M	High speed + ethernet, 18Gbps
MHY-LHDME7	7M	High speed + ethernet, 18Gbps
MHY-LHDMER8	8M	High speed + ethernet, 18Gbps
MHY-LHDMER10	10M	High speed + ethernet, 18Gbps
MHY-LHDMER12	12M	High speed + ethernet, 18Gbps
MHY-LHDMER15	15M	High speed + ethernet, 10.2Gbps



HDMI® ACCELERATOR

- 18 Gigabit Accelerator for passive HDMI® cables
- Works with cables up to 15m
- Powered by a USB cable
- Small, easy to install

HDM-GA1



GIGABIT ACCELERATOR

- 12Gbps bandwidth X 4 channels up to 9m
- Extends 18 Gbps capability up to 20 meters & 48 Gbps capability anticipated up to 9 meters
- Supports all features of the new HDMI 2.0b & 2.1 specification

HDM-GA2



HDMI® EDID REGENERATOR

- HDCP 2.2 support
- HDR, deep color & BT 2020 support
- RF shielded metal case
- 50% typical reduction in data rise times
- Solves: audio dropouts, HDCP not supported, mode not supported and mode out of range

HDM-JRPLUS



HDMI® 70 METER EXTENDER HDBASET 70M OVER SINGLE CAT6

- Supports HDMI 2.0 & HDCP 2.2 (and earlier versions)
- Resolutions Supported: up to 4k/30Hz 4:4:4
- HDR Support
- Compatible with CAT5e/CAT6/CAT6A
- Transmission Distance: 1080P up to 70m; 4K/30 up to 40m over CAT6
- Supports bi-directional IR 20-60Hz with included US standard IR receiver & emitter
- Power from single side
- Wall mountable with integrated mounting tabs

CS-HDBTLPOEU-70

HDMI® POE EXTENDER OVER SINGLE CAT6

- Carries HDMI signals up to 50 meters over single CAT6
- 7 built-in adjustable EDID settings
- HDMI loop out on transmitter
- Includes IR blaster & IR receiver
- Power only required on single side

CS-HDC5EXTSRPOE



RV/BOAT TV MOUNT

- Locks into flush position for safe transport on RV's and boats/yachts
- VESA compliant: 100x100mm - 200x200mm
- Weight Capacity: 40 lbs.
- Sturdy steel construction

FML22



HDMI® SPLITTER
2 DISPLAYS / 1 SOURCE

- Supports HDMI 2.0 and HDCP 2.2 (and earlier versions)
- Supports 1080p, 3D, 4K/60Hz, 4:4:4 up to 18Gbps
- Supports all HDR formats

CS-1X2HMSPL4



HDMI® SPLITTER
4 DISPLAYS / 1 SOURCE

- Supports HDMI 2.0 and HDCP 2.2 (and earlier versions)
- Supports 1080p, 3D, 4K/60Hz, 4:4:4 up to 18Gbps
- Supports all HDR formats

CS-1X4HMSPL4



HDMI® SWITCH
3 SOURCES / 1 OUTPUT

- Supports HDMI 2.0 and HDCP 2.2 (and earlier versions)
- Supports 1080p, 3D, 4K/60Hz up to 18Gbps
- Supports all HDR formats
- Supports Control with IR & RS232

CS-HDM3X1SW4



HDMI® SWITCH
5 SOURCES / 1 OUTPUT

- Supports HDMI 2.0 and HDCP 2.2 (and earlier versions)
- Supports 1080p, 3D, 4K/60Hz up to 18Gbps
- Supports all HDR formats
- Supports Control with IR & RS232

CS-HDM5X1SW4



WARNING: This catalog does not advise whether a State of California Proposition 65 warning is required for a particular item of merchandise. To learn whether a particular item of merchandise requires a California Proposition 65 warning, please be sure to look up and read the particular merchandise's listing on Metra's website www.MetraOnline.com, as well as read the particular merchandise's packaging. When a California Proposition 65 warning is present on Metra's website listing for the particular merchandise, or on the particular merchandise's packaging, a compliant California Proposition 65 warning is to be provided to the purchasing California consumer prior to the sale of the particular merchandise.



US OPERATIONS

Corporate Sales / Manufacturing
460 Walker Street
Holly Hill, FL 32117-2699

Local: 386.257.1186
National: 800.221.0932
National Fax: 800.647.8091

WAREHOUSE OPERATIONS

Daytona Beach, FL
Dallas, TX
Freehold, NJ
Lexington, KY
Fresno, CA
Long Beach, CA

OEM OPERATIONS

METRA DETROIT • St. Claire Shores, MI

OVERSEAS OPERATIONS

Taipei, Taiwan R.O.C. • Hong Kong

#MetraMarine



facebook.com/MetraElectronics



instagram.com/MetraElectronics



twitter.com/MetraElectronic



youtube.com/MetraElectronics



Order Anytime Day or Night at MetraDealer.com



Download all our New Catalogs at MetraOnline.com



THE INSTALLER'S CHOICE

MetraMarine.com
MetraOnline.com
MetraDealer.com

ORDERS: 800.221.0932

CORPORATE HEADQUARTERS:

Metra Electronics Corporation
460 Walker Street
Holly Hill, FL 32117-2699

© Copyright 2019 - Metra Electronics Corporation



MARINEBRO-19