



Star 6,582

FEATURES EVENT TRIGGERS ENTERPRISE SUPPORT PLANS DOCS BLOG

GET STARTED

Instant Realtime GraphQL on Postgres

Open-source · Add to existing postgres · Fine-grained access control · Blazing fast



Try it on the Heroku Free Tier



Try it on DigitalOcean



Get started with Docker

RECOMMENDED

Stay in touch for important updates

Awesome product updates; no spam

Your Email

NOTIFY ME

Join the community

Get help and feedback quickly





Discuss/ask on Discord

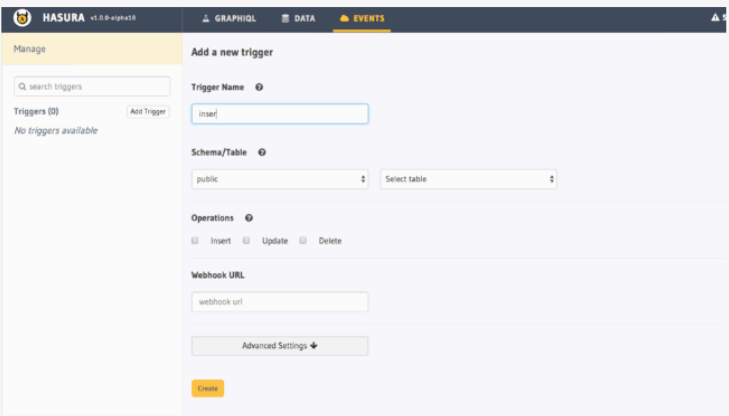
Follow for updates

Watch on Github



Powerful GraphQL out-of-the-box

-  **GraphQL queries & mutations**
Powerful queries & mutations for single & multiple objects
-  **Realtime with subscriptions & live-queries**
Convert any GraphQL into a subscription
-  **Event-triggers on database events**
Trigger serverless functions or web hooks on database changes
-  **Dynamic access control & auth**
Dynamic access control permissions that integrates with existing auth



Add business logic easily

-  Remote Schemas
-  Trigger webhooks on database events



Powerful GraphQL out-of-the-box



GraphQL queries & mutations

Powerful queries & mutations for single & multiple objects



Event-triggers on database events

Trigger serverless functions or web hooks on database changes



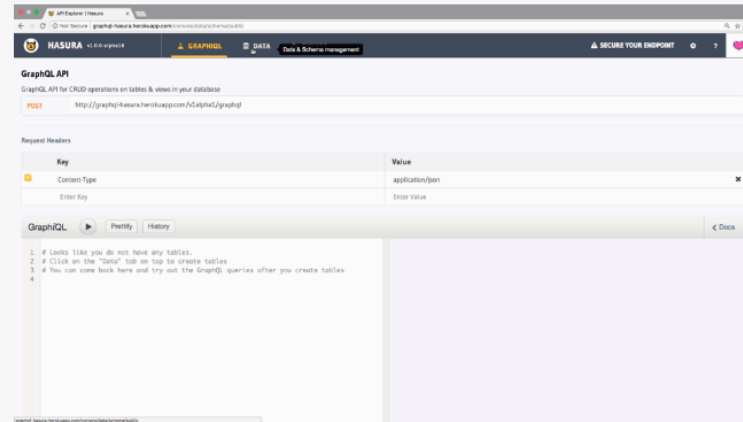
Realtime with subscriptions & live-queries

Convert any GraphQL into a subscription



Dynamic access control & auth

Dynamic access control permissions that integrates with existing auth



Add business logic easily

Remote Schemas

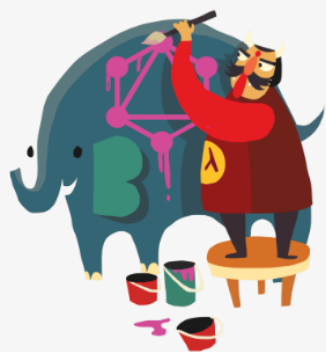
Add remote GraphQL schemas to Hasura GraphQL Engine. Ideal for writing business logic, making direct calls to another data-source and delegating to HTTP APIs.

[FIND OUT MORE](#)

Trigger webhooks on database events

Add asynchronous business logic that is triggered based on database events. Ideal for notifications, data-pipelines from Postgres or asynchronous processing.

[FIND OUT MORE](#)



Useful features to help you build & ship applications



Admin UI & Rails inspired Schema Migrations



Add to a live or existing Postgres Application



Full power of Postgres - works with Timescale, PostGIS, etc

[SEE ALL FEATURES](#)