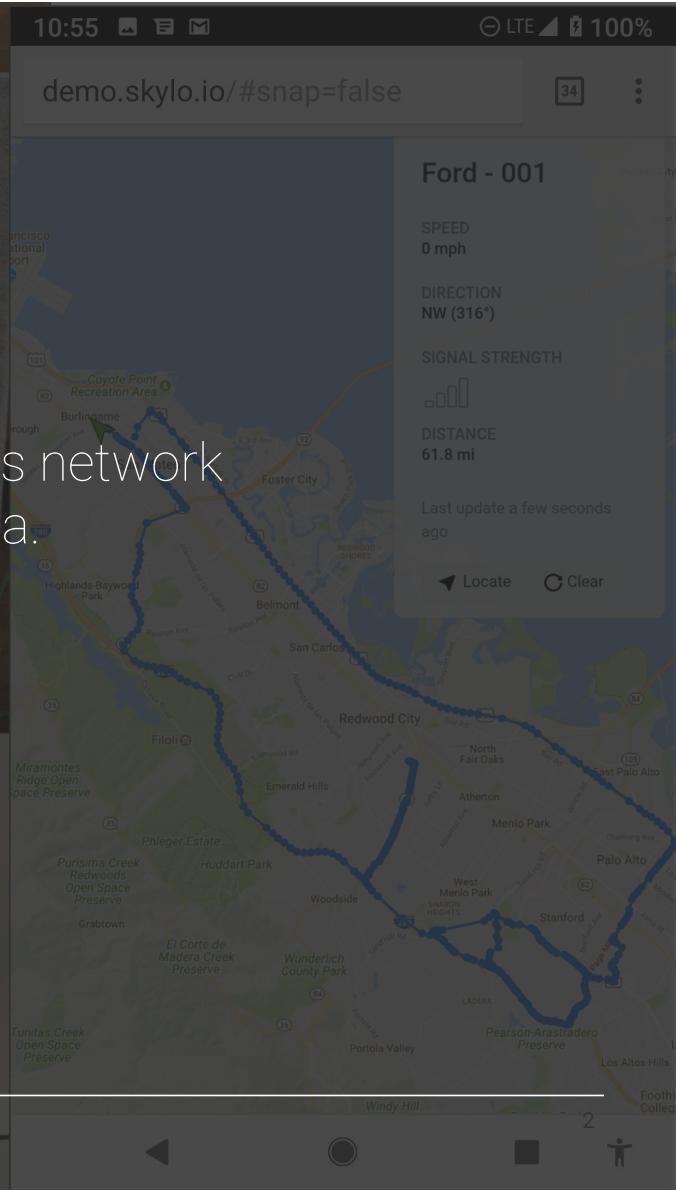




Skylo Overview

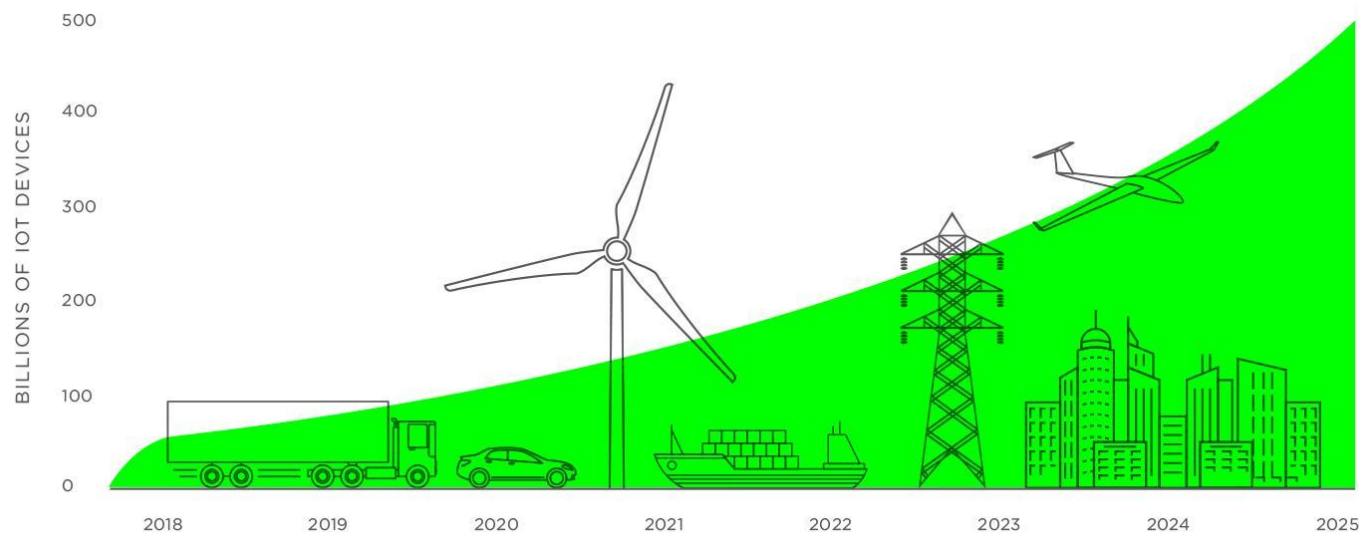
Company Vision

The most affordable and accessible wireless network to mobilize the world's machine data.



IoT connectivity needs outpacing existing networks

- Businesses integrating sensor, intelligence and automation technology into products and services
- Current networks do not address requirements for ubiquitous, reliable, cost-effective machine data
- Skylo Technologies emerged from Stanford research team to address this challenge



Data Source: Cisco

Enabled by proprietary Skylo hub technology

Connectivity breakthrough

- No cost-effective solution exists for high volume IoT connectivity.
- Leveraging mass-market standards, Skylo brings a breakthrough in low-cost satellite IoT hubs.
- This technology supports an exponentially growing IoT ecosystem of plug-and-play hubs that self-install, similar to portable hotspots.



Skylo Hub

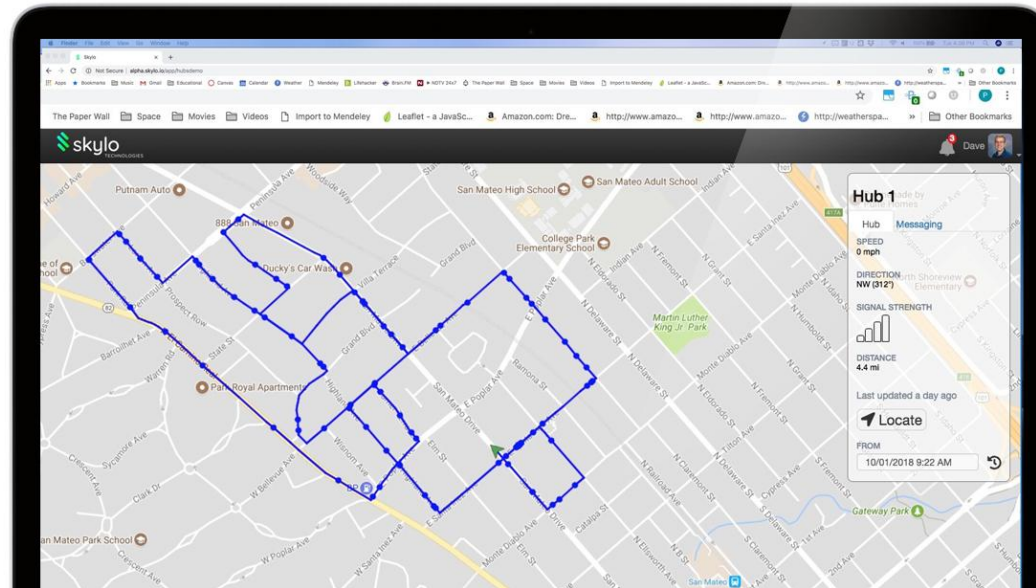
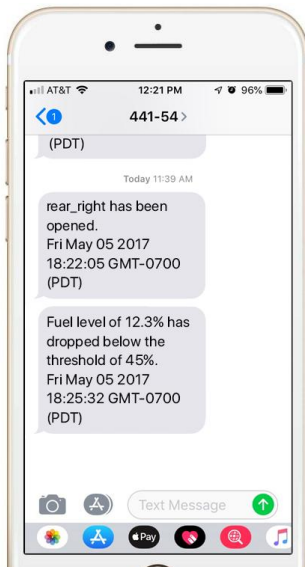


Existing Terminals

Price	< \$100	\$2500
Weight	< 0.5 kg	>10 kg
Dimensions	0.7 x 0.7 x 0.1 ft	4 x 4 x 4 ft
Mobile	Yes	No
Installation cost	\$0 (self install)	\$500
Installation time	Minutes	Hours
Power consumption	< 20 W (Solar/USB)	300 W (VAC)

Platform/API for device & data management

- Cloud-based multi-tenant data warehousing
- Developer friendly APIs
- Outcome and goal-oriented: 2-way messaging, support for automated actions



Sample of target markets, growing rapidly



Container Tracking

- Visibility in ports, freight stations, and en-route to final destination
- Insight for logistics planning
- Real time cold chain tracking



Vehicle Tracking & Telematics

- Delivery route optimization
- Real time maintenance alerts
- Monitor driver behavior
- Loss prevention, insurance



Smart Agriculture

- Shared economy business model
- Automated farming
- Improved crop yields
- Reduced water/diesel expenses



Financial Transactions

- Rural villages connected to financial networks (mPoS & mATM)
- Government maximizes tax revenue



Vessel Tracking

- Fleet tracking and utilization
- Optimized fishing locations
- 2-way alerts (SoS, preventative maintenance, weather, etc.)

Sample of segments & current market size in emerging markets

South / Southeast Asia (excl. China)	Automotive Freight & containers Agriculture Fintech Vessels
	<hr/>
	SSEA Total
LATAM	Automotive Containers Agriculture Fintech Vessels
	<hr/>
	LATAM Total
Africa	Automotive Freight & containers Agriculture Fintech Vessels
	<hr/>
	Africa Total
	<hr/>
	2,096M



Contact:

David Borison
dave@skylo.tech
+1.650.799.3683

