

# There's a lot more to our new roll-up doors than ever before.

**Optional large drip rail**

**Over-molded idler wheels** for smoother and quieter operation.

**New side shutter seal** provides a superior water tight seal.

**Improved co-extruded inner seal** between slats provides an improved seal and a stronger shutter door.

**3 new tracks** that feature wider faces to accommodate radius edged compartment openings.

**Stronger Lift Bar** features unique D shape - will not bow or bend.

**Door Ajar switch** with improved reed switch for reliability and ease of wiring.

## Introducing **Series IV** Shutter Doors from R-O-M

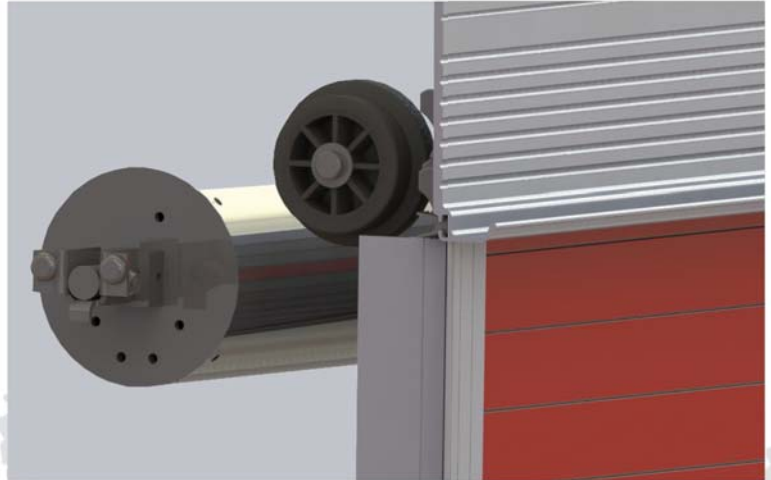
Firefighting Solutions from the World Leader.

# Series IV Shutter Doors

Performance / Durability / Modern Style



**Door Ajar switch** with improved reed switch for reliability and ease of wiring.



**Over-molded idler wheels** for smoother and quieter door up and down operation.



**New side shutter seals** for a superior water-tight seal and reduced wear on shutter surfaces.

**Improved co-extruded inner seal** between slats provides a better seal and stronger door.



**Unique D-shape lift bar** that is easier to grab and two times stronger.

**Grooved finger pull plate** for better traction when pulling down doors.

*For a demonstration call today.*

800.827.3692  
romcorp.com

**R.O.M.**<sup>TM</sup>

A Safe Fleet Brand