



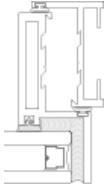
- ▶ Framing
  - ▶ Sun Control
  - ▶ Entrances / Hardware
  - ▼ Windows
    - ▼ Fixed - Projecting
      - ▶ CV200 Series (Non-Thermal)
      - ▶ N200T Series (Thermal)
      - ▶ T200 Series (Thermal)
      - ▶ N200 Series (Non-Thermal)
      - ▶ T237 Series (Thermal)
    - ▶ Hung
    - ▶ Sliding
    - ▶ Acoustic
    - ▶ Ballistic
    - ▶ Blast
    - ▶ Impact
    - ▶ Security
    - ▶ Cold Rolled Steel
    - ▶ Hot Rolled Steel
    - ▶ Window Hardware / Accessories
    - ▶ Steel Window
    - ▶ Wilson Partitions
    - ▶ Arcadia Custom (Residential)
- Finishes**

Windows | Fixed - Projecting | CV200 Series

## Fixed - Projecting CV200 Series (Non-Thermal)

### Zero Sightline 3 1/4" frame for 1" Glass

Reference All CAD Details



- Overview
- BIM Models
- CSI Guide Specifications
- Installation Instructions
- Parts Identification



### Design Features

- ※ Zero sightlines (No exterior framing sightline buildup)
- ※ Leed credit opportunities
- ※ Colormodic Arcadia (9) anodized color system
- ※ Comprehensive spectrum of paint finishes
- ※ Optional mechanical consealed fitting for integration in the building management system

### Design Applications

- ※ Insert within storefront, window wall, curtain wall
- ※ Four-sided structurally glazed with silicone
- ※ Accommodates 1/4" & 1" glazing
- ※ Positive cast white bronze locking hardware
- ※ Stainless steel, four-bar hinges
- ※ Optional Roto-operator (as shown)