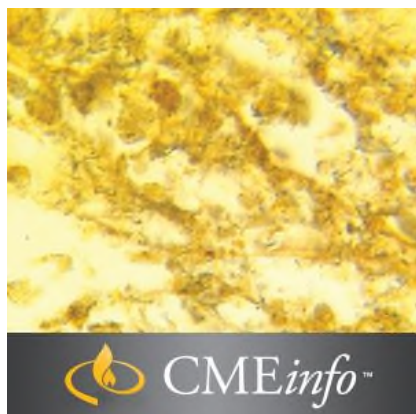





home / products / cmeinfo / clinical updates / **clinical microbiology**



## Clinical Microbiology

### Oakstone Clinical Update

This comprehensive CME review course covers the general diagnostic aspects involved in testing for microbial pathogens and recognizing the clinical aspects of infection with microbial agents. Ideal for MOC.

#### Video

Online - \$795.00  Online + USB\* - \$895.00

**\$795.00**

Qty:

SKU: 173 \*USB in US and Canada only

#### Stay Current in Clinical Microbiology

This comprehensive CME course provides a review of the major pathogens associated with human infections. It also includes the bonus lecture "New Technologies in Microbiology." Pathology residents, microbiology fellows, and practicing pathologists will benefit from up-to-date knowledge presented in an organ systems format and dedicated to the most clinically important bacterial, viral, fungal, and parasitic agents. *Clinical Microbiology* will help you:

- Describe specimens submitted for the isolation of microbial pathogens
- Become familiar with various human infection organisms
- Discuss laboratory methods used for microbial identification
- Describe diagnostic approaches used in clinical microbiology

#### Discover New Guidelines

A clinically based update, this learn-at-your-own-pace course in the clinical practice of microbiology provides a maximum of **14.75 AMA PRA Category 1 Credits™**. Available online, it provides access to unbiased, evidence-based content and case-based reviews so you may expand your knowledge and incorporate the latest guidelines into your daily practice. **This activity meets the American Board of Pathology's Maintenance of Certification (MOC) requirements for Part II (CME and SAMs) Lifelong Learning and self assessment.**

View our full list of [Topics/Speakers](#), [Faculty](#), [Accreditation](#) and [Media Format](#) information.

#### QUICK FACTS

**Provider: Oakstone**

#### Course Director:

**William M. Janda, PhD, D(ABMM)** *Professor Emeritus of Pathology  
College of Medicine  
University of Illinois at Chicago  
Division Chair, Microbiology and Virology  
Department of Pathology  
John H. Stroger, Jr. Hospital  
Cook County Health and  
Hospitals System  
Chicago, IL*

**Credits:** Earn a maximum of 14.75 AMA PRA Category 1 Credits™

Specimen Collection and Processing in Clinical Microbiology - *William M. Janda, PhD, D(ABMM)*

Upper Respiratory Tract Infections - *William M. Janda, PhD, D(ABMM)*

Lower Respiratory Tract Infections - *William M. Janda, PhD, D(ABMM)*

Urinary Tract Infections - *William M. Janda, PhD, D(ABMM)*

Skin/Soft Tissue/Wound/Bone and Joint Infections - *Amanda Harrington, PhD, D(ABMM)*

Eye Infections - *Amanda Harrington, PhD, D(ABMM)*

Gastrointestinal Infections - *William M. Janda, PhD, D(ABMM)*

Central Nervous System Infections - *William M. Janda, PhD, D(ABMM)*

Bloodstream/Cardiovascular Infections - *Amanda Harrington, PhD, D(ABMM)*

Sexually Transmitted Infections - *William M. Janda, PhD, D(ABMM)*

Anaerobic Infections - *William M. Janda, PhD, D(ABMM)*

Antimicrobial Susceptibility Testing - *Amanda Harrington, PhD, D(ABMM)*

Case Studies - *Amanda Harrington, PhD, D(ABMM)*

Laboratory Diagnosis of Hepatitis A, B and C - *William M. Janda, PhD, D(ABMM)*

#### BONUS LECTURE (non-credit)

New Technologies in Microbiology - *Amanda Harrington, PhD, D(ABMM)*

#### Course Director

**William M. Janda, PhD, D(ABMM)**

*Professor Emeritus of Pathology, College of Medicine  
University of Illinois at Chicago  
Division Chair, Microbiology and Virology  
Department of Pathology  
John H. Stroger, Jr. Hospital/Cook County Health and Hospitals System  
Chicago, IL*

#### Speaker

**Amanda Harrington, PhD, D(ABMM)**

*Assistant Professor of Clinical Pathology  
Director, Clinical Microbiology  
University of Illinois Hospital and Health Science System  
Chicago, IL*

#### Accreditation Statement

Oakstone Publishing, LLC is accredited by the Accreditation Council for Continuing Medical Education (ACCME) to provide continuing medical education for physicians.

#### Designation

Oakstone Publishing, LLC designates this enduring material for a maximum of 14.75 *AMA PRA Category 1 Credits™*. Physicians should claim only the credit commensurate with the extent of their participation in the activity.

**Date of Original Release:** October 30, 2016

**Date Credits Expire:** October 30, 2019

CME credit is awarded upon successful completion of a course evaluation and post-test.

**This activity meets the American Board of Pathology's Maintenance of Certification (MOC) requirements for Part II (CME and SAMs) Lifelong Learning and self assessment.**

#### Learning Objectives

At the conclusion of this CME activity, the participant will be able to:

- Describe the types of specimens submitted for the isolation of microbial pathogens
- Identify the organisms associated with various human infections
- Discuss the methods used in the laboratory for microbial identification and antimicrobial susceptibility testing
- Describe the diagnostic approaches used in clinical microbiology to optimize patient care

#### Intended Audience

This program is ideal for pathology residents, microbiology fellows, and practicing pathologists.



## Related Products

CMEinfo Insider for Physicians



Practical Reviews in Pathology

Practical  
Reviews  
PATHOLOGY

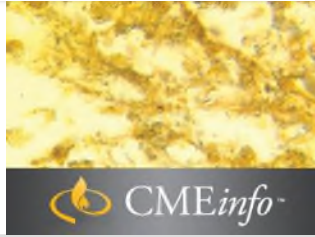
Topics in Risk Management 5th Edition



## Recently Viewed Products

---

Clinical Microbiology



[Privacy Policy](#) | [Terms of Service](#) | [FAQ](#) | [Site Map](#) | [Contact Us](#) | [Accreditation](#)

Copyright © 2018 Oakstone. All rights reserved.

Powered by [nopCommerce](#)