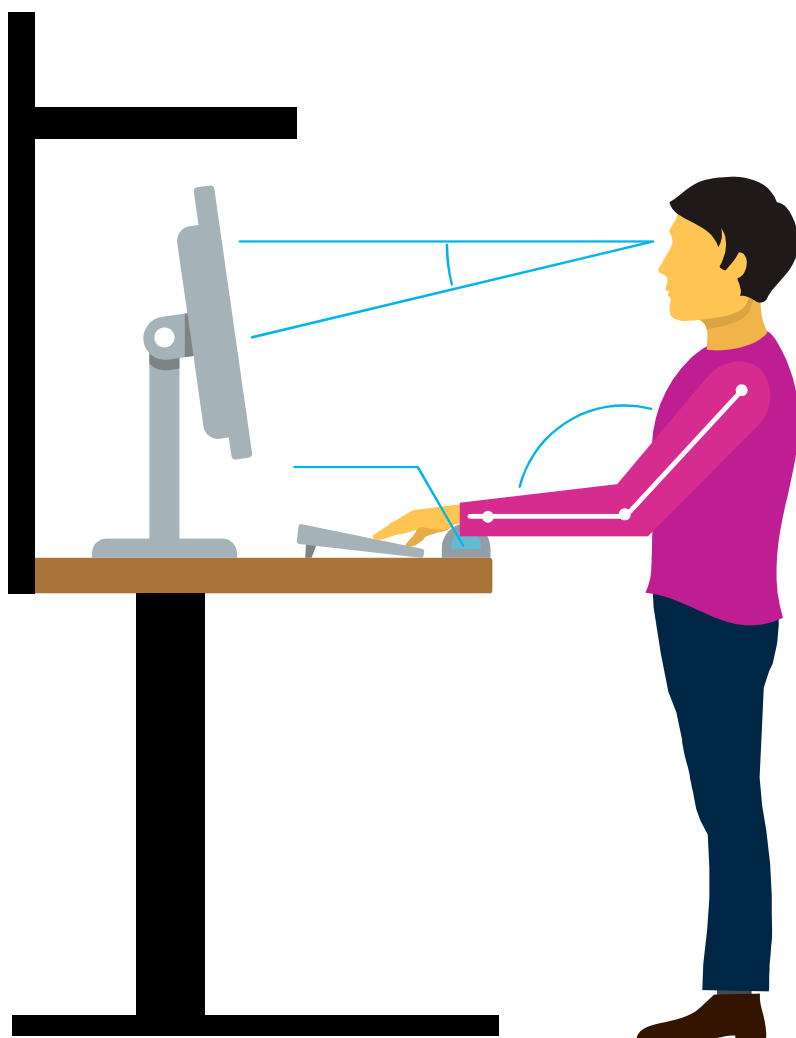


ERGOSTAT PRO
CATALOG





About the ErgoStat Pro

If you've ever seen our flagship ErgoStat, you'll recognize the height adjustable mechanism we pioneered in 1990.

So, when a customer asked us to build a product with a greater range of adjustability we applied the same design principles to the ErgoStat Pro.

The ErgoStat Pro has everything we like about our original ErgoStat – ergonomic positioning, overhead storage and built-in anti-collision technology – all working together to support people who perform lighter duty tasks. The optional battery power kit provides untethered freedom to work anywhere.

KEEP YOUR CATALOG CURRENT

This table, along with revision letters on page footers, indicate revised product descriptions, new products or eliminations.

Change Date	Page Number	Description of Catalog Revision
06.29.17	6.5	replaced product with a new flatscreen keyboard platform
07.18.17	7.7 - 7.8	added new Privacy Panels / White Board Panel and Tackboard Insert
07.20.17	2.5	added touch up paint
11.14.17	6.4, 6.6	added Flat Screen Arm with Post and Notebook Holder
04.04.18	6.8, 6.9	added Cable Tray and Modesty Panel
07.03.18	1.3, 3.2-3.3	added laminate color Ash Grey; discontinued Matrix

Table of Contents

SECTION 1. HOW TO ORDER	
STANDARD PAINT FINISH	1.2
FABRICS	1.2
LAMINATE FINISHES	1.3
EDGEBAND OPTIONS	1.3
WARRANTY AND CONTRACT TERMS	1.4
SECTION 2. BASE AND RISER FRAME	
ELECTRIC BASE	2.2
RISER FRAME	2.4
TOUCH UP PAINT	2.5
SECTION 3. WORKSURFACES	
STANDARD WORKSURFACE	3.2
CORNER WORKSURFACE	3.3
HARDWOOD WORKSURFACE	3.4
AUXILIARY WORKSURFACE	3.5
SECTION 4. SHELVING	
MULTI-FUNCTION SHELF	4.2
BOOKEND SHELF	4.3
DISPLAY SHELF	4.4
SHELF ADD-ON LIP	4.5
LOWER SHELF	4.6
SECTION 5. ELECTRICAL	
ELECTRIC PLUG STRIP	5.2
LED LIGHTS	5.3
SECTION 6. COMPUTER ACCESSORIES	
CPU HOLDER	6.2
FLAT SCREEN ARMS	6.3
FLAT SCREEN ARM WITH POST	6.4
SLATWALL / BIN RAIL	6.5
FLATSCREEN ARM FOR SLATWALL / BIN RAIL	6.5
FLAT SCREEN KEYBOARD PLATFORM	6.6
NOTEBOOK HOLDER	6.6
KEYBOARD WITH MOUSE TRAY, SURFACE MOUNT	6.7
CABLE TRAY	6.8
MODESTY PANEL	6.9
SECTION 7. STORAGE / ACCESSORIES	
PEDESTAL DRAWERS, HANGING	7.2
PENCIL DRAWER	7.3
TOTES AND TOTE BEARERS	7.4
TOTE HOLDERS, SURFACE MOUNT	7.5
STORAGE BINS	7.6
PRIVACY PANEL / WHITE BOARD PANEL	7.7
TACKABLE INSERT	7.8

ABOUT THIS CATALOG

The ErgoStat Pro catalog contains typical product illustrations, context drawings and nominal dimensions. It is based on the latest information at publication date.

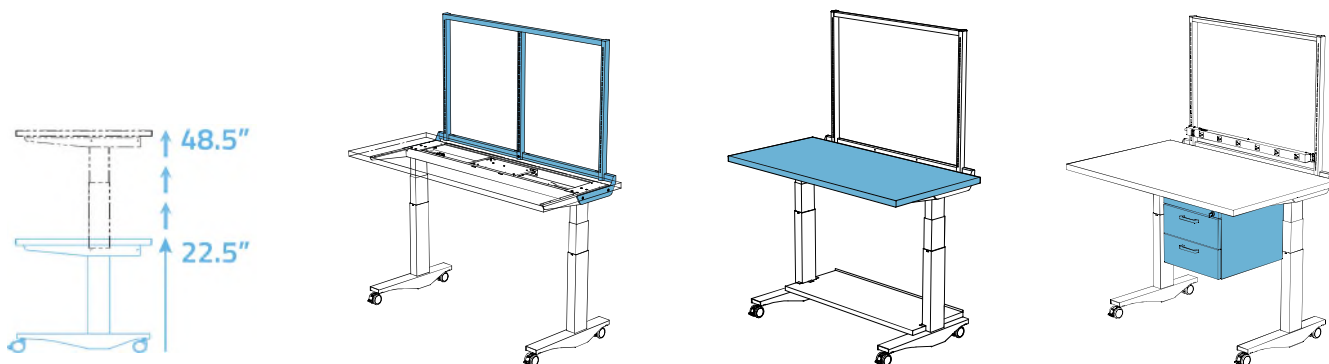
Symbiote reserves the right to make changes at any time, without notice, to finishes, materials and specifications and to discontinue finishes and products.

QUOTES AND PRICING

Symbiote quotes include product specifications with drawings and component parts. U.S. pricing is available from your sales representative or Symbiote.

TERMINOLOGY AND PRODUCT FEATURES

The ErgoStat Pro is a height adjustable workstation with anti-collision technology. It is ideal for laboratory and technical office workers who perform lighter duty tasks. Modeled after Symbiote's original ErgoStat, it has the same ergonomic features and overhead storage—plus a new battery power kit.



Adjustable Base

- 26-inch travel range.
- Electric base with glides or casters.
- Lifts 250 pounds, evenly distributed, with glides or casters.
- Built-in anti-collision technology.

Riser Frame + Spine

- Mount a Riser Frame - gain 29 inches of storage above surface.
- Accessories move up/down with you as frame is raised/lowered.
- Frame supports 200 pounds.
- Riser Spines divide frame into smaller sections.

Surfaces

- Add a 24-30-36 inch deep surface to construct a height adjustable bench.
- Surface widths: 36-48-60-72 inches.
- Laminate and mixed hardwood.
- Matching or contrasting edges.

Accessories

- Organize the ErgoStat Pro with a battery kit, shelves, lighting, monitor arms, plug strips, pegboards, etc.
- Add a footrest, drawer, hanging ped or lower shelf below the surface.

SECTION 1. HOW TO ORDER

STANDARD PAINT FINISH	1.2
FABRICS	1.2
LAMINATE FINISHES	1.3
EDGEBAND OPTIONS	1.3
WARRANTY AND CONTRACT TERMS	1.4

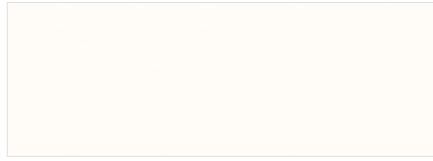


STANDARD PAINT FINISH

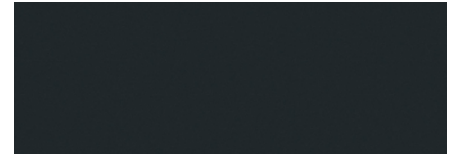
High-efficiency powder paint system produces a consistent coverage and finish. This supports Symbiote's sustainable practices, producing no VOCs and hazardous emissions. Finishes are checked to guarantee quality and color validity.



Argent Silver **AS**



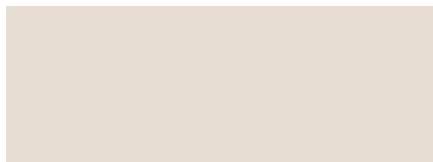
Arctic White **AW**



Black **BK**



Grey Light **GL**



Neutral White **NW**

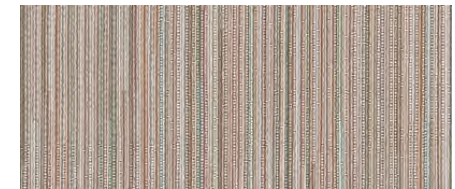
FABRICS



Angora **A2035**



Asteroid **A2053**



Cement **M031**



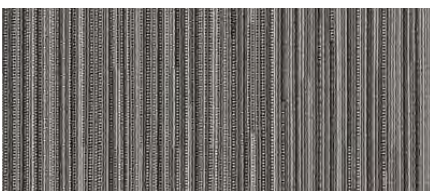
Eucalyptus **A2047**



Geranium **A2084**



Graphite **A2079**



Subway **M024**



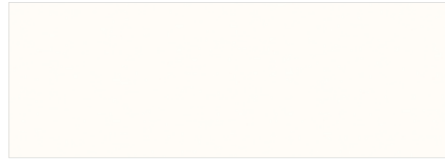
Waterfall **A2691**

Online or printed samples vary depending on your monitor and printer. To request an actual sample please contact your sales representative.

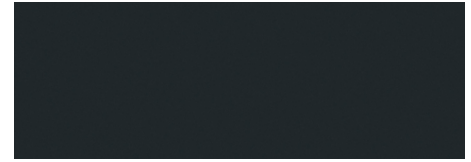
LAMINATE FINISHES



Ash Grey **AH**



Arctic White **AW**



Black **BK**



Chai Grain **CG**



Driftwood **DF**



Espresso Grain **EG**



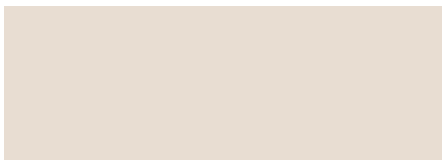
Grey Light **GL**



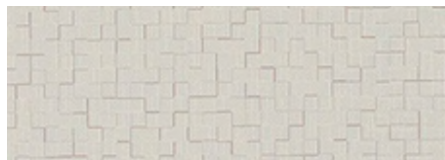
Neutral Oak Ply **LP**



Mocha Grain **MG**



Neutral White **NW**



Puzzle **PZ**

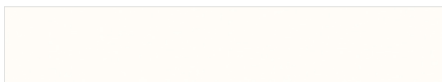


Silver Oak Ply **SP**



Weathered Wood **WW**

EDGEBAND OPTIONS



Arctic White **AW**



Argent Silver **AS**



Black **BK**



Brown **BR**



Grey Light **GL**



Neutral White **NW**



Shadow **SH**

Online or printed samples vary depending on your monitor and printer. To request an actual sample please contact your sales representative.

WARRANTY AND CONTRACT TERMS

WARRANTY

Symbiote®, Inc. hereinafter referred to as Symbiote, warrants its standard products to be free of defects on material and workmanship from the date of initial delivery for the applicable warranty period specified below, when the products are installed and used in accordance with Symbiote's published instructions. This warranty is made by Symbiote to purchasers acquiring the product directly from Symbiote or its authorized dealers and distributors. No person, firm or corporation is authorized to assume for Symbiote any liability in connection with the sale or installation of Symbiote's products except as stated above.

Because of natural variations over which Symbiote has no control, Symbiote does not warrant matching of color, grain or texture. Symbiote makes no warranty with respect to non-standard materials selected by and used at the request of a customer.

Standard Furniture Products

A one-year warranty period for labor and materials applies to all standard and non-standard products. An extended warranty, for replacement of material only, applies to the following products.

- 12 years for standard product and system accessories excluding products and components listed below. The following items are limited to the original equipment manufacturer's warranty:
- 1 year for ESD laminate and magnification lights.
- 2 years for task lighting (excluding lamps).
- 5 years for electric, height adjustable tables.

Non-Standard Products

1 year for non-catalog custom products and alternatives.

Symbiote's obligations and the purchaser's remedy pursuant to the foregoing warranty are limited to repair or replacement at Symbiote's option, F.O.B. Symbiote's plant, products which prove to be defective within the first year of the warranty period and to furnish necessary repair parts for the products which prove to be defective within the remainder of the extended warranty period. Symbiote will determine whether defective products should be returned. Repaired or replaced product will be returned to the purchaser at the Symbiote's expense. Purchasers may be required to establish that the products were installed according to Symbiote's specifications

and is within the warranty period by producing invoices or other such evidence as may be reasonably satisfactory by Symbiote.

THERE ARE NO OTHER WARRANTIES EXCEPT AS EXPRESSLY SET FORTH ABOVE, EITHER EXPRESS OR IMPLIED, INCLUDING ANY WARRANTY OF MERCHANTABILITY OR FITNESS FOR ANY PARTICULAR PURPOSE.

Symbiote is not liable for loss of time, inconvenience, commercial loss, incidental or consequential damages.

The remedies stated herein are expressly agreed to be exclusive as a condition of sale, and Symbiote's liability with respect to its products or installation services shall not exceed that expressly set forth above irrespective of the theory upon which any claim might be based, including breach of contract, warranty, negligence or strict liability of tort.

Symbiote does not warrant product exposed to extreme environmental conditions or product that has been subject to improper use or storage. In addition, Symbiote does not warrant failure resulting from normal wear and tear.

CONTRACT TERMS

All quotations, proposals, or similar communications from Symbiote®, Inc. ("Symbiote") are considered "invitations to contract". Any order placed by a customer must be in the form of a written purchase order and shall be considered an "offer". Any acknowledgment of an order by Symbiote must be in writing and shall be considered an "acceptance" which, when mailed or faxed to the customer, shall then result in a binding sales contract of which these Standard Terms and Conditions shall be a part. Acceptances may be made only at Symbiote's home office in Zeeland, Michigan, and all sales contracts shall be made pursuant to and controlled by the laws of the State of Michigan. Notwithstanding any inconsistent or contrary term which may appear on a customer's purchase order, Symbiote's goods are sold only upon these Standard Terms and Conditions.

PRICES

Published pricing is U. S. dollars unless otherwise stated on the face side, all prices are F.O.B. Symbiote's factory, Zeeland, Michigan, and do not include freight, storage, handling, uncrating or installation charges. Upon request Symbiote will provide estimated freight charges F.O.B. destination. Prices do not include sales, use, excise or any other taxes or assessments which may be applicable to the sale.

WARRANTY AND CONTRACT TERMS, continued

Prices do not include design services or field adjustment of the product except that provided under the warranty. Field Design/ Engineering services can be supplied at a per diem rate plus travel and living expenses unless specified under contract.

Symbiote reserves the right to make changes in pricing without notice.

ORDERING INFORMATION

All orders must be in writing to avoid error and/or duplication. Order all products by their complete product number. Specify quantity, product number, product description, finish option and any other specifying information requested. Submit orders via electronic mail, conventional mail or fax on your purchase order form. Acknowledgments are issued within five working days of acceptance of the order with an approximate ship date of the product ordered.

TAXES

In addition to the purchase price, the customer is liable for all sales, use and excise taxes and/or other governmental charges imposed in respect of the sale, delivery or installation of the goods being purchased by the customer hereunder (except taxes on or measured by net income of Symbiote), including those which Symbiote may be required to pay, except where the law otherwise provides. Unless otherwise specified on the face side hereof, the customer shall pay all such taxes directly to the appropriate taxing authorities.

PAYMENT

The payment terms contained in this paragraph apply only to customers whose credit has been approved by Symbiote. For purchases of standard goods in the ErgoStat Pro Catalog, Symbiote offers a one percent (1%) discount off of the purchase price for full payments made within ten (10) days after the invoice date. All payments are due within thirty (30) days after the invoice date. For purchases of custom goods, payment terms are fifty percent (50%) of the total purchase price deposited with the order and the total remaining purchase price payable within thirty (30) days after the invoice date. Beginning thirty (30) days after the invoice date, the customer shall pay a late payment charge of one and one-half percent (1½%) per month on any unpaid portion of the purchase price. Visa, MasterCard, American Express and Discover credit cards are accepted. Symbiote reserves the right to revoke or modify these credit terms at any time.

RETENTION OF TITLE; SECURITY INTEREST

Symbiote shall retain title to the goods, any replacements thereof, and any additions thereto, for purpose of security, and

title shall not pass to the customer until the purchase price and all sums due hereunder are fully paid. The customer shall execute a financing statement (if requested by Symbiote) and other documents necessary to enable Symbiote to place third parties on notice of its title to the goods.

SHIPMENT

Orders shipped F.O.B. Zeeland, MI have freight bills directly sent from the carrier to the purchaser for direct payment by the purchaser. Orders shipped F.O.B destination have freight included in the invoice. Special shipping costs, if specified by the purchaser, are the responsibility of the purchaser. Any shipping date shown on the face hereof represents Symbiote's best estimate as of the date hereof. However, Symbiote shall not incur any liability of any kind for failure to ship on any particular date unless a firm shipping date has been expressly agreed to by an officer of Symbiote in a separately signed written instrument. Responsibility for the product and risk of loss shall pass to the customer when the goods are placed in the possession of a common carrier. Claims against the carrier shall be the responsibility of the customer. Claims against Symbiote for apparent defects, errors or shortages must be made in writing to Symbiote within thirty (30) days of receipt of the goods or such claims shall be considered waived and the goods accepted as delivered. If the customer claims the goods delivered are non-conforming, the customer shall afford Symbiote prompt and reasonable opportunity to inspect the goods. Symbiote's liability for non-conforming goods shall be limited to repair or replacement of such goods or allowance of credit for such goods, at Symbiote's option. If Symbiote and the customer are unable to reach settlement of any claim relating to goods, the customer must institute legal action against Symbiote within one (1) year after such claim arises and thereafter all such claims shall be barred, notwithstanding any statutory period of limitations to the contrary.

SELECTION OF GOODS

The selection of particular models, styles, colors, fabrics and specifications of goods and the suitability thereof for the customer's specific application are the sole responsibility of the customer.

DELAYS AND CHANGE ORDERS

After the date an order from the customer is acknowledged by Symbiote, the customer may not change the order, in whole or in part, without Symbiote's written approval. All changes must be requested in writing. Where a proposed change would necessitate substantial delays in shipment and the goods have not yet become work in process, Symbiote may condition its approval upon a price change to reflect Symbiote's prevailing

WARRANTY AND CONTRACT TERMS, continued

prices at the time of such delayed shipment. Orders for custom goods, including without limitation goods with nonstandard finishes, are not subject to change.

Symbiote is not responsible for delays in shipment due to customer requested changes to an order.

STORAGE

If the customer requests a delay in shipment after the goods have become work in process, Symbiote may place the finished goods in storage at the customer's risk and expense, and transfer to storage shall be considered delivery for all purposes, including invoicing and payment. Upon request of the purchaser, Symbiote will store an order at the factory for up to 30 days after the acknowledged ship date at no charge. Beginning on the 31st day, storage fees will be assessed on a per diem basis.

CANCELLATION

After the date an order from the customer is acknowledged by Symbiote, the customer may not cancel the order without Symbiote's written approval. All cancellations must be requested in writing. Symbiote's approval of cancellation shall be conditioned on the customer's payment of a cancellation charge of fifteen percent (15%) of the total purchase price and reimbursement of costs incurred by Symbiote prior to such approval, including engineering, testing, material costs, labor and burden and similar expenses in connection with the order cancelled. Orders for custom goods, including without limitation goods with nonstandard finishes, are not subject to cancellation.

RETURNS

The customer may not return goods without Symbiote's written approval. Returns must be requested within 90 days of the original shipment. Symbiote's approval of returns shall be conditioned on the goods being returned to Symbiote (i) in compliance with Symbiote's shipping instructions, (ii) within 90 days of the issuance of Symbiote's RGA (Returned Goods Authorization) number (iii) with all return shipping charges being prepaid by customer, (iv) in a suitable condition for resale, and (v) with the customer's payment of a restocking charge of fifteen percent (15%) of the total purchase price. Symbiote will charge the customer for repairs to returned goods at customary rates. Custom goods, including without limitation, goods with nonstandard finishes, are not subject to return.

WARRANTY MATTERS

Symbiote's standard published warranties in effect at the time of shipment applies to all goods manufactured by Symbiote.

Components purchased and resold without further processing by Symbiote are not covered by Symbiote's warranty, but Symbiote will pass on to the customer whatever warranty Symbiote receives from the manufacturer of such goods. THESE WARRANTIES ARE EXCLUSIVE AND ARE IN LIEU OF ALL OTHER WARRANTIES, EXPRESS, IMPLIED, OR STATUTORY, INCLUDING ANY WARRANTY OF MERCHANTABILITY OR FITNESS FOR ANY PARTICULAR PURPOSE.

DAMAGE LIMITATION

The liability of Symbiote arising out of the sale or use of the goods, whether based on negligence, breach of contract, strict liability or otherwise, shall not in any event exceed the original purchase price of the goods. Under no circumstances shall Symbiote be liable for any lost profits or any incidental or consequential damages of any kind with respect to its goods or the transactions by which its goods are sold.

EXCUSE

In no event shall Symbiote be liable for any loss or damage resulting from any delay or failure in shipment or other failure to perform with respect to the goods where such delay, failure, loss or damage is the proximate result of any act of any governmental authority, revolution, riot, civil disorder or disturbance, act of enemies, delay or default in transportation, strike, dispute among or between labor unions or other labor disputes, inability to obtain materials or facilities from normal sources, fire, flood, act of God or any cause not within the reasonable control of Symbiote, whether of the class of causes enumerated or otherwise. Without limiting the generality of the foregoing, Symbiote may, without causing a breach or incurring liability, allocate goods which are in short supply irrespective of the reasons therefore among customers in any manner which Symbiote in its sole discretion considers advisable.

MODIFICATION

The terms and conditions of this quotation can be modified only by a written instrument signed by Symbiote.

INFRINGEMENT

If the goods sold hereunder are to be manufactured according to the customer's specifications, the customer shall indemnify Symbiote against any claims or liability for patent or trademark infringement on account of such manufacture.