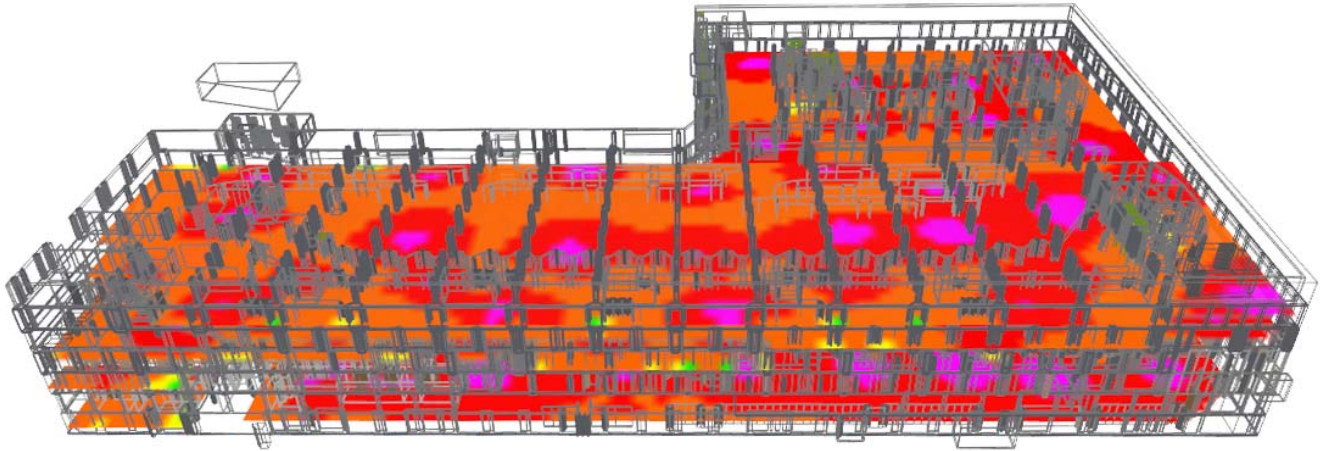
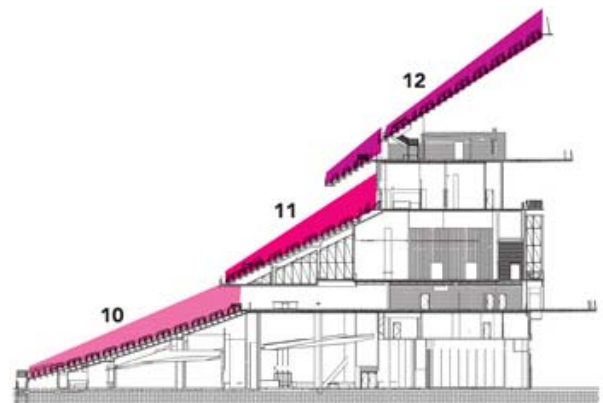


SOLiD System Engineering & Design



SOLiD has built a design program to meet the demands and needs of the fast paced wireless industry. Equipped with the latest tools, software, and technology, SOLiD will provide resources needed for any venue, to ensure accuracy in design and deployment in a rapid fashion.

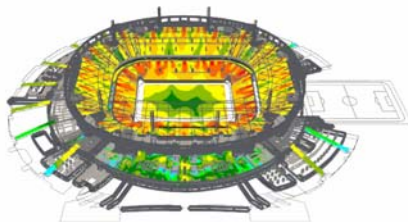
Every quality design begins with a detailed site survey and data collection. With today's demands being focused on densification, the old standard of providing a coverage based design is no longer applicable. Carrier data must be collected to guarantee dominance on the DAS over the macro networks.



SOLID SYSTEM ENGINEERING 
DESIGN

[CLICK HERE TO SUBMIT DESIGN REQUIREMENTS](#)

(https://docs.google.com/forms/d/1qZYBnPjcvBpz2JrDoxQT6oKN3FKZJe5_4T5MPK5sEbU/viewform)



Once the site survey and data collection is complete, SOLiD's RF Engineers perform a detailed analysis and determine the design requirements. Using a combination of 1W, 2W, 5W, and 20W products with a selection from 2 different platforms (ALLIANCE & EXPRESS), SOLiD can choose the best product per project based on frequency bands and public safety/private radio requirements. The SOLiD product line supports all bands from 150MHz all the way through 3GHz.

SOLiD uses advanced software tools like iBwave and AutoCAD. Utilizing the latest features from iBwave and with the expectation of designing a "future-proof" system, SOLiD creates 3D models and performs propagation analysis such as SINR, soft handoff, RSRP and throughput to verify accuracy. This process ensures the implementation of the system design will perform to the expectations of all wireless users today and into the future.

Submit your design requirements today. We'll get back to you after our team reviews your project.

You can also contact SOLiD System Engineering and Design by email ([mailto: design@solid.com](mailto:design@solid.com)).

[Monitoring & Maintenance \(services/maintenance-and-monitoring.html\)](#)

[Engineering & Design](#)

[Technical Training \(services/training/\)](#)

[Certification Programs \(services/solid-certified.html\)](#)

SOLiD DESIGN AND TECHNICAL RESOURCES AVAILABLE FOR DOWNLOAD:

[CAD Drawings > \(https://solid.egnyte.com/fl/eQh1xENew1\)](https://solid.egnyte.com/fl/eQh1xENew1)

[Technical Templates > \(https://solid.egnyte.com/fl/idV7lrGhtR\)](https://solid.egnyte.com/fl/idV7lrGhtR)

[vex Files > \(https://solid.egnyte.com/fl/sINGPKE8ZY\)](https://solid.egnyte.com/fl/sINGPKE8ZY)

[Visio Stencils > \(https://solid.egnyte.com/fl/ib6kDIF58P\)](https://solid.egnyte.com/fl/ib6kDIF58P)

©2016

SOLiD, INC.

All Rights Reserved

Bold Ideas (bold-ideas/)

[Evolution & Revolution \(bold-ideas/evolution-and-revolution.html\)](#)

[The Middleprise \(bold-ideas/the-middleprise.html\)](#)

[The Public Safety](#)

Industries (industry-applications/)

[Overview \(industry-applications/overview.html\)](#)

[Stadiums & Arenas](#)

[\(industry-applications/stadiums.html\)](#)

Products (das-solutions/)

[Products Overview \(das-solutions/overview.html\)](#)

[ALLIANCE Multi-Carrier](#)

[DAS \(das-solutions/alliance.html\)](#)

[EXPRESS Single Carrier](#)

About SOLiD Americas (about-us/)

[Overview \(about-us/overview.html\)](#)

[ONE SOLiD \(about-us/one-solid.html\)](#)

[Team \(about-us/the-solid-team.html\)](#)