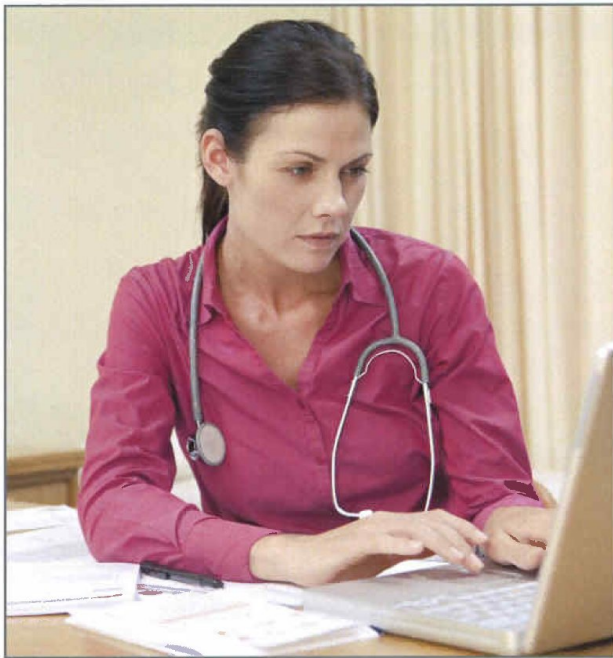




**CIMS<sup>®</sup>**  
**Custom Inventory**  
**Management Services**

## Limit Uncertainty.

Integra believes in providing customers with solutions that meet your specific needs. Our experts will work in cooperation with your staff to perform an extensive, hands-on physical inventory of all surgical instruments by set, as well as individually wrapped and back-up instruments, and in-service surgical departments and facilities.



## Flashing too much?

- Allow us to provide in-depth analysis of instrument requirements including current case load analysis, future requirements for OR expansion, surgi-center requirements, and case cart conversion.

## Inventory Management Issues?

- We will make recommendations for set streamlining, set standardization, instrument/equipment needs and the identification of obsolete instrumentation.

## Need SPD Assessment?

- Our consultants will help you identify opportunities for improvement in sterile processing, instrument care and handling, training, case cart systems, and process flow.

Integra has a team of highly skilled professionals consisting of Clinical Consultants, Regional Managers, and Surgical Instrument Specialists that are committed to the success of its clients in managing their instrument inventory. We are driven by your success in improving department efficiencies and processes between OR and SPD to guarantee the best outcomes for you, your surgeons and your patients.

**Committed to its Customers.**

The Integra CIMS® (Custom Inventory Management Services) program consists of physical inventory, consulting, education, software, and services intended to assist valued customers in managing their surgical instrument inventory. This program includes consultative services from healthcare consultants and surgical instrument experts. The healthcare consultants, with extensive experience in SPD and OR departments, work together with Integra seasoned instrument specialists to provide you with a solution-oriented partnership.

**Cross-Reference and Requisition Program.**

The most comprehensive cross-reference database is now available in an intuitive requisitioning software program. You have the ability to enter competitive instrument codes to find the Integra Surgical equivalent and view the image along with the description and price. This information can be used to build a tray and/or list of instruments and generate a quote with your pricing. This functionality can also be performed on the Integra website.

**Instrument Expansion/Conversion Project Support.**

The Integra team will be available to facilities needing assistance with instrument expansion/conversion projects such as physical inventories, set utilization, needs assessments, and process flow studies. The Integra team will provide the additional support required to develop standardized trays, process orders, receive/unpack shipments and prepare new trays.

**Instrument Consignment.**

In an effort to help facilities reduce purchase orders and inventory handling costs and eliminate shipping delays, Integra offers a consignment program for "high volume" instrument patterns. A copy of the consignment agreement is available from your Integra Sales Representative.

**Instrument Care & Handling Education.**

Integra offers educational services to meet a number of hospital needs. Educational programs include care and handling for both general and endoscopic instrumentation. Educational handbooks offer a quick reference to improve instrument processing and handling. CIMS consultants, Integra instrument experts, experienced sales representatives and authorized specialty dealers will conduct educational seminars to teach OR/SPD staff the proper procedures for cleaning, handling, servicing and sterilizing surgical instruments.

**Limit U**

Integra  
coopera  
set, as v

**Solutions to Meet Your Specific Needs.**

Integra will provide consulting services to hospitals needing assistance with issues relating to surgical instruments and processing or inventory management. Integra consultants have vast experience in the SPD and OR departments to help with case cart planning, instrument/equipment needs assessment, staff training, process flow recommendations and more.

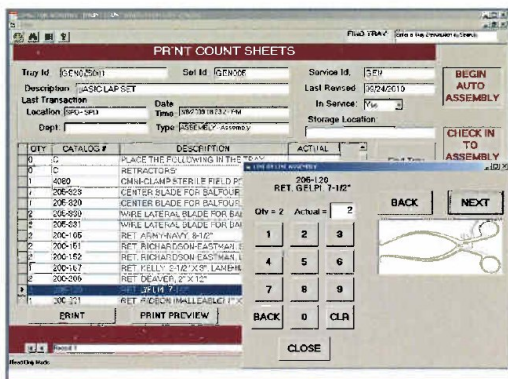


- A pre-inventory analysis is conducted to identify specific needs.
- The Integra CIMS® consultants and instrument specialists perform an extensive, on-site physical inventory.
- During the inventory process, the Integra CIMS® team examines the general conditions of the instruments to assure the proper working conditions and make appropriate recommendations.
- All inventory data is collected, analyzed and provided to the hospital in both hard copy and digital format.

Instrument inventory control problems are usually the result of inaccurate data, poor processes, and antiquated equipment. A truly effective surgical instrument inventory is paramount in planning, executing and controlling a supply chain network, which is critical to the operating room's success. The opportunities available by improving a hospital's instrument inventory management can significantly improve bottom line performance. The objectives of inventory efficiencies are more easily accomplished with accurate inventory management processes that are working effectively.

**The Integra CIMS® consultants and surgical specialists are ready to put you on the right track.**

Integra understands that managing your surgical instrument inventory requires a comprehensive instrument management software solution. Our Windows-based application is a proven software with a database optimized for fast retrieval of key information. The application allows you to easily and quickly update and manage your instrument inventory.



**Manage Count Sheet information with ease.**

- Create new count sheets
- Modify existing count sheets
- Insert comments or instructions
- Record changes

GEN005001 - BASIC LAP SET INTEGRA SURGICAL MEDICAL CENTER									
Pg 1 of 2									
ID: GEN005001	TRAY: BASIC LAP SET			Last Revised by:			SUN		
TRAY CATALOG #	Vendor No	Instrument Description	Prod	Qty	SPD	Print Cnt	Adj	Final Count	Print Count
117-114	JAHRT	TRAY: DISSEMBLING, 10-1/2" X 20" X 3-1/2"		1	1				
PLACE THE FOLLOWING IN THE TRAY:									
RETRACTORS:									
490		OMNI-CLAMP STERILE FIELD POST		1	1				
205-323	JAHRT	CENTER BLADE FOR BALFOUR, 3-1/4" X 2-3/8"		1	1				
205-320	JAHRT	CENTER BLADE FOR BALFOUR, 2-5/8" X 1-5/8"		1	1				
205-330	JAHRT	WIRE LATERAL BLADE FOR BALFOUR, 2-1/2" DEEP		2	2				
205-331	JAHRT	WIRE LATERAL BLADE FOR BALFOUR, 3-1/2" DEEP		2	2				
200-105	JAHRT	RET. ARMY-NAVY, 8-1/2"		2	2				
200-151	JAHRT	RET. RICHARDSON-EASTMAN, SMALL DBL-ENDED		2	2				
200-152	JAHRT	RET. RICHARDSON-EASTMAN, LARGE DBL-ENDED		2	2				
200-167	JAHRT	RET. KELLY, 2-1/2" X 3", LAMIN-HANDLE		1	1				
200-206	JAHRT	RET. DEAVER, 2" X 12"		2	2				
200-120	JAHRT	RET. GELPI, 7-1/2"		2	2				
200-221	JAHRT	RET. RIBBON (MALLEABLE), 1" X 13"		1	1				
200-223	JAHRT	RET. RIBBON (MALLEABLE), 1-1/2" X 13"		1	1				
200-225	JAHRT	RET. RIBBON (MALLEABLE), 2" X 13"		1	1				
SU3380		RET. GLASS ABDOMINAL		1	1				
TISSUE FORCEPS:									
130-234	JAHRT	TISSUE FCP, ADDON W/ X 2 TEETH, 4-3/4"		2	2				
130-160	JAHRT	TISSUE FCP, 6-1/2 1X2T		2	2				
130-300	JAHRT	TISSUE FCP, RUSSMAN, 8"		1	1				
130-395	JAHRT	TISSUE FCP, RUSSMAN, 10"		1	1				
130-393	JAHRT	TISSUE FCP, MONNEY, 8-3/4" W/ X 2 TEETH		1	1				
130-170	JAHRT	TISSUE FCP, 6", 1 X 2 TEETH		1	1				
320-111	JAHRT	TISSUE FCP, DEBAKEY, 2-3/4" INSULATED		2	2				
320-112	JAHRT	TISSUE FCP, DEBAKEY, 8-1/2"		2	2				
MISCELLANEOUS:									
110-185	JAHRT	KNIFE HANDLE, #3		1	1				
110-173	JAHRT	KNIFE HANDLE, #3 LONG		1	1				
170-182	JAHRT	SUCTION, POOLE, 20 PPL STRAIGHT (5-PIECES)		1	1				
LC-410		LONG UGACUP APPLIER LRG YELLOW		1	1				
		LONG UGACUP APPLIER MED GREEN		1	1				

Count Sheet Provided by INTEGRA'S Custom Inventory Management Services

**Minimum hardware requirements.**

- 1 GHZ Processor or better
- 256 MB RAM or better
- 160 MB Hard Drive Space or more
- Windows 2000, Windows NT, Windows XP
- Windows 2000, Windows XP
- Internet Explorer version 5.5 or higher
- Network card for connecting multiple workstations

The Integra CIMS® program provides the highest quality, most up-to-date inventory management services available. Our software program makes direct access to complex instrument information as simple as the click of a button. The latest barcoding technology allows the real-time tracking of surgical sets and instruments. Our consultants will work with you to facilitate this process and to enhance efficiencies realized with using data wisely. Integra wants to be your long-term source for instrument management.



- Customer's instrument inventory preloaded
- Electronic maintenance of count sheet data
- Cross-referencing of instruments by various manufacturers
- Over 3,800 instrument pictures pre-loaded
- Continued support for the display and print of pictures and videos at both the instrument level and at the set level
- Touch screen technology for easy assembly of tray count sheet with instrument picture display
- Automation of sterilization documents
- Maintenance module for scheduled preventative maintenance and repair documentation
- On-screen messaging
- Instrument, tray, peel pack and loaner tracking capabilities
- Standard and custom reports available

### **Consulting Services Included: Physical Inventory**

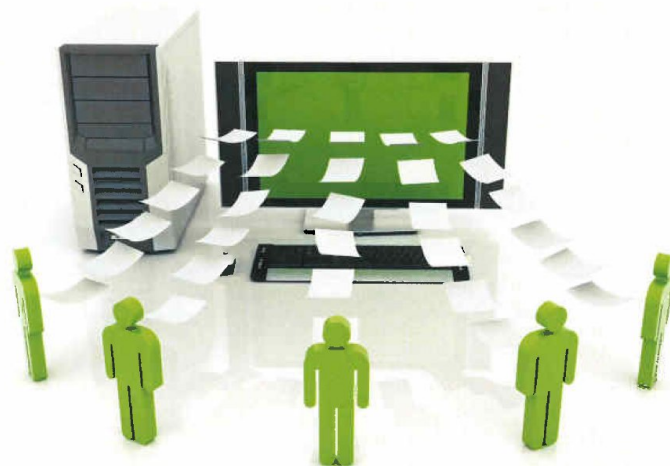
We will perform a physical inventory of your surgical instruments, trays and equipment, etc., as deemed necessary to assure accurate data at time of installation.

### **Database Build**

Following the inventory, the data is reviewed by our consultants and entered into your new instrument database. An inventory book is also provided with the complete inventory data.

### **Implementation Services**

We will provide software training to customer personnel over the course of several pre-determined visits to cover all aspects of software use and management.

**Decon**

- Expedite trays
- Care and Handling messaging
- Documenting QA

**Assembly**

- Real-time count sheet maintenance
- Printing of count sheets and barcode labels
- Cross referencing, pictures and video
- Credit for Productivity

**Sterilization**

- Electronic load record keeping
- Biological result documentation
- Sterilization messaging

**Case Cart/Locations**

- Documenting scanned location
- Record employee, date, time and location

**Operating Room**

- Ease in finding trays
- Documenting use

**A Step Ahead in Inventory Management.**

Tracking instruments from Decontam to Surgery and all other locations and back again just got easier, more efficient and more cost effective. Integra offers valued customers its CIMS® (Custom Inventory Management Services) program as a comprehensive, integrated instrument management solution which provides hospitals with industry-leading consulting services combined with state-of-the-art computer software for managing surgical instrument assets and providing training and education to all users.

With over 400 Integra CIMS® programs implemented throughout the country, the Integra Surgical team brings decades of instrument management experience to the OR and SPD. Our software program makes direct access to complex instrument information as simple as the click of a button, while the latest barcoding technology offers immediate and real-time tracking of surgical sets and instruments. Integra is your total solution for instrument management.

**Integra™**

Custom Inventory Management Services

For more information or to place an order, please contact:  
Integra • 311 Enterprise Drive, Plainsboro, NJ 08536  
USA and Canada: 877.468.5572 • 914.592.9050 (Outside USA)  
800.275.7192 (Fax) • 914.592.8056 (Outside USA Fax)  
[integralife.com](http://integralife.com)

**INTEGRA**   
LIMIT UNCERTAINTY

Integra and the Integra logo are trademarks of Integra LifeSciences Corporation or its subsidiaries.  
CIMS is a registered trademark of Integra LifeSciences Corporation or its subsidiaries.  
©2011 Integra LifeSciences Corporation. All rights reserved. Printed in the USA. 1k JPMAP-0128 01/11